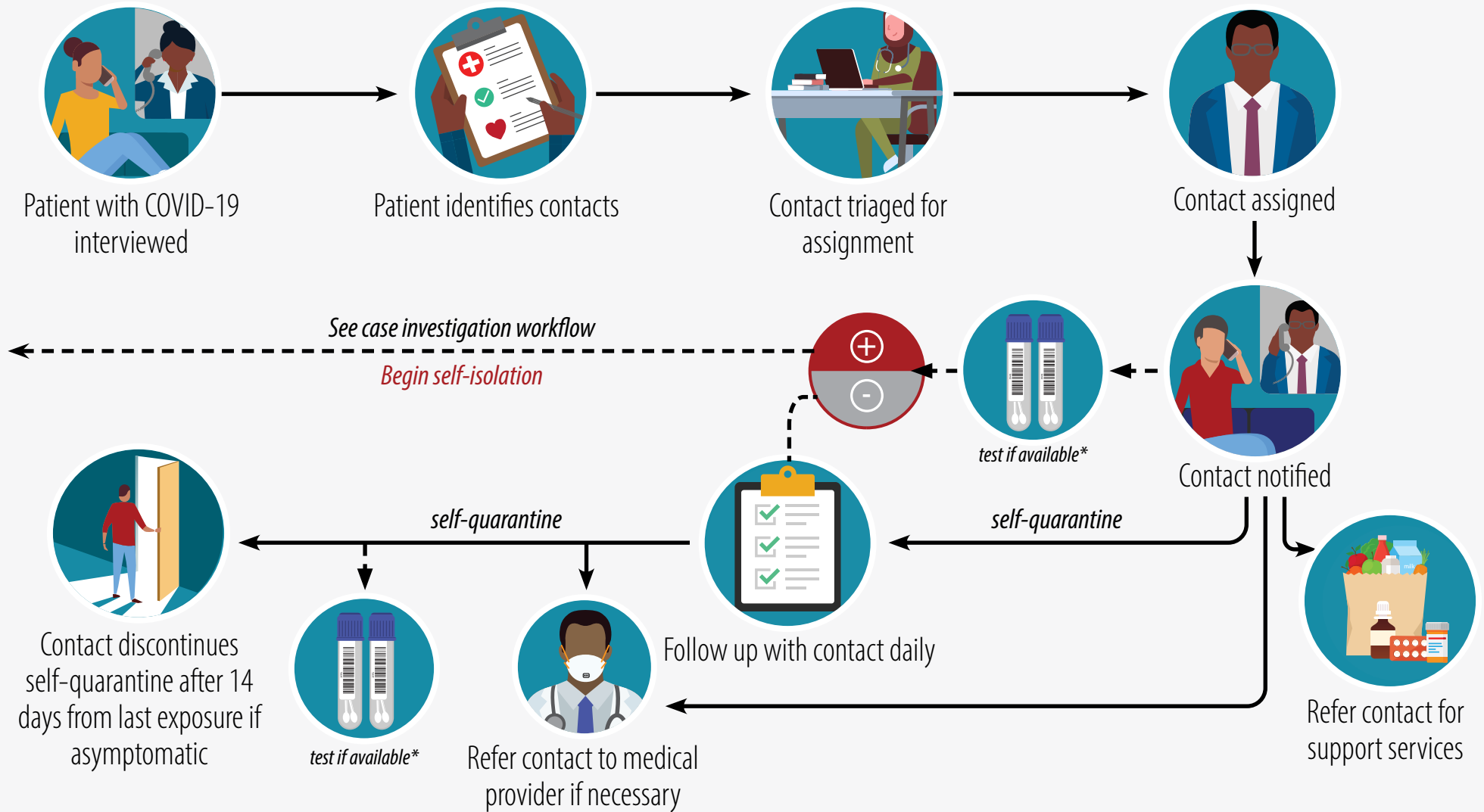


CONTACT TRACING WORKFLOW (COVID-19)

Accessible version <https://www.cdc.gov/coronavirus/2019-ncov/php/contact-tracing/contact-tracing-plan/contact-tracing.html>



*if contact tests positive or develops COVID-19 symptoms, case investigation is necessary.



[cdc.gov/COVID19](https://www.cdc.gov/COVID19)