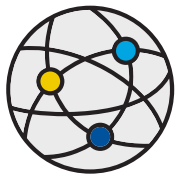
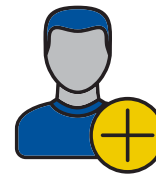


# Medicare Beneficiaries AT A GLANCE

## WHO'S COVERED BY MEDICARE - 2019:

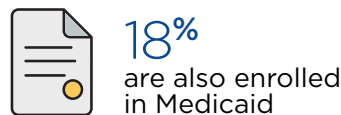
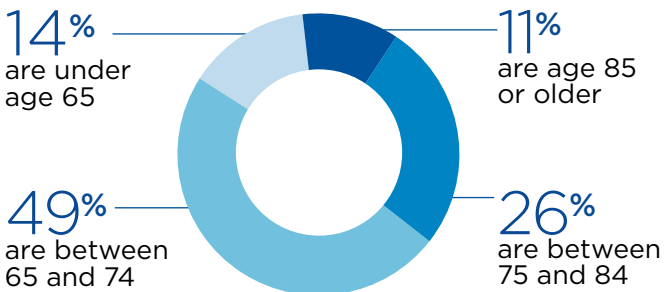


**61.5M**  
Americans are enrolled in Medicare

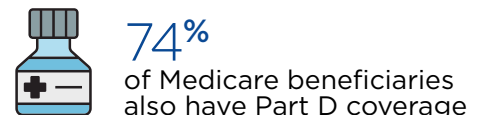
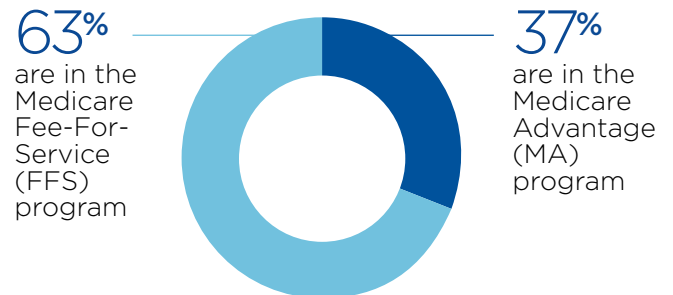


**3.8M**  
are new enrollees

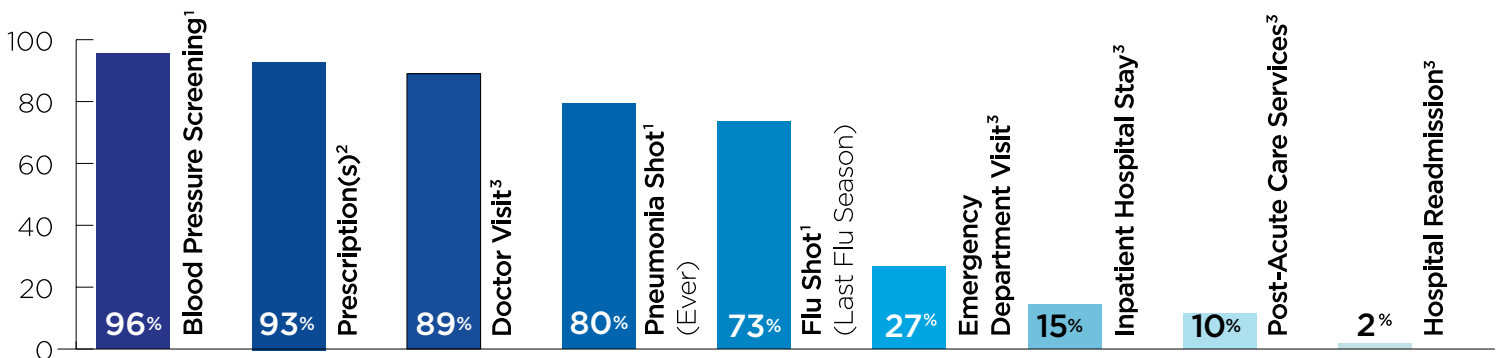
### WHO THEY ARE



### TYPE OF MEDICARE COVERAGE



### USE OF MEDICARE SERVICES



## AVERAGE TOTAL PAYMENTS (MEDICARE PAYMENTS + BENEFICIARY COST SHARE)<sup>4</sup>



**\$14,234**

Inpatient Hospital Stay  
(253 stays per 1,000 enrollees)



**\$98**

Doctor Visit  
(13.5 visits per enrollee)



**\$1,069**

Outpatient Emergency Department Visit  
(250 visits per 1,000 enrollees)



**\$72**

30-Day Prescription  
(52 fills per enrollee)

## OVERALL SATISFACTION RATES AND ACCESS TO CARE

**96%**

General Care<sup>6</sup>

**83%**

Out-of-Pocket Costs<sup>6</sup>

**95%**

Ease of Access to Doctor<sup>6</sup>

**42%**

Wait Time of Less than One Week for a Doctor's Appointment<sup>7</sup>

## USUAL SOURCE OF CARE<sup>8</sup>

**69%**

Doctor's Office

**17%**

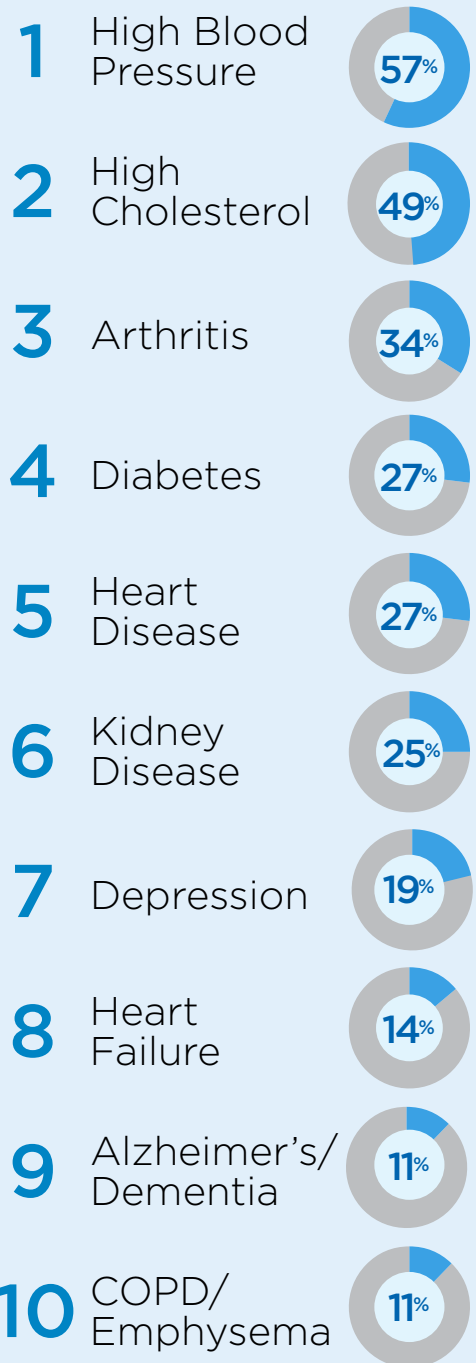
Medical Clinic

**14%**

Other Source\*

(\*Includes Other Clinic/Healthcare Center, Hospital-Outpatient, ED, Managed Care Center)

## TOP 10 CHRONIC CONDITIONS<sup>5</sup>



1 Based on the Medicare Current Beneficiary Survey data. The percentage reported for flu shot refers to the 2019-20 flu season.

2 Based on Part D Enrollment and Utilization

3 Based on Fee-For-Service Enrollment and Utilization

4 Based on Medicare Payments and Beneficiary Cost Share for Fee-For-Service Beneficiaries with Utilization

5 Based on Fee-For-Service beneficiaries

6 Excludes beneficiaries who reported "No Experience"

7 Among beneficiaries who reported an appointment (that was not a standing appointment) with a doctor within the past year

8 Among beneficiaries who reported having a usual source of care