

HIGHLIGHTS OF PRESCRIBING INFORMATION

These highlights do not include all the information needed to use RYBREVANT safely and effectively. See full prescribing information for RYBREVANT.

RYBREVANT® (amivantamab-vmjw) injection, for intravenous use
Initial U.S. Approval: 2021

RECENT MAJOR CHANGES

Indications and Usage (1)	03/2024
Dosage and Administration (2)	03/2024
Warnings and Precautions (5)	03/2024

INDICATIONS AND USAGE

RYBREVANT is a bispecific EGF receptor-directed and MET receptor-directed antibody indicated:

- in combination with carboplatin and pemetrexed for the first-line treatment of adult patients with locally advanced or metastatic non-small cell lung cancer (NSCLC) with epidermal growth factor receptor (EGFR) exon 20 insertion mutations, as detected by an FDA-approved test. (1, 2.2)
- as a single agent for the treatment of adult patients with locally advanced or metastatic NSCLC with EGFR exon 20 insertion mutations, as detected by an FDA-approved test, whose disease has progressed on or after platinum-based chemotherapy. (1, 2.2)

DOSAGE AND ADMINISTRATION

- The recommended dosage of RYBREVANT is based on baseline body weight and administered as an intravenous infusion after dilution. (2.3, 2.5, 2.6, 2.7)
- Administer premedications as recommended. (2.4)
- Administer via a peripheral line on Week 1 and Week 2. (2.7)
- Administer RYBREVANT in combination with chemotherapy weekly for 4 weeks, with the initial dose as a split infusion in Week 1 on Day 1 and Day 2, then administer every 3 weeks starting at Week 7. (2.3)
- Administer RYBREVANT as a single agent weekly for 4 weeks, with the initial dose as a split infusion in Week 1 on Day 1 and Day 2, then administer every 2 weeks starting at Week 5. (2.4)
- Administer diluted RYBREVANT intravenously according to the infusion rates in Tables 7 and 8. (2.8)

Body Weight (at Baseline)	Dosage	Recommended Dose
RYBREVANT in Combination with Carboplatin and Pemetrexed		
Less than 80 kg	Weeks 1-4	1400 mg
	Week 7 onwards	1750 mg
Greater than or equal to 80 kgs	Weeks 1-4	1750 mg
	Week 7 onwards	2100 mg
RYBREVANT as a Single Agent		
Less than 80 kg	Weeks 1-5	1050 mg
	Week 7 onwards	
Greater than or equal to 80 kg	Weeks 1-5	1400 mg
	Week 7 onwards	

DOSAGE FORMS AND STRENGTHS

Injection: 350 mg/7 mL (50 mg/mL) solution in a single-dose vial (3)

CONTRAINDICATIONS

None. (4)

WARNINGS AND PRECAUTIONS

- **Infusion-Related Reactions (IRR)**: Interrupt infusion at the first sign of IRRs. Reduce infusion rate or permanently discontinue RYBREVANT based on severity. (2.5, 5.1)
- **Interstitial Lung Disease (ILD)/Pneumonitis**: Monitor for new or worsening symptoms indicative of ILD. Immediately withhold RYBREVANT in patients with suspected ILD/pneumonitis and permanently discontinue if ILD/pneumonitis is confirmed. (2.5, 5.2)
- **Dermatologic Adverse Reactions**: May cause rash including acneiform dermatitis and toxic epidermal necrolysis. Withhold, dose reduce or permanently discontinue RYBREVANT based on severity. (2.5, 5.3)
- **Ocular Toxicity**: Promptly refer patients with worsening eye symptoms to an ophthalmologist. Withhold, dose reduce or permanently discontinue RYBREVANT based on severity. (2.5, 5.4)
- **Embryo-Fetal Toxicity**: Can cause fetal harm. Advise females of reproductive potential of the potential risk to the fetus and to use effective contraception. (5.5, 8.1, 8.3)

ADVERSE REACTIONS

RYBREVANT in Combination with Carboplatin and Pemetrexed

- The most common adverse reactions (≥ 20%) were rash, nail toxicity, stomatitis, infusion-related reaction, fatigue, edema, constipation, decreased appetite, nausea, COVID-19, diarrhea, and vomiting. (6.1)
- The most common Grade 3 or 4 laboratory abnormalities (≥ 2%) were decreased albumin, increased alanine aminotransferase, increased gamma-glutamyl transferase, decreased sodium, decreased potassium, decreased magnesium, and decreases in white blood cells, hemoglobin, neutrophils, platelets, and lymphocytes. (6.1)

RYBREVANT as a Single Agent

- The most common adverse reactions (≥ 20%) were rash, IRR, paronychia, musculoskeletal pain, dyspnea, nausea, fatigue, edema, stomatitis, cough, constipation, and vomiting. (6.1)
- The most common Grade 3 or 4 laboratory abnormalities (≥ 2%) were decreased lymphocytes, decreased albumin, decreased phosphate, decreased potassium, increased alkaline phosphatase, increased glucose, increased gamma-glutamyl transferase, and decreased sodium. (6.1)

To report SUSPECTED ADVERSE REACTIONS, contact Janssen Biotech, Inc. at 1-800-JANSSEN (1-800-526-7736) or FDA at 1-800-FDA-1088 or www.fda.gov/medwatch.

USE IN SPECIFIC POPULATIONS

Lactation: Advise not to breastfeed. (8.2)

See 17 for PATIENT COUNSELING INFORMATION and FDA-approved patient labeling.

Revised: 03/2024

FULL PRESCRIBING INFORMATION: CONTENTS*

1 INDICATIONS AND USAGE

- 1.1 First-Line Treatment of NSCLC with EGFR Exon 20 Insertion Mutations
- 1.2 Previously Treated NSCLC with EGFR Exon 20 Insertion Mutations

2 DOSAGE AND ADMINISTRATION

- 2.1 Important Dosage Information
- 2.2 Patient Selection
- 2.3 Recommended Dosage of RYBREVANT for First-line Treatment of NSCLC with Exon 20 Insertion Mutations (RYBREVANT in Combination with Carboplatin and Pemetrexed)
- 2.4 Recommended Dosage of RYBREVANT for Patients with Previously Treated NSCLC with Exon 20 Insertion Mutations (RYBREVANT as a Single Agent)
- 2.5 Recommended Premedications
- 2.6 Dosage Modifications for Adverse Reactions

2.7 Preparation

2.8 Administration

3 DOSAGE FORMS AND STRENGTHS

4 CONTRAINDICATIONS

5 WARNINGS AND PRECAUTIONS

- 5.1 Infusion-Related Reactions
- 5.2 Interstitial Lung Disease/Pneumonitis
- 5.3 Dermatologic Adverse Reactions
- 5.4 Ocular Toxicity
- 5.5 Embryo-Fetal Toxicity

6 ADVERSE REACTIONS

6.1 Clinical Trials Experience

8 USE IN SPECIFIC POPULATIONS

- 8.1 Pregnancy
- 8.2 Lactation
- 8.3 Females and Males of Reproductive Potential
- 8.4 Pediatric Use
- 8.5 Geriatric Use

11 DESCRIPTION

12 CLINICAL PHARMACOLOGY

12.1 Mechanism of Action

12.2 Pharmacodynamics

12.3 Pharmacokinetics

12.6 Immunogenicity

13 NONCLINICAL TOXICOLOGY

13.1 Carcinogenesis, Mutagenesis, Impairment of Fertility

14 CLINICAL STUDIES

14.1 First Line Treatment of NSCLC with Exon 20 Insertion Mutations-PAPILLON

14.2 Previously Treated NSCLC with Exon 20 Insertion Mutations-CHRYSALIS

16 HOW SUPPLIED/STORAGE AND HANDLING

17 PATIENT COUNSELING INFORMATION

*Sections or subsections omitted from the full prescribing information are not listed.

FULL PRESCRIBING INFORMATION

1 INDICATIONS AND USAGE

1.1 First-Line Treatment of NSCLC with *EGFR* Exon 20 Insertion Mutations

RYBREVANT is indicated in combination with carboplatin and pemetrexed for the first-line treatment of adult patients with locally advanced or metastatic non-small cell lung cancer (NSCLC) with epidermal growth factor receptor (*EGFR*) exon 20 insertion mutations, as detected by an FDA-approved test [*see Dosage and Administration (2.2)*].

1.2 Previously Treated NSCLC with *EGFR* Exon 20 Insertion Mutations

RYBREVANT is indicated as a single agent for the treatment of adult patients with locally advanced or metastatic NSCLC with *EGFR* exon 20 insertion mutations, as detected by an FDA-approved test [*see Dosage and Administration (2.2)*], whose disease has progressed on or after platinum-based chemotherapy.

2 DOSAGE AND ADMINISTRATION

2.1 Important Dosage Information

- Administer premedications before each RYBREVANT infusion as recommended [*see Dosage and Administration (2.5)*].
- Administer diluted RYBREVANT intravenously according to the infusion rates in Tables 7 and 8, with the initial dose as a split infusion on Week 1 on Day 1 and Day 2 [*see Dosage and Administration (2.8)*].
- Administer RYBREVANT via peripheral line for Week 1 Day 1 and 2 and Week 2 to reduce the risk of infusion-related reactions [*see Dosage and Administration 2.8*].
- When administering RYBREVANT in combination with carboplatin and pemetrexed, infuse pemetrexed first, carboplatin second, and RYBREVANT last [*see Dosage and Administration 2.8*].

2.2 Patient Selection

Select patients for treatment with RYBREVANT based on the presence of *EGFR* exon 20 insertion mutations in tumor or plasma specimens [*see Clinical Studies (14)*]. If no mutation is detected in a plasma specimen, test tumor tissue. Information on FDA-approved tests is available at: <http://www.fda.gov/CompanionDiagnostics>.

2.3 Recommended Dosage of RYBREVANT for First-line Treatment of NSCLC with Exon 20 Insertion Mutations (RYBREVANT in Combination with Carboplatin and Pemetrexed)

The recommended dosages of RYBREVANT, administered in combination with carboplatin and pemetrexed, based on baseline body weight are provided in Table 1.

Table 1: Recommended Dosage for RYBREVANT in Combination with Carboplatin and Pemetrexed

Body weight at Baseline ^a	Recommended Dose	Dosing Schedule
Less than 80 kg	1400 mg	Weekly (total of 4 doses) from Weeks 1 to 4 <ul style="list-style-type: none"> • Week 1 - split infusion on Day 1 and Day 2 • Weeks 2 to 4 - infusion on Day 1 • Weeks 5 and 6 – no dose
	1750 mg	Every 3 weeks starting at Week 7 onwards
Greater than or equal to 80 kg	1750 mg	Weekly (total of 4 doses) for Weeks 1 to 4 <ul style="list-style-type: none"> • Week 1 - split infusion on Day 1 and Day 2 • Weeks 2 to 4 - infusion on Day 1 • Weeks 5 and 6 – no dose
	2100 mg	Every 3 weeks starting at Week 7 onwards

^a Dose adjustments not required for subsequent body weight changes.

The recommended order of administration and regimen for RYBREVANT in combination with carboplatin and pemetrexed is provided in Table 2.

Table 2: Order of Administration and Regimen for RYBREVANT in Combination with Pemetrexed and Carboplatin

RYBREVANT in Combination with Carboplatin and Pemetrexed		
<u>Administer the regimen in the following order:</u> pemetrexed first, carboplatin second and RYBREVANT last.		
Drug	Dose	Duration/Timing of Treatment
Pemetrexed	Pemetrexed 500 mg/m ² intravenously Refer to the pemetrexed Full Prescribing Information for complete information.	Every 3 weeks, continue until disease progression or unacceptable toxicity.
Carboplatin	Carboplatin AUC 5 intravenously Refer to the carboplatin Full Prescribing Information for complete information.	Every 3 weeks for up to 12 weeks.
RYBREVANT	RYBREVANT intravenously See Table 1.	Every 3 weeks, continue until disease progression or unacceptable toxicity.

2.4 Recommended Dosage of RYBREVANT for Patients with Previously Treated NSCLC with Exon 20 Insertion Mutations (RYBREVANT as a Single Agent)

The recommended dosages of RYBREVANT as a single agent, based on baseline body weight, are provided in Table 3.

Table 3: Recommended Dosage Schedule for RYBREVANT as a Single Agent

Body weight at Baseline ^a	Recommended Dose	Dosing Schedule
Less than 80 kg	1050 mg	Weekly (total of 5 doses) from Weeks 1 to 5 <ul style="list-style-type: none"> • Week 1 - split infusion on Day 1 and Day 2 • Weeks 2 to 5 - infusion on Day 1 • Week 6 – no dose
		Every 2 weeks starting at Week 7 onwards
Greater than or equal to 80 kg	1400 mg	Weekly (total of 5 doses) from Weeks 1 to 5 <ul style="list-style-type: none"> • Week 1 - split infusion on Day 1 and Day 2 • Weeks 2 to 5 - infusion on Day 1 • Week 6 – no dose
		Every 2 weeks starting at Week 7 onwards

^a Dose adjustments not required for subsequent body weight changes.

Administer RYBREVANT until disease progression or unacceptable toxicity.

2.5 Recommended Premedications

Prior to the initial infusion of RYBREVANT (Week 1, Day 1 and 2), administer premedication as described in Table 4 to reduce the risk of infusion-related reactions [see *Warnings and Precautions (5.1)*].

Glucocorticoid administration is required for Week 1, Day 1 and 2 dose only and upon re-initiation after prolonged dose interruptions, then as necessary for subsequent infusions (see *Table 4*). Administer both antihistamine and antipyretic prior to all infusions.

Table 4: Premedications

Medication	Dose	Route of Administration	Dosing Window Prior to RYBREVANT Administration
Antihistamine*	Diphenhydramine (25 to 50 mg) or equivalent	Intravenous	15 to 30 minutes
		Oral	30 to 60 minutes
Antipyretic*	Acetaminophen (650 to 1,000 mg)	Intravenous	15 to 30 minutes
		Oral	30 to 60 minutes
Glucocorticoid [‡]	Dexamethasone (20 mg) or equivalent	Intravenous	45 to 60 minutes
Glucocorticoid ⁺	Dexamethasone (10 mg) or equivalent	Intravenous	45 to 60 minutes

* Required at all doses.

[‡] Required at initial dose (Week 1 Day 1)

⁺ Required at second dose (Week 1 Day 2); optional for subsequent doses.

2.6 Dosage Modifications for Adverse Reactions

The recommended dose reductions for adverse reactions for RYBREVANT are listed in Table 5.

Table 5: Dose Reductions for Adverse Reactions for RYBREVANT

Dose*	1 st Dose Reduction	2 nd Dose Reduction	3 rd Dose Reduction
1050 mg	700 mg	350 mg	Discontinue RYBREVANT
1400 mg	1050 mg	700 mg	
1750 mg	1400 mg	1050 mg	
2100 mg	1750 mg	1400 mg	

* Dose at which the adverse reaction occurred

The recommended dosage modifications and management for adverse reactions for RYBREVANT are provided in Table 6.

Table 6: Recommended Dosage Modifications and Management for Adverse Reactions for RYBREVANT

Adverse Reaction	Severity	Dosage Modifications
Infusion-related reactions (IRR) [see Warnings and Precautions (5.1)]	Grade 1 to 2	<ul style="list-style-type: none"> Interrupt RYBREVANT infusion if IRR is suspected and monitor patient until reaction symptoms resolve. Resume the infusion at 50% of the infusion rate at which the reaction occurred. If there are no additional symptoms after 30 minutes, the infusion rate may be escalated (see Tables 7 and 8). Include corticosteroid with premedications for subsequent dose (see Table 4).
	Grade 3	<ul style="list-style-type: none"> Interrupt RYBREVANT infusion and administer supportive care medications. Continuously monitor patient until reaction symptoms resolve. Resume the infusion at 50% of the infusion rate at which the reaction occurred. If there are no additional symptoms after 30 minutes, the infusion rate may be escalated (see Tables 7 and 8). Include corticosteroid with premedications for subsequent dose (see Table 4). For recurrent Grade 3, permanently discontinue RYBREVANT.
	Grade 4	<ul style="list-style-type: none"> Permanently discontinue RYBREVANT.
Interstitial Lung Disease (ILD)/pneumonitis [see Warnings and Precautions (5.2)]	Any Grade	<ul style="list-style-type: none"> Withhold RYBREVANT if ILD/pneumonitis is suspected. Permanently discontinue RYBREVANT if ILD/pneumonitis is confirmed.
Dermatologic Adverse Reactions (including dermatitis acneiform, pruritus, dry skin) [see Warnings and Precautions (5.3)]	Grade 1	<ul style="list-style-type: none"> Initiate supportive care management. Reassess after 2 weeks.
	Grade 2	<ul style="list-style-type: none"> Initiate supportive care management. Reassess after 2 weeks; if rash does not improve, consider dose reduction.
	Grade 3	<ul style="list-style-type: none"> Withhold RYBREVANT and initiate supportive care management.

		<ul style="list-style-type: none"> • Upon recovery to \leq Grade 2, resume RYBREVANT at reduced dose. • If no improvement within 2 weeks, permanently discontinue treatment.
	Grade 4	<ul style="list-style-type: none"> • Permanently discontinue RYBREVANT.
	Severe bullous, blistering or exfoliating skin conditions (including toxic epidermal necrolysis (TEN))	<ul style="list-style-type: none"> • Permanently discontinue RYBREVANT.
Other Adverse Reactions [<i>see Adverse Reactions (6.1)</i>]	Grade 3	<ul style="list-style-type: none"> • Withhold RYBREVANT until recovery to \leq Grade 1 or baseline. • Resume at the same dose if recovery occurs within 1 week. • Resume at reduced dose if recovery occurs after 1 week but within 4 weeks. • Permanently discontinue if recovery does not occur within 4 weeks.
	Grade 4	<ul style="list-style-type: none"> • Withhold RYBREVANT until recovery to \leq Grade 1 or baseline. • Resume at reduced dose if recovery occurs within 4 weeks. • Permanently discontinue if recovery does not occur within 4 weeks. • Permanently discontinue for recurrent Grade 4 reactions.

Recommended Dosage Modifications for Adverse Reactions for RYBREVANT in Combination with Carboplatin and Pemetrexed

When administering RYBREVANT in combination with carboplatin and pemetrexed, modify the dosage of one or more drugs. Withhold or discontinue RYBREVANT as shown in Table 6. Refer to prescribing information for carboplatin and pemetrexed for additional dosage modification information.

2.7 Preparation

Dilute and prepare RYBREVANT for intravenous infusion before administration.

- Check that the RYBREVANT solution is colorless to pale yellow. Parenteral drug products should be inspected visually for particulate matter and discoloration prior to administration, whenever solution and container permit. Do not use if discoloration or visible particles are present.
- Determine the dose required of RYBREVANT needed based on patient's baseline weight [*see Dosage and Administration (2.3)*]. Each vial of RYBREVANT contains 350 mg of amivantamab-vmjw.

- Withdraw and then discard a volume of either 5% dextrose solution or 0.9% sodium chloride solution from the 250 mL infusion bag equal to the volume of RYBREVANT to be added (i.e., discard 7 mL diluent from the infusion bag for each RYBREVANT vial). Only use infusion bags made of polyvinylchloride (PVC), polypropylene (PP), polyethylene (PE), or polyolefin blend (PP+PE).
- Withdraw 7 mL of RYBREVANT from each vial and add it to the infusion bag. The final volume in the infusion bag should be 250 mL. Discard any unused portion left in the vial.
- Gently invert the bag to mix the solution. Do not shake.
- Diluted solutions should be administered within 10 hours (including infusion time) at room temperature 59°F to 77°F (15°C to 25°C).

2.8 Administration

- Administer the diluted RYBREVANT solution [*see Dosage and Administration (2.7)*] by intravenous infusion using an infusion set fitted with a flow regulator and with an in-line, sterile, non-pyrogenic, low protein-binding polyethersulfone (PES) filter (pore size 0.2 micrometer).
- Administration sets must be made of either polyurethane (PU), polybutadiene (PBD), PVC, PP, or PE.
- The administration set with filter, **must** be primed with either 5% dextrose solution or 0.9% sodium chloride solution prior to the initiation of each RYBREVANT infusion.
- Do not infuse RYBREVANT concomitantly in the same intravenous line with other agents.

RYBREVANT in Combination with Carboplatin and Pemetrexed

- Administer RYBREVANT in combination with carboplatin and pemetrexed infusions every 3 weeks intravenously according to the infusion rates in Table 7.
- Administer RYBREVANT via a peripheral line on Week 1 and Week 2 given the high incidence of infusion-related reactions during initial treatment [*see Warnings and Precautions (5.1)*].
- RYBREVANT may be administered via central line for subsequent weeks.
- For the initial infusion, prepare RYBREVANT as close to administration time as possible to allow for the possibility of extended infusion time in the event of an infusion related reaction.
- Administer the pemetrexed infusion first, carboplatin infusion second, and the RYBREVANT infusion last.

Table 7: Infusion Rates of RYBREVANT for First-line Treatment of NSCLC with Exon 20 Insertion Mutations (RYBREVANT in Combination with Carboplatin and Pemetrexed)

Body Weight Less Than 80 kg			
Week	Dose (per 250 mL bag)	Initial Infusion Rate (mL/hr)	Subsequent Infusion Rate[†] (mL/hr)
Week 1 (split dose infusion)			
Week 1 <i>Day 1</i>	350 mg	50	75
Week 1 <i>Day 2</i>	1050 mg	33	50
Week 2	1400 mg	65	
Week 3	1400 mg	85	
Week 4	1400 mg	125	
Weeks 5 and 6	No dose		
Week 7 and every 3 weeks thereafter	1750 mg	125	
Body Weight Greater Than or Equal to 80 kg			
Week	Dose (per 250 mL bag)	Initial Infusion Rate (mL/hr)	Subsequent Infusion Rate (mL/hr)
Week 1 (split dose infusion)			
Week 1 <i>Day 1</i>	350 mg	50	75
Week 1 <i>Day 2</i>	1400 mg	25	50
Week 2	1750 mg	65	
Week 3	1750 mg	85	
Week 4	1750 mg	125	
Week 5 and 6	No dose		
Week 7 and every 3 weeks thereafter	2100 mg	125	

[†] In the absence of infusion-related reactions, increase the initial infusion rate to the subsequent infusion rate after 2 hours based on patient tolerance. Total infusion time approximately 4-6 hours for day 1 and 6-8 hours for day 2. Subsequent infusion time is approximately 2 hours.

RYBREVANT as a Single Agent

- Administer RYBREVANT as a single agent infusion every 2 weeks intravenously according to the infusion rates in Table 8.
- Administer RYBREVANT via a peripheral line on Week 1 and Week 2, given the high incidence of infusion-related reactions during initial treatment [see *Warnings and Precautions (5.1)*].
- RYBREVANT may be administered via central line for subsequent weeks.
- For the initial infusion, prepare RYBREVANT as close to administration time as possible to allow for the possibility of extended infusion time in the event of an infusion related reaction.

Table 8: Infusion Rates of RYBREVANT for Patients with Previously Treated NSCLC with Exon 20 Insertion Mutations (RYBREVANT as Single Agent)

Body Weight Less Than 80 kg			
Week	Dose (per 250 mL bag)	Initial Infusion Rate (mL/hr)	Subsequent Infusion Rate [†] (mL/hr)
Week 1 (split dose infusion)			
Week 1 Day 1	350 mg	50	75
Week 1 Day 2	700 mg	50	75
Week 2	1050 mg	85	
Week 3	1050 mg	125	
Week 4	1050 mg	125	
Week 5	1050 mg	125	
Week 6	No dose		
Week 7 and every 2 weeks thereafter	1050 mg	125	
Body Weight Greater Than or Equal to 80 kg			
Week	Dose (per 250 mL bag)	Initial Infusion Rate (mL/hr)	Subsequent Infusion Rate [†] (mL/hr)
Week 1 (split dose infusion)			
Week 1 Day 1	350 mg	50	75
Week 1 Day 2	1050 mg	35	50
Week 2	1400 mg	65	
Week 3	1400 mg	85	
Week 4	1400 mg	125	
Week 5	1400 mg	125	
Week 6	No dose		
Week 7 and every 2 weeks thereafter	1400 mg	125	

[†] In the absence of infusion-related reactions, increase the initial infusion rate to the subsequent infusion rate after 2 hours based on patient tolerance. Total infusion time approximately 4-6 hours for day 1 and 6-8 hours for day 2. Subsequent infusion time is approximately 2 hours.

3 DOSAGE FORMS AND STRENGTHS

Injection: 350 mg/7 mL (50 mg/mL) colorless to pale yellow solution in a single-dose vial.

4 CONTRAINDICATIONS

None.

5 WARNINGS AND PRECAUTIONS

5.1 Infusion-Related Reactions

RYBREVANT can cause infusion-related reactions (IRR); signs and symptoms of IRR include dyspnea, flushing, fever, chills, nausea, chest discomfort, hypotension and vomiting.

RYBREVANT with Carboplatin and Pemetrexed

RYBREVANT in combination with carboplatin and pemetrexed can cause infusion-related reactions. Based on the safety population [see *Adverse Reactions (6.1)*], infusion-related reactions occurred in 42% of patients treated with RYBREVANT in combination with carboplatin and pemetrexed, including Grade 3 (1.3%) adverse reactions. The incidence of infusion modifications due to IRR was 40%, and 0.7% of patients permanently discontinued RYBREVANT.

RYBREVANT as a Single Agent

Based on the safety population [see *Adverse Reactions (6.1)*], IRR occurred in 66% of patients treated with RYBREVANT as a single agent. Among patients receiving treatment on Week 1 Day 1, 65% experienced an IRR, while the incidence of IRR was 3.4% with the Day 2 infusion, 0.4% with the Week 2 infusion, and cumulatively 1.1% with subsequent infusions. Of the reported IRRs, 97% were Grade 1-2, 2.2% were Grade 3, and 0.4% were Grade 4. The median time to onset was 1 hour (range 0.1 to 18 hours) after start of infusion. The incidence of infusion modifications due to IRR was 62%, and 1.3% of patients permanently discontinued RYBREVANT due to IRR.

Premedicate with antihistamines, antipyretics, and glucocorticoids and infuse RYBREVANT as recommended [see *Dosage and Administration (2.4)*]. Administer RYBREVANT via a peripheral line on Week 1 and Week 2 [see *Dosage and Administration (2.7)*].

Monitor patients for any signs and symptoms of infusion reactions during RYBREVANT infusion in a setting where cardiopulmonary resuscitation medication and equipment are available. Interrupt infusion if IRR is suspected. Reduce the infusion rate or permanently discontinue RYBREVANT based on severity [see *Dosage and Administration (2.5)*].

5.2 Interstitial Lung Disease/Pneumonitis

RYBREVANT can cause interstitial lung disease (ILD)/pneumonitis.

RYBREVANT with Carboplatin and Pemetrexed

Based on the safety population [see *Adverse Reactions (6.1)*], Grade 3 ILD/pneumonitis occurred in 2.6% of patients treated with RYBREVANT in combination with carboplatin and pemetrexed, all patients required permanent discontinuation.

RYBREVANT as a Single Agent

Based on the safety population [see *Adverse Reactions (6.1)*], ILD/pneumonitis occurred in 3.3% of patients treated with RYBREVANT as a single agent, with 0.7 % of patients experiencing Grade 3 ILD/pneumonitis. Three patients (1%) discontinued RYBREVANT due to ILD/pneumonitis.

Monitor patients for new or worsening symptoms indicative of ILD/pneumonitis (e.g., dyspnea, cough, fever). Immediately withhold RYBREVANT in patients with suspected ILD/pneumonitis and permanently discontinue if ILD/pneumonitis is confirmed [see *Dosage and Administration (2.5)*].

5.3 Dermatologic Adverse Reactions

RYBREVANT can cause rash (including dermatitis acneiform), pruritus and dry skin.

RYBREVANT with Carboplatin and Pemetrexed

RYBREVANT in combination with carboplatin and pemetrexed can cause dermatologic adverse reactions. Based on the safety population [see *Adverse Reactions (6.1)*], rash occurred in 89% of patients treated with RYBREVANT in combination with carboplatin and pemetrexed, including Grade 3 (19%) adverse reactions. Rash leading to dose reductions occurred in 19% of patients, and 2% permanently discontinued RYBREVANT and 1.3% discontinued pemetrexed.

RYBREVANT as a Single Agent

Based on the safety population [see *Adverse Reactions (6.1)*], rash occurred in 74% of patients treated with RYBREVANT as a single agent, including Grade 3 rash in 3.3% of patients. The median time to onset of rash was 14 days (range: 1 to 276 days). Rash leading to dose reduction occurred in 5% of patients, and RYBREVANT was permanently discontinued due to rash in 0.7% of patients [see *Adverse Reactions (6.1)*].

Toxic epidermal necrolysis (TEN) occurred in one patient (0.3%) treated with RYBREVANT as a single agent.

Instruct patients to limit sun exposure during and for 2 months after treatment with RYBREVANT. Advise patients to wear protective clothing and use broad-spectrum UVA/UVB sunscreen. Alcohol-free emollient cream is recommended for dry skin.

If skin reactions develop, start topical corticosteroids and topical and/or oral antibiotics. For Grade 3 reactions, add oral steroids and consider dermatologic consultation. Promptly refer patients presenting with severe rash, atypical appearance or distribution, or lack of improvement within 2 weeks to a dermatologist. Withhold, dose reduce or permanently discontinue RYBREVANT based on severity [see *Dosage and Administration (2.6)*].

5.4 Ocular Toxicity

RYBREVANT can cause ocular toxicity including keratitis, dry eye symptoms, conjunctival redness, blurred vision, visual impairment, ocular itching, and uveitis.

RYBREVANT with Carboplatin and Pemetrexed

Based on the safety population [see *Adverse Reactions (6.1)*] RYBREVANT in combination with carboplatin and pemetrexed can cause ocular toxicity including blepharitis, dry eye, conjunctival redness, blurred vision, and eye pruritus. All events were Grade 1-2.

RYBREVANT as a Single Agent

Based on the safety population [see *Adverse Reactions (6.1)*], keratitis occurred in 0.7% and uveitis occurred in 0.3% of patients treated with RYBREVANT. All events were Grade 1-2. Promptly refer patients presenting with eye symptoms to an ophthalmologist. Withhold, dose reduce or permanently discontinue RYBREVANT based on severity [see *Dosage and Administration (2.6)*].

5.5 Embryo-Fetal Toxicity

Based on its mechanism of action and findings from animal models, RYBREVANT can cause fetal harm when administered to a pregnant woman. Administration of other EGFR inhibitor molecules to pregnant animals has resulted in an increased incidence of impairment of embryo-fetal development, embryo lethality, and abortion. Advise females of reproductive potential of the potential risk to the fetus. Advise female patients of reproductive potential to use effective contraception during treatment and for 3 months after the last dose of RYBREVANT. [see *Use in Specific Populations (8.1, 8.3)*].

6 ADVERSE REACTIONS

The following adverse reactions are discussed elsewhere in the labeling:

- Infusion-Related Reactions [see *Warnings and Precautions (5.1)*]
- Interstitial Lung Disease/Pneumonitis [see *Warnings and Precautions (5.2)*]
- Dermatologic Adverse Reactions [see *Warnings and Precautions (5.3)*]
- Ocular Toxicity [see *Warnings and Precautions (5.4)*]

6.1 Clinical Trials Experience

Because clinical trials are conducted under widely varying conditions, adverse reaction rates observed in the clinical trials of a drug cannot be directly compared to rates in the clinical trials of another drug and may not reflect the rates observed in practice.

The data described in the WARNINGS AND PRECAUTIONS reflect exposure to RYBREVANT in combination with carboplatin and pemetrexed in the PAPILLON study in 151 patients with

locally advanced or metastatic NSCLC. Patients received RYBREVANT intravenously at 1400 mg (for patients < 80 kg) or 1750 mg (for patients ≥ 80 kg) once weekly through 4 weeks, then every 3 weeks with a dose of 1750 mg (for patients < 80 kg) or 2100 mg (for patients ≥ 80 kg) starting at Week 7 until disease progression or unacceptable toxicity, in combination with carboplatin at area under the curve AUC 5 once every 3 weeks, for up to 12 weeks, and pemetrexed at 500 mg/m² once every 3 weeks until disease progression or unacceptable toxicity. Among 151 patients who received RYBREVANT in combination with carboplatin and pemetrexed, 76% were exposed for 6 months or longer and 38% were exposed for greater than one year. In the safety population, the most common (≥ 20%) adverse reactions were rash, nail toxicity, stomatitis, infusion-related reaction, fatigue, edema, constipation, decreased appetite, nausea, COVID-19, diarrhea, and vomiting. The most common Grade 3 to 4 laboratory abnormalities (≥ 2%) were increased alanine aminotransferase decreased albumin, decreased potassium and decreased magnesium.

The data in the WARNINGS AND PRECAUTIONS also reflect exposure to RYBREVANT as a single agent in the CHRYSALIS study in 302 patients with locally advanced or metastatic NSCLC. Patients received RYBREVANT at 1050 mg (for patient baseline body weight < 80 kg) or 1400 mg (for patient baseline body weight ≥ 80 kg) once weekly for 4 weeks, then every 2 weeks thereafter until disease progression or unacceptable toxicity. Among 302 patients who received RYBREVANT as a single agent, 36% were exposed for 6 months or longer and 12% were exposed for greater than one year. In the safety population, the most common (≥ 20%) adverse reactions were rash, infusion-related reaction, paronychia, musculoskeletal pain, dyspnea, nausea, edema, cough, fatigue, stomatitis, constipation, vomiting and pruritus. The most common Grade 3 to 4 laboratory abnormalities (≥ 2%) were increased gamma glutamyl transference, decreased sodium, decreased potassium and increased alkaline phosphatase.

First-line Treatment of Non-Small Cell Lung Cancer (NSCLC) with Exon 20 Insertion Mutations

The data described below reflect exposure to RYBREVANT in combination with carboplatin and pemetrexed at the recommended dosage in the PAPILLON trial [see *Clinical Studies (14.1)*] in 151 patients with locally advanced or metastatic NSCLC with EGFR exon 20 insertion mutations. Among patients who received RYBREVANT in combination with carboplatin and pemetrexed the median exposure was 9.7 months (range: 0.0 to 26.9 months). In patients that received carboplatin and pemetrexed alone, the median exposure was 6.7 months (range 0.0 to 25.3).

The median age was 61 years (range: 27 to 86 years); 56% were female; 64% were Asian, 32% were White, 1.3% were Black or African American, race was not reported in 1.3% of patients; 89% were not Hispanic or Latino; 86% had baseline body weight < 80 kg.

Serious adverse reactions occurred in 37% of patients who received RYBREVANT in combination with carboplatin and pemetrexed. Serious adverse reactions in ≥ 2% of patients included rash, pneumonia, interstitial lung disease (ILD), pulmonary embolism, vomiting and COVID-19. Fatal adverse reactions occurred in 7 patients (4.6%) due to pneumonia, cerebrovascular accident, cardio-respiratory arrest, COVID-19, sepsis and death not otherwise specified.

Permanent discontinuation of RYBREVANT due to an adverse reaction occurred in 11% of patients. Adverse reactions resulting in permanent discontinuation of RYBREVANT in $\geq 1\%$ of patients were rash and ILD.

Dose interruptions of RYBREVANT due to an adverse reaction occurred in 64% of patients. Infusion-related reactions (IRR) requiring infusion interruptions occurred in 38% of patients. Adverse reactions requiring dose interruption in $\geq 5\%$ of patients included rash and nail toxicity.

Dose reductions of RYBREVANT due to an adverse reaction occurred in 36% of patients. Adverse reactions requiring dose reductions in $\geq 5\%$ of patients included rash, and nail toxicity.

The most common adverse reactions ($\geq 20\%$) were rash, nail toxicity, stomatitis, infusion-related reaction, fatigue, edema, constipation, decreased appetite, nausea, COVID-19, diarrhea, and vomiting. The most common Grade 3 to 4 laboratory abnormalities ($\geq 2\%$) were decreased albumin, increased alanine aminotransferase, increased gamma-glutamyl transferase, decreased sodium, decreased potassium, decreased magnesium, and decreases in white blood cells, hemoglobin, neutrophils, platelets, and lymphocytes.

Table 9 summarizes the adverse reactions in PAPILLON.

Table 9: Adverse Reactions ($\geq 10\%$) in Patients with Metastatic NSCLC with Exon 20 Insertion Mutations Who Received RYBREVANT in Combination with Carboplatin and Pemetrexed in PAPILLON

Adverse Reaction ¹	RYBREVANT in Combination with Carboplatin and Pemetrexed (n=151)		Carboplatin and Pemetrexed (n=155)	
	All Grades (%)	Grade 3 or 4 (%)	All Grades (%)	Grade 3 or 4 (%)
Skin and subcutaneous tissue disorders				
Rash ²	90	19	19	0
Nail toxicity ²	62	7	3	0
Dry skin ²	17	0	6	0
Gastrointestinal disorders				
Stomatitis ²	43	4	11	0
Constipation	40	0	30	0.7
Nausea	36	0.7	42	0
Vomiting	21	3.3	19	0.7
Diarrhea	21	3	13	1.3
Hemorrhoids	12	1	1.3	0
Abdominal pain ²	11	0.7	8	0
General disorders and administration site conditions				
Infusion related reaction	42	1.3	1.3	0
Fatigue ²	42	6	45	3.9
Edema ²	40	1.3	19	0
Pyrexia ²	17	0	6	0
Metabolism and nutrition disorders				
Decreased appetite	36	2.6	28	1.3
Infections and Infestations				
COVID-19	24	2	14	0.6
Pneumonia ²	13	5	6	1.9
Vascular Disorders				
Hemorrhage ²	18	0.7	11	1.9
Respiratory, thoracic and mediastinal disorders				

Cough ²	17	0	16	0
Dyspnea ²	11	1.3	16	3.2
Investigations				
Weight decreased	14	0.7	8	0
Nervous System Disorders				
Dizziness ²	11	0	12	0
Psychiatric Disorders				
Insomnia	11	0	13	0

¹ Adverse reactions were graded using CTCAE version 5.0

² Grouped Term

Clinically relevant adverse reactions in <10% of patients who received RYBREVANT in combination with carboplatin and pemetrexed included pulmonary embolism, deep vein thrombosis, skin ulcer, conjunctivitis and interstitial lung disease (ILD)/pneumonitis.

Table 10 summarizes the laboratory abnormalities in PAPILLON.

Table 10: Select Laboratory Abnormalities (≥ 20%) That Worsened from Baseline in Patients With Metastatic NSCLC with EGFR Exon 20 Insertion Mutations Who Received RYBREVANT in Combination with Carboplatin and Pemetrexed in PAPILLON

Laboratory Abnormality ¹	RYBREVANT in Combination with Carboplatin and Pemetrexed ²		Carboplatin in Combination with Pemetrexed ³	
	All Grades (%)	Grade 3 or 4 (%)	All Grades (%)	Grade 3 or 4 (%)
Hematology				
Decreased white blood cells	89	17	76	10
Decreased hemoglobin	79	11	85	13
Decreased neutrophils	76	36	61	23
Decreased platelets	70	10	54	12
Decreased lymphocytes	61	11	49	13
Decreased white blood cells	89	17	76	10
Chemistry				
Decreased albumin	87	7	34	1
Increased aspartate aminotransferase	60	1	61	1
Increased alanine aminotransferase	57	4	54	1
Decreased sodium	55	7	39	4
Increased alkaline phosphatase	51	1	28	0
Decreased potassium	44	11	17	1
Decreased magnesium	39	2	30	1
Increased gamma-glutamyl transferase	38	4	43	4
Decreased calcium (corrected)	27	1	18	1

¹ Adverse reactions were graded using CTCAE version 5.0

² The denominator used to calculate the rate varied from 113 to 150 based on the number of patients with a baseline value and at least one post-treatment value.

³ The denominator used to calculate the rate varied from 119 to 154 based on the number of patients with a baseline value and at least one post-treatment value.

Previously Treated NSCLC Exon 20 Insertion Mutations

The data described below reflect exposure to RYBREVANT at the recommended dosage in 129 patients with locally advanced or metastatic NSCLC with EGFR exon 20 insertion mutations

in the CHRYSALIS trial [see *Clinical Studies (14.2)*], whose disease had progressed on or after platinum-based chemotherapy. Among patients who received RYBREVANT, 44% were exposed for 6 months or longer and 12% were exposed for greater than one year.

The median age was 62 years (range: 36 to 84 years); 61% were female; 55% were Asian, 35% were White, and 2.3% were Black; and 82% had baseline body weight <80 kg.

Serious adverse reactions occurred in 30% of patients who received RYBREVANT. Serious adverse reactions in $\geq 2\%$ of patients included pulmonary embolism, pneumonitis/ILD, dyspnea, musculoskeletal pain, pneumonia, and muscular weakness. Fatal adverse reactions occurred in 2 patients (1.5%) due to pneumonia and 1 patient (0.8%) due to sudden death.

Permanent discontinuation of RYBREVANT due to an adverse reaction occurred in 11% of patients. Adverse reactions resulting in permanent discontinuation of RYBREVANT in $\geq 1\%$ of patients were pneumonia, IRR, pneumonitis/ILD, dyspnea, pleural effusion, and rash.

Dose interruptions of RYBREVANT due to an adverse reaction occurred in 78% of patients. Infusion-related reactions (IRR) requiring infusion interruptions occurred in 59% of patients. Adverse reactions requiring dose interruption in $\geq 5\%$ of patients included dyspnea, nausea, rash, vomiting, fatigue, and diarrhea.

Dose reductions of RYBREVANT due to an adverse reaction occurred in 15% of patients. Adverse reactions requiring dose reductions in $\geq 2\%$ of patients included rash and paronychia.

The most common adverse reactions ($\geq 20\%$) were rash, IRR, paronychia, musculoskeletal pain, dyspnea, nausea, fatigue, edema, stomatitis, cough, constipation, and vomiting. The most common Grade 3 to 4 laboratory abnormalities ($\geq 2\%$) were decreased lymphocytes, decreased albumin, decreased phosphate, decreased potassium, increased glucose, increased alkaline phosphatase, increased gamma-glutamyl transferase, and decreased sodium.

Table 11 summarizes the adverse reactions in CHRYSALIS.

Table 11: Adverse Reactions ($\geq 10\%$) in Patients with NSCLC with Exon 20 Insertion Mutations Whose Disease Has Progressed on or after Platinum-based Chemotherapy and Received RYBREVANT in CHRYSALIS

Adverse Reactions	RYBREVANT ¹ (N=129)	
	All Grades (%)	Grades 3 or 4 (%)
Skin and subcutaneous tissue disorders		
Rash*	84	3.9
Pruritus	18	0
Dry skin	14	0
General disorders and administration site conditions		
Infusion related reaction	64	3.1
Fatigue*	33	2.3
Edema*	27	0.8
Pyrexia	13	0
Infections and infestations		
Paronychia	50	3.1
Pneumonia*	10	0.8

Musculoskeletal and connective tissue disorders		
Musculoskeletal pain*	47	0
Respiratory, thoracic and mediastinal disorders		
Dyspnea*	37	2.3
Cough*	25	0
Gastrointestinal disorders		
Nausea	36	0
Stomatitis*	26	0.8
Constipation	23	0
Vomiting	22	0
Diarrhea	16	3.1
Abdominal Pain*	11	0.8
Vascular disorders		
Hemorrhage*	19	0
Metabolism and nutrition disorders		
Decreased appetite	15	0
Nervous system disorders		
Peripheral neuropathy*	13	0
Dizziness	12	0.8
Headache*	10	0.8

* Grouped term

¹ Adverse reactions were graded using CTCAE version 4.03

Clinically relevant adverse reactions in <10% of patients who received RYBREVANT included ocular toxicity, ILD/pneumonitis, and toxic epidermal necrolysis (TEN).

Table 12 summarizes the laboratory abnormalities in CHRYSALIS.

Table 12: Select Laboratory Abnormalities (≥ 20%) That Worsened from Baseline in Patients With Metastatic NSCLC with EGFR Exon 20 Insertion Mutations Whose Disease Has Progressed on or After Platinum-based Chemotherapy and Who Received RYBREVANT in CHRYSALIS

Laboratory Abnormality	RYBREVANT ⁺ (N=129)	
	All Grades (%)	Grades 3 or 4 (%)
Chemistry		
Decreased albumin	79	8
Increased glucose	56	4
Increased alkaline phosphatase	53	4.8
Increased creatinine	46	0
Increased alanine aminotransferase	38	1.6
Decreased phosphate	33	8
Increased aspartate aminotransferase	33	0
Decreased magnesium	27	0
Increased gamma-glutamyl transferase	27	4
Decreased sodium	27	4
Decreased potassium	26	6
Hematology		
Decreased lymphocytes	36	8

⁺ The denominator used to calculate the rate was 126 based on the number of patients with a baseline value and at least one post-treatment value.

8 USE IN SPECIFIC POPULATIONS

8.1 Pregnancy

Risk Summary

Based on the mechanism of action and findings in animal models, RYBREVANT can cause fetal harm when administered to a pregnant woman. There are no available data on the use of RYBREVANT in pregnant women or animal data to assess the risk of RYBREVANT in pregnancy. Disruption or depletion of EGFR in animal models resulted in impairment of embryo-fetal development including effects on placental, lung, cardiac, skin, and neural development. The absence of EGFR or MET signaling has resulted in embryo lethality, malformations, and post-natal death in animals (*see Data*). Advise pregnant women of the potential risk to a fetus.

In the U.S. general population, the estimated background risk of major birth defects and miscarriage in clinically recognized pregnancies is 2% to 4% and 15% to 20%, respectively.

Data

Animal Data

No animal studies have been conducted to evaluate the effects of amivantamab-vmjw on reproduction and fetal development; however, based on its mechanism of action, RYBREVANT can cause fetal harm or developmental anomalies. In mice, EGFR is critically important in reproductive and developmental processes including blastocyst implantation, placental development, and embryo-fetal/postnatal survival and development. Reduction or elimination of embryo-fetal or maternal EGFR signaling can prevent implantation, can cause embryo-fetal loss during various stages of gestation (through effects on placental development) and can cause developmental anomalies and early death in surviving fetuses. Adverse developmental outcomes were observed in multiple organs in embryos/neonates of mice with disrupted EGFR signaling. Similarly, knock out of MET or its ligand HGF was embryonic lethal due to severe defects in placental development, and fetuses displayed defects in muscle development in multiple organs. Human IgG1 is known to cross the placenta; therefore, amivantamab-vmjw has the potential to be transmitted from the mother to the developing fetus.

8.2 Lactation

Risk Summary

There are no data on the presence of amivantamab-vmjw in human milk, the effects on the breastfed child or on milk production. Because of the potential for serious adverse reactions from RYBREVANT in breast-fed children, advise women not to breast-feed during treatment with RYBREVANT and for 3 months after the last dose.

8.3 Females and Males of Reproductive Potential

RYBREVANT can cause fetal harm when administered to a pregnant woman [*see Use in Specific Populations (8.1)*].

Pregnancy Testing

Verify pregnancy status of females of reproductive potential prior to initiating RYBREVANT.

Contraception

Females

Advise females of reproductive potential to use effective contraception during treatment and for 3 months after the last dose of RYBREVANT.

8.4 Pediatric Use

The safety and efficacy of RYBREVANT have not been established in pediatric patients.

8.5 Geriatric Use

Of the 151 patients with locally advanced or metastatic NSCLC treated with RYBREVANT in combination with carboplatin and pemetrexed in the PAPILLON study, 37% were ≥ 65 years of age and 8% were ≥ 75 years of age.

Of the 302 patients with locally advanced or metastatic NSCLC treated with RYBREVANT as a single agent in the CHRYSALIS study, 39% were ≥ 65 years of age and 11% were ≥ 75 years of age.

No clinically important differences in safety or efficacy were observed between patients who were ≥ 65 years of age and younger patients.

11 DESCRIPTION

Amivantamab-vmjw is a low-fucose human immunoglobulin G1-based bispecific antibody directed against the EGF and MET receptors, produced by mammalian cell line (Chinese Hamster Ovary [CHO]) using recombinant DNA technology that has a molecular weight of approximately 148 kDa. RYBREVANT[®] (amivantamab-vmjw) injection for intravenous infusion is a sterile, preservative-free, colorless to pale yellow solution in single-dose vials. The pH is 5.7.

Each RYBREVANT vial contains 350 mg (50 mg/mL) amivantamab-vmjw, EDTA disodium salt dihydrate (0.14 mg), L-histidine (2.3 mg), L-histidine hydrochloride monohydrate (8.6 mg), L-methionine (7 mg), polysorbate 80 (4.2 mg), sucrose (595 mg), and water for injection, USP.

12 CLINICAL PHARMACOLOGY

12.1 Mechanism of Action

Amivantamab-vmjw is a bispecific antibody that binds to the extracellular domains of EGFR and MET.

In *in vitro* and *in vivo* studies amivantamab-vmjw was able to disrupt EGFR and MET signaling functions through blocking ligand binding and, in exon 20 insertion mutation models, degradation of EGFR and MET. The presence of EGFR and MET on the surface of tumor cells also allows for targeting of these cells for destruction by immune effector cells, such as natural killer cells and macrophages, through antibody-dependent cellular cytotoxicity (ADCC) and trogocytosis mechanisms, respectively.

12.2 Pharmacodynamics

The exposure-response relationship and time-course of pharmacodynamic response of amivantamab-vmjw have not been fully characterized in patients with NSCLC with EGFR exon 20 insertion mutations.

12.3 Pharmacokinetics

Based on RYBREVANT single agent data, amivantamab-vmjw exposures increased proportionally over a dosage range from 350 to 1750 mg. Based on the population pharmacokinetics of RYBREVANT, steady-state concentrations of RYBREVANT were reached by week 13 for both the 3-week and 2-week dosing regimen and the systemic accumulation was 1.9-fold.

Distribution

The amivantamab-vmjw mean (\pm SD) volume of distribution is 5.34 (\pm 1.81) L.

Elimination

The geometric mean (% CV) linear clearance (CL) and terminal half-life is 0.266 L/day (30.4%) and 13.7 days (31.9%), respectively.

Specific Populations

No clinically meaningful differences in the pharmacokinetics of amivantamab-vmjw were observed based on age (range: 27-87 years), sex, race, creatinine clearance (CL_{cr} 29 to 301 mL/min), or mild hepatic impairment [(total bilirubin \leq ULN and AST $>$ ULN) or (ULN $<$ total bilirubin \leq 1.5 times ULN)]. The pharmacokinetics of amivantamab-vmjw have not been studied in patients with severe renal impairment (CL_{cr} 15 to 29 mL/min) or patients with moderate (total bilirubin 1.5 to 3 times ULN) to severe (total bilirubin $>$ 3 times ULN) hepatic impairment.

Body Weight

Increases in body weight increased the volume of distribution and clearance of amivantamab-vmjw. Amivantamab-vmjw exposures are 30-40% lower in patients who weighed \geq 80 kg compared to patients with body weight $<$ 80 kg at the same dose. Exposures of amivantamab-vmjw were comparable between patients who weighed $<$ 80 kg and received 1050 mg dose and patients who weighed \geq 80 kg and received 1400 mg dose.

12.6 Immunogenicity

The observed incidence of anti-drug antibodies is highly dependent on the sensitivity and specificity of the assay. Differences in assay methods preclude meaningful comparisons of the incidence of anti-drug antibodies (ADA) in the studies described below with the incidence of anti-drug antibodies in other studies, including those of amivantamab-vmjw or amivantamab products.

In patients with NSCLC who received RYBREVANT as a single agent or as part of a combination therapy, 3 of the 663 (0.5%) patients who were treated with RYBREVANT and evaluable for the presence of anti-drug antibodies (ADA) tested positive for treatment-emergent anti-amivantamab-vmjw antibodies. Given the low incidence of detectable antibody-drug antibodies, the effect of ADA on the efficacy of RYBREVANT remains unknown.

13 NONCLINICAL TOXICOLOGY

13.1 Carcinogenesis, Mutagenesis, Impairment of Fertility

No studies have been performed to assess the potential of amivantamab-vmjw for carcinogenicity or genotoxicity. Fertility studies have not been performed to evaluate the potential effects of amivantamab-vmjw. In 6-week and 3-month repeat-dose toxicology studies in monkeys, there were no notable effects in the male and female reproductive organs.

14 CLINICAL STUDIES

14.1 First Line Treatment of NSCLC with Exon 20 Insertion Mutations-PAPILLON

The efficacy of RYBREVANT was evaluated in PAPILLON (NCT04538664), in a randomized, open-label, multicenter study. Eligible patients were required to have previously untreated locally advanced or metastatic NSCLC with EGFR Exon 20 insertion mutations measurable disease per RECIST v1.1, Eastern Cooperative Oncology Group (ECOG) performance status (PS) ≤ 1 , and adequate organ and bone marrow function. Patients with brain metastases at screening were eligible for participation once they were definitively treated, clinically stable, asymptomatic, and off corticosteroid treatment for at least 2 weeks prior to randomization. Patients with a medical history of interstitial lung disease or active ILD were excluded from the clinical study.

A total of 308 patients were randomized 1:1 to receive RYBREVANT in combination with carboplatin and pemetrexed (n=153) or carboplatin and pemetrexed (n=155). Patients received RYBREVANT intravenously at 1400 mg (for patients < 80 kg) or 1750 mg (for patients ≥ 80 kg) once weekly through 4 weeks, then every 3 weeks with a dose of 1750 mg (for patients < 80 kg) or 2100 mg (for patients ≥ 80 kg) starting at Week 7 until disease progression or unacceptable toxicity. Carboplatin was administered intravenously at area under the concentration-time curve 5 mg/mL per minute (AUC 5) once every 3 weeks, for up to 12 weeks. Pemetrexed was administered intravenously at 500 mg/m² on once every 3 weeks until disease progression or unacceptable toxicity. Patients were stratified by Eastern Cooperative Oncology Group (ECOG) performance status (0 or 1) and prior brain metastases (yes or no).

The primary efficacy outcome measure was progression-free survival (PFS) as assessed by blinded independent central review (BICR). Additional efficacy outcome measures included overall

response rate (ORR), duration of response (DOR) and overall survival (OS). Cross-over to single agent RYBREVANT was permitted for patients who had confirmed disease progression on carboplatin and pemetrexed.

The median age was 62 (range: 27 to 92) years, with 40% of the patients \geq 65 years of age; 58% were female; 61% were Asian and 36% were White, 0.7% were Black or African American and race was not reported in 2.3% of patients; 93% were not Hispanic or Latino. Baseline ECOG performance status was 0 (35%) or 1 (65%); 58% were never smokers; 23% had history of brain metastasis and 84% had Stage IV cancer at initial diagnosis.

PAPILLON demonstrated a statistically significant improvement in progression free survival for patients randomized to RYBREVANT in combination with carboplatin and pemetrexed compared with carboplatin and pemetrexed.

Efficacy results are summarized in Table 13 and Figure 1.

Table 13: Efficacy Results in PAPILLON

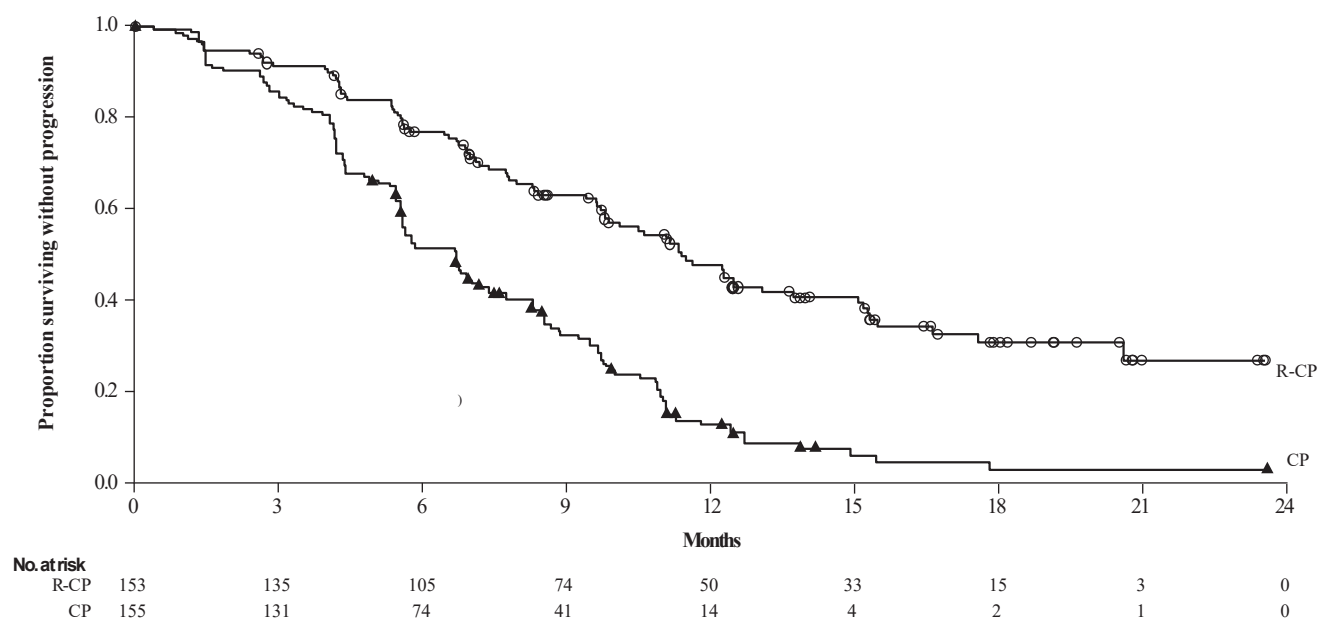
	RYBREVANT+ carboplatin+ pemetrexed (N=153)	carboplatin+ pemetrexed (N=155)
Progression-Free Survival (PFS)		
Number of events (%)	84 (55)	132 (85)
Median, months (95% CI)	11.4 (9.8, 13.7)	6.7 (5.6, 7.3)
HR (95% CI)	0.40 (0.30, 0.53)	
p-value	p<0.0001	
Overall Response Rate (ORR)¹		
ORR, % (95% CI)	67 (59, 75)	36 (29, 44)
Complete response, %	4	1
Partial response, %	63	36
Duration of response (DOR)²		
Median (95% CI), months	10.1 (8.5, 13.9)	5.6 (4.4, 6.9)

CI = confidence interval

¹ Confirmed responses.

² In confirmed responders.

Figure 1: Kaplan-Meier Curve of PFS in Previously Untreated NSCLC Patients by BICR Assessment – Papillon Study



While OS results were immature at the current analysis, with 44% of pre-specified deaths for the final analysis reported, no trend towards a detriment was observed. Seventy-five (48%) of the treated patients crossed over from the carboplatin and pemetrexed arm after confirmation of disease progression to receive RYBREVANT as a single agent.

14.2 Previously Treated NSCLC with Exon 20 Insertion Mutations-CHRYSLIS

The efficacy of RYBREVANT was evaluated in patients with locally advanced or metastatic NSCLC with EGFR exon 20 insertion mutations in a multicenter, open-label, multi-cohort clinical trial (CHRYSLIS, NCT02609776). The study included patients with locally advanced or metastatic NSCLC with EGFR exon 20 insertion mutations whose disease had progressed on or after platinum-based chemotherapy. Patients with untreated brain metastases and patients with a history of ILD requiring treatment with prolonged steroids or other immunosuppressive agents within the last 2 years were not eligible for the study.

In the efficacy population, EGFR exon 20 insertion mutation status was determined by prospective local testing using tissue (94%) and/or plasma (6%) samples. Of the 81 patients with EGFR exon 20 insertion mutations identified by local testing, plasma samples from 78/81 (96%) patients were tested retrospectively using Guardant360[®] CDx, identifying 62/78 (79%) samples with an EGFR exon 20 insertion mutation; 16/78 (21%) samples did not have an EGFR exon 20 insertion mutation identified.

Patients received RYBREVANT at 1050 mg (for patient baseline body weight < 80 kg) or 1400 mg (for patient baseline body weight ≥80 kg) once weekly for 4 weeks, then every 2 weeks

thereafter until disease progression or unacceptable toxicity. The major efficacy outcome measure was overall response rate (ORR) according to Response Evaluation Criteria in Solid Tumors (RECIST v1.1) as evaluated by Blinded Independent Central Review (BICR). An additional efficacy outcome measure was duration of response (DOR) by BICR.

The efficacy population included 81 patients with NSCLC with EGFR exon 20 insertion mutation with measurable disease who were previously treated with platinum-based chemotherapy. The median age was 62 (range: 42 to 84) years, 59% were female; 49% were Asian, 37% were White, 2.5% were Black; 74% had baseline body weight <80 kg; 95% had adenocarcinoma; and 46% had received prior immunotherapy. The median number of prior therapies was 2 (range: 1 to 7). At baseline, 67% had Eastern Cooperative Oncology Group (ECOG) performance status of 1; 53% never smoked; all patients had metastatic disease; and 22% had previously treated brain metastases.

Efficacy results are summarized in Table 14.

Table 14: Efficacy Results for CHRYSALIS

	Prior Platinum-based Chemotherapy Treated (N=81)
Overall Response Rate (95% CI)	40% (29%, 51%)
Complete response (CR)	3.7%
Partial response (PR)	36%
Duration of Response (DOR)	
Median, months (95% CI), months	11.1 (6.9, NE)
Patients with DOR ≥6 months	63%

Based on Kaplan-Meier estimates.
NE=Not Estimable, CI=confidence interval.

16 HOW SUPPLIED/STORAGE AND HANDLING

How Supplied

RYBREVANT[®] (amivantamab-vmjw) injection is a sterile, preservative-free, colorless to pale yellow solution for intravenous infusion. Each single-dose vial contains 350 mg/7 mL (50 mg/mL) RYBREVANT. Each vial is individually packed in a single carton. (NDC 57894-501-01).

Storage and Handling

Store in a refrigerator at 2°C to 8°C (36°F to 46°F) in original carton to protect from light. Do not freeze.

17 PATIENT COUNSELING INFORMATION

Advise the patient to read the FDA-approved patient labeling (Patient Information).

Infusion-Related Reactions

Advise patients that RYBREVANT can cause infusion-related reactions, the majority of which may occur with the first infusion. Advise patients to alert their healthcare provider immediately for any signs or symptoms of infusion-related reactions [see *Warnings and Precautions (5.1)*].

Interstitial Lung Disease/Pneumonitis

Advise patients of the risks of interstitial lung disease (ILD)/pneumonitis. Advise patients to immediately contact their healthcare provider for new or worsening respiratory symptoms [*see Warnings and Precautions (5.2)*].

Dermatologic Adverse Reactions

Advise patients of the risk of dermatologic adverse reactions. Advise patients to limit direct sun exposure, to use broad spectrum UVA/UVB sunscreen, and to wear protective clothing during treatment with RYBREVANT [*see Warnings and Precautions (5.3)*]. Advise patients to apply alcohol free emollient cream to dry skin.

Ocular Toxicity

Advise patients of the risk of ocular toxicity. Advise patients to contact their ophthalmologist if they develop eye symptoms and advise discontinuation of contact lenses until symptoms are evaluated [*see Warnings and Precautions (5.4)*].

Paronychia/Nail Toxicity

Advise patients of the risk of paronychia. Advise patients to contact their healthcare provider for signs or symptoms of paronychia [*see Adverse Reactions (6.1)*].

Embryo-Fetal Toxicity

Advise females of reproductive potential of the potential risk to a fetus, to use effective contraception during treatment with RYBREVANT and for 3 months after the last dose, and to inform their healthcare provider of a known or suspected pregnancy. [*see Warnings and Precautions (5.5), Use in Specific Populations (8.1, 8.3)*].

Lactation

Advise women not to breastfeed during treatment with RYBREVANT and for 3 months after the last dose [*see Use in Specific Populations (8.2)*].

Product of Ireland

Manufactured by:

Janssen Biotech, Inc.

Horsham, PA 19044, USA

U.S. License Number 1864

For patent information: www.janssenpatents.com

© 2022 Janssen Pharmaceutical Companies

PATIENT INFORMATION
RYBREVANT® (RYE–breh–vant)
(amivantamab-vmjw)
injection, for intravenous use

What is RYBREVANT?

RYBREVANT is a prescription medicine used to treat adults:

- in combination with carboplatin and pemetrexed as a first-line treatment for non-small cell lung cancer (NSCLC) that:
 - has spread to other parts of the body (metastatic) or cannot be removed by surgery, **and**
 - has a certain abnormal epidermal growth factor receptor “EGFR” gene(s)
- alone for the treatment of non-small cell lung cancer (NSCLC) that:
 - has spread to other parts of the body (metastatic) or cannot be removed by surgery, **and**
 - has a certain abnormal EGFR gene(s), whose disease has worsened on or after platinum-based chemotherapy

Your healthcare provider will perform a test to make sure that RYBREVANT is right for you.

It is not known if RYBREVANT is safe and effective in children.

Before you receive RYBREVANT, tell your healthcare provider about all of your medical conditions, including if you:

- have a history of lung or breathing problems
- are pregnant or plan to become pregnant. RYBREVANT can harm your unborn baby.

Females who are able to become pregnant:

- Your healthcare provider should do a pregnancy test before you start treatment with RYBREVANT.
- You should use effective birth control (contraception) during treatment and for 3 months after your last dose of RYBREVANT.
- Tell your healthcare provider right away if you become pregnant or think you might be pregnant during treatment with RYBREVANT.
- are breastfeeding or plan to breastfeed. It is not known if RYBREVANT passes into your breast milk. Do not breastfeed during treatment and for 3 months after your last dose of RYBREVANT.

Tell your healthcare provider about all the medicines you take, including prescription and over-the-counter medicines, vitamins, and herbal supplements.

How will I receive RYBREVANT?

- RYBREVANT will be given to you by your healthcare provider by intravenous infusion into your vein.
- Your healthcare provider will decide the time between doses as well as how many treatments you will receive.
- Your healthcare provider will give you medicines before each dose of RYBREVANT to help reduce the risk of infusion-related reactions.
- RYBREVANT may be given in combination with the medicines carboplatin and pemetrexed. If you have any questions about these medicines, ask your healthcare provider.
- If you miss any appointments, call your healthcare provider as soon as possible to reschedule your appointment.

What should I avoid while receiving RYBREVANT?

RYBREVANT can cause skin reactions. You should limit your time in the sun during and for 2 months after your treatment with RYBREVANT. Wear protective clothing and use sunscreen during treatment with RYBREVANT.

What are the possible side effects of RYBREVANT?

RYBREVANT may cause serious side effects, including:

- **infusion-related reactions.** Infusion-related reactions are common with RYBREVANT and can be severe or serious. Tell your healthcare provider right away if you get any of the following symptoms during your infusion of RYBREVANT:
 - shortness of breath
 - fever
 - chills
 - nausea
 - flushing
 - chest discomfort
 - lightheadedness
 - vomiting
- **lung problems.** RYBREVANT may cause lung problems that may lead to death. Symptoms may be similar to those symptoms from lung cancer. Tell your healthcare provider right away if you get any new or worsening lung symptoms, including shortness of breath, cough, or fever.
- **skin problems.** RYBREVANT may cause rash, itching, and dry skin. You may use alcohol-free moisturizing cream for dry skin. Tell your healthcare provider right away if you get any skin reactions. Your healthcare provider may treat you with a medicine(s) or send you to see a skin specialist (dermatologist) if you get skin reactions during treatment with RYBREVANT. See “What should I avoid while receiving RYBREVANT?”
- **eye problems.** RYBREVANT may cause eye problems. Tell your healthcare provider right away if you get symptoms of eye problems which may include:
 - eye pain
 - dry eyes
 - eye redness
 - blurred vision
 - changes in vision
 - itchy eyes
 - excessive tearing
 - sensitivity to light

Your healthcare provider may send you to see an eye specialist (ophthalmologist) if you get eye problems during treatment with RYBREVANT. You should not use contact lenses until your eye symptoms are checked by a healthcare provider.

The most common side effects of RYBREVANT in combination with carboplatin and pemetrexed include:

- rash
- infected skin around the nail
- sores in the mouth
- infusion-related reactions
- feeling very tired
- swelling of hands, ankles, feet, face, or all of your body
- constipation
- decreased appetite
- nausea
- COVID-19
- diarrhea
- vomiting
- changes in certain blood tests

The most common side effects of RYBREVANT when given alone:

- rash
- infusion-related reactions
- infected skin around the nail
- muscle and joint pain
- shortness of breath
- nausea
- feeling very tired
- swelling of hands, ankles, feet, face, or all of your body
- sores in the mouth
- cough
- constipation
- vomiting
- changes in certain blood tests

Your healthcare provider may temporarily stop, decrease your dose or completely stop your treatment with RYBREVANT if you have serious side effects.

These are not all of the possible side effects of RYBREVANT.

Call your doctor for medical advice about side effects. You may report side effects to FDA at 1-800-FDA-1088.

General information about safe and effective use of RYBREVANT

Medicines are sometimes prescribed for purposes other than those listed in a Patient Information leaflet. You can ask your healthcare provider or pharmacist for information about RYBREVANT that is written for health professionals.

What are the ingredients of RYBREVANT?

Active ingredient: amivantamab-vmjw

Inactive ingredients: EDTA disodium salt dihydrate, L-histidine, L-histidine hydrochloride monohydrate, L-methionine, polysorbate 80, sucrose, and water for injection.

Product of Ireland

Manufactured by: Janssen Biotech, Inc., Horsham, PA 19044, USA. U.S. License Number 1864

For patent information: www.janssenpatents.com

© 2022 Janssen Pharmaceutical Companies

For more information, call 1-800-526-7736 (1-800-JANSSEN) or go to www.RYBREVANT.com.

This Patient Information has been approved by the U.S. Food and Drug Administration.

Revised: March/2024