

FULL PRESCRIBING INFORMATION

1 INDICATIONS AND USAGE

TABRECTA is indicated for the treatment of adult patients with metastatic non-small cell lung cancer (NSCLC) whose tumors have a mutation that leads to mesenchymal-epithelial transition (MET) exon 14 skipping as detected by an FDA-approved test.

2 DOSAGE AND ADMINISTRATION

2.1 Patient Selection

Select patients for treatment with TABRECTA based on the presence of a mutation that leads to MET exon 14 skipping in tumor or plasma specimens [see *Clinical Studies (14)*]. If a mutation that leads to MET exon 14 skipping is not detected in a plasma specimen, test tumor tissue if feasible. Information on FDA-approved tests is available at: <http://www.fda.gov/CompanionDiagnostics>.

2.2 Recommended Dosage

The recommended dosage of TABRECTA is 400 mg orally twice daily with or without food.

Swallow TABRECTA tablets whole. Do not break, crush or chew the tablets.

If a patient misses or vomits a dose, instruct the patient not to make up the dose, but to take the next dose at its scheduled time.

2.3 Dosage Modifications for Adverse Reactions

The recommended dose reductions for the management of adverse reactions are listed in Table 1.

Table 1: Recommended TABRECTA Dose Reductions for Adverse Reactions

Dose Reduction	Dose and Schedule
First	300 mg orally twice daily
Second	200 mg orally twice daily

Permanently discontinue TABRECTA in patients who are unable to tolerate 200 mg orally twice daily.

The recommended dosage modifications of TABRECTA for adverse reactions are provided in Table 2.

Table 2: Recommended TABRECTA Dosage Modifications for Adverse Reactions

Adverse Reaction	Severity	Dosage Modification
Interstitial Lung Disease (ILD)/Pneumonitis <i>[see Warnings and Precautions (5.1)]</i>	Any grade	Permanently discontinue TABRECTA.
Increased ALT and/or AST without increased total bilirubin <i>[see Warnings and Precautions (5.2)]</i>	Grade 3	Withhold TABRECTA until recovery to baseline ALT/AST. If recovered to baseline within 7 days, then resume TABRECTA at the same dose; otherwise resume TABRECTA at a reduced dose.
	Grade 4	Permanently discontinue TABRECTA.

Adverse Reaction	Severity	Dosage Modification
Increased ALT and/or AST with increased total bilirubin in the absence of cholestasis or hemolysis <i>[see Warnings and Precautions (5.2)]</i>	ALT and/or AST greater than 3 times ULN with total bilirubin greater than 2 times ULN	Permanently discontinue TABRECTA.
Increased total bilirubin without concurrent increased ALT and/or AST <i>[see Warnings and Precautions (5.2)]</i>	Grade 2	Withhold TABRECTA until recovery to baseline bilirubin. If recovered to baseline within 7 days, then resume TABRECTA at the same dose; otherwise resume TABRECTA at a reduced dose.
	Grade 3	Withhold TABRECTA until recovery to baseline bilirubin. If recovered to baseline within 7 days, then resume TABRECTA at a reduced dose; otherwise permanently discontinue TABRECTA.
	Grade 4	Permanently discontinue TABRECTA.
Increased lipase or amylase <i>[see Warnings and Precautions (5.3)]</i>	Grade 3	Withhold TABRECTA until \leq Grade 2 or baseline. If recovered to baseline or \leq Grade 2 within 14 days, resume TABRECTA at a reduced dose; otherwise permanently discontinue TABRECTA.
	Grade 4	Permanently discontinue TABRECTA.
Pancreatitis <i>[see Warnings and Precautions (5.3)]</i>	Grade 3 or Grade 4	Permanently discontinue TABRECTA
Other Adverse Reactions <i>[see Adverse Reactions (6.1)]</i>	Grade 2	Maintain dose level. If intolerable, consider withholding TABRECTA until resolved, then resume TABRECTA at a reduced dose.
	Grade 3	Withhold TABRECTA until resolved, then resume TABRECTA at a reduced dose.
	Grade 4	Permanently discontinue TABRECTA.

Abbreviations: ALT, alanine aminotransferase; AST, aspartate aminotransferase; ILD, interstitial lung disease; ULN, upper limit of normal.

Grading according to CTCAE Version 5.0 (CTCAE = Common Terminology Criteria for Adverse Events).

3 DOSAGE FORMS AND STRENGTHS

Tablets:

- 150 mg: pale orange brown, ovaloid, curved film-coated with beveled edges, unscored, debossed with ‘DU’ on one side and ‘NVR’ on the other side

- 200 mg: yellow, ovaloid, curved film-coated with beveled edges, unscored, debossed with 'LO' on one side and 'NVR' on the other side

4 CONTRAINDICATIONS

None.

5 WARNINGS AND PRECAUTIONS

5.1 Interstitial Lung Disease (ILD)/Pneumonitis

ILD/pneumonitis, which can be fatal, occurred in patients treated with TABRECTA [*see Adverse Reactions (6.1)*]. ILD/pneumonitis occurred in 4.8% of patients treated with TABRECTA in GEOMETRY mono-1, with 1.9% of patients experiencing Grade 3 ILD/pneumonitis and one patient experiencing death (0.3%). Nine patients (2.4%) discontinued TABRECTA due to ILD/pneumonitis. The median time-to-onset of Grade 3 or higher ILD/pneumonitis was 1.8 months (range: 0.2 months to 1.7 years).

Monitor for new or worsening pulmonary symptoms indicative of ILD/pneumonitis (e.g., dyspnea, cough, fever). Immediately withhold TABRECTA in patients with suspected ILD/pneumonitis and permanently discontinue if no other potential causes of ILD/pneumonitis are identified [*see Dosage and Administration (2.3)*].

5.2 Hepatotoxicity

Hepatotoxicity occurred in patients treated with TABRECTA [*see Adverse Reactions (6.1)*]. Increased alanine aminotransferase (ALT)/aspartate aminotransferase (AST) occurred in 15% of patients treated with TABRECTA in GEOMETRY mono-1. Grade 3 or 4 increased ALT/AST occurred in 7% of patients. Three patients (0.8%) discontinued TABRECTA due to increased ALT/AST. The median time-to-onset of Grade 3 or higher increased ALT/AST was 1.8 months (range: 0.5 to 46.4 months).

Monitor liver function tests (including ALT, AST, and total bilirubin) prior to the start of TABRECTA, every 2 weeks during the first 3 months of treatment, then once a month or as clinically indicated, with more frequent testing in patients who develop increased transaminases or bilirubin. Based on the severity of the adverse reaction, withhold, dose reduce, or permanently discontinue TABRECTA [*see Dosage and Administration (2.3)*].

5.3 Pancreatic Toxicity

Elevations in amylase and lipase levels occurred in patients treated with TABRECTA [*see Adverse Reactions (6.1)*]. Increased amylase/lipase occurred in 14% of patients treated with TABRECTA in GEOMETRY mono-1. Grade 3 and 4 increased amylase/lipase occurred in 7% and 1.9% of patients, respectively. Three patients (0.8%) discontinued TABRECTA due to increased amylase/lipase. The median time-to-onset of Grade 3 or higher increased amylase/lipase was 2 months (range: 0.03 to 31.2 months). Pancreatitis (Grade 3) occurred in one patient (0.3%); TABRECTA was permanently discontinued for this event.

Monitor amylase and lipase at baseline and regularly during treatment with TABRECTA. Based on the severity of the adverse drug reaction, temporarily withhold, dose reduce, or permanently discontinue TABRECTA [*see Dosage and Administration (2.3)*].

5.4 Risk of Photosensitivity

Based on findings from animal studies, there is a potential risk of photosensitivity reactions with TABRECTA [*see Nonclinical Toxicology (13.2)*]. In GEOMETRY mono-1, it was recommended that patients use precautionary measures against ultraviolet exposure such as use of sunscreen or protective clothing during treatment with TABRECTA. Advise patients to limit direct ultraviolet exposure during treatment with TABRECTA.

5.5 Embryo-Fetal Toxicity

Based on findings from animal studies and its mechanism of action, TABRECTA can cause fetal harm when administered to a pregnant woman. Oral administration of capmatinib to pregnant rats and rabbits during the period of organogenesis resulted in malformations at exposures less than the human exposure based on area under the curve (AUC) at the 400 mg twice daily clinical dose. Advise pregnant women of the potential risk to a fetus. Advise females of reproductive potential to use effective contraception during treatment with TABRECTA and for 1 week after the last dose. Advise males with female partners of reproductive potential to use effective contraception during treatment with TABRECTA and for 1 week after the last dose [*see Use in Specific Populations (8.1, 8.3)*].

6 ADVERSE REACTIONS

The following clinically significant adverse reactions are described elsewhere in the labeling:

- ILD/Pneumonitis [see *Warnings and Precautions (5.1)*]
- Hepatotoxicity [see *Warnings and Precautions (5.2)*]
- Pancreatic Toxicity [see *Warnings and Precautions (5.3)*]

6.1 Clinical Trials Experience

Because clinical trials are conducted under widely varying conditions, adverse reaction rates observed in the clinical trials of a drug cannot be directly compared to rates in the clinical trials of another drug and may not reflect the rates observed in practice.

Metastatic Non-Small Cell Lung Cancer

The safety of TABRECTA was evaluated in GEOMETRY mono-1 [see *Clinical Studies (14)*]. Patients received TABRECTA 400 mg orally twice daily until disease progression or unacceptable toxicity (N=373). Among patients who received TABRECTA, 37% were exposed for at least 6 months and 22% were exposed for at least one year.

Serious adverse reactions occurred in 53% of patients who received TABRECTA. Serious adverse reactions in $\geq 2\%$ of patients included dyspnea (7%), pneumonia (7%), pleural effusion (4.3%), musculoskeletal pain (3.8%), general physical health deterioration (2.9%), ILD/pneumonitis (2.7%), and vomiting (2.4%). Fatal adverse reactions occurred in 0.5% of patients who received TABRECTA, including pneumonitis (0.3%) and death, not otherwise specified (0.3%).

Permanent discontinuation of TABRECTA due to an adverse reaction occurred in 17% of patients. The most frequent adverse reactions ($\geq 1\%$) leading to permanent discontinuation of TABRECTA were ILD/pneumonitis (2.4%), edema (2.4%), fatigue (1.3%), and pneumonia (1.1%).

Dose interruptions due to an adverse reaction occurred in 57% of patients who received TABRECTA. Adverse reactions requiring dosage interruption in $> 2\%$ of patients who received TABRECTA included edema, increased blood creatinine, nausea, increased lipase, vomiting, increased ALT, dyspnea, pneumonia, fatigue, increased amylase, increased AST, musculoskeletal pain, abdominal pain, and increased blood bilirubin.

Dose reductions due to an adverse reaction occurred in 26% of patients who received TABRECTA. Adverse reactions requiring dosage reductions in $> 2\%$ of patients who received TABRECTA included edema, increased ALT and increased blood creatinine.

The most common adverse reactions ($\geq 20\%$) in patients who received TABRECTA were edema, nausea, musculoskeletal pain, fatigue, vomiting, dyspnea, cough, and decreased appetite.

Table 3 summarizes the adverse reactions in GEOMETRY mono-1.

Table 3: Adverse Reactions ($\geq 10\%$) in Patients Who Received TABRECTA in GEOMETRY mono-1

Adverse Reactions	TABRECTA (N = 373)	
	Grades 1 to 4 (%)	Grades 3 to 4 (%)
General disorders and administration-site conditions		
Edema ^a	59	13
Musculoskeletal pain ^b	40	4.3
Fatigue ^c	34	8
Pyrexia ^d	14	0.8
Weight decreased	11	0.5
Gastrointestinal disorders		
Nausea	46	2.4
Vomiting	28	2.4
Constipation	19	0.8
Diarrhea	19	0.5
Respiratory, thoracic, and mediastinal disorders		
Dyspnea	25	7

Adverse Reactions	TABRECTA (N = 373)	
	Grades 1 to 4 (%)	Grades 3 to 4 (%)
Cough ^c	21	0.5
Pneumonia ^f	13	6
Metabolism and nutrition disorders		
Decreased appetite	21	1.1
Skin and Subcutaneous Tissue Disorders		
Rash ^g	12	0.5
Nervous System Disorders		
Dizziness ^h	13	0.5

^a Edema includes edema peripheral, generalized edema, face edema, edema, localized edema, edema genital, eyelid edema, peripheral swelling, scrotal edema, and penile edema.

^b Musculoskeletal pain includes arthralgia, back pain, bone pain, musculoskeletal chest pain, musculoskeletal pain, myalgia, neck pain, non-cardiac chest pain, pain in extremity, pain in jaw, spinal pain.

^c Fatigue includes fatigue and asthenia.

^d Pyrexia includes pyrexia and body temperature increased.

^e Cough includes upper airway cough syndrome, and productive cough.

^f Pneumonia includes pneumonia aspiration, pneumonia, pneumonia influenzal, pneumonia bacterial, lower respiratory tract infection, and lung abscess.

^g Rash includes rash, dermatitis acneiform, rash maculo-papular, eczema, erythema multiforme, rash macular, dermatitis, rash erythematous, rash pustular, dermatitis bullous, and rash vesicular.

^h Dizziness includes dizziness, vertigo, and vertigo positional.

Clinically relevant adverse reactions occurring in < 10% of patients treated with TABRECTA included pruritus (including allergic pruritus), ILD/pneumonitis, cellulitis, acute kidney injury (including renal failure), urticaria, and acute pancreatitis.

Table 4 summarizes the laboratory abnormalities in GEOMETRY mono-1.

Table 4: Select Laboratory Abnormalities (≥ 20%) Worsening from Baseline in Patients Who Received TABRECTA in GEOMETRY mono-1

Laboratory Abnormalities	TABRECTA ^a	
	Grades 1 to 4 (%)	Grades 3 to 4 (%)
Chemistry		
Decreased albumin	72	1.9
Increased creatinine	65	0.5
Increased alanine aminotransferase	39	9
Increased amylase	34	4.7
Increased alkaline phosphatase	32	0.6
Increased gamma-glutamyltransferase	30	6
Increased lipase	29	9
Increased aspartate aminotransferase	28	6
Decreased phosphate	26	4.4
Increased potassium	25	4.1
Decreased sodium	24	6
Decreased glucose	23	0.3
Hematology		
Decreased lymphocytes	45	14
Decreased leukocytes	25	1.7
Decreased hemoglobin	24	2.8

^a The denominator used to calculate the rate varied from 359 to 364 based on the number of patients with a baseline value and at least one post-treatment value.

7 DRUG INTERACTIONS

7.1 Effect of Other Drugs on TABRECTA

Strong CYP3A Inhibitors

Coadministration of TABRECTA with a strong CYP3A inhibitor increased capmatinib exposure, which may increase the incidence and severity of adverse reactions of TABRECTA [see *Clinical Pharmacology (12.3)*]. Closely monitor patients for adverse reactions during coadministration of TABRECTA with strong CYP3A inhibitors.

Strong and Moderate CYP3A Inducers

Coadministration of TABRECTA with a strong CYP3A inducer decreased capmatinib exposure. Coadministration of TABRECTA with a moderate CYP3A inducer may also decrease capmatinib exposure. Decreases in capmatinib exposure may decrease TABRECTA anti-tumor activity [see *Clinical Pharmacology (12.3)*]. Avoid coadministration of TABRECTA with strong and moderate CYP3A inducers.

7.2 Effect of TABRECTA on Other Drugs

CYP1A2 Substrates

Coadministration of TABRECTA increased the exposure of a CYP1A2 substrate, which may increase the adverse reactions of these substrates [see *Clinical Pharmacology (12.3)*]. If coadministration is unavoidable between TABRECTA and CYP1A2 substrates where minimal concentration changes may lead to serious adverse reactions, decrease the CYP1A2 substrate dosage in accordance with the approved prescribing information.

P-glycoprotein (P-gp) and Breast Cancer Resistance Protein (BCRP) Substrates

Coadministration of TABRECTA increased the exposure of a P-gp substrate and a BCRP substrate, which may increase the adverse reactions of these substrates [see *Clinical Pharmacology (12.3)*]. If coadministration is unavoidable between TABRECTA and P-gp or BCRP substrates where minimal concentration changes may lead to serious adverse reactions, decrease the P-gp or BCRP substrate dosage in accordance with the approved prescribing information.

MATE1 and MATE2K Substrates

Coadministration of TABRECTA may increase the exposure of MATE1 and MATE2K substrates, which may increase the adverse reactions of these substrates [see *Clinical Pharmacology (12.3)*]. If coadministration is unavoidable between TABRECTA and MATE1 or MATE2K substrates where minimal concentration changes may lead to serious adverse reactions, decrease the MATE1 or MATE2K substrate dosage in accordance with the approved prescribing information.

8 USE IN SPECIFIC POPULATIONS

8.1 Pregnancy

Risk Summary

Based on findings from animal studies and its mechanism of action [see *Clinical Pharmacology (12.1)*], TABRECTA can cause fetal harm when administered to a pregnant woman. There are no available data on TABRECTA use in pregnant women. Oral administration of capmatinib to pregnant rats and rabbits during the period of organogenesis resulted in malformations at maternal exposures less than the human exposure based on AUC at the 400 mg twice daily clinical dose (see *Data*). Advise pregnant women of the potential risk to a fetus.

In the U.S. general population, the estimated background risk of major birth defects and miscarriage in clinically recognized pregnancies is 2% to 4% and 15% to 20%, respectively.

Data

Animal Data

In rats, maternal toxicity (reduced body weight gain and food consumption) occurred at 30 mg/kg/day (approximately 1.4 times the human exposure based on AUC at the 400 mg twice daily clinical dose). Fetal effects included reduced fetal weights, irregular/incomplete ossification, and increased incidences of fetal malformations (e.g., abnormal flexure/inward malrotation of hindpaws/forepaws, thinness of forelimbs, lack of/reduced flexion at the humerus/ulna joints, and narrowed or small tongue) at doses of ≥ 10 mg/kg/day (approximately 0.6 times the human exposure based on AUC at the 400 mg twice daily clinical dose).

In rabbits, no maternal effects were detected at doses up to 60 mg/kg/day (approximately 1.5 times the human exposure based on AUC at the 400 mg twice daily clinical dose). Fetal effects included small lung lobe at ≥ 5 mg/kg/day (approximately 0.016 times the human exposure based on AUC at the 400 mg twice daily clinical dose), and reduced fetal weights, irregular/incomplete ossification and increased incidences of fetal malformations (e.g., abnormal flexure/malrotation of hindpaws/forepaws, thinness of forelimbs/hindlimbs, lack of/reduced flexion at the humerus/ulna joints, small lung lobes, narrowed or small tongue) at the dose of 60 mg/kg/day.

8.2 Lactation

Risk Summary

There are no data on the presence of capmatinib or its metabolites in either human or animal milk or its effects on the breastfed child or on milk production. Because of the potential for serious adverse reactions in breastfed children, advise women not to breastfeed during treatment with TABRECTA and for 1 week after the last dose.

8.3 Females and Males of Reproductive Potential

Based on animal data, TABRECTA can cause malformations at doses less than the human exposure based on AUC at the 400 mg twice daily clinical dose [see *Use in Specific Populations (8.1)*].

Pregnancy Testing

Verify pregnancy status for females of reproductive potential prior to starting treatment with TABRECTA.

Contraception

Females

Advise females of reproductive potential to use effective contraception during treatment with TABRECTA and for 1 week after the last dose.

Males

Advise males with female partners of reproductive potential to use effective contraception during treatment with TABRECTA and for 1 week after the last dose.

8.4 Pediatric Use

Safety and effectiveness of TABRECTA in pediatric patients have not been established.

8.5 Geriatric Use

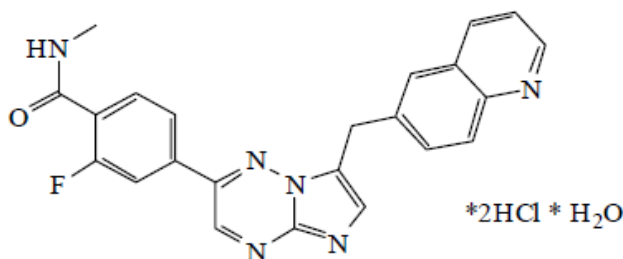
In GEOMETRY mono-1, 61% of the 373 patients were 65 years or older and 18% were 75 years or older. No overall differences in the safety or effectiveness were observed between these patients and younger patients.

8.6 Renal Impairment

No dosage adjustment is recommended in patients with mild (baseline creatinine clearance [CL_{cr}] 60 to 89 mL/min by Cockcroft-Gault) or moderate renal impairment (CL_{cr} 30 to 59 mL/min) [see *Clinical Pharmacology (12.3)*]. TABRECTA has not been studied in patients with severe renal impairment (CL_{cr} 15 to 29 mL/min).

11 DESCRIPTION

Capmatinib is a kinase inhibitor. The chemical name is 2-Fluoro-*N*-methyl-4-[7-(quinolin-6-ylmethyl)imidazo[1,2-*b*][1,2,4]triazin-2-yl]benzamide—hydrogen chloride—water (1/2/1). The molecular formula for capmatinib hydrochloride is C₂₃H₂₁Cl₂FN₆O₂. The relative molecular mass is 503.36 g/mol for the hydrochloride salt and 412.43 g/mol for the free base. The chemical structure for capmatinib hydrochloride is shown below:



Capmatinib hydrochloride is a yellow powder with a pK_{a1} of 0.9 (calculated) and pK_{a2} of 4.5 (experimentally). Capmatinib hydrochloride is slightly soluble in acidic aqueous solutions at pH 1 and 2 and of further decreasing solubility towards neutral condition. The log of the distribution coefficient (n-octanol/acetate buffer pH 4.0) is 1.2.

TABRECTA is supplied for oral use as ovaloid, curved film-coated tablets with beveled edges, unscored containing 150 mg (pale orange brown color) or 200 mg (yellow color) capmatinib (equivalent to 176.55 mg or 235.40 mg respectively of capmatinib hydrochloride anhydrous). Each tablet strength contains colloidal silicon dioxide; crospovidone; magnesium stearate; mannitol; microcrystalline cellulose; povidone; and sodium lauryl sulfate as inactive ingredients.

The 150 mg tablet coating contains ferric oxide, red; ferric oxide, yellow; ferrosferric oxide; hypromellose; polyethylene glycol (PEG) 4000; talc; and titanium dioxide. The 200 mg tablet coating contains ferric oxide, yellow; hypromellose; polyethylene glycol (PEG) 4000; talc; and titanium dioxide.

12 CLINICAL PHARMACOLOGY

12.1 Mechanism of Action

Capmatinib is a kinase inhibitor that targets MET, including the mutant variant produced by exon 14 skipping. MET exon 14 skipping results in a protein with a missing regulatory domain that reduces its negative regulation leading to increased downstream MET signaling. Capmatinib inhibited cancer cell growth driven by a mutant MET variant lacking exon 14 at clinically achievable concentrations and demonstrated anti-tumor activity in murine tumor xenograft models derived from human lung tumors with either a mutation leading to MET exon 14 skipping or MET amplification. Capmatinib inhibited the phosphorylation of MET triggered by binding of hepatocyte growth factor or by MET amplification, as well as MET-mediated phosphorylation of downstream signaling proteins and proliferation and survival of MET-dependent cancer cells.

12.2 Pharmacodynamics

Exposure-Response

Capmatinib exposure-response relationships and the time course of pharmacodynamics response are unknown.

Cardiac Electrophysiology

No large mean increase in QTc (i.e. > 20 ms) was detected following treatment with TABRECTA at the recommended dosage of 400 mg orally twice daily.

12.3 Pharmacokinetics

Capmatinib exposure (AUC_{0-12h} and C_{max}) increased approximately proportionally over a dose range of 200 mg (0.5 times the recommended dosage) to 400 mg. Capmatinib reached steady-state by day 3 following twice daily dosing, with a mean (% coefficient of variation [%CV]) accumulation ratio of 1.5 (41%).

Absorption

After administration of TABRECTA 400 mg orally in patients with cancer, capmatinib peak plasma concentrations (C_{max}) were reached in approximately 1 to 2 hours (T_{max}). The absorption of capmatinib after oral administration is estimated to be greater than 70%.

Effect of Food

A high-fat meal (containing approximately 1000 calories and 50% fat) in healthy subjects increased capmatinib AUC_{0-12h} by 46% with no change in C_{max} compared to under fasted conditions. A low-fat meal (containing approximately 300 calories and 20% fat) in healthy subjects had no clinically meaningful effect on capmatinib exposure. When capmatinib was administered at 400 mg orally twice daily in cancer patients, exposure (AUC_{0-12h}) was similar after administration of capmatinib with food and under fasted conditions.

Distribution

Capmatinib plasma protein binding is 96%, independent of capmatinib concentration. The apparent mean volume of distribution at steady-state is 164 L.

The blood-to-plasma ratio was 1.5, but decreased at higher concentrations to 0.9.

Elimination

The effective elimination half-life of capmatinib is 6.5 hours. The mean (%CV) steady-state apparent clearance of capmatinib is 24 L/hr (82%).

Metabolism

Capmatinib is primarily metabolized by CYP3A4 and aldehyde oxidase.

Excretion

Following a single oral administration of radiolabeled-capmatinib to healthy subjects, 78% of the total radioactivity was recovered in feces with 42% as unchanged and 22% was recovered in urine with negligible as unchanged.

Specific Populations

No clinically significant effects on the pharmacokinetic parameters of capmatinib were identified for the following covariates assessed: age (26 to 90 years), sex, race (White, Asian, Native American, Black, unknown), body weight (35 to 131 kg), mild to moderate renal impairment (baseline CL_{cr} 30 to 89 mL/min by Cockcroft-Gault) and mild, moderate or severe hepatic impairment (Child-Pugh classification). The effect of severe renal impairment (baseline CL_{cr} 15 to 29 mL/min) on capmatinib pharmacokinetics has not been studied.

Drug Interaction Studies

Clinical Studies and Model-Informed Approaches

Strong CYP3A Inhibitors: Coadministration with itraconazole (a strong CYP3A inhibitor) increased capmatinib AUC_{0-12h} by 42% with no change in capmatinib C_{max} .

Strong CYP3A Inducers: Coadministration with rifampicin (a strong CYP3A inducer) decreased capmatinib AUC_{0-12h} by 67% and decreased C_{max} by 56%.

Moderate CYP3A Inducers: Coadministration with efavirenz (a moderate CYP3A inducer) was predicted to decrease capmatinib AUC_{0-12h} by 44% and decrease C_{max} by 34%.

Proton Pump Inhibitors: Coadministration with rabeprazole (a proton pump inhibitor) decreased capmatinib AUC_{0-12h} by 25% and decreased C_{max} by 38%.

Substrates of CYP Enzymes: Coadministration of capmatinib increased caffeine (a CYP1A2 substrate) AUC_{0-12h} by 134% with no change in its C_{max} . Coadministration of capmatinib had no clinically meaningful effect on exposure of midazolam (a CYP3A substrate).

P-gp Substrates: Coadministration of capmatinib increased digoxin (a P-gp substrate) AUC_{0-INF} by 47% and increased C_{max} by 74%.

BCRP Substrates: Coadministration of capmatinib increased rosuvastatin (a BCRP substrate) AUC_{0-INF} by 108% and increased C_{max} by 204%.

In Vitro Studies

Transporter Systems: Capmatinib is a substrate of P-gp, but not a substrate of BCRP or MRP2. Capmatinib reversibly inhibits MATE1 and MATE2K, but does not inhibit OATP1B1, OATP1B3, OCT1, OAT1, OAT3, or MRP2.

13 NONCLINICAL TOXICOLOGY

13.1 Carcinogenesis, Mutagenesis, Impairment of Fertility

Carcinogenicity studies were not conducted with capmatinib. Capmatinib was not mutagenic in an in vitro bacterial reverse mutation assay and did not cause chromosomal aberrations in an in vitro chromosome aberration assay in human peripheral blood lymphocytes. Capmatinib was not clastogenic in an in vivo bone marrow micronucleus test in rats.

Dedicated fertility studies were not conducted with capmatinib. No effects on male and female reproductive organs occurred in general toxicology studies conducted in rats and monkeys at doses resulting in exposures of up to approximately 3.6 times the human exposure based on AUC at the 400 mg twice daily clinical dose.

13.2 Animal Toxicology and/or Pharmacology

In rats, capmatinib administration resulted in vacuolation of white matter of the brain in both 4- and 13-week studies at doses ≥ 2.2 times the human exposure (AUC) at the 400 mg twice daily clinical dose. In some cases, the brain lesions were associated with early death and/or convulsions or tremors. Concentrations of capmatinib in the brain tissue of rats was approximately 9% of the corresponding concentrations in plasma.

In vitro and in vivo assays demonstrated that capmatinib has some potential for photosensitization; however, the no-observed-adverse-effect level for in vivo photosensitization was 30 mg/kg/day (C_{max} of 14000 ng/mL), about 2.9 times the human C_{max} at the 400 mg twice daily clinical dose.

14 CLINICAL STUDIES

Metastatic NSCLC with a Mutation that Leads to MET Exon 14 Skipping

The efficacy of TABRECTA was evaluated in GEOMETRY mono-1, a multicenter, non-randomized, open-label, multi-cohort study (NCT02414139). Eligible patients were required to have NSCLC with a mutation that leads to MET exon 14 skipping, epidermal growth factor receptor (EGFR) wild-type and anaplastic lymphoma kinase (ALK) negative status, and at least one measurable lesion as defined by Response Evaluation Criteria in Solid Tumors (RECIST) version 1.1. Patients with symptomatic CNS metastases, clinically significant uncontrolled cardiac disease, or who received treatment with any MET or hepatocyte growth factor (HGF) inhibitor were not eligible for the study.

Out of the first 97 patients enrolled in GEOMETRY mono-1 following the central confirmation of MET exon 14 skipping by a RNA-based clinical trial assay, 78 patient samples were retested with the FDA-approved FoundationOne[®] CDx (22 treatment-naïve and 56 previously treated patients) to detect mutations that lead to MET exon 14 skipping. Out of 78 samples retested with FoundationOne[®] CDx, 73 samples were evaluable (20 treatment-naïve and 53 previously treated patients), 72 (20 treatment-naïve and 52 previously treated patients) of which were confirmed to have a mutation that leads to MET exon 14 skipping, demonstrating an estimated positive percentage agreement of 99% (72/73) between the clinical trial assay and the FDA-approved assay.

Patients received TABRECTA 400 mg orally twice daily until disease progression or unacceptable toxicity. The major efficacy outcome measure was overall response rate (ORR) as determined by a Blinded Independent Review Committee (BIRC) according to RECIST 1.1. An additional efficacy outcome measure was duration of response (DOR) by BIRC.

The efficacy population included 60 treatment-naïve patients and 100 previously treated patients. The median age was 71 years (range: 48 to 90 years); 61% female; 77% White; 25% had Eastern Cooperative Oncology Group (ECOG) Performance Status (PS) 0 and 74% had ECOG PS 1; 61% never smoked; 83% had adenocarcinoma; and 16% had CNS metastases. Among previously treated patients, 81% received one, 16% received two and 3% received three prior lines of systemic therapy. Amongst previously treated patients, 86% received prior platinum-based chemotherapy.

Efficacy results are presented in Table 5.

Table 5: Efficacy Results for Treatment-Naïve and Previously Treated Patients in GEOMETRY mono-1

Efficacy Parameters	Treatment-Naïve N = 60	Previously Treated N = 100
Overall Response Rate^{a,b} (95% CI)^c	68% (55, 80)	44% (34, 54)
Complete Response	5%	0
Partial Response	63%	44%
Duration of Response (DOR)^a		
Median (months) (95% CI) ^d	16.6 (8.4, 22.1)	9.7 (5.6, 13.0)
Patients % with DOR ≥ 12 months	49%	36%

Abbreviations: CI = Confidence Interval, NE=Not Estimable.

^a Blinded Independent Review Committee (BIRC) review.

^b Confirmed response.

^c Clopper and Pearson exact binomial 95% CI.

^d Based on Kaplan-Meier estimate.

16 HOW SUPPLIED/STORAGE AND HANDLING

How Supplied

TABRECTA (capmatinib) 150 mg and 200 mg tablets			
Strength	Description	Tablets per Bottle	NDC Number
150 mg	Pale orange brown, ovaloid, curved film-coated tablet with beveled edges, unscored, debossed with 'DU' on one side and 'NVR' on the other side.	56	0078-0709-56
200 mg	Yellow, ovaloid, curved film-coated tablet with beveled edges, unscored, debossed with 'LO' on one side and 'NVR' on the other side.	56	0078-0716-56

Storage

Dispense in the original package with the desiccant cartridge. Store at 20°C to 25°C (68°F to 77°F), excursions permitted between 15°C and 30°C (59°F and 86°F) [see *USP Controlled Room Temperature*]. Protect from moisture.

Discard any unused TABRECTA remaining after 6 weeks of first opening the bottle.

17 PATIENT COUNSELING INFORMATION

Advise the patient to read the FDA-approved patient labeling (Patient Information).

Interstitial Lung Disease (ILD)/Pneumonitis

Inform patients of the risks of severe or fatal ILD/pneumonitis. Advise patients to immediately contact their healthcare provider for new or worsening respiratory symptoms [see *Warnings and Precautions (5.1)*].

Hepatotoxicity

Inform patients that they will need to undergo lab tests to monitor liver function. Advise patients to immediately contact their healthcare provider for signs and symptoms of liver dysfunction [see *Warnings and Precautions (5.2)*].

Pancreatic Toxicity

Inform patients that they will need to undergo lab tests to monitor pancreatic function. Advise patients to immediately contact their healthcare provider for signs and symptoms of pancreatitis [see *Warnings and Precautions (5.3)*].

Risk of Photosensitivity

Inform patients that there is a potential risk of photosensitivity reactions with TABRECTA. Advise patients to limit direct ultraviolet exposure by using sunscreen or protective clothing during treatment with TABRECTA [see *Warnings and Precautions (5.4)*].

Embryo-Fetal Toxicity

Advise pregnant women of the potential risk to a fetus. Advise females of reproductive potential to inform their healthcare provider of a known or suspected pregnancy [see *Warnings and Precautions (5.5)*, *Use in Specific Populations (8.1)*].

Advise females of reproductive potential to use effective contraception during treatment with TABRECTA and for 1 week after the last dose [see *Use in Specific Populations (8.3)*].

Advise males with female partners of reproductive potential to use effective contraception during treatment with TABRECTA and for 1 week after the last dose [see *Use in Specific Populations (8.3)*].

Drug Interactions

Advise patients to inform their healthcare providers of all concomitant medications, including prescription medicines, over-the-counter drugs, vitamins, and herbal products [see *Drug Interactions (7)*].

Lactation

Advise women not to breastfeed during treatment with TABRECTA and for 1 week after the last dose [see *Use in Specific Populations (8.2)*].

Distributed by:

Novartis Pharmaceuticals Corporation
East Hanover, New Jersey 07936

© Novartis

T2022-47

PATIENT INFORMATION
TABRECTA® (ta brek tah)
(capmatinib) tablets

What is TABRECTA?

TABRECTA is a prescription medicine used to treat adults with a kind of lung cancer called non-small cell lung cancer (NSCLC) that:

- has spread to other parts of the body or cannot be removed by surgery (metastatic), and
- whose tumors have an abnormal mesenchymal epithelial transition (MET) gene

It is not known if TABRECTA is safe and effective in children.

Before taking TABRECTA, tell your healthcare provider about all of your medical conditions, including if you:

- have or have had lung or breathing problems other than your lung cancer
- have or have had liver problems
- have or have had pancreatic problems
- are pregnant or plan to become pregnant. TABRECTA can harm your unborn baby.

Females who are able to become pregnant:

- Your healthcare provider should do a pregnancy test before you start your treatment with TABRECTA.
- You should use effective birth control during treatment and for 1 week after your last dose of TABRECTA. Talk to your healthcare provider about birth control choices that might be right for you during this time.
- Tell your healthcare provider right away if you become pregnant or think you may be pregnant during treatment with TABRECTA.

Males who have female partners who can become pregnant:

- You should use effective birth control during treatment and for 1 week after your last dose of TABRECTA.
- are breastfeeding or plan to breastfeed. It is not known if TABRECTA passes into your breast milk. Do not breastfeed during treatment and for 1 week after your last dose of TABRECTA.

Tell your healthcare provider about all the medicines you take or start taking, including prescription and over-the-counter medicines, vitamins, and herbal supplements.

How should I take TABRECTA?

- Take TABRECTA exactly as your healthcare provider tells you.
- Take TABRECTA 2 times a day with or without food.
- Swallow TABRECTA tablets whole. Do not break, crush, or chew TABRECTA tablets.
- Do not change your dose or stop taking TABRECTA unless your healthcare provider tells you to.
- If you miss or vomit a dose of TABRECTA, **do not** make up the dose. Take your next dose at your regular scheduled time.

What should I avoid while taking TABRECTA?

- Your skin may be sensitive to the sun (photosensitivity) during treatment with TABRECTA. Use sunscreen or wear clothes that cover your skin during your treatment with TABRECTA to limit direct sunlight exposure.

What are the possible side effects of TABRECTA?

TABRECTA may cause serious side effects, including:

- **lung or breathing problems.** TABRECTA may cause inflammation of the lungs that can cause death. Tell your healthcare provider right away if you develop any new or worsening symptoms, including:
 - cough
 - fever
 - trouble breathing or shortness of breath
- **liver problems.** TABRECTA may cause abnormal liver blood test results. Your healthcare provider will do blood tests to check your liver function before you start treatment and during treatment with TABRECTA. Tell your healthcare provider right away if you develop any signs and symptoms of liver problems, including:
 - your skin or the white part of your eyes turns yellow (jaundice)
 - dark or “tea-colored” urine
 - light-colored stools (bowel movements)
 - confusion
 - tiredness
 - loss of appetite for several days or longer
 - nausea and vomiting
 - pain, aching, or tenderness on the right side of your stomach-area (abdomen)
 - weakness
 - swelling in your stomach-area
- **Pancreas problems.** TABRECTA may cause increases in your blood amylase and/or lipase levels that may indicate a problem with your pancreas. Your healthcare provider will do blood tests to check your pancreatic function before you start treatment and during treatment with TABRECTA. Tell your healthcare provider right away if you develop any signs and symptoms of pancreas problems, including:
 - upper stomach (abdominal) pain that may spread to your back and get worse with eating
 - weight loss

- nausea
- vomiting

- **risk of sensitivity to sunlight (photosensitivity).** See “What should I avoid while taking TABRECTA?”

The most common side effects of TABRECTA include:

<ul style="list-style-type: none"> ● swelling of your hands or feet ● nausea ● muscle or bone pain ● tiredness and weakness ● vomiting 	<ul style="list-style-type: none"> ● trouble breathing ● cough ● loss of appetite ● changes in certain blood tests
---	--

Your healthcare provider may change your dose, temporarily stop, or permanently stop treatment with TABRECTA if you develop certain side effects.

These are not all of the possible side effects of TABRECTA.

Call your doctor for medical advice about side effects. You may report side effects to FDA at 1-800-FDA-1088.

How should I store TABRECTA?

- Store TABRECTA at room temperature between 68°F to 77°F (20°C to 25°C).
- Store TABRECTA in the original package with the drying agent (desiccant) cartridge.
- Protect TABRECTA from moisture.
- Throw away (discard) any unused TABRECTA you have left after 6 weeks of first opening the bottle.

Keep TABRECTA and all medicines out of the reach of children.

General information about the safe and effective use of TABRECTA.

Medicines are sometimes prescribed for purposes other than those listed in a Patient Information leaflet. Do not use TABRECTA for a condition for which it was not prescribed. Do not give TABRECTA to other people, even if they have the same symptoms you have. It may harm them. You can ask your pharmacist or healthcare provider for information about TABRECTA that is written for health professionals.

What are the ingredients in TABRECTA?

Active ingredient: capmatinib

Inactive ingredients: Tablet core: colloidal silicon dioxide; crospovidone; magnesium stearate; mannitol; microcrystalline cellulose; povidone; and sodium lauryl sulfate.

Tablet coating (150 mg): ferric oxide, red; ferric oxide, yellow; ferrosoferric oxide; hypromellose; polyethylene glycol (PEG) 4000; talc; and titanium dioxide.

Tablet coating (200 mg): ferric oxide, yellow; hypromellose; polyethylene glycol (PEG) 4000; talc; and titanium dioxide.

Distributed by: Novartis Pharmaceuticals Corporation, East Hanover, New Jersey 07936
For more information, go to www.TABRECTA.com or call 1-844-638-5864.

© Novartis

T2022-48

This Patient Information has been approved by the U.S. Food and Drug Administration.

Revised: 8/2022