

HIGHLIGHTS OF PRESCRIBING INFORMATION

These highlights do not include all the information needed to use LORBRENA safely and effectively. See full prescribing information for LORBRENA.

LORBRENA® (lorlatinib) tablets, for oral use

Initial U.S. Approval: 2018

RECENT MAJOR CHANGES

Indications and Usage (1)	3/2021
Dosage and Administration, Patient Selection (2.1)	3/2021
Dosage and Administration, Dosage Modifications for Adverse Reactions (2.3)	3/2021
Dosage and Administration, Strong CYP3A Inducers (2.4)	1/2021
Dosage and Administration, Moderate CYP3A Inducers (2.5)	1/2021
Dosage and Administration, Severe Renal Impairment (2.6)	2/2021
Warnings and Precautions (5)	3/2021
Warnings and Precautions, Risk of Serious Hepatotoxicity with Concomitant Use of Strong CYP3A Inducers (5.1)	1/2021
Warnings and Precautions, Central Nervous System Effects (5.2)	1/2021

INDICATIONS AND USAGE

LORBRENA is a kinase inhibitor indicated for the treatment of adult patients with metastatic non-small cell lung cancer (NSCLC) whose tumors are anaplastic lymphoma kinase (ALK)-positive as detected by an FDA-approved test. (1, 2.1)

DOSAGE AND ADMINISTRATION

Recommended dosage: 100 mg orally once daily. (2.2)
Severe Renal Impairment: 75 mg orally once daily. (2.8, 8.7, 12.3)

DOSAGE FORMS AND STRENGTHS

Tablets: 25 mg or 100 mg. (3)

CONTRAINDICATIONS

Concomitant use with strong CYP3A inducers. (4)

WARNINGS AND PRECAUTIONS

- Risk of Serious Hepatotoxicity with Concomitant Use of Strong CYP3A Inducers: Discontinue strong CYP3A inducers for 3 plasma half-lives of the strong CYP3A inducer prior to initiating LORBRENA. (2.4, 5.1)
- Central Nervous System (CNS) Effects: CNS effects include seizures, psychotic effects and changes in cognitive function, mood (including suicidal ideation), speech, mental status, and sleep. Withhold and resume LORBRENA at same or reduced dose or permanently discontinue LORBRENA based on severity. (2.3, 5.2)
- Hyperlipidemia: Initiate or increase the dose of lipid-lowering agents. Withhold and resume LORBRENA at same or reduced dose based on severity. (2.3, 5.3)

- Atrioventricular Block: Withhold and resume LORBRENA at same or reduced dose based on severity. (2.3, 5.4)
- Interstitial Lung Disease/Pneumonitis: Immediately withhold LORBRENA in patients with suspected ILD/pneumonitis. Permanently discontinue LORBRENA for treatment-related ILD/pneumonitis of any severity. (2.3, 5.5)
- Hypertension: Monitor blood pressure after 2 weeks and then at least monthly during treatment. For severe hypertension, withhold LORBRENA, then dose reduce or permanently discontinue. (2.3, 5.6)
- Hyperglycemia: Assess fasting serum glucose prior to starting LORBRENA and regularly during treatment. If not adequately controlled with optimal medical management, withhold LORBRENA, then consider dose reduction or permanently discontinue, based on severity. (2.3, 5.7)
- Embryo-Fetal Toxicity: Can cause fetal harm. Advise females of reproductive potential of the potential risk to a fetus. Advise males and females of reproductive potential to use an effective non-hormonal method of contraception. (5.8, 7.2, 8.1, 8.3)

ADVERSE REACTIONS

Most common (incidence $\geq 20\%$) adverse reactions and Grade 3-4 laboratory abnormalities are edema, peripheral neuropathy, weight gain, cognitive effects, fatigue, dyspnea, arthralgia, diarrhea, mood effects, hypercholesterolemia, hypertriglyceridemia, and cough. (6.1)

To report SUSPECTED ADVERSE REACTIONS, contact Pfizer Inc. at 1-800-438-1985 or www.pfizer.com or FDA at 1-800-FDA-1088 or www.fda.gov/medwatch.

DRUG INTERACTIONS

- Strong CYP3A Inducers: Contraindicated. (2.4, 7.1)
- Moderate CYP3A Inducers: Avoid concomitant use. If coadministration cannot be avoided, increase the LORBRENA dose. (2.5, 7.1)
- Strong CYP3A Inhibitors: Avoid concomitant use; reduce LORBRENA dose if concomitant use cannot be avoided. (2.6, 7.1)
- Fluconazole: Avoid concomitant use; reduce LORBRENA dose if concomitant use cannot be avoided. (2.7, 7.1)
- Certain CYP3A Substrates: Avoid concomitant use with CYP3A substrates for which minimal concentration changes may lead to serious therapeutic failures. (7.2)
- Certain P-gp Substrates: Avoid concomitant use with P-gp substrates for which minimal concentration changes may lead to serious therapeutic failures. (7.2)

USE IN SPECIFIC POPULATIONS

Lactation: Advise not to breastfeed. (8.2)

See 17 for PATIENT COUNSELING INFORMATION and FDA-approved patient labeling.

Revised: 3/2021

FULL PRESCRIBING INFORMATION: CONTENTS*

1 INDICATIONS AND USAGE

2 DOSAGE AND ADMINISTRATION

- 2.1 Patient Selection
- 2.2 Recommended Dosage
- 2.3 Dosage Modifications for Adverse Reactions
- 2.4 Concomitant Use of Strong CYP3A Inducers
- 2.5 Concomitant Use of Moderate CYP3A Inducers
- 2.6 Dosage Modification for Strong CYP3A Inhibitors
- 2.7 Dosage Modification for Fluconazole
- 2.8 Dosage Modification for Severe Renal Impairment

3 DOSAGE FORMS AND STRENGTHS

4 CONTRAINDICATIONS

5 WARNINGS AND PRECAUTIONS

- 5.1 Risk of Serious Hepatotoxicity with Concomitant Use of Strong CYP3A Inducers
- 5.2 Central Nervous System Effects
- 5.3 Hyperlipidemia
- 5.4 Atrioventricular Block
- 5.5 Interstitial Lung Disease/Pneumonitis
- 5.6 Hypertension
- 5.7 Hyperglycemia
- 5.8 Embryo-Fetal Toxicity

6 ADVERSE REACTIONS

- 6.1 Clinical Trials Experience

7 DRUG INTERACTIONS

- 7.1 Effect of Other Drugs on LORBRENA
- 7.2 Effect of LORBRENA on Other Drugs

8 USE IN SPECIFIC POPULATIONS

- 8.1 Pregnancy
- 8.2 Lactation
- 8.3 Females and Males of Reproductive Potential
- 8.4 Pediatric Use
- 8.5 Geriatric Use
- 8.6 Hepatic Impairment
- 8.7 Renal Impairment

11 DESCRIPTION

12 CLINICAL PHARMACOLOGY

- 12.1 Mechanism of Action
- 12.2 Pharmacodynamics
- 12.3 Pharmacokinetics

13 NONCLINICAL TOXICOLOGY

- 13.1 Carcinogenesis, Mutagenesis, Impairment of Fertility
- 13.2 Animal Toxicology and/or Pharmacology

14 CLINICAL STUDIES
16 HOW SUPPLIED/STORAGE AND HANDLING
17 PATIENT COUNSELING INFORMATION

*Sections or subsections omitted from the full prescribing information are not listed.

FULL PRESCRIBING INFORMATION

1 INDICATIONS AND USAGE

LORBRENA[®] is indicated for the treatment of adult patients with metastatic non-small cell lung cancer (NSCLC) whose tumors are anaplastic lymphoma kinase (ALK)-positive as detected by an FDA-approved test.

2 DOSAGE AND ADMINISTRATION

2.1 Patient Selection

Select patients for the treatment of metastatic NSCLC with LORBRENA based on the presence of ALK positivity in tumor specimens [*see Indications and Usage (1) and Clinical Studies (14)*].

Information on FDA-approved tests for the detection of ALK rearrangements in NSCLC is available at <http://www.fda.gov/CompanionDiagnostics>.

2.2 Recommended Dosage

The recommended dosage of LORBRENA is 100 mg orally once daily, with or without food, until disease progression or unacceptable toxicity [*see Clinical Pharmacology (12.3)*].

Swallow tablets whole. Do not chew, crush or split tablets. Do not ingest if tablets are broken, cracked, or otherwise not intact.

Take LORBRENA at the same time each day. If a dose is missed, then take the missed dose unless the next dose is due within 4 hours. Do not take 2 doses at the same time to make up for a missed dose.

Do not take an additional dose if vomiting occurs after LORBRENA but continue with the next scheduled dose.

2.3 Dosage Modifications for Adverse Reactions

The recommended dose reductions are:

- First dose reduction: LORBRENA 75 mg orally once daily
- Second dose reduction: LORBRENA 50 mg orally once daily

Permanently discontinue LORBRENA in patients who are unable to tolerate 50 mg orally once daily.

Dosage modifications for adverse reactions of LORBRENA are provided in Table 1.

Table 1 Recommended LORBRENA Dosage Modifications for Adverse Reactions

Adverse Reaction ^a	Dosage Modifications
Central Nervous System Effects [see Warnings and Precautions (5.2)]	
Grade 1	Continue at the same dose or withhold the dose until recovery to baseline. Resume LORBRENA at the same dose or at a reduced dose.
Grade 2 <u>OR</u> Grade 3	Withhold dose until Grade 0 or 1. Resume LORBRENA at a reduced dose.
Grade 4	Permanently discontinue LORBRENA.
Hyperlipidemia [see Warnings and Precautions (5.3)]	
Grade 4 hypercholesterolemia <u>OR</u> Grade 4 hypertriglyceridemia	Withhold LORBRENA until recovery of hypercholesterolemia and/or hypertriglyceridemia to less than or equal to Grade 2. Resume LORBRENA at the same dose. If severe hypercholesterolemia and/or hypertriglyceridemia recurs, resume LORBRENA at a reduced dose.
Atrioventricular (AV) Block [see Warnings and Precautions (5.4)]	
Second-degree AV block	Withhold LORBRENA until PR interval is less than 200 ms. Resume LORBRENA at a reduced dose.
First occurrence of complete AV block	Withhold LORBRENA until <ul style="list-style-type: none"> • pacemaker placed <u>OR</u> • PR interval less than 200 ms. If a pacemaker is placed, resume LORBRENA at the same dose. If no pacemaker is placed, resume LORBRENA at a reduced dose.
Recurrent complete AV block	Place pacemaker or permanently discontinue LORBRENA.
Interstitial Lung Disease (ILD)/Pneumonitis [see Warnings and Precautions (5.5)]	
Any Grade treatment-related ILD/Pneumonitis	Permanently discontinue LORBRENA.

Table 1 Recommended LORBRENA Dosage Modifications for Adverse Reactions

Adverse Reaction ^a	Dosage Modifications
Hypertension [see Warnings and Precautions (5.6)]	
Grade 3 (SBP greater than or equal to 160 mmHg or DBP greater than or equal to 100 mmHg; medical intervention indicated; more than one antihypertensive drug, or more intensive therapy than previously used indicated)	<p>Withhold LORBRENA until hypertension has recovered to Grade 1 or less (SBP less than 140 mmHg and DBP less than 90 mmHg), then resume LORBRENA at the same dose.</p> <p>If Grade 3 hypertension recurs, withhold LORBRENA until recovery to Grade 1 or less, and resume at a reduced dose.</p> <p>If adequate hypertension control cannot be achieved with optimal medical management, permanently discontinue LORBRENA.</p>
Grade 4 (life-threatening consequences, urgent intervention indicated)	<p>Withhold LORBRENA until recovery to Grade 1 or less, and resume at a reduced dose or permanently discontinue LORBRENA.</p> <p>If Grade 4 hypertension recurs, permanently discontinue LORBRENA.</p>
Hyperglycemia [see Warnings and Precautions (5.7)]	
Grade 3 ((greater than 250 mg/dL) despite optimal anti-hyperglycemic therapy <u>OR</u> Grade 4	<p>Withhold LORBRENA until hyperglycemia is adequately controlled, then resume LORBRENA at the next lower dosage.</p> <p>If adequate hyperglycemic control cannot be achieved with optimal medical management, permanently discontinue LORBRENA.</p>
Other Adverse Reactions	
Grade 1 <u>OR</u> Grade 2	Continue LORBRENA at same dose or reduced dose.
Grade 3 <u>OR</u> Grade 4	Withhold LORBRENA until symptoms resolve to less than or equal to Grade 2 or baseline. Resume LORBRENA at reduced dose.

Abbreviation: AV=atrioventricular; DBP=diastolic blood pressure; SBP=systolic blood pressure.

^a Grade based on National Cancer Institute (NCI) Common Terminology Criteria for Adverse Events (CTCAE) version 4.03.

2.4 Concomitant Use of Strong CYP3A Inducers

LORBRENA is contraindicated in patients taking strong CYP3A inducers. Discontinue strong CYP3A inducers for 3 plasma half-lives of the strong CYP3A inducer prior to initiating LORBRENA [see Contraindications (4), Warnings and Precautions (5.1), Drug Interactions (7.1), Clinical Pharmacology (12.3)].

2.5 Concomitant Use of Moderate CYP3A Inducers

Avoid concomitant use of moderate CYP3A inducers with LORBRENA. If concomitant use with moderate CYP3A inducers is unavoidable, increase the LORBRENA dose to 125 mg once daily [see Drug Interactions (7.1), Clinical Pharmacology (12.3)].

2.6 Dosage Modification for Strong CYP3A Inhibitors

Avoid concomitant use of LORBRENA with strong CYP3A inhibitors. If concomitant use with a strong CYP3A inhibitor is unavoidable, reduce the starting dose of LORBRENA from 100 mg orally once daily to 75 mg orally once daily.

In patients who have had a dose reduction to 75 mg orally once daily due to adverse reactions and who initiate a strong CYP3A inhibitor, reduce the LORBRENA dose to 50 mg orally once daily.

If concomitant use of a strong CYP3A inhibitor is discontinued, increase the LORBRENA dose (after 3 plasma half-lives of the strong CYP3A inhibitor) to the dose that was used before starting the strong inhibitor [see *Drug Interactions (7.1), Clinical Pharmacology (12.3)*].

2.7 Dosage Modification for Fluconazole

Avoid concomitant use of LORBRENA with fluconazole [see *Clinical Pharmacology (12.3)*]. If concomitant use is unavoidable, reduce the starting dose of LORBRENA from 100 mg orally once daily to 75 mg orally once daily [see *Drug Interactions (7.1), Clinical Pharmacology (12.3)*].

2.8 Dosage Modification for Severe Renal Impairment

Reduce the recommended dosage of LORBRENA for patients with severe renal impairment (creatinine clearance [CL_{cr}] 15 to < 30 mL/min, estimated by Cockcroft-Gault) from 100 mg to 75 mg orally once daily [see *Use in Specific Populations (8.7) and Clinical Pharmacology (12.3)*].

3 DOSAGE FORMS AND STRENGTHS

Tablets:

- 25 mg: 8 mm round, tan, immediate release, film-coated, debossed with “Pfizer” on one side and “25” and “LLN” on the other side
- 100 mg: 8.5 mm × 17 mm oval, lavender, immediate release, film-coated, debossed with “Pfizer” on one side and “LLN 100” on the other side

4 CONTRAINDICATIONS

LORBRENA is contraindicated in patients taking strong CYP3A inducers, due to the potential for serious hepatotoxicity [see *Warnings and Precautions (5.1)*].

5 WARNINGS AND PRECAUTIONS

5.1 Risk of Serious Hepatotoxicity with Concomitant Use of Strong CYP3A Inducers

Severe hepatotoxicity occurred in 10 of 12 healthy subjects receiving a single dose of LORBRENA with multiple daily doses of rifampin, a strong CYP3A inducer. Grade 4 alanine aminotransferase (ALT) or aspartate aminotransferase (AST) elevations occurred in 50% of subjects, Grade 3 ALT or AST elevations occurred in 33% and Grade 2 ALT or AST elevations occurred in 8%. ALT or AST elevations occurred within 3 days and returned to within normal limits after a median of 15 days (7 to 34 days); the median time to recovery was 18 days in subjects with Grade 3 or 4 ALT or AST elevations and 7 days in subjects with Grade 2 ALT or AST elevations [see *Drug Interactions (7.1)*].

LORBRENA is contraindicated in patients taking strong CYP3A inducers. Discontinue strong CYP3A inducers for 3 plasma half-lives of the strong CYP3A inducer prior to initiating LORBRENA [see *Contraindications (4), Drug Interactions (7.1)*].

5.2 Central Nervous System Effects

A broad spectrum of central nervous system (CNS) effects can occur in patients receiving LORBRENA. These include seizures, psychotic effects and changes in cognitive function, mood (including suicidal ideation), speech, mental status, and sleep. Overall, CNS effects occurred in 52% of the 476 patients who received 100 mg LORBRENA once daily in clinical trials [see *Adverse Reactions (6.1)*]. Cognitive effects occurred in 28% of the 476 patients; 2.9% of these events were severe (Grade 3 or 4). Mood effects occurred in 21% of patients; 1.7% of these events were severe. Speech effects occurred in 11% of patients; 0.6% of these events were severe. Psychotic effects occurred in 7% of patients; 0.6% of these events were severe. Mental status changes occurred in 1.3% of patients; 1.1% of these events were severe. Seizures occurred in 1.9% of patients, sometimes in conjunction with other neurologic findings. Sleep effects occurred in 12% of patients. The median time to first onset of any CNS effect was 1.4 months (1 day to 3.4 years). Overall, 2.1% of patients required permanent discontinuation of LORBRENA for a CNS effect; 10% required temporary discontinuation and 8% required dose reduction.

Withhold and resume at the same dose or at a reduced dose or permanently discontinue LORBRENA based on severity [see *Dosage and Administration (2.3)*].

5.3 Hyperlipidemia

Increases in serum cholesterol and triglycerides can occur in patients receiving LORBRENA [see *Adverse Reactions (6.1)*]. Grade 3 or 4 elevations in total cholesterol occurred in 18% and Grade 3 or 4 elevations in triglycerides occurred in 19% of the 476 patients who received 100 mg LORBRENA once daily. The median time to onset was 15 days for both hypercholesterolemia and hypertriglyceridemia. Approximately 4% and 7% of patients required temporary discontinuation and 1% and 3% of patients required dose reduction of LORBRENA for elevations in cholesterol and in triglycerides in Study B7461001 and Study B7461006, respectively. Eighty-three percent of patients required initiation of lipid-lowering medications, with a median time to onset of start of such medications of 17 days.

Initiate or increase the dose of lipid-lowering agents in patients with hyperlipidemia. Monitor serum cholesterol and triglycerides before initiating LORBRENA, 1 and 2 months after initiating LORBRENA, and periodically thereafter. Withhold and resume at the same dose for the first occurrence; resume at the same or a reduced dose of LORBRENA for recurrence based on severity [see *Dosage and Administration (2.3)*].

5.4 Atrioventricular Block

PR interval prolongation and atrioventricular (AV) block can occur in patients receiving LORBRENA [see *Adverse Reactions (6.1)*, *Clinical Pharmacology (12.2)*]. In 476 patients who received 100 mg LORBRENA once daily and who had a baseline electrocardiography (ECG), 1.9% experienced AV block and 0.2% experienced Grade 3 AV block and underwent pacemaker placement.

Monitor ECG prior to initiating LORBRENA and periodically thereafter. Withhold and resume at a reduced dose or at the same dose in patients who undergo pacemaker placement. Permanently discontinue for recurrence in patients without a pacemaker [see *Dosage and Administration (2.3)*].

5.5 Interstitial Lung Disease/Pneumonitis

Severe or life-threatening pulmonary adverse reactions consistent with interstitial lung disease (ILD)/pneumonitis can occur with LORBRENA. ILD/pneumonitis occurred in 1.9% of patients who received 100 mg LORBRENA once daily, including Grade 3 or 4 ILD/pneumonitis in 0.6% of patients. Four patients (0.8%) discontinued LORBRENA for ILD/pneumonitis.

Promptly investigate for ILD/pneumonitis in any patient who presents with worsening of respiratory symptoms indicative of ILD/pneumonitis (e.g., dyspnea, cough, and fever). Immediately withhold LORBRENA in patients with suspected ILD/pneumonitis. Permanently discontinue LORBRENA for treatment-related ILD/pneumonitis of any severity [*see Dosage and Administration (2.3)*].

5.6 Hypertension

Hypertension can occur in patients receiving LORBRENA [*see Adverse Reactions (6.1)*]. Hypertension occurred in 13% of patients who received 100 mg LORBRENA once daily, including Grade 3 or 4 in 6% of patients. The median time to onset of hypertension was 6.4 months (1 day to 2.8 years), and 2.3% of patients temporarily discontinued LORBRENA for hypertension.

Control blood pressure prior to initiation of LORBRENA. Monitor blood pressure after 2 weeks and at least monthly thereafter during treatment with LORBRENA. Withhold and resume at a reduced dose or permanently discontinue LORBRENA based on severity [*see Dosage and Administration (2.3)*].

5.7 Hyperglycemia

Hyperglycemia can occur in patients receiving LORBRENA [*see Adverse Reactions (6.1)*]. Hyperglycemia occurred in 9% of patients who received 100 mg LORBRENA, including Grade 3 or 4 in 3.2% of patients. The median time to onset of hyperglycemia was 4.8 months (1 day to 2.9 years), and 0.8% of patients temporarily discontinued LORBRENA for hyperglycemia.

Assess fasting serum glucose prior to initiation of LORBRENA and monitor periodically thereafter. Withhold and resume at a reduced dose or permanently discontinue LORBRENA based on severity [*see Dosage and Administration (2.3)*].

5.8 Embryo-Fetal Toxicity

Based on findings from animal studies and its mechanism of action, LORBRENA can cause fetal harm when administered to a pregnant woman. Administration of lorlatinib to pregnant rats and rabbits by oral gavage during the period of organogenesis resulted in malformations, increased post-implantation loss, and abortion at maternal exposures that were equal to or less than the human exposure at the recommended dose of 100 mg once daily based on area under the curve (AUC).

Advise pregnant women of the potential risk to a fetus. Advise females of reproductive potential to use an effective non-hormonal method of contraception, since LORBRENA can render hormonal contraceptives ineffective, during treatment with LORBRENA and for at least 6 months after the final dose. Advise males with female partners of reproductive potential to use effective contraception during treatment with LORBRENA and for 3 months after the final dose [*see Drug Interactions (7.2), Use in Specific Populations (8.1, 8.3), Nonclinical Toxicology (13.1)*].

6 ADVERSE REACTIONS

The following adverse reactions are described elsewhere in the labeling:

- Risk of Serious Hepatotoxicity with Concomitant Use of Strong CYP3A Inducers [*see Warnings and Precautions (5.1)*]
- Central Nervous System Effects [*see Warnings and Precautions (5.2)*]
- Hyperlipidemia [*see Warnings and Precautions (5.3)*]
- Atrioventricular Block [*see Warnings and Precautions (5.4)*]
- Interstitial Lung Disease/Pneumonitis [*see Warnings and Precautions (5.5)*]
- Hypertension [*see Warnings and Precautions (5.6)*]
- Hyperglycemia [*see Warnings and Precautions (5.7)*]

6.1 Clinical Trials Experience

Because clinical trials are conducted under widely varying conditions, adverse reaction rates observed in the clinical trials of a drug cannot be directly compared to rates in the clinical trials of another drug and may not reflect the rates observed in practice.

The pooled safety population described in the Warnings and Precautions section reflects exposure to LORBRENA in 476 patients who received 100 mg LORBRENA once daily in Study B7461001 (N=327) and Study B7461006 (N=149). Among 476 patients who received LORBRENA, 75% were exposed for 6 months or longer and 61% were exposed for greater than 1 year. In this pooled safety population, the most frequent adverse reactions in $\geq 20\%$ of 476 patients who received LORBRENA were edema (56%), peripheral neuropathy (44%), weight gain (31%), cognitive effects (28%), fatigue (27%), dyspnea (27%), arthralgia (24%), diarrhea (23%), mood effects (21%), and cough (21%). The most frequent Grade 3-4 laboratory abnormalities in $\geq 20\%$ of 476 patients who received LORBRENA were hypercholesterolemia (21%) and hypertriglyceridemia (21%).

Previously Untreated ALK-Positive Metastatic NSCLC (CROWN Study)

The safety of LORBRENA was evaluated in 149 patients with ALK-positive NSCLC in a randomized, open-label, active-controlled trial for the treatment of patients with ALK-positive, locally advanced or metastatic, NSCLC who had not received previous systemic treatment for advanced disease [*see Clinical Studies (14)*]. The median duration of exposure to LORBRENA was 16.7 months (4 days to 34.3 months) and 76% received LORBRENA for at least 12 months.

Serious adverse reactions occurred in 34% of patients treated with LORBRENA; the most frequently reported serious adverse reactions were pneumonia (4.7%), dyspnea (2.7%), respiratory failure (2.7%), cognitive effects (2.0%), and pyrexia (2.0%). Fatal adverse reactions occurred in 3.4% of patients treated with LORBRENA and included pneumonia (0.7%), respiratory failure (0.7%), cardiac failure acute (0.7%), pulmonary embolism (0.7%), and sudden death (0.7%).

Permanent discontinuation of LORBRENA due to adverse reactions occurred in 6.7% of patients. The most frequent adverse reaction that led to permanent discontinuation of LORBRENA was cognitive effects (1.3%). Adverse reactions leading to dose interruptions occurred in 49% of patients treated with LORBRENA. The most frequent adverse reactions that led to dose interruptions of LORBRENA were hypertriglyceridemia (7%), edema (5%), pneumonia (4.7%) cognitive effects (4.0%), mood effects (4.0%), and hypercholesterolemia (3.4%). Adverse reactions leading to dose reductions occurred in 21% of patients treated with LORBRENA. The most frequent adverse reactions that led to dose reductions were edema (5%), hypertriglyceridemia (4.0%), and peripheral neuropathy (3.4%).

Tables 2 and 3 summarize most frequent adverse reactions and laboratory abnormalities, respectively, in patients treated with LORBRENA in Study B7461006.

Table 2 Adverse Reactions ($\geq 10\%$ for all NCI CTCAE Grades or $\geq 2\%$ for Grades 3-4) in Patients Treated with LORBRENA in Study B7461006*

Adverse Reaction	LORBRENA N=149		Crizotinib N=142	
	All Grades (%)	Grade 3 or 4 (%)	All Grades (%)	Grade 3 or 4 (%)
Psychiatric Mood effects ^a	16	2	5	0
Nervous system Peripheral neuropathy ^b	34	2	15	0.7
Cognitive effects ^c	21	2	6	0
Headache	17	0	18	0.7
Dizziness	11	0	14	0
Sleep effects ^d	11	1.3	10	0
Respiratory Dyspnea	20	2.7	16	2.1
Cough	16	0	18	0
Respiratory failure	2.7	2	0	0
Vascular disorders Hypertension	18	10	2.1	0
Ocular Vision disorder ^e	18	0	39	0.7
Gastrointestinal Diarrhea	21	1.3	52	0.7
Nausea	15	0.7	52	2.1
Constipation	17	0	30	0.7
Vomiting	13	0.7	39	1.4
Musculoskeletal and connective tissue Arthralgia	19	0.7	11	0
Myalgia ^f	15	0.7	7	0
Back pain	15	0.7	11	0
Pain in extremity	17	0	8	0
General Edema ^g	56	4	40	1.4
Weight gain	38	17	13	2.1
Fatigue ^h	19	1.3	32	2.8
Pyrexia	17	1.3	13	1.4
Chest pain	11	1.3	14	0.7
Infections Upper respiratory tract infection ⁱ	11	0.7	7.7	1.4
Pneumonia	7.4	2	8.5	3.5
Bronchitis	6.7	2	2.1	0
Skin Rash ^j	11	0	8.5	0

* Adverse reactions were graded using NCI CTCAE version 4.03.

Abbreviations: NCI CTCAE=National Cancer Institute Common Terminology Criteria for Adverse Events;

SOC=System organ class.

-
- ^a Mood effects (including affective disorder, affect lability, agitation, anger, anxiety, bipolar I disorder, depressed mood, depression, depressive symptom, euphoric mood, intentional self-injury, irritability, mood altered, mood swings, stress).
 - ^b Peripheral neuropathy (including dysesthesia, gait disturbance, hypoesthesia, motor dysfunction, muscular weakness, neuralgia, neuropathy peripheral, paresthesia, peripheral motor neuropathy, peripheral sensory neuropathy).
 - ^c Cognitive effects (including events from SOC Nervous system disorders: amnesia, cognitive disorder, disturbance in attention, memory impairment, mental impairment; and also including events from SOC Psychiatric disorders: confusional state, delirium, disorientation).
 - ^d Sleep effects (including insomnia, nightmare, sleep disorder, somnambulism).
 - ^e Vision disorder (including diplopia, photophobia, photopsia, vision blurred, visual acuity reduced, visual impairment, vitreous floaters).
 - ^f Myalgia (including musculoskeletal pain, myalgia).
 - ^g Edema (including edema, edema peripheral, eyelid edema, face edema, generalized edema, localized edema, periorbital edema, peripheral swelling, swelling).
 - ^h Fatigue (including asthenia, fatigue).
 - ⁱ Upper respiratory tract infection (including upper respiratory infection).
 - ^j Rash (including dermatitis acneiform, maculopapular rash, rash).

Additional clinically significant adverse reactions occurring at an incidence between 1% and 10% were speech effects (6.7%) and psychotic effects (3.4%).

Table 3 Laboratory Abnormalities Worsening from Baseline in $\geq 20\%$ of Patients in Study B7461006

Laboratory Abnormality	LORBRENA N=149		Crizotinib N=142	
	All Grades (%)	Grade 3 or 4 (%)	All Grades (%)	Grade 3 or 4 (%)
Chemistry				
Hypertriglyceridemia ^{a,A}	95	22	27	0
Hypercholesterolemia ^{a,A}	91	19	12	0
Increased creatinine ^{a,A}	81	0.7	99	2.1
Increased GGT ^{a,A}	52	6	41	6
Increased AST ^{a,A}	48	2	75	3.5
Hyperglycemia ^{a,A}	48	7	27	2.1
Increased ALT ^{a,A}	44	2.7	75	4.3
Increased CPK ^{a,A}	39	2	64	5
Hypoalbuminemia ^{a,A}	36	0.7	61	6
Increased lipase ^{a,A}	28	7	34	5
Increased alkaline phosphatase ^{a,A}	23	0	50	0.7
Hyperkalemia ^{a,A}	21	1.3	27	2.1
Increased amylase ^{b,A}	20	1.4	32	1.4
Hematology				
Anemia ^{a,A}	48	2	38	2.8
Activated PTT ^{c,B}	25	0	14	0
Lymphopenia ^{a,A}	23	2.7	43	6
Thrombocytopenia ^{a,A}	23	0	7	0.7

* Grades using NCI CTCAE version 4.03.

Abbreviations: ALT=alanine aminotransferase; AST=aspartate aminotransferase; CPK=creatine phosphokinase; GGT=gamma glutamyl transferase; NCI CTCAE=National Cancer Institute Common Terminology Criteria for Adverse Events; PTT=partial thromboplastin time.

N=number of patients who had at least one on-study assessment for the parameter of interest.

^a N=149 (LORBRENA).

^A N=141 (crizotinib).

^b N=148 (LORBRENA).

^B N=135 (crizotinib).

^c N=138 (LORBRENA).

Previously Treated ALK-Positive Metastatic NSCLC

The data described below reflect exposure to LORBRENA in 295 patients with ALK-positive or ROS1-positive metastatic NSCLC who received LORBRENA 100 mg orally once daily in Study B7461001, a multi-cohort, non-comparative trial [see *Clinical Studies (14)*]. The median duration of exposure to LORBRENA was 12.5 months (1 day to 35 months) and 52% received LORBRENA for ≥ 12 months. Patient characteristics were: median age of 53 years (19 to 85 years), age ≥ 65 years (18%), female (58%), White (49%), Asian (37%), and ECOG performance status 0 or 1 (96%).

The most frequent ($\geq 20\%$) adverse reactions were edema, peripheral neuropathy, cognitive effects, dyspnea, fatigue, weight gain, arthralgia, mood effects, and diarrhea. Of the worsening laboratory values occurring in $\geq 20\%$ of patients, the most frequent were hypercholesterolemia, hypertriglyceridemia, anemia, hyperglycemia, increased AST, hypoalbuminemia, increased ALT, increased lipase, and increased alkaline phosphatase.

Serious adverse reactions occurred in 32% of the 295 patients; the most frequently reported serious adverse reactions were pneumonia (3.4%), dyspnea (2.7%), pyrexia (2%), mental status changes (1.4%), and respiratory failure (1.4%). Fatal adverse reactions occurred in 2.7% of patients and included pneumonia (0.7%), myocardial

infarction (0.7%), acute pulmonary edema (0.3%), embolism (0.3%), peripheral artery occlusion (0.3%), and respiratory distress (0.3%). Permanent discontinuation of LORBRENA for adverse reactions occurred in 8% of patients.

The most frequent adverse reactions that led to permanent discontinuation were respiratory failure (1.4%), dyspnea (0.7%), myocardial infarction (0.7%), cognitive effects (0.7%) and mood effects (0.7%).

Approximately 48% of patients required dose interruption. The most frequent adverse reactions that led to dose interruptions were edema (7%), hypertriglyceridemia (6%), peripheral neuropathy (5%), cognitive effects (4.4%), increased lipase (3.7%), hypercholesterolemia (3.4%), mood effects (3.1%), dyspnea (2.7%), pneumonia (2.7%), and hypertension (2.0%). Approximately 24% of patients required at least 1 dose reduction for adverse reactions. The most frequent adverse reactions that led to dose reductions were edema (6%), peripheral neuropathy (4.7%), cognitive effects (4.1%), and mood effects (3.1%).

Tables 4 and 5 summarize most frequent adverse reactions and laboratory abnormalities, respectively, in patients treated with LORBRENA in Study B7461001.

Table 4 Adverse Reactions Occurring in ≥10% of Patients in Study B7461001*

Adverse Reaction	LORBRENA (N=295)	
	All Grades (%)	Grade 3 or 4 (%)
Psychiatric		
Mood effects ^a	23	1.7
Nervous system		
Peripheral neuropathy ^b	47	2.7
Cognitive effects ^c	27	2
Headache	18	0.7
Dizziness	16	0.7
Speech effects ^d	12	0.3
Sleep effects ^e	10	0
Respiratory		
Dyspnea	27	5
Cough	18	0
Ocular		
Vision disorder ^f	15	0.3
Gastrointestinal		
Diarrhea	22	0.7
Nausea	18	0.7
Constipation	15	0
Vomiting	12	1
Musculoskeletal and connective tissue		
Arthralgia	23	0.7
Myalgia ^g	17	0
Back pain	13	0.7
Pain in extremity	13	0.3
General		
Edema ^h	57	3.1
Fatigue ⁱ	26	0.3
Weight gain	24	4.4
Pyrexia	12	0.7

Table 4 Adverse Reactions Occurring in ≥10% of Patients in Study B7461001*

Adverse Reaction	LORBRENA (N=295)	
	All Grades (%)	Grade 3 or 4 (%)
Infections Upper respiratory tract infection ^j	12	0
Skin Rash ^k	14	0.3

* Adverse reactions were graded using NCI CTCAE version 4.03.

Abbreviations: NCI CTCAE=National Cancer Institute Common Terminology Criteria for Adverse Events; SOC=System organ class.

^a Mood effects (including affective disorder, affect lability, aggression, agitation, anxiety, depressed mood, depression, euphoric mood, irritability, mania, mood altered, mood swings, personality change, stress, suicidal ideation).

^b Peripheral neuropathy (including burning sensation, carpal tunnel syndrome, dysesthesia, formication, gait disturbance, hypoesthesia, muscular weakness, neuralgia, neuropathy peripheral, neurotoxicity, paresthesia, peripheral sensory neuropathy, sensory disturbance).

^c Cognitive effects (including events from SOC Nervous system disorders: amnesia, cognitive disorder, dementia, disturbance in attention, memory impairment, mental impairment; and also including events from SOC Psychiatric disorders: attention deficit/hyperactivity disorder, confusional state, delirium, disorientation, reading disorder).

^d Speech effects (including aphasia, dysarthria, slow speech, speech disorder)

^e Sleep effects (including abnormal dreams, insomnia, nightmare, sleep disorder, sleep talking, somnambulism)

^f Vision disorder (including blindness, diplopia, photophobia, photopsia, vision blurred, visual acuity reduced, visual impairment, vitreous floaters).

^g Myalgia (including musculoskeletal pain, myalgia).

^h Edema (including edema, edema peripheral, eyelid edema, face edema, generalized edema, localized edema, periorbital edema, peripheral swelling, swelling).

ⁱ Fatigue (including asthenia, fatigue).

^j Upper respiratory infection (including fungal upper respiratory infection, upper respiratory infection, viral upper respiratory infection).

^k Rash (including dermatitis acneiform, maculopapular rash, pruritic rash, rash).

Additional clinically significant adverse reactions occurring at an incidence between 1% and 10% were psychotic effects (7%).

Table 5 Worsening Laboratory Values Occurring in ≥20% of Patients in Study B7461001*

Laboratory Abnormality	LORBRENA	
	All Grades (%)	Grade 3 or 4 (%)
Chemistry		
Hypercholesterolemia ^a	96	18
Hypertriglyceridemia ^a	90	18
Hyperglycemia ^b	52	5
Increased AST ^a	37	2.1
Hypoalbuminemia ^c	33	1
Increased ALT ^a	28	2.1
Increased lipase ^d	24	10
Increased alkaline phosphatase ^a	24	1
Increased amylase ^e	22	3.9
Hypophosphatemia ^a	21	4.8
Hyperkalemia ^b	21	1
Hypomagnesemia ^a	21	0
Hematology		
Anemia ^b	52	4.8
Thrombocytopenia ^b	23	0.3
Lymphopenia ^a	22	3.4

* Grades using NCI CTCAE version 4.03.

Abbreviations: ALT=alanine aminotransferase; AST=aspartate aminotransferase; NCI CTCAE=National Cancer Institute Common Terminology Criteria for Adverse Events.

N=number of patients who had at least one on-study assessment for the parameter of interest.

^a N=292.

^b N=293.

^c N=291.

^d N=290.

^e N=284.

7 DRUG INTERACTIONS

7.1 Effect of Other Drugs on LORBRENA

Strong CYP3A Inducers

Concomitant use of LORBRENA with a strong CYP3A inducer decreased lorlatinib plasma concentrations [*see Clinical Pharmacology (12.3)*], which may decrease the efficacy of LORBRENA.

Severe hepatotoxicity occurred in healthy subjects receiving LORBRENA with rifampin, a strong CYP3A inducer. In 12 healthy subjects receiving a single 100 mg dose of LORBRENA with multiple daily doses of rifampin, Grade 3 or 4 increases in ALT or AST occurred in 83% of subjects and Grade 2 increases in ALT or AST occurred in 8%. A possible mechanism for hepatotoxicity is through activation of the pregnane X receptor (PXR) by LORBRENA and rifampin, which are both PXR agonists.

LORBRENA is contraindicated in patients taking strong CYP3A inducers [*see Contraindication (4)*].

Discontinue strong CYP3A inducers for 3 plasma half-lives of the strong CYP3A inducer prior to initiating LORBRENA [*see Dosage and Administration (2.3)*].

Moderate CYP3A Inducers

Concomitant use of LORBRENA with a moderate CYP3A inducer decreased lorlatinib plasma concentrations, which may decrease the efficacy of LORBRENA [*see Clinical Pharmacology (12.3)*]. Avoid concomitant use

of moderate CYP3A inducers with LORBRENA. If concomitant use is unavoidable, increase the LORBRENA dose [see *Dosage and Administration (2.4)*].

Strong CYP3A Inhibitors

Concomitant use with a strong CYP3A inhibitor increased lorlatinib plasma concentrations [see *Clinical Pharmacology (12.3)*], which may increase the incidence and severity of adverse reactions of LORBRENA. Avoid concomitant use of LORBRENA with a strong CYP3A inhibitor. If concomitant use cannot be avoided, reduce the LORBRENA dosage [see *Dosage and Administration (2.5)*].

Fluconazole

Concomitant use of LORBRENA with fluconazole may increase lorlatinib plasma concentrations [see *Clinical Pharmacology (12.3)*], which may increase the incidence and severity of adverse reactions of LORBRENA. Avoid concomitant use of LORBRENA with fluconazole. If concomitant use cannot be avoided, reduce the LORBRENA dosage [see *Dosage and Administration (2.7)*].

7.2 Effect of LORBRENA on Other Drugs

Certain CYP3A Substrates

LORBRENA is a moderate CYP3A inducer. Concomitant use of LORBRENA decreases the concentration of CYP3A substrates [see *Clinical Pharmacology (12.3)*], which may reduce the efficacy of these substrates. Avoid concomitant use of LORBRENA with certain CYP3A substrates, for which minimal concentration changes may lead to serious therapeutic failures. If concomitant use is unavoidable, increase the CYP3A substrate dosage in accordance with approved product labeling.

Certain P-glycoprotein (P-gp) Substrates

LORBRENA is a moderate P-gp inducer. Concomitant use of LORBRENA decreases the concentration of P-gp substrates [see *Clinical Pharmacology (12.3)*], which may reduce the efficacy of these substrates. Avoid concomitant use of LORBRENA with certain P-gp substrates for which minimal concentration changes may lead to serious therapeutic failures. If concomitant use is unavoidable, increase the P-gp substrate dosage in accordance with approved product labeling.

8 USE IN SPECIFIC POPULATIONS

8.1 Pregnancy

Risk Summary

Based on findings from animal studies and its mechanism of action [see *Clinical Pharmacology (12.1)*], LORBRENA can cause embryo-fetal harm when administered to a pregnant woman. There are no available data on LORBRENA use in pregnant women. Administration of lorlatinib to pregnant rats and rabbits by oral gavage during the period of organogenesis resulted in malformations, increased post-implantation loss, and abortion at maternal exposures that were equal to or less than the human exposure at the recommended dose of 100 mg once daily based on AUC (see *Data*). Advise a pregnant woman of the potential risk to a fetus.

In the U.S. general population, the estimated background risk of major birth defects and miscarriage in clinically recognized pregnancies are 2 to 4% and 15 to 20%, respectively.

Data

Animal Data

Preliminary embryo-fetal development studies investigating the administration of lorlatinib during the period of organogenesis were conducted in rats and rabbits. In rabbits, lorlatinib administration resulted in abortion and total loss of pregnancy at doses of 15 mg/kg (approximately 3 times the human exposure at the recommended

dose of 100 mg) or greater. At a dose of 4 mg/kg (approximately 0.6 times the human exposure at the recommended dose of 100 mg) toxicities included increased post-implantation loss and malformations including rotated limbs, malformed kidneys, domed head, high arched palate, and dilation of the cerebral ventricles. In rats, administration of lorlatinib resulted in total loss of pregnancy at doses of 4 mg/kg (approximately 5 times the human exposure at the recommended dose of 100 mg) or greater. At a dose of 1 mg/kg (approximately equal to the human exposure at the recommended dose of 100 mg) there was increased post-implantation loss, decreased fetal body weight, and malformations including gastroschisis, rotated limbs, supernumerary digits, and vessel abnormalities.

8.2 Lactation

Risk Summary

There are no data on the presence of lorlatinib or its metabolites in either human or animal milk or its effects on the breastfed infant or on milk production. Because of the potential for serious adverse reactions in breastfed infants, instruct women not to breastfeed during treatment with LORBRENA and for 7 days after the final dose.

8.3 Females and Males of Reproductive Potential

Pregnancy Testing

Verify pregnancy status in females of reproductive potential prior to initiating LORBRENA [*see Use in Specific Populations (8.1)*].

Contraception

LORBRENA can cause embryo-fetal harm when administered to a pregnant woman [*see Use in Specific Populations (8.1)*].

Females

Advise female patients of reproductive potential to use effective non-hormonal contraception during treatment with LORBRENA and for at least 6 months after the final dose. Advise females of reproductive potential to use a non-hormonal method of contraception, because LORBRENA can render hormonal contraceptives ineffective [*see Drug Interactions (7.2)*].

Males

Based on genotoxicity findings, advise males with female partners of reproductive potential to use effective contraception during treatment with LORBRENA and for at least 3 months after the final dose [*see Nonclinical Toxicology (13.1)*].

Infertility

Males

Based on findings from animal studies, LORBRENA may transiently impair male fertility [*see Nonclinical Toxicology (13.1)*].

8.4 Pediatric Use

The safety and effectiveness of LORBRENA in pediatric patients have not been established.

8.5 Geriatric Use

Of the patients in Study B7461001 (N=295) and Study B7461006 (N=149) who received 100 mg LORBRENA orally once daily, 18% and 40% of patients, respectively, were aged 65 years or older. No clinically important differences in safety or efficacy were observed between patients aged 65 years or older and younger patients.

8.6 Hepatic Impairment

No dose adjustment is recommended for patients with mild hepatic impairment (total bilirubin \leq upper limit of normal [ULN] with AST $>$ ULN or total bilirubin >1 to $1.5 \times$ ULN with any AST). The recommended dose of LORBRENA has not been established for patients with moderate (total bilirubin ≥ 1.5 to $3.0 \times$ ULN with any AST) or severe (total bilirubin $> 3.0 \times$ ULN with any AST) hepatic impairment [see *Clinical Pharmacology (12.3)*].

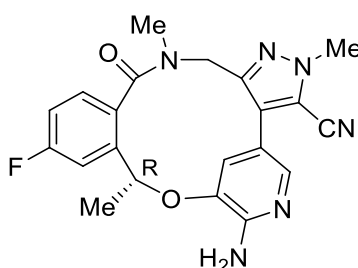
8.7 Renal Impairment

Reduce the dose when administering LORBRENA to patients with severe (CL_{cr} 15 to <30 mL/min, estimated by Cockcroft Gault) renal impairment [see *Dosage and Administration (2.6)* and *Clinical Pharmacology (12.3)*].

No dose adjustment is recommended for patients with mild or moderate renal impairment (creatinine clearance [CL_{cr}] 30 to 89 mL/min estimated by Cockcroft-Gault) [see *Clinical Pharmacology (12.3)*].

11 DESCRIPTION

LORBRENA (lorlatinib) is a kinase inhibitor for oral administration. The molecular formula is $C_{21}H_{19}FN_6O_2$ (anhydrous form) and the molecular weight is 406.41 Daltons. The chemical name is (10*R*)-7-amino-12-fluoro-2,10,16-trimethyl-15-oxo-10,15,16,17-tetrahydro-2*H*-4,8-methenopyrazolo[4,3-*h*][2,5,11]benzoxadiazacyclotetradecine-3-carbonitrile. The chemical structure is shown below:



Lorlatinib is a white to off-white powder with a pKa of 4.92. The solubility of lorlatinib in aqueous media decreases over the range pH 2.55 to pH 8.02 from 32.38 mg/mL to 0.17 mg/mL. The log of the distribution coefficient (octanol/water) at pH 9 is 2.45.

LORBRENA is supplied as tablets containing 25 mg or 100 mg of lorlatinib with the following inactive ingredients: microcrystalline cellulose, dibasic calcium phosphate anhydrous, sodium starch glycolate, and magnesium stearate. The film-coating contains hydroxypropyl methylcellulose (HPMC) 2910/hypromellose, lactose monohydrate, macrogol/polyethylene glycol (PEG) 3350, triacetin, titanium dioxide, ferrosferric oxide/black iron oxide, and iron oxide red.

12 CLINICAL PHARMACOLOGY

12.1 Mechanism of Action

Lorlatinib is a kinase inhibitor with in vitro activity against ALK and ROS1 as well as TYK1, FER, FPS, TRKA, TRKB, TRKC, FAK, FAK2, and ACK. Lorlatinib demonstrated in vitro activity against multiple mutant forms of the ALK enzyme, including some mutations detected in tumors at the time of disease progression on crizotinib and other ALK inhibitors.

In mice subcutaneously implanted with tumors harboring EML4 fusions with either ALK variant 1 or ALK mutations, including the G1202R and I1171T mutations detected in tumors at the time of disease progression on ALK inhibitors, administration of lorlatinib resulted in antitumor activity. Lorlatinib also demonstrated anti-tumor activity and prolonged survival in mice implanted intracranially with EML4-ALK-driven tumor cell lines. The overall antitumor activity of lorlatinib in in vivo models was dose-dependent and correlated with inhibition of ALK phosphorylation.

12.2 Pharmacodynamics

Exposure-response relationships for Grade 3 or 4 hypercholesterolemia and for any Grade 3 or 4 adverse reaction were observed at steady-state exposures achieved at the recommended dosage, with higher probability of the occurrence of adverse reactions with increasing lorlatinib exposure.

Cardiac Electrophysiology

In 295 patients who received LORBRENA at the recommended dosage of 100 mg once daily and had an ECG measurement in Study B7461001, the maximum mean change from baseline for PR interval was 16.4 ms (2-sided 90% upper confidence interval [CI] 19.4 ms). Among the 284 patients with PR interval <200 ms at baseline, 14% had PR interval prolongation \geq 200 ms after starting LORBRENA. The prolongation of PR interval occurred in a concentration-dependent manner. Atrioventricular block occurred in 1% of patients.

In 275 patients who received LORBRENA at the recommended dosage in the activity-estimating portion of Study B7461001, no large mean increases from baseline in the QTcF interval (i.e., >20 ms) were detected.

12.3 Pharmacokinetics

Steady-state lorlatinib maximum plasma concentration (C_{\max}) increases proportionally and AUC increased slightly less than proportionally over the dose range of 10 mg to 200 mg orally once daily (0.1 to 2 times the recommended dosage). At the recommended dosage, the mean (coefficient of variation [CV] %) C_{\max} was 577 ng/mL (42%) and the AUC_{0-24h} was 5650 ng·h/mL (39%) in patients with cancer. Lorlatinib oral clearance increased at steady-state compared to single dose, indicating autoinduction.

Absorption

The median lorlatinib T_{\max} was 1.2 hours (0.5 to 4 hours) following a single oral 100 mg dose and 2 hours (0.5 to 23 hours) following 100 mg orally once daily at steady-state.

The mean absolute bioavailability is 81% (90% CI 75.7%, 86.2%) after oral administration compared to intravenous administration.

Effect of Food

There was no clinically significant effect on lorlatinib pharmacokinetics following administration of LORBRENA with a high fat, high calorie meal (approximately 1000 calories with 150 calories from protein, 250 calories from carbohydrate, and 500 to 600 calories from fat).

Distribution

Lorlatinib was 66% bound to plasma proteins at a concentration of 2.4 μ M. The blood-to-plasma ratio was 0.99, in vitro. The mean (CV%) steady-state volume of distribution (V_{ss}) was 305 L (28%) following a single intravenous dose.

Elimination

The mean plasma half-life ($t_{1/2}$) of lorlatinib was 24 hours (40%) after a single oral 100 mg dose of LORBRENA. The mean oral clearance (CL/F) was 11 L/h (35%) following a single oral 100 mg dose and increased to 18 L/h (39%) at steady-state, suggesting autoinduction.

Metabolism

Lorlatinib is metabolized primarily by CYP3A4 and UGT1A4, with minor contribution from CYP2C8, CYP2C19, CYP3A5, and UGT1A3, in vitro.

In plasma, a benzoic acid metabolite (M8) of lorlatinib resulting from the oxidative cleavage of the amide and aromatic ether bonds of lorlatinib accounted for 21% of the circulating radioactivity. The oxidative cleavage metabolite, M8, is pharmacologically inactive.

Excretion

Following a single oral 100 mg dose of radiolabeled lorlatinib, 48% of the radioactivity was recovered in urine (<1% as unchanged) and 41% in feces (about 9% as unchanged).

Specific Populations

No clinically significant differences in lorlatinib pharmacokinetics were observed based on age (19 to 85 years), sex, race/ethnicity, body weight, mild to moderate renal impairment (CL_{cr} 30 to 89 mL/min, estimated by Cockcroft-Gault), mild hepatic impairment (total bilirubin \leq ULN and AST $>$ ULN or total bilirubin $>$ 1 to $1.5 \times$ ULN and any AST), or metabolizer phenotypes for CYP3A5 and CYP2C19. The effect of moderate to severe hepatic impairment (total bilirubin $\geq 1.5 \times$ ULN with any AST) on lorlatinib pharmacokinetics is unknown [see *Use in Specific Populations* (8.6, 8.7)].

Patients with Severe Renal Impairment

Following administration of a single oral 100 mg dose of LORBRENA, lorlatinib AUC_{inf} increased by 42% in subjects with severe renal impairment (CL_{cr} 15 to $<$ 30 mL/min, estimated by Cockcroft-Gault) compared to subjects with normal renal function ($CL_{cr} \geq 90$ mL/min, estimated by Cockcroft-Gault). The pharmacokinetics of lorlatinib have not been studied in patients with end-stage renal disease requiring hemodialysis.

Drug Interaction Studies

Clinical Studies and Model-Informed Approaches

Effect of Strong CYP3A Inducers on Lorlatinib: Rifampin (a strong CYP3A inducer that also activates PXR) 600 mg once daily for 8 days (Days 1 to 8) coadministered with a single oral 100 mg dose of LORBRENA on Day 8 reduced the mean lorlatinib AUC_{inf} by 85% and C_{max} by 76%. Grade 2 to 4 increases in ALT or AST occurred within 3 days. Grade 4 ALT or AST elevations occurred in 50%, Grade 3 ALT or AST elevations in 33%, and Grade 2 ALT or AST elevations occurred in 8% of subjects. ALT and AST returned to within normal limits within 7 to 34 days (median 15 days) [see *Drug Interactions* (7.1)].

Effect of Moderate CYP3A Inducers on Lorlatinib: Modafinil (a moderate CYP3A inducer) decreased AUC_{inf} by 23% and decreased C_{max} by 22% of a single oral 100 mg dose of LORBRENA [see *Drug Interactions* (7.1)].

Effect of Strong CYP3A Inhibitors on Lorlatinib: Itraconazole (a strong CYP3A inhibitor) increased AUC_{inf} by 42% and increased C_{max} by 24% of a single oral 100 mg dose of LORBRENA [see *Drug Interactions* (7.1)].

Effect of Fluconazole on Lorlatinib: Fluconazole is predicted to increase steady-state AUC_{tau} and C_{max} of lorlatinib by 59%, and 28%, respectively, following concomitant oral administration of 100 mg of LORBRENA once daily and 200 mg fluconazole once daily [see *Drug Interactions (7.1)*].

Effect of Moderate CYP3A Inhibitors on Lorlatinib: No clinically significant effect on steady-state lorlatinib pharmacokinetics is predicted when used concomitantly with verapamil or erythromycin.

Effect of Lorlatinib on CYP3A Substrates: LORBRENA 150 mg orally once daily for 15 days decreased AUC_{inf} by 64% and C_{max} by 50% of a single oral 2 mg dose of midazolam (a sensitive CYP3A substrate) [see *Drug Interactions (7.2)*].

Effect of Lorlatinib on CYP2B6 Substrates: LORBRENA 100 mg orally once daily for 15 days decreased AUC_{inf} by 25% and C_{max} by 27% of a single oral 100 mg dose of bupropion (a sensitive CYP2B6 substrate).

Effect of Lorlatinib on CYP2C9 Substrates: LORBRENA 100 mg orally once daily for 15 days decreased AUC_{inf} by 43% and C_{max} by 15% of a single oral 100 mg dose of tolbutamide (a sensitive CYP2C9 substrate).

Effect of Lorlatinib on UGT1A Substrates: LORBRENA 100 mg orally once daily for 15 days decreased AUC_{inf} by 45% and C_{max} by 28% of a single oral 100 mg dose of acetaminophen (a UGT1A substrate).

Effect of Lorlatinib on P-gp Substrates: LORBRENA 100 mg orally once daily for 15 days decreased AUC_{inf} by 67% and C_{max} by 63% of a single oral 60 mg dose of fexofenadine (a P-gp substrate) [see *Drug Interactions (7.2)*].

Effect of Acid-Reducing Agents on Lorlatinib: Concomitant use of a proton pump inhibitor, rabeprazole, did not have a clinically significant effect on lorlatinib pharmacokinetics.

In Vitro Studies

Effect of Lorlatinib on CYP Enzymes: Lorlatinib is a time-dependent inhibitor as well as an inducer of CYP3A and activates PXR, with the net effect in vivo being induction. Lorlatinib induces CYP2B6 and activates the human constitutive androstane receptor (CAR). Lorlatinib and the major circulating metabolite, M8, do not inhibit CYP1A2, CYP2B6, CYP2C8, CYP2C9, CYP2C19, or CYP2D6. M8 does not inhibit CYP3A.

M8 does not induce CYP1A2, CYP2B6, or CYP3A.

Effects of Lorlatinib on UDP-glucuronosyltransferase (UGT): Lorlatinib and M8 do not inhibit UGT1A1, UGT1A4, UGT1A6, UGT1A9, UGT2B7, or UGT2B15.

Effect of Lorlatinib on Transporter Systems: Lorlatinib is an inhibitor of P-gp and activates PXR (potential to induce P-gp), with the net effect in vivo being induction. Lorlatinib inhibits organic cation transporter (OCT)1, organic anion transporter (OAT)3, multidrug and toxin extrusion (MATE)1, and intestinal breast cancer resistance protein (BCRP). Lorlatinib does not inhibit organic anion transporting polypeptide (OATP)1B1, OATP1B3, OAT1, OCT2, MATE2K, or systemic BCRP. M8 does not inhibit P-gp, BCRP, OATP1B1, OATP1B3, OAT1, OAT3, OCT1, OCT2, MATE1, or MATE2K.

13 NONCLINICAL TOXICOLOGY

13.1 Carcinogenesis, Mutagenesis, Impairment of Fertility

Carcinogenicity studies have not been conducted with lorlatinib. Lorlatinib was aneugenic in an in vitro assay in human lymphoblastoid TK6 cells and positive for micronuclei formation in vivo in the bone marrow of rats. Lorlatinib was not mutagenic in an in vitro bacterial reverse mutation (Ames) assay.

Dedicated fertility studies were not conducted with lorlatinib. Findings in male reproductive organs occurred in repeat-dose toxicity studies and included lower testicular, epididymal, and prostate weights; testicular tubular degeneration/atrophy; prostatic atrophy; and/or epididymal inflammation at 15 mg/kg/day and 7 mg/kg/day in rats and dogs, respectively (approximately 8 and 2 times, respectively, the human exposure at the recommended dose of 100 mg based on AUC). The effects on male reproductive organs were reversible.

13.2 Animal Toxicology and/or Pharmacology

Distended abdomen, skin rash, and increased cholesterol and triglycerides occurred in animals. These findings were accompanied by hyperplasia and dilation of the bile ducts in the liver and acinar atrophy of the pancreas in rats at 15 mg/kg/day and in dogs at 2 mg/kg/day (approximately 8 and 0.5 times, respectively, the human exposure at the recommended dose of 100 mg based on AUC). All effects were reversible within the recovery period.

14 CLINICAL STUDIES

Previously Untreated ALK-Positive Metastatic NSCLC (CROWN Study)

The efficacy of LORBRENA for the treatment of patients with ALK-positive NSCLC who had not received prior systemic therapy for metastatic disease was established in an open-label, randomized, active-controlled, multicenter study (Study B7461006; NCT03052608). Patients were required to have an ECOG performance status of 0-2 and ALK-positive NSCLC as identified by the VENTANA ALK (D5F3) CDx assay. Neurologically stable patients with treated or untreated asymptomatic CNS metastases, including leptomeningeal metastases, were eligible. Patients were required to have finished radiation therapy, at least 2 weeks (for stereotactic or partial radiation) or 4 weeks (for whole brain irradiation) prior to randomization. Patients with severe acute or chronic psychiatric conditions, including recent (within the past year) or active suicidal ideation or behavior, were excluded.

Patients were randomized 1:1 to receive LORBRENA 100 mg orally once daily or crizotinib 250 mg orally twice daily. Randomization was stratified by ethnic origin (Asian vs. non-Asian) and the presence or absence of CNS metastases at baseline. Treatment on both arms was continued until disease progression or unacceptable toxicity. The major efficacy outcome measure was progression-free survival (PFS) as determined by Blinded Independent Central Review (BICR) according to Response Evaluation Criteria in Solid Tumors (RECIST) version 1.1 (v1.1). Additional efficacy outcome measures were overall survival (OS) and tumor assessment related data by BICR, including overall response rate (ORR), and duration of response (DOR). In patients with measurable CNS metastases at baseline, additional outcome measures were intracranial overall response rate (IC-ORR) and intracranial duration of response (IC-DOR) by BICR.

A total of 296 patients were randomized to LORBRENA (n=149) or crizotinib (n=147). The demographic characteristics of the overall study population were: median age 59 years (range: 26 to 90 years), age \geq 65 years (35%), 59% female, 49% White, 44% Asian, and 0.3% Black. The ECOG performance status at baseline was 0 or 1 in 96% of patients. The majority of patients had adenocarcinoma (95%) and never smoked (59%). CNS metastases were present in 26% (n=78) of patients: of these, 30 patients had measurable CNS lesions.

Efficacy results from Study B7461006 as assessed by BICR are summarized in Table 6 and Figure 1. Results demonstrated a significant improvement in PFS for the LORBRENA arm over the crizotinib arm. At the data cutoff point OS data was not mature.

Table 6 Efficacy Results in Study B7461006 (CROWN)

Efficacy Parameter	LORBRENA N=149	Crizotinib N=147
Progression-free survival		
Number of events, n (%)	41 (28%)	86 (59%)
Progressive disease, n (%)	32 (22%)	82 (56%)
Death, n (%)	9 (6%)	4 (3%)
Median, months (95% CI) ^a	NE (NE, NE)	9.3 (7.6, 11.1)
Hazard ratio (95% CI) ^b	0.28 (0.19, 0.41)	
p-value [*]	<0.0001	
Overall response rate		
Overall response rate (95% CI) ^c	76% (68, 83)	58% (49, 66)
Complete response	3%	0%
Partial response	73%	58%
Duration of response		
Number of responders, n	113	85
Median, months (Range)	NE (0.9, 31.3)	11 (1.1, 27.5)
Response duration \geq 6 months, n (%)	101 (89%)	53 (62%)
Response duration \geq 12 months, n (%)	79 (70%)	23 (27%)
Response duration \geq 18 months, n (%)	34 (30%)	9 (11%)

Abbreviations: CI=confidence interval; N=number of patients; NE=not estimable; PFS=progression free survival.

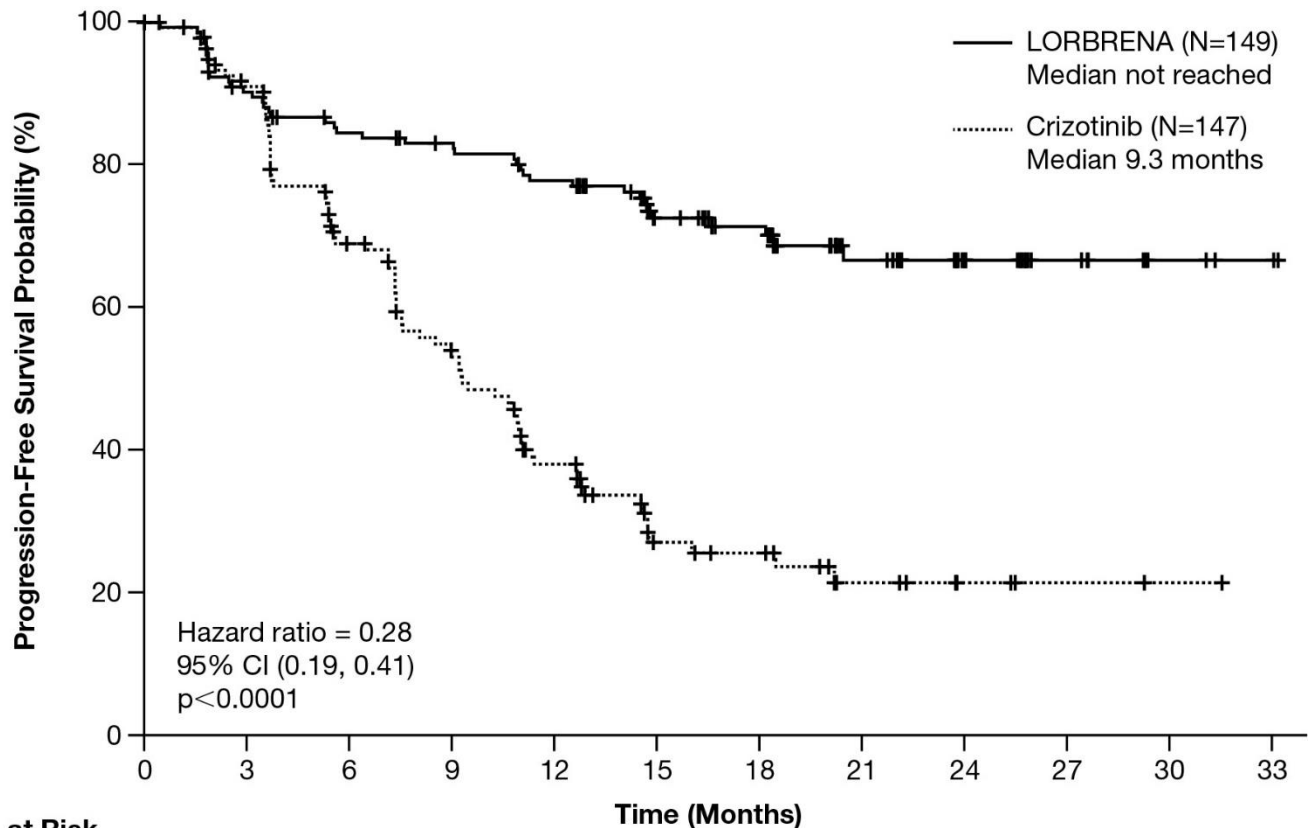
^{*} p-value based on 1-sided stratified log-rank test.

^a Based on the Brookmeyer and Crowley method.

^b Hazard ratio based on Cox proportional hazards model.

^c Using exact method based on binomial distribution.

Figure 1: Kaplan-Meier Plot of Progression-Free Survival by BICR in Study B7461006 (CROWN)



No. at Risk	0	3	6	9	12	15	18	21	24	27	30	33
LORBRENA	149	129	118	113	105	73	59	33	20	11	4	2
Crizotinib	147	120	84	62	39	19	16	8	4	2	1	0

The results of prespecified exploratory analyses of intracranial response rate in 30 patients with measurable CNS lesions at baseline as assessed by BICR are summarized in Table 7.

Table 7 Intracranial Response Rate in Patients with Measurable Intracranial Lesions in CROWN

Intracranial Tumor Response Assessment	LORBRENA N=17	Crizotinib N=13
Intracranial response rate (95% CI) ^a	82% (57, 96)	23% (5, 54)
Complete response	71%	8%
Duration of response		
Number of responders, n	14	3
Response duration ≥12 months, n (%)	11 (79%)	0

Abbreviations: CI=confidence interval; N/n=number of patients.

^a Using exact method based on binomial distribution.

ALK-Positive Metastatic NSCLC Previously Treated with an ALK Kinase Inhibitor

The efficacy of LORBRENA was demonstrated in a subgroup of patients with ALK-positive metastatic NSCLC previously treated with one or more ALK kinase inhibitors who were enrolled in a non-randomized, dose-ranging and activity-estimating, multi-cohort, multicenter study (Study B7461001; NCT01970865). Patients included in this subgroup were required to have metastatic disease with at least 1 measurable target lesion according to RECIST v1.1, ECOG performance status of 0 to 2, and documented ALK rearrangement in tumor tissue as determined by fluorescence in situ hybridization (FISH) assay or by Immunohistochemistry (IHC), and

received LORBRENA 100 mg orally once daily. Patients with asymptomatic CNS metastases, including patients with stable or decreasing steroid use within 2 weeks prior to study entry, were eligible. Patients with severe, acute, or chronic psychiatric conditions including suicidal ideation or behavior were excluded. In addition, for patients with ALK-positive metastatic NSCLC, the extent and type of prior treatment was specified for each individual cohort (see Table 8). The major efficacy outcome measures were ORR and intracranial ORR, according to RECIST v1.1, as assessed by Independent Central Review (ICR) committee. Data were pooled across all subgroups listed in Table 8. Additional efficacy outcome measures included DOR, and intracranial DOR.

A total of 215 patients were enrolled across the subgroups in Table 8. The distribution of patients by type and extent of prior therapy is provided in Table 8. The demographic characteristics across all 215 patients were: 59% female, 51% White, 34% Asian, and the median age was 53 years (29 to 85 years) with 18% of patients ≥65 years. The ECOG performance status at baseline was 0 or 1 in 96% of patients. All patients had metastatic disease and 95% had adenocarcinoma. Brain metastases as identified by ICR were present in 69% of patients; of these, 60% had received prior radiation to the brain and 60% (n=89) had measurable disease per ICR.

Table 8 Extent of Prior Therapy in the Subgroup of Patients with Previously Treated ALK-Positive Metastatic NSCLC in Study B7461001

Extent of prior therapy	Number of patients
Prior crizotinib and no prior chemotherapy ^a	29
Prior crizotinib and 1-2 lines of prior chemotherapy ^a	35
Prior ALK inhibitor (not crizotinib) with or without prior chemotherapy ^a	28
Two prior ALK inhibitors with or without prior chemotherapy ^a	75
Three prior ALK inhibitors with or without prior chemotherapy ^a	48
Total	215

Abbreviations: ALK=anaplastic lymphoma kinase; NSCLC=non-small cell lung cancer.

^a Chemotherapy administered in the metastatic setting.

Efficacy results for Study B7461001 are summarized in Tables 9 and 10.

Table 9 Efficacy Results in Study B7461001

Efficacy Parameter	Overall N=215
Overall response rate^a (95% CI)^b	48% (42, 55)
Complete response	4%
Partial response	44%
Duration of response	
Median, months ^c (95% CI)	12.5 (8.4, 23.7)

Abbreviations: CI=confidence interval; N=number of patients.

^a Per Independent Central Review.

^b Using exact method based on binomial distribution.

^c Estimated using the Kaplan-Meier method.

An assessment of intracranial ORR and the duration of response for CNS metastases in the subgroup of 89 patients in Study B7461001 with baseline measurable lesions in the CNS according to RECIST v1.1 are summarized in Table 10. Of these, 56 (63%) patients received prior brain radiation, including 42 patients (47%) who completed brain radiation treatment at least 6 months before starting treatment with LORBRENA.

Table 10 Intracranial Response Rate in Patients with Measurable Intracranial Lesions in Study B7461001

Efficacy Parameter	Intracranial N=89
Intracranial response rate^a (95% CI)^b	60% (49, 70)
Complete response	21%
Partial response	38%
Duration of response	
Median, months ^c (95% CI)	19.5 (12.4, NR)

Abbreviations: CI=confidence interval; N=number of patients; NR=not reached.

^a Per Independent Central Review.

^b Using exact method based on binomial distribution.

^c Estimated using the Kaplan-Meier method.

In exploratory analyses conducted in subgroups defined by prior therapy, the response rates to LORBRENA were:

- ORR = 39% (95% CI: 30, 48) in 119 patients who received crizotinib and at least one other ALK inhibitor, with or without prior chemotherapy
- ORR = 31% (95% CI: 9, 61) in 13 patients who received alectinib as their only ALK inhibitor, with or without prior chemotherapy
- ORR = 46% (95% CI: 19, 75) in 13 patients who received ceritinib as their only ALK inhibitor, with or without prior chemotherapy

16 HOW SUPPLIED/STORAGE AND HANDLING

Table 11 describes the available strengths and package configurations for LORBRENA:

Table 11 LORBRENA Tablets

Package Configuration	Strength (mg)	NDC	Description
30 count bottle with a child-resistant closure	25	0069-0227-01	8 mm round, tan, immediate release film-coated, debossed with “Pfizer” on one side and “25” and “LLN” on the other side
30 count bottle with a child-resistant closure	100	0069-0231-01	8.5 mm × 17 mm oval, lavender, immediate release, film-coated, debossed with “Pfizer” on one side and “LLN 100” on the other side

Store at 20°C to 25°C (68°F to 77°F); excursions permitted between 15°C to 30°C (59°F to 86°F) [see USP Controlled Room Temperature].

17 PATIENT COUNSELING INFORMATION

Advise the patient to read the FDA-approved patient labeling (Patient Information).

Risk of Serious Hepatotoxicity with Concomitant Use of Strong CYP3A Inducers

Inform patients of the potential risk of hepatotoxicity with the concomitant use of strong CYP3A inducers.

Advise patients to inform their healthcare providers of all medications they are taking, including prescription medicines, over-the-counter drugs, vitamins, and herbal products (e.g., St. John's wort) [see *Warnings and Precautions (5.1)*].

Central Nervous System (CNS) Effects

Advise patients to notify their healthcare provider if they experience new or worsening CNS symptoms [*see Warnings and Precautions (5.2)*].

Hyperlipidemia

Inform patients that serum cholesterol and triglycerides will be monitored during treatment. Advise patients that initiation or an increase in the dose of lipid-lowering agents may be required [*see Warnings and Precautions (5.3)*].

Atrioventricular (AV) Block

Inform patients of the risks of AV block. Advise patients to contact their healthcare provider immediately to report new or worsening cardiac symptoms [*see Warnings and Precautions (5.4)*].

Interstitial Lung Disease (ILD)/Pneumonitis

Inform patients of the risks of severe ILD/pneumonitis. Advise patients to contact their healthcare provider immediately to report new or worsening respiratory symptoms [*see Warnings and Precautions (5.5)*].

Hypertension

Advise patients of the risks of hypertension and to promptly report signs or symptoms of hypertension to their healthcare provider. Advise patients with hypertension that antihypertension medications may need to be initiated or adjusted during treatment with LORBRENA [*see Warnings and Precautions (5.6)*].

Hyperglycemia

Inform patients of the risks of new or worsening hyperglycemia and the need to periodically monitor glucose levels. Advise patients with newly occurring hyperglycemia during treatment with LORBRENA that antihyperglycemic medications may need to be initiated. Inform patients with diabetes mellitus or glucose intolerance that antihyperglycemic medications may need to be adjusted during treatment with LORBRENA [*see Warnings and Precautions (5.7)*].

Embryo-Fetal Toxicity

Advise females of reproductive potential of the potential risk to a fetus. Advise females to inform their healthcare provider of a known or suspected pregnancy [*see Warnings and Precautions (5.8), Use in Specific Populations (8.1)*].

Advise females of reproductive potential to use effective non-hormonal contraception during treatment with LORBRENA and for at least 6 months after the final dose [*see Use in Specific Populations (8.3)*].

Advise male patients with female partners of reproductive potential to use effective contraception during treatment with LORBRENA and for at least 3 months after the final dose [*see Use in Specific Populations (8.3), Nonclinical Toxicology (13.1)*].

Lactation

Advise women not to breastfeed during treatment with LORBRENA and for 7 days after the final dose [*see Use in Specific Populations (8.2)*].

Infertility

Advise males of reproductive potential that LORBRENA may transiently impair fertility [*see Use in Specific Populations (8.3), Nonclinical Toxicology (13.1)*].

This product's labeling may have been updated. For the most recent prescribing information, please visit www.LORBRENA.com.



LAB-1162-3.5

PATIENT INFORMATION
LORBRENA (lor-BREN-ah)
(lorlatinib)
tablets

What is the most important information I should know about LORBRENA?

LORBRENA may cause serious side effects, including:

- **Liver problems due to interactions with other medicines.** It is important to know what medicines should not be taken with LORBRENA.
- **Central nervous system (CNS) effects.** LORBRENA may cause CNS effects, including:
 - problems with thinking, such as forgetfulness or confusion
 - changes in mood, such as depression and thoughts about suicide or dying
 - psychotic effects, such as seeing or hearing things that are not real (hallucinations)
 - seizures
 - changes in speech
 - changes in sleepTell your healthcare provider if you experience new or worsening symptoms of these CNS effects during treatment with LORBRENA.
- **Increases in the cholesterol and triglycerides (lipid) levels in your blood.** Most people will have an increase in the lipid levels in their blood during treatment with LORBRENA.
 - If you have increases in the lipid levels in your blood during treatment with LORBRENA, your healthcare provider may need to start you on a medicine to lower the levels. If you are already taking a medicine to lower the lipid levels in your blood, your healthcare provider may need to increase your dose of that medicine.
 - Your healthcare provider should do blood tests to check the lipid levels in your blood before starting treatment, 1 to 2 months after starting treatment, and during treatment with LORBRENA.
- **Heart problems.** LORBRENA may cause very slow or abnormal heartbeats. Your healthcare provider should check your heart rhythm (electrocardiogram or EKG) before starting and during treatment with LORBRENA. Tell your healthcare provider right away if you feel dizzy or faint or have abnormal heartbeats. In some people, these problems are severe and your healthcare provider may need to have you stop taking LORBRENA or have a pacemaker placed.
- **Lung problems.** LORBRENA may cause severe or life-threatening swelling (inflammation) of the lungs during treatment that can lead to death. Symptoms may be similar to those from lung cancer. Tell your healthcare provider right away if you have any new or worsening symptoms of lung problems, including trouble breathing, shortness of breath, cough, or fever.
- **High blood pressure (hypertension).** Your healthcare provider should check your blood pressure before starting treatment, 2 weeks after starting treatment, and then at least every month during treatment with LORBRENA. Your healthcare provider may need to start or change your blood pressure medicine if you have high blood pressure during treatment with LORBRENA. Tell your healthcare provider right away if you get signs or symptoms of high blood pressure, including: headaches, dizziness, blurred vision, chest pain or shortness of breath.
- **High blood sugar (hyperglycemia).** LORBRENA may increase your blood sugar levels. Your healthcare provider should do blood tests to check your blood sugar levels before starting and during treatment with LORBRENA. Your healthcare provider may need to start or change your blood sugar medicine to control your blood sugar levels. Tell your healthcare provider right away if you get new or worsening signs and symptoms of high blood sugar, including:
 - feeling very thirsty
 - feeling sick to your stomach
 - needing to urinate more than usual
 - feeling weak or tired
 - feeling very hungry
 - feeling confused

If you have serious side effects during treatment with LORBRENA, your healthcare provider may change your dose, stop your treatment for a period of time, or completely stop treatment with LORBRENA.

See “What are possible side effects of LORBRENA?” for more information about side effects.

What is LORBRENA?

LORBRENA is a prescription medicine used to treat adults with non-small cell lung cancer (NSCLC):

- that is caused by an abnormal anaplastic lymphoma kinase (ALK) gene, **and**
- that has spread to other parts of your body.

Your healthcare provider will perform a test to make sure that LORBRENA is right for you.

It is not known if LORBRENA is safe and effective in children.

Do not take LORBRENA if you take certain other medicines called strong CYP3A inducers. Ask your healthcare provider for a list of these medicines if you are not sure.

Before taking LORBRENA, tell your healthcare provider about all of your medical conditions, including if you:

- have kidney problems
- have had episodes of depression or seizures
- have high levels of cholesterol or triglycerides in your blood
- have problems with your heart beat
- have lung or breathing problems
- have high blood pressure
- have diabetes or high blood sugar
- are pregnant or plan to become pregnant. LORBRENA can harm your unborn baby.
 - Your healthcare provider will do a pregnancy test before you start treatment with LORBRENA.
 - Tell your healthcare provider right away if you become pregnant or think you may be pregnant during treatment with LORBRENA.
 - **Females** who are able to become pregnant should use effective non-hormonal birth control during treatment with LORBRENA and for at least 6 months after the final dose of LORBRENA. Birth control pills (oral contraceptives) and other hormonal forms of birth control may not be effective if used during treatment with LORBRENA. Talk to your healthcare provider about birth control choices that are right for you during this time.
 - **Males** who have female partners who are able to become pregnant should use effective birth control during treatment with LORBRENA and for at least 3 months after the final dose of LORBRENA.
- are breastfeeding or plan to breastfeed. It is not known if LORBRENA passes into your breast milk. Do not breastfeed during treatment with LORBRENA and for 7 days after the final dose. Talk to your healthcare provider about the best way to feed your baby during this time.

Tell your healthcare provider about all the medicines you take, including prescription medicines, over-the-counter medicines, vitamins, and herbal supplements. LORBRENA may affect the way other medicines work and other medicines may affect the way LORBRENA works causing side effects.

Know the medicines you take. Keep a list of them to show to your healthcare provider and pharmacist when you get a new medicine.

How should I take LORBRENA?

- Take LORBRENA exactly as your healthcare provider tells you to take it. Do not change your dose or stop taking LORBRENA unless your healthcare provider tells you to.
- Swallow LORBRENA tablets whole. Do not chew, crush, or split LORBRENA tablets. Do not take LORBRENA tablets if they are broken, cracked, or not intact.
- Take LORBRENA 1 time a day, at the same time each day.
- You may take LORBRENA with or without food.
- If you miss a dose, take it as soon as you remember. However, if it is close to the time of your next dose (within 4 hours), just take your next dose at your regular time. **Do not** take 2 doses of LORBRENA at the same time to make up for the missed dose.
- If you vomit after taking a dose of LORBRENA, do not take an extra dose. Take your next dose at your regular time.

What are the possible side effects of LORBRENA?

- **See “What is the most important information I should know about LORBRENA?”**

The most common side effects of LORBRENA include:

- swelling in your arms, legs, hands and feet (edema)

- numbness and tingling feeling in your joints or arms and legs (peripheral neuropathy)
- weight gain
- problems with thinking, such as forgetfulness or confusion
- tiredness (fatigue)
- difficulty breathing
- pain in your joints
- diarrhea
- changes in mood, such as depression and irritability
- high cholesterol and triglyceride levels in the blood
- cough

LORBRENA may cause decreased fertility in males. In males, this could affect your ability to father a child. Talk to your healthcare provider if you have concerns about fertility.

These are not all of the possible side effects of LORBRENA. For more information, ask your healthcare provider or pharmacist.

Call your doctor for medical advice about side effects. You may report side effects to FDA at 1-800-FDA-1088.

How should I store LORBRENA?

- Store LORBRENA at room temperature between 68°F to 77°F (20°C to 25°C).

Keep LORBRENA and all medicines out of the reach of children.

General information about the safe and effective use of LORBRENA.

Medicines are sometimes prescribed for purposes other than those listed in a Patient Information leaflet. Do not use LORBRENA for a condition for which it was not prescribed. Do not give LORBRENA to other people, even if they have the same symptoms that you have. It may harm them. You can ask your healthcare provider or pharmacist for more information about LORBRENA that is written for health professionals.

What are the ingredients in LORBRENA?

Active ingredient: lorlatinib

Inactive ingredients: microcrystalline cellulose, dibasic calcium phosphate anhydrous, sodium starch glycolate, and magnesium stearate.

Film-coating contains: hydroxypropyl methylcellulose (HPMC) 2910/hypromellose, lactose monohydrate, macrogol/polyethylene glycol (PEG) 3350, triacetin, titanium dioxide, ferrousferic oxide/black iron oxide, and iron oxide red.

For more information, go to www.LORBRENA.com.



LAB-1163-2.4a

This Patient Information has been approved by the U.S. Food and Drug Administration.

Revised: March 2021