

## HIGHLIGHTS OF PRESCRIBING INFORMATION

These highlights do not include all the information needed to use LAMISIL Tablets safely and effectively. See full prescribing information for LAMISIL Tablets.

LAMISIL® (terbinafine hydrochloride) Tablets, 250 mg, for oral use  
Initial U.S. Approval: 1992

### -----RECENT MAJOR CHANGES-----

Dosage and Administration: Assessment Prior to Initiation (2.1)	8/2016
Contraindications (4)	8/2016
Warnings and Precautions: Hepatotoxicity (5.1)	8/2016
Warnings and Precautions: Thrombotic Microangiopathy (5.8)	1/2017

### -----INDICATIONS AND USAGE-----

LAMISIL Tablets are an allylamine antifungal indicated for the treatment of onychomycosis of the toenail or fingernail due to dermatophytes (tinea unguium). (1)

### -----DOSAGE AND ADMINISTRATION-----

- Prior to administering, evaluate patients for evidence of chronic or active liver disease. (2.1)
- Fingernail onychomycosis: One 250 mg tablet, once daily for 6 weeks. (2.2)
- Toenail onychomycosis: One 250 mg tablet, once daily for 12 weeks. (2.2)

### -----DOSAGE FORMS AND STRENGTHS-----

Tablet, 250 mg (3)

### -----CONTRAINDICATIONS-----

- History of allergic reaction to oral terbinafine because of the risk of anaphylaxis. (4)
- Chronic or active liver disease. (4)

### -----WARNINGS AND PRECAUTIONS-----

- Liver failure, sometimes leading to liver transplant or death, has occurred with the use of oral terbinafine. Obtain pretreatment serum transaminases. Prior to initiating treatment and periodically during therapy, assess liver function tests. Discontinue LAMISIL Tablets if liver injury develops. (5.1)

- Taste disturbance, including taste loss, has been reported with the use of LAMISIL Tablets. Taste disturbance can be severe, may be prolonged, or may be permanent. Discontinue LAMISIL Tablets if taste disturbance occurs. (5.2)
- Smell disturbance, including loss of smell, has been reported with the use of LAMISIL Tablets. Smell disturbance may be prolonged, or may be permanent. Discontinue LAMISIL Tablets if smell disturbance occurs. (5.3)
- Depressive symptoms have been reported with terbinafine use. Prescribers should be alert to the development of depressive symptoms. (5.4)
- Severe neutropenia has been reported. If the neutrophil count is less than or equal to 1000 cells/mm<sup>3</sup>, LAMISIL Tablets should be discontinued. (5.5)
- Stevens-Johnson syndrome, toxic epidermal necrolysis, erythema multiforme, exfoliative dermatitis, bullous dermatitis, and drug reaction with eosinophilia and systemic symptoms (DRESS) syndrome have been reported with oral terbinafine use. If signs or symptoms of drug reaction occur, treatment with LAMISIL Tablets should be discontinued. (5.6)

### -----ADVERSE REACTIONS-----

Common (greater than 2% of patients treated with LAMISIL Tablets) reported adverse events include headache, diarrhea, rash, dyspepsia, liver enzyme abnormalities, pruritus, taste disturbance, nausea, abdominal pain, and flatulence. (6.1)

To report SUSPECTED ADVERSE REACTIONS, contact Novartis Pharmaceuticals Corporation at 1-888-669-6682 or FDA at 1-800-FDA-1088 or [www.fda.gov/medwatch](http://www.fda.gov/medwatch).

### -----DRUG INTERACTIONS-----

Terbinafine is an inhibitor of CYP450 2D6 isozyme and has an effect on metabolism of desipramine. Drug interactions have also been noted with cimetidine, fluconazole, cyclosporine, rifampin, and caffeine. (7.1)

See 17 for PATIENT COUNSELING INFORMATION and Medication Guide

Revised: 01/2017

## FULL PRESCRIBING INFORMATION: CONTENTS\*

- 1 INDICATIONS AND USAGE
- 2 DOSAGE AND ADMINISTRATION
  - 2.1 Assessment Prior to Initiation
  - 2.2 Dosage
- 3 DOSAGE FORMS AND STRENGTHS
- 4 CONTRAINDICATIONS
- 5 WARNINGS AND PRECAUTIONS
  - 5.1 Hepatotoxicity
  - 5.2 Taste Disturbance Including Loss of Taste
  - 5.3 Smell Disturbance Including Loss of Smell
  - 5.4 Depressive Symptoms
  - 5.5 Hematologic Effects
  - 5.6 Serious Skin/Hypersensitivity Reactions
  - 5.7 Lupus Erythematosus
  - 5.8 Thrombotic Microangiopathy
- 6 ADVERSE REACTIONS
  - 6.1 Clinical Trials Experience
  - 6.2 Postmarketing Experience
- 7 DRUG INTERACTIONS
  - 7.1 Drug-Drug Interactions
  - 7.2 Food Interactions

## 8 USE IN SPECIFIC POPULATIONS

- 8.1 Pregnancy
- 8.3 Nursing Mothers
- 8.4 Pediatric Use
- 8.5 Geriatric Use
- 8.6 Renal Impairment
- 8.7 Hepatic Impairment

## 10 OVERDOSAGE

## 11 DESCRIPTION

## 12 CLINICAL PHARMACOLOGY

- 12.1 Mechanism of Action
- 12.2 Pharmacodynamics
- 12.3 Pharmacokinetics
- 12.4 Microbiology

## 13 NONCLINICAL TOXICOLOGY

- 13.1 Carcinogenesis, Mutagenesis, Impairment of Fertility
- 13.2 Animal Toxicology and/or Pharmacology

## 14 CLINICAL STUDIES

## 16 HOW SUPPLIED/STORAGE AND HANDLING

## 17 PATIENT COUNSELING INFORMATION

\* Sections or subsections omitted from the full prescribing information are not listed

## FULL PRESCRIBING INFORMATION

### 1 INDICATIONS AND USAGE

LAMISIL (terbinafine hydrochloride) Tablets are indicated for the treatment of onychomycosis of the toenail or fingernail due to dermatophytes (tinea unguium).

Prior to initiating treatment, appropriate nail specimens for laboratory testing [potassium hydroxide (KOH) preparation, fungal culture, or nail biopsy] should be obtained to confirm the diagnosis of onychomycosis.

### 2 DOSAGE AND ADMINISTRATION

#### 2.1 Assessment Prior to Initiation

Before administering LAMISIL Tablets, evaluate patients for evidence of chronic or active liver disease [see *Contraindications (4) and Warnings and Precautions (5.1)*].

#### 2.2 Dosage

Fingernail onychomycosis: One 250 mg tablet once daily for 6 weeks.

Toenail onychomycosis: One 250 mg tablet once daily for 12 weeks.

The optimal clinical effect is seen some months after mycological cure and cessation of treatment. This is related to the period required for outgrowth of healthy nail.

### 3 DOSAGE FORMS AND STRENGTHS

Tablet, 250 mg white to yellow-tinged white circular, biconvex, beveled tablets imprinted with “LAMISIL” in circular form on one side and code “250” on the other side.

### 4 CONTRAINDICATIONS

LAMISIL Tablets are contraindicated in patients with:

- History of allergic reaction to oral terbinafine because of the risk of anaphylaxis [see *Adverse Reactions (6.2)*]
- Chronic or active liver disease [see *Warnings and Precautions (5.1)*]

### 5 WARNINGS AND PRECAUTIONS

#### 5.1 Hepatotoxicity

LAMISIL Tablets are contraindicated for patients with chronic or active liver disease. Before prescribing LAMISIL Tablets, perform liver function tests because hepatotoxicity may occur in patients with and without preexisting liver disease. Cases of liver failure, some leading to liver transplant or death, have occurred with the use of LAMISIL Tablets in individuals with and without preexisting liver disease.

In the majority of liver cases reported in association with use of LAMISIL Tablets, the patients had serious underlying systemic conditions. The severity of hepatic events and/or their outcome may be worse in patients with active or chronic liver disease. Periodic monitoring of liver function tests is recommended. Discontinue LAMISIL Tablets if biochemical or clinical evidence of liver injury develops.

Warn patients prescribed LAMISIL Tablets and/or their caregivers to report immediately to their healthcare providers any symptoms or signs of persistent nausea, anorexia, fatigue, vomiting, right upper abdominal pain or jaundice, dark urine, or pale stools. Advise patients with these symptoms to discontinue taking oral terbinafine, and immediately evaluate the patient's liver function.

#### 5.2 Taste Disturbance Including Loss of Taste

Taste disturbance, including taste loss, has been reported with the use of LAMISIL Tablets. It can be severe enough to result in decreased food intake, weight loss, anxiety, and depressive symptoms. Taste disturbance may resolve within several weeks after discontinuation of treatment, but may be prolonged (greater than 1 year), or may be permanent. If symptoms of a taste disturbance occur, LAMISIL Tablets should be discontinued.

### 5.3 Smell Disturbance Including Loss of Smell

Smell disturbance, including loss of smell, has been reported with the use of LAMISIL Tablets. Smell disturbance may resolve after discontinuation of treatment, but may be prolonged (greater than 1 year), or may be permanent. If symptoms of a smell disturbance occur, LAMISIL Tablets should be discontinued.

### 5.4 Depressive Symptoms

Depressive symptoms have occurred during postmarketing use of LAMISIL Tablets. Prescribers should be alert to the development of depressive symptoms, and patients should be instructed to report depressive symptoms to their physician.

### 5.5 Hematologic Effects

Transient decreases in absolute lymphocyte counts (ALCs) have been observed in controlled clinical trials. In placebo-controlled trials, 8/465 subjects receiving LAMISIL Tablets (1.7%) and 3/137 subjects receiving placebo (2.2%) had decreases in ALC to below 1000/mm<sup>3</sup> on 2 or more occasions. In patients with known or suspected immunodeficiency, physicians should consider monitoring complete blood counts if treatment continues for more than 6 weeks. Cases of severe neutropenia have been reported. These were reversible upon discontinuation of LAMISIL Tablets, with or without supportive therapy. If clinical signs and symptoms suggestive of secondary infection occur, a complete blood count should be obtained. If the neutrophil count is less than or equal to 1000 cells/mm<sup>3</sup>, LAMISIL Tablets should be discontinued and supportive management started.

### 5.6 Serious Skin/Hypersensitivity Reactions

There have been postmarketing reports of serious skin/hypersensitivity reactions [e.g., Stevens-Johnson syndrome, toxic epidermal necrolysis, erythema multiforme, exfoliative dermatitis, bullous dermatitis, and drug reaction with eosinophilia and systemic symptoms (DRESS) syndrome]. Manifestations of DRESS syndrome may include cutaneous reaction (such as rash or exfoliative dermatitis), eosinophilia, and one or more organ complications such as hepatitis, pneumonitis, nephritis, myocarditis, and pericarditis. If progressive skin rash or signs/symptoms of the above drug reactions occur, treatment with LAMISIL Tablets should be discontinued.

### 5.7 Lupus Erythematosus

During postmarketing experience, precipitation and exacerbation of cutaneous and systemic lupus erythematosus have been reported in patients taking LAMISIL Tablets. LAMISIL Tablets should be discontinued in patients with clinical signs and symptoms suggestive of lupus erythematosus.

### 5.8 Thrombotic Microangiopathy

Cases of thrombotic microangiopathy (TMA), including thrombotic thrombocytopenic purpura and hemolytic uremic syndrome, some fatal, have been reported with terbinafine. Discontinue terbinafine if clinical symptoms and laboratory findings consistent with TMA occur. The findings of unexplained thrombocytopenia and anemia should prompt further evaluation and consideration of diagnosis of TMA.

## 6 ADVERSE REACTIONS

### 6.1 Clinical Trials Experience

Because clinical trials are conducted under widely varying conditions, adverse reaction rates in the clinical trials of a drug cannot be directly compared to rates in the clinical trials of another drug and may not reflect the rates observed in practice.

The most frequently reported adverse events observed in the 3 US/Canadian placebo-controlled trials are listed in the table below. The adverse events reported encompass gastrointestinal symptoms (including diarrhea, dyspepsia, and abdominal pain), liver test abnormalities, rashes, urticaria, pruritus, and taste disturbances. Changes in the ocular lens and retina have been reported following the use of LAMISIL Tablets in controlled trials. The clinical significance of these changes is unknown. In general, the adverse events were mild, transient, and did not lead to discontinuation from study participation.

	Adverse Event		Discontinuation	
	LAMISIL Tablets (%) n=465	Placebo (%) n=137	LAMISIL Tablets (%) n=465	Placebo (%) n=137
Headache	12.9	9.5	0.2	0.0

Gastrointestinal Symptoms:				
Diarrhea	5.6	2.9	0.6	0.0
Dyspepsia	4.3	2.9	0.4	0.0
Abdominal Pain	2.4	1.5	0.4	0.0
Nausea	2.6	2.9	0.2	0.0
Flatulence	2.2	2.2	0.0	0.0
Dermatological Symptoms:				
Rash	5.6	2.2	0.9	0.7
Pruritus	2.8	1.5	0.2	0.0
Urticaria	1.1	0.0	0.0	0.0
Liver Enzyme Abnormalities*	3.3	1.4	0.2	0.0
Taste Disturbance	2.8	0.7	0.2	0.0
Visual Disturbance	1.1	1.5	0.9	0.0

\*Liver enzyme abnormalities greater than or equal to 2x the upper limit of normal range.

## 6.2 Postmarketing Experience

The following adverse events have been identified during post-approval use of LAMISIL Tablets. Because these events are reported voluntarily from a population of uncertain size, it is not always possible to reliably estimate their frequency or establish a causal relationship to drug exposure.

*Blood and lymphatic system disorders:* Pancytopenia, agranulocytosis, severe neutropenia, thrombocytopenia, anemia, thrombotic microangiopathy (TMA), including thrombotic thrombocytopenic purpura and hemolytic uremic syndrome [see *Warnings and Precautions (5.5, 5.8)*]

*Immune system disorders:* Serious hypersensitivity reactions e.g., angioedema and allergic reactions (including anaphylaxis), precipitation and exacerbation of cutaneous and systemic lupus erythematosus [see *Warnings and Precautions (5.7)*], serum sickness-like reaction

*Psychiatric disorders:* Anxiety and depressive symptoms independent of taste disturbance have been reported with use of LAMISIL Tablets. In some cases, depressive symptoms have been reported to subside with discontinuance of therapy and to recur with reinstatement of therapy [see *Warnings and Precautions (5.4)*].

*Nervous system disorders:* Cases of taste disturbance, including taste loss, have been reported with the use of LAMISIL Tablets. It can be severe enough to result in decreased food intake, weight loss, anxiety, and depressive symptoms. Cases of smell disturbance, including smell loss, have been reported with the use of LAMISIL Tablets [see *Warnings and Precautions (5.2, 5.3)*]. Cases of paresthesia and hypoesthesia have been reported with the use of LAMISIL Tablets.

*Eye disorders:* Visual field defects, reduced visual acuity

*Ear and labyrinth disorders:* Hearing impairment, vertigo, tinnitus

*Vascular disorders:* Vasculitis

*Gastrointestinal disorders:* Pancreatitis, vomiting

*Hepatobiliary disorders:* Cases of liver failure some leading to liver transplant or death [see *Warnings and Precautions (5.1)*], idiosyncratic and symptomatic hepatic injury. Cases of hepatitis, cholestasis, and increased hepatic enzymes [see *Warnings and Precautions (5.1)*] have been seen with the use of LAMISIL Tablets.

*Skin and subcutaneous tissue disorders:* Serious skin reactions [e.g., Stevens-Johnson syndrome, toxic epidermal necrolysis, erythema multiforme, exfoliative dermatitis, bullous dermatitis, and drug reaction with eosinophilia and systemic symptoms (DRESS) syndrome] [see *Warnings and Precautions (5.6)*], acute generalized exanthematous pustulosis, psoriasiform eruptions or exacerbation of psoriasis, photosensitivity reactions, hair loss

*Musculoskeletal and connective tissue disorders:* Rhabdomyolysis, arthralgia, myalgia

*General disorders and administration site conditions:* Malaise, fatigue, influenza-like illness, pyrexia

*Investigations:* Altered prothrombin time (prolongation and reduction) in patients concomitantly treated with warfarin and increased blood creatine phosphokinase have been reported

## **7 DRUG INTERACTIONS**

### **7.1 Drug-Drug Interactions**

*In vivo* studies have shown that terbinafine is an inhibitor of the CYP450 2D6 isozyme. Drugs predominantly metabolized by the CYP450 2D6 isozyme include the following drug classes: tricyclic antidepressants, selective serotonin reuptake inhibitors, beta-blockers, antiarrhythmics class 1C (e.g., flecainide and propafenone) and monoamine oxidase inhibitors Type B. Coadministration of LAMISIL Tablets should be done with careful monitoring and may require a reduction in dose of the 2D6-metabolized drug. In a study to assess the effects of terbinafine on desipramine in healthy volunteers characterized as normal metabolizers, the administration of terbinafine resulted in a 2-fold increase in  $C_{max}$  and a 5-fold increase in area under the curve (AUC). In this study, these effects were shown to persist at the last observation at 4 weeks after discontinuation of LAMISIL Tablets. In studies in healthy subjects characterized as extensive metabolizers of dextromethorphan (antitussive drug and CYP2D6 probe substrate), terbinafine increases the dextromethorphan/dextrorphan metabolite ratio in urine by 16- to 97-fold on average. Thus, terbinafine may convert extensive CYP2D6 metabolizers to poor metabolizer status.

*In vitro* studies with human liver microsomes showed that terbinafine does not inhibit the metabolism of tolbutamide, ethinylestradiol, ethoxycoumarin, cyclosporine, cisapride and fluvastatin. *In vivo* drug-drug interaction studies conducted in healthy volunteer subjects showed that terbinafine does not affect the clearance of antipyrine or digoxin. Terbinafine decreases the clearance of caffeine by 19%. Terbinafine increases the clearance of cyclosporine by 15%.

The influence of terbinafine on the pharmacokinetics of fluconazole, cotrimoxazole (trimethoprim and sulfamethoxazole), zidovudine or theophylline was not considered to be clinically significant.

Coadministration of a single dose of fluconazole (100 mg) with a single dose of terbinafine resulted in a 52% and 69% increase in terbinafine  $C_{max}$  and AUC, respectively. Fluconazole is an inhibitor of CYP2C9 and CYP3A enzymes. Based on this finding, it is likely that other inhibitors of both CYP2C9 and CYP3A4 (e.g., ketoconazole, amiodarone) may also lead to a substantial increase in the systemic exposure ( $C_{max}$  and AUC) of terbinafine when concomitantly administered.

There have been spontaneous reports of increase or decrease in prothrombin times in patients concomitantly taking oral terbinafine and warfarin, however, a causal relationship between LAMISIL Tablets and these changes has not been established.

Terbinafine clearance is increased 100% by rifampin, a CYP450 enzyme inducer, and decreased 33% by cimetidine, a CYP450 enzyme inhibitor. Terbinafine clearance is unaffected by cyclosporine. There is no information available from adequate drug-drug interaction studies with the following classes of drugs: oral contraceptives, hormone replacement therapies, hypoglycemics, phenytoins, thiazide diuretics, and calcium channel blockers.

### **7.2 Food Interactions**

An evaluation of the effect of food on LAMISIL Tablets was conducted. An increase of less than 20% of the AUC of terbinafine was observed when LAMISIL Tablets were administered with food. LAMISIL Tablets can be taken with or without food.

## **8 USE IN SPECIFIC POPULATIONS**

### **8.1 Pregnancy**

Pregnancy Category B

There are no adequate and well-controlled studies in pregnant women. Because animal reproduction studies are not always predictive of human response, and because treatment of onychomycosis can be postponed until after pregnancy is completed, it is recommended that LAMISIL Tablets not be initiated during pregnancy.

Oral reproduction studies have been performed in rabbits and rats at doses up to 300 mg/kg/day [12x to 23x the maximum recommended human dose (MRHD), in rabbits and rats, respectively, based on body surface area (BSA) comparisons] and have revealed no evidence of impaired fertility or harm to the fetus due to terbinafine.

### 8.3 Nursing Mothers

After oral administration, terbinafine is present in breast milk of nursing mothers. The ratio of terbinafine in milk to plasma is 7:1. Treatment with LAMISIL Tablets is not recommended in women who are nursing.

### 8.4 Pediatric Use

The safety and efficacy of LAMISIL Tablets have not been established in pediatric patients with onychomycosis.

### 8.5 Geriatric Use

Clinical studies of LAMISIL Tablets did not include sufficient numbers of subjects aged 65 years and over to determine whether they respond differently from younger subjects. Other reported clinical experience has not identified differences in responses between the elderly and younger patients. In general, dose selection for an elderly patient should be cautious, usually starting at the low end of the dosing range, reflecting the greater frequency of decreased hepatic, renal, or cardiac function, and of concomitant disease or other drug therapy.

### 8.6 Renal Impairment

In patients with renal impairment (creatinine clearance less than or equal to 50 mL/min), the use of LAMISIL Tablets has not been adequately studied.

### 8.7 Hepatic Impairment

LAMISIL Tablets are contraindicated for patients with chronic or active liver disease [see *Contraindications (4) and Warnings and Precautions (5.1)*]. Cases of liver failure, some leading to liver transplant or death, have occurred with the use of LAMISIL Tablets in individuals with and without preexisting liver disease. The severity of hepatic events and/or their outcome may be worse in patients with active or chronic liver disease.

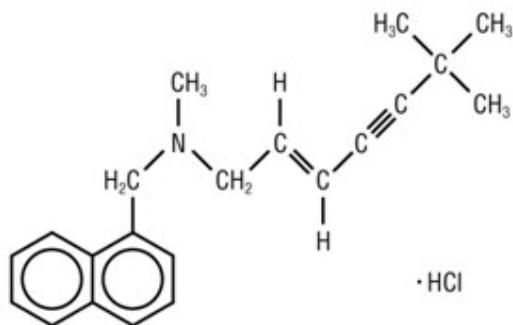
## 10 OVERDOSAGE

Clinical experience regarding overdose with oral terbinafine is limited. Doses up to 5 grams (20 times the therapeutic daily dose) have been taken without inducing serious adverse reactions. The symptoms of overdose included nausea, vomiting, abdominal pain, dizziness, rash, frequent urination, and headache.

## 11 DESCRIPTION

LAMISIL Tablets contain the synthetic allylamine antifungal compound terbinafine hydrochloride.

Chemically, terbinafine hydrochloride is (E)-N-(6,6-dimethyl-2-hepten-4-ynyl)-N-methyl-1-naphthalenemethanamine hydrochloride. The empirical formula  $C_{21}H_{26}ClN$  with a molecular weight of 327.90, and the following structural formula:



Terbinafine hydrochloride is a white to off-white fine crystalline powder. It is freely soluble in methanol and methylene chloride, soluble in ethanol, and slightly soluble in water.

#### ***Each tablet contains:***

***Active Ingredients:*** terbinafine hydrochloride (equivalent to 250 mg base).

***Inactive Ingredients:*** colloidal silicon dioxide NF, hydroxypropyl methylcellulose USP, magnesium stearate NF, microcrystalline cellulose NF, and sodium starch glycolate NF.

## 12 CLINICAL PHARMACOLOGY

### 12.1 Mechanism of Action

Terbinafine is an allylamine antifungal [see *Clinical Pharmacology (12.4)*].

### 12.2 Pharmacodynamics

The pharmacodynamics of LAMISIL Tablets is unknown.

### 12.3 Pharmacokinetics

Following oral administration, terbinafine is well absorbed (greater than 70%) and the bioavailability of LAMISIL Tablets as a result of first-pass metabolism is approximately 40%. Peak plasma concentrations of 1 mcg/mL appear within 2 hours after a single 250 mg dose; the AUC is approximately 4.56 mcg·h/mL. An increase in the AUC of terbinafine of less than 20% is observed when LAMISIL Tablets are administered with food.

In plasma, terbinafine is greater than 99% bound to plasma proteins and there are no specific binding sites. At steady-state, in comparison to a single dose, the peak concentration of terbinafine is 25% higher and plasma AUC increases by a factor of 2.5; the increase in plasma AUC is consistent with an effective half-life of ~36 hours. Terbinafine is distributed to the sebum and skin. A terminal half-life of 200-400 hours may represent the slow elimination of terbinafine from tissues such as skin and adipose. Prior to excretion, terbinafine is extensively metabolized by at least 7 CYP isoenzymes with major contributions from CYP2C9, CYP1A2, CYP3A4, CYP2C8, and CYP2C19. No metabolites have been identified that have antifungal activity similar to terbinafine. Approximately 70% of the administered dose is eliminated in the urine.

In patients with renal impairment (creatinine clearance less than or equal to 50 mL/min) or hepatic cirrhosis, the clearance of terbinafine is decreased by approximately 50% compared to normal volunteers. No effect of gender on the blood levels of terbinafine was detected in clinical trials. No clinically relevant age-dependent changes in steady-state plasma concentrations of terbinafine have been reported.

### 12.4 Microbiology

Terbinafine, an allylamine antifungal, inhibits biosynthesis of ergosterol, an essential component of fungal cell membrane, via inhibition of squalene epoxidase enzyme. This results in fungal cell death primarily due to the increased membrane permeability mediated by the accumulation of high concentrations of squalene but not due to ergosterol deficiency. Depending on the concentration of the drug and the fungal species test *in vitro*, terbinafine hydrochloride may be fungicidal. However, the clinical significance of *in vitro* data is unknown.

Terbinafine has been shown to be active against most strains of the following microorganisms both *in vitro* and in clinical infections:

*Trichophyton mentagrophytes*

*Trichophyton rubrum*

The following *in vitro* data are available, but their clinical significance is unknown. *In vitro*, terbinafine exhibits satisfactory MIC's against most strains of the following microorganisms; however, the safety and efficacy of terbinafine in treating clinical infections due to these microorganisms have not been established in adequate and well-controlled clinical trials:

*Candida albicans*

*Epidermophyton floccosum*

*Scopulariopsis brevicaulis*

## 13 NONCLINICAL TOXICOLOGY

### 13.1 Carcinogenesis, Mutagenesis, Impairment of Fertility

In a 28-month oral carcinogenicity study in rats, an increase in the incidence of liver tumors was observed in males at the highest dose tested, 69 mg/kg/day (2x the MRHD based on AUC comparisons of the parent terbinafine); however, even though dose-limiting toxicity was not achieved at the highest tested dose, higher doses were not tested.

The results of a variety of *in vitro* (mutations in *E. coli* and *S. typhimurium*, DNA repair in rat hepatocytes, mutagenicity in Chinese hamster fibroblasts, chromosome aberration, and sister chromatid exchanges in Chinese hamster lung cells),

and *in vivo* (chromosome aberration in Chinese hamsters, micronucleus test in mice) genotoxicity tests gave no evidence of a mutagenic or clastogenic potential.

Oral reproduction studies in rats at doses up to 300 mg/kg/day (approximately 12x the MRHD based on BSA comparisons) did not reveal any specific effects on fertility or other reproductive parameters. Intravaginal application of terbinafine hydrochloride at 150 mg/day in pregnant rabbits did not increase the incidence of abortions or premature deliveries nor affect fetal parameters.

### 13.2 Animal Toxicology and/or Pharmacology

A wide range of *in vivo* studies in mice, rats, dogs, and monkeys, and *in vitro* studies using rat, monkey, and human hepatocytes suggest that peroxisome proliferation in the liver is a rat-specific finding. However, other effects, including increased liver weights and APTT, occurred in dogs and monkeys at doses giving  $C_{ss}$  trough levels of the parent terbinafine 2-3x those seen in humans at the MRHD. Higher doses were not tested.

## 14 CLINICAL STUDIES

The efficacy of LAMISIL Tablets in the treatment of onychomycosis is illustrated by the response of subjects with toenail and/or fingernail infections who participated in 3 US/Canadian placebo-controlled clinical trials.

Results of the first toenail trial, as assessed at week 48 (12 weeks of treatment with 36 weeks follow-up after completion of therapy), demonstrated mycological cure, defined as simultaneous occurrence of negative KOH plus negative culture, in 70% of subjects. Fifty-nine percent (59%) of subjects experienced effective treatment (mycological cure plus 0% nail involvement or greater than 5mm of new unaffected nail growth); 38% of subjects demonstrated mycological cure plus clinical cure (0% nail involvement).

In a second toenail trial of dermatophytic onychomycosis, in which nondermatophytes were also cultured, similar efficacy against the dermatophytes was demonstrated. The pathogenic role of the nondermatophytes cultured in the presence of dermatophytic onychomycosis has not been established. The clinical significance of this association is unknown.

Results of the fingernail trial, as assessed at week 24 (6 weeks of treatment with 18 weeks follow-up after completion of therapy), demonstrated mycological cure in 79% of subjects, effective treatment in 75% of the subjects, and mycological cure plus clinical cure in 59% of the subjects.

The mean time to overall success was approximately 10 months for the first toenail trial and 4 months for the fingernail trial. In the first toenail trial, for subjects evaluated at least 6 months after achieving clinical cure and at least 1 year after completing therapy with LAMISIL Tablets, the clinical relapse rate was approximately 15%.

## 16 HOW SUPPLIED/STORAGE AND HANDLING

LAMISIL Tablets are supplied as white to yellow-tinged white circular, biconvex, beveled tablets containing 250 mg of terbinafine imprinted with "LAMISIL" in circular form on one side and code "250" on the other.

Bottles of 100 tablets NDC 0078-0179-05

Bottles of 30 tablets NDC 0078-0179-15

Store LAMISIL Tablets below 25°C (77°F); in a tight container. Protect from light.

## 17 PATIENT COUNSELING INFORMATION

Advise the patient to read the FDA-Approved Medication Guide.

Patients taking LAMISIL Tablets should receive the following information and instructions:

- Advise patients to immediately report to their physician or get emergency help if they experience any of the following symptoms: hives, mouth sores, blistering and peeling of skin, swelling of face, lips, tongue, or throat, difficulty swallowing or breathing. LAMISIL Tablets treatment should be discontinued.
- Advise patients to immediately report to their physician any symptoms of persistent nausea, anorexia, fatigue, vomiting, right upper abdominal pain, jaundice, dark urine, or pale stools. LAMISIL Tablets treatment should be discontinued.



- Advise patients to report to their physician any signs of taste disturbance, smell disturbance and/or depressive symptoms, fever, skin eruption, lymph node enlargement, erythema, scaling, loss of pigment, and unusual photosensitivity that can result in a rash. LAMISIL Tablets treatment should be discontinued.
- Advise patients to minimize exposure to natural and artificial sunlight (tanning beds or UVA/B treatment) while using LAMISIL Tablets.
- Advise patients that if they forget to take LAMISIL Tablets, to take their tablets as soon as they remember, unless it is less than 4 hours before the next dose is due.
- Advise patients to call their physician if they take too many LAMISIL Tablets.

Distributed by:

Novartis Pharmaceuticals Corporation  
East Hanover, New Jersey 07936

© Novartis

T2017-17  
January 2017

## MEDICATION GUIDE

LAMISIL® (lam-i-sil)  
(terbinafine hydrochloride) Tablets

### What is the most important information I should know about LAMISIL Tablets?

LAMISIL Tablets may cause serious side effects, including:

- **Liver problems that can lead to the need for a liver transplant or death.** This can happen in people who have liver problems and in people who have never had liver problems. Tell your doctor right away if you get any of these symptoms of liver problems:

- nausea
- poor appetite
- tiredness
- vomiting
- upper right stomach-area (abdomen) pain
- yellowing of your skin or eyes (jaundice)
- dark (tea-colored) urine
- pale or light colored stools

Your doctor should do a blood test to check you for liver problems before you start treatment with LAMISIL Tablets. Your doctor may also check you for liver problems during treatment, and tell you to stop taking LAMISIL Tablets if you develop liver problems.

### What are LAMISIL Tablets?

LAMISIL Tablets is a prescription medicine used to treat fungal infections of the fingernails and toenails (onychomycosis).

Your doctor should do tests to check you for fungal infection of your nails before you start LAMISIL Tablets.

It is not known if LAMISIL Tablets are safe and effective in children for the treatment of onychomycosis.

### Who should not take LAMISIL Tablets?

#### Do not take LAMISIL Tablets if you:

- have had a severe allergic reaction to terbinafine hydrochloride when taken by mouth.
- have had liver disease for a long time (chronic) or have active liver disease.

### What should I tell my doctor before taking LAMISIL Tablets?

#### Before taking LAMISIL Tablets, tell your doctor about all of your medical conditions, including if you:

- have or had liver problems
- have a weakened immune system (immunocompromised)
- have lupus (an autoimmune disease)
- are pregnant or plan to become pregnant. It is not known if LAMISIL Tablets will harm your unborn baby. You should not start taking LAMISIL Tablets during pregnancy.
- are breastfeeding or plan to breastfeed. LAMISIL passes into your breast milk and may harm your baby. You should not breastfeed while taking LAMISIL Tablets. Talk to your doctor about the best way to feed your baby if you take LAMISIL Tablets.

**Tell your doctor about all the medicines you take**, including prescription and over-the-counter medicines, vitamins, and herbal supplements. LAMISIL Tablets may affect the way other medicines work and other medicines may affect how LAMISIL Tablets work.

### How should I take LAMISIL Tablets?

- Take LAMISIL Tablets exactly as your doctor tells you to take it.
- LAMISIL comes as a tablet that you take by mouth.
- **LAMISIL Tablets are usually taken:**
  - **1 time each day for 6 weeks to treat fungal infections of your fingernail, or**
  - **1 time each day for 12 weeks to treat fungal infections of your toenail**
- LAMISIL Tablets can be taken with or without food.
- If you miss a dose of LAMISIL Tablets, take it as soon as you remember. If it is less than 4 hours before your next dose, skip the missed dose. Just take the next dose at your regular time.
- If you take too many LAMISIL Tablets, call your doctor. You may have the following symptoms:
  - nausea
  - stomach-area (abdomen) pain
  - frequent urination
  - rash
  - headache
  - vomiting
  - dizziness

### What should I avoid while taking LAMISIL Tablets?

Avoid sunlight. LAMISIL Tablets can make your skin sensitive to the sun and the light from sunlamps and tanning beds. You can get a severe sunburn. Use sunscreen and wear a hat and clothes that cover your skin if you have to be in sunlight. Talk to your doctor if you get sunburn.

### What are the possible side effects of LAMISIL Tablets?

LAMISIL Tablets may cause serious side effects, including:

- See “What is the most important information I should know about LAMISIL Tablets?”
- **Change in your sense of taste or loss of taste** is common with LAMISIL Tablets, but can also be severe. This may improve within several weeks after you stop taking LAMISIL Tablets, but may last for a long time or may become permanent. Tell your doctor if you develop any of the following:
  - change in your sense of taste or loss of taste
  - poor appetite
  - change in your mood or depressive symptoms. See the list of depressive symptoms below.
  - weight loss
  - anxiousness
- **Change in your sense of smell or loss of smell** may happen with LAMISIL Tablets. This may improve after you stop taking LAMISIL Tablets, but may last for a long time or may become permanent. Tell your doctor if you have a change in your sense of smell or loss of smell.
- **Depressive symptoms. Tell your doctor right away if you develop any of these signs or symptoms:**
  - feel sad or worthless
  - change in sleep pattern
  - mood changes
  - loss of energy or interest in daily activities
  - restlessness
- **Low white blood cell count.** LAMISIL Tablets may decrease your white blood cell count, especially neutrophils. You may have a higher risk of getting an infection when your white blood cell count is low.
- **Serious skin or allergic reactions, which may include problems with some of your body organs. Tell your doctor right away or get emergency medical help** if you get any of these symptoms:
  - skin rash
  - hives
  - sores in your mouth, or your skin blisters and peels
  - swelling of your face, eyes, lips, tongue or throat
  - trouble swallowing or breathing
  - fever
  - swollen lymph glandsAlso tell your doctor about any new symptoms, such as cough, chest pain, fast heartbeat, or blood in your urine.
- **New or worsening lupus.** Stop taking LAMISIL Tablets and tell your doctor if you get any of the following:
  - a skin rash that gets worse (progresses), is scaly, red, shows scarring, or loss of skin color
  - unusual sensitivity to the sun that can cause a rash
- **Blood clotting problems.** When taking LAMISIL Tablets, you may develop a blood clotting problem. Tell your doctor, if you get any unexplained bleeding or bruising.

The most common side effects of LAMISIL Tablets include:

- |            |                                 |                               |
|------------|---------------------------------|-------------------------------|
| • headache | • upset stomach                 | • nausea                      |
| • diarrhea | • abnormal liver function tests | • stomach-area (abdomen) pain |
| • rash     | • itching                       | • gas                         |

These are not all of the possible side effects of LAMISIL Tablets.

Call your doctor for medical advice about side effects. You may report side effects to FDA at 1-800-FDA-1088.

### How should I store LAMISIL Tablets?

- Store LAMISIL Tablets below 77°F (25°C).
- Keep LAMISIL Tablets in a tightly closed container and keep out of the light.

**Keep LAMISIL Tablets and all medicines out of the reach of children.**

### General information about the safe and effective use of LAMISIL Tablets.

Medicines are sometimes prescribed for purposes other than those listed in Medication Guide. Do not use LAMISIL Tablets for a condition for which it was not prescribed. Do not give LAMISIL Tablets to other people, even if they have the same symptoms that you have. It may harm them. You can ask your pharmacist or doctor for information about LAMISIL Tablets that is written for health professionals.

**What are the ingredients in LAMISIL Tablets?**

Active ingredient: terbinafine hydrochloride

Inactive ingredients: colloidal silicon dioxide, hydroxypropyl methylcellulose, magnesium stearate, microcrystalline cellulose, sodium starch glycolate.

Distributed by:

Novartis Pharmaceuticals Corporation  
East Hanover, New Jersey 07936

© Novartis

T2017-XX/T2017-XX

This Medication Guide has been approved by the U.S. Food and Drug Administration

Issued: January 2017

## HIGHLIGHTS OF PRESCRIBING INFORMATION

These highlights do not include all the information needed to use LAMISIL® Oral Granules safely and effectively. See full prescribing information for LAMISIL Oral Granules.

LAMISIL® (terbinafine hydrochloride) Oral Granules, 125 mg and 187.5 mg, for oral use  
Initial U.S. Approval: 1992

### RECENT MAJOR CHANGES

Dosage and Administration: Assessment Prior to Initiation (2.1)	8/2016
Contraindications (4)	8/2016
Warnings and Precautions: Hepatotoxicity (5.1)	8/2016
Warnings and Precautions: Thrombotic Microangiopathy (5.8)	1/2017

### INDICATIONS AND USAGE

LAMISIL Oral Granules are an allylamine antifungal indicated for the treatment of tinea capitis in patients 4 years of age and older. (1)

### DOSAGE AND ADMINISTRATION

Prior to administering, evaluate patients for evidence of chronic or active liver disease. (2.1)

Take once a day with food for 6 weeks (dose based on body weight). The entire contents of each packet of granules should be sprinkled on a spoonful of non-acidic food (for example, pudding or mashed potatoes) and swallowed in its entirety. (2.2)

Table 1: Dosage by Body Weight

<25 kg	125 mg/day
25–35 kg	187.5 mg/day
>35 kg	250 mg/day

### DOSAGE FORMS AND STRENGTHS

Oral Granules, 125 mg or 187.5 mg (terbinafine base equivalent) per packet. (3)

### CONTRAINDICATIONS

- History of allergic reaction to oral terbinafine because of the risk of anaphylaxis. (4)
- Chronic or active liver disease. (4)

### WARNINGS AND PRECAUTIONS

- Liver failure, sometimes leading to death or liver transplant, has occurred with the use of oral terbinafine. Prior to initiating treatment and

periodically during therapy, assess liver function tests. Discontinue LAMISIL Oral Granules if liver injury develops. (5.1)

- Taste disturbance, including taste loss, has been reported with oral terbinafine use. Taste disturbance can be severe, may be prolonged, or may be permanent. Discontinue LAMISIL Oral Granules if taste disturbance occurs. (5.2)
- Smell disturbance, including loss of smell, has been reported with the use of oral terbinafine. Smell disturbance may be prolonged or may be permanent. Discontinue LAMISIL Oral Granules if smell disturbance occurs. (5.3)
- Depressive symptoms have been reported with oral terbinafine use. Prescribers should be alert to the development of depressive symptoms. (5.4)
- Severe neutropenia has been reported. If the neutrophil count is less than or equal to 1000 cells/mm<sup>3</sup>, LAMISIL Oral Granules should be discontinued. (5.5)
- Stevens-Johnson syndrome, toxic epidermal necrolysis, erythema multiforme, exfoliative dermatitis, bullous dermatitis, and drug reaction with eosinophilia and systemic symptoms (DRESS) syndrome have been reported with oral terbinafine use. If signs or symptoms of drug reaction occur, discontinue LAMISIL Oral Granules. (5.6)

### ADVERSE REACTIONS

Common (greater than 3% in patients treated with LAMISIL Oral Granules) reported adverse events include: nasopharyngitis, headache, pyrexia, cough, vomiting, upper respiratory tract infection, nausea, upper abdominal pain, and diarrhea. (6.1)

To report SUSPECTED ADVERSE REACTIONS, contact Novartis Pharmaceuticals Corporation at 1-888-669-6682 or FDA at 1-800-FDA-1088 or [www.fda.gov/medwatch](http://www.fda.gov/medwatch).

### DRUG INTERACTIONS

Terbinafine is an inhibitor of CYP450 2D6 isozyme and has an effect on metabolism of desipramine. Drug interactions have also been noted with cimetidine, fluconazole, cyclosporine, rifampin, and caffeine. (7.1)

See 17 for PATIENT COUNSELING INFORMATION and Medication Guide

Revised: 01/2017

## FULL PRESCRIBING INFORMATION: CONTENTS\*

- INDICATIONS AND USAGE
- DOSAGE AND ADMINISTRATION
  - Assessment Prior to Initiation
  - Dosage
- DOSAGE FORMS AND STRENGTHS
- CONTRAINDICATIONS
- WARNINGS AND PRECAUTIONS
  - Hepatotoxicity
  - Taste Disturbance Including Loss of Taste
  - Smell Disturbance Including Loss of Smell
  - Depressive Symptoms
  - Hematologic Effects
  - Serious Skin/Hypersensitivity Reactions
  - Lupus Erythematosus
  - Thrombotic Microangiopathy
- ADVERSE REACTIONS
  - Clinical Trials Experience
  - Postmarketing Experience
- DRUG INTERACTIONS
  - Drug-Drug Interactions
  - Food Interactions

## 8 USE IN SPECIFIC POPULATIONS

- Pregnancy
- Nursing Mothers
- Pediatric Use
- Geriatric Use
- Renal Impairment
- Hepatic Impairment

## 10 OVERDOSAGE

## 11 DESCRIPTION

## 12 CLINICAL PHARMACOLOGY

- Mechanism of Action
- Pharmacodynamics
- Pharmacokinetics
- Microbiology

## 13 NONCLINICAL TOXICOLOGY

- Carcinogenesis, Mutagenesis, Impairment of Fertility
- Animal Toxicology and/or Pharmacology

## 14 CLINICAL STUDIES

## 16 HOW SUPPLIED/STORAGE AND HANDLING

## 17 PATIENT COUNSELING INFORMATION

\* Sections or subsections omitted from the full prescribing information are not listed

## FULL PRESCRIBING INFORMATION

### 1 INDICATIONS AND USAGE

LAMISIL (terbinafine hydrochloride) Oral Granules are indicated for the treatment of tinea capitis in patients 4 years of age and older.

### 2 DOSAGE AND ADMINISTRATION

#### 2.1 Assessment Prior to Initiation

Before administering LAMISIL Oral Granules, evaluate patients for evidence of chronic or active liver disease [*see Contraindications (4) and Warnings and Precautions (5.1)*].

#### 2.2 Dosage

Take LAMISIL (terbinafine hydrochloride) Oral Granules once a day for 6 weeks based upon body weight (see Table 1). Sprinkle the contents of each packet on a spoonful of pudding or other soft, nonacidic food such as mashed potatoes and swallow the entire spoonful (without chewing); do not use applesauce or fruit-based foods. Take with food. If 2 packets (250 mg) are required with each dose, either the content of both packets may be sprinkled on 1 spoonful, or the contents of both packets may be sprinkled on 2 spoonfuls of nonacidic food as directed above.

**Table 1: Dosage by Body Weight**

<25 kg	125 mg/day
25–35 kg	187.5 mg/day
>35 kg	250 mg/day

### 3 DOSAGE FORMS AND STRENGTHS

Oral Granules, 125 mg or 187.5 mg (terbinafine base equivalent) per packet. The film-coated granules are off-white to yellowish, round, biconvex, each having a diameter of approximately 2.1 mm.

### 4 CONTRAINDICATIONS

LAMISIL (terbinafine hydrochloride) Oral Granules are contraindicated in patients with:

- History of allergic reaction to oral terbinafine because of the risk of anaphylaxis [*see Adverse Reactions (6.2)*]
- Chronic or active liver disease [*see Warnings and Precautions (5.1)*]

### 5 WARNINGS AND PRECAUTIONS

#### 5.1 Hepatotoxicity

LAMISIL Oral Granules are contraindicated for patients with chronic or active liver disease. Before prescribing LAMISIL Oral Granules, perform liver function tests because hepatotoxicity may occur in patients with and without preexisting liver disease. Cases of liver failure, some leading to liver transplant or death, have occurred with the use of oral terbinafine during postmarketing experience in individuals with and without preexisting liver disease. In the majority of liver cases reported in association with oral terbinafine use, the patients had serious underlying systemic conditions. The severity of hepatic events and/or their outcome may be worse in patients with active or chronic liver disease. Periodic monitoring of liver function tests is recommended. Discontinue LAMISIL Oral Granules if biochemical or clinical evidence of liver injury develops.

Warn patients prescribed LAMISIL Oral Granules and/or their caregivers to report immediately to their healthcare providers any symptoms or signs of persistent nausea, anorexia, fatigue, vomiting, right upper abdominal pain or jaundice, dark urine, or pale stools. Advise patients with these symptoms to discontinue LAMISIL Oral Granules, and immediately evaluate the patient's liver function.

#### 5.2 Taste Disturbance Including Loss of Taste

Taste disturbance, including taste loss, has been reported with the use of oral terbinafine. It can be severe enough to result in decreased food intake, weight loss, anxiety, and depressive symptoms. Taste disturbance may resolve within several

weeks after discontinuation of treatment, but may be prolonged (greater than 1 year), or may be permanent. If symptoms of a taste disturbance occur, LAMISIL Oral Granules should be discontinued.

### **5.3 Smell Disturbance Including Loss of Smell**

Smell disturbance, including loss of smell, has been reported with the use of oral terbinafine. Smell disturbance may resolve after discontinuation of treatment, but may be prolonged (greater than one year), or may be permanent. If symptoms of a smell disturbance occur, LAMISIL Oral Granules should be discontinued.

### **5.4 Depressive Symptoms**

Depressive symptoms have occurred during postmarketing use of oral terbinafine. Prescribers should be alert to the development of depressive symptoms, and patients should be instructed to report depressive symptoms to their physician.

### **5.5 Hematologic Effects**

Transient decreases in absolute lymphocyte counts (ALCs) have been observed in controlled clinical trials. In placebo-controlled trials, 8/465 subjects receiving LAMISIL Tablets (1.7%) and 3/137 subjects receiving placebo (2.2%) had decreases in ALC to below 1000/mm<sup>3</sup> on 2 or more occasions. In patients with known or suspected immunodeficiency, physicians should consider monitoring complete blood counts if treatment continues for more than 6 weeks. Cases of severe neutropenia have been reported. These were reversible upon discontinuation of oral terbinafine, with or without supportive therapy. If clinical signs and symptoms suggestive of secondary infection occur, a complete blood count should be obtained. If the neutrophil count is less than or equal to 1000 cells/mm<sup>3</sup>, LAMISIL Oral Granules should be discontinued and supportive management started.

### **5.6 Serious Skin/Hypersensitivity Reactions**

There have been postmarketing reports of serious skin/hypersensitivity reactions [e.g., Stevens-Johnson syndrome, toxic epidermal necrolysis, erythema multiforme, exfoliative dermatitis, bullous dermatitis, and drug reaction with eosinophilia and systemic symptoms (DRESS) syndrome] with oral terbinafine. Manifestations of DRESS syndrome may include cutaneous reaction (such as rash or exfoliative dermatitis), eosinophilia, and one or more organ complications such as hepatitis, pneumonitis, nephritis, myocarditis, and pericarditis. If progressive skin rash or signs/symptoms of the above drug reactions occur, treatment with LAMISIL Oral Granules should be discontinued.

### **5.7 Lupus Erythematosus**

During postmarketing experience, precipitation and exacerbation of cutaneous and systemic lupus erythematosus have been reported in patients taking oral terbinafine. Therapy should be discontinued in patients with clinical signs and symptoms suggestive of lupus erythematosus.

### **5.8 Thrombotic Microangiopathy**

Cases of thrombotic microangiopathy (TMA), including thrombotic thrombocytopenic purpura and hemolytic uremic syndrome, some fatal, have been reported with terbinafine. Discontinue terbinafine if clinical symptoms and laboratory findings consistent with TMA occur. The findings of unexplained thrombocytopenia and anemia should prompt further evaluation and consideration of diagnosis of TMA.

## **6 ADVERSE REACTIONS**

### **6.1 Clinical Trials Experience**

Because clinical trials are conducted under widely varying conditions, adverse reaction rates in the clinical trials of a drug cannot be directly compared to rates in the clinical trials of another drug and may not reflect the rates observed in practice.

#### **LAMISIL (terbinafine hydrochloride) Oral Granules**

The data described below reflect exposure to terbinafine including 1042 subjects exposed for a median of 42 days. LAMISIL Oral Granules was studied in 2 active-controlled trials (n=1042). The population was children aged 4 to 12 years old, 64% male and 36% female, 21% Caucasian, 47% Black, and 32% Other. Baseline disease (dermatophyte) characteristics of subjects included 49% having *T. tonsurans*, 15% *T. violaceum*, 15% *M. canis*, 2% *M. audouinii*, and 1% others. Subjects received once daily, for 6 weeks, oral doses of LAMISIL Oral Granules based on body weight: less than 25 kg 125 mg/day, 25-35 kg 187.5 mg/day, and greater than 35 kg 250 mg/day.

Adverse events reported in the 2 trials are listed in the table below.

#### **Table 2: Adverse Events (Greater Than or Equal to 1%) in the Tinea Capitis Trials**

	LAMISIL Oral Granules (%) N=1042	Griseofulvin Oral Suspension (%) N=507
Nasopharyngitis	10	11
Headache	7	8
Pyrexia	7	6
Cough	6	5
Vomiting	5	5
Upper respiratory tract infection	5	5
Upper abdominal pain	4	4
Diarrhea	3	4
Influenza	2	1
Abdominal pain	2	1
Pharyngolaryngeal pain	2	2
Nausea	2	2
Rash	2	2
Rhinorrhea	2	0
Nasal congestion	2	1
Pruritus	1	1
Toothache	1	1

In the pooled pivotal trials, 2% (17/1042) of subjects in the terbinafine group and 2% (6/507) in the griseofulvin group experienced discontinuation of study drug due to adverse events. The most common categories of adverse events causing discontinuation in those exposed to terbinafine included gastrointestinal disorders, skin and subcutaneous disorders, and infections and infestations.

No ophthalmologic safety signal was identified in the pooled pivotal trials. Ophthalmologic assessments included dilated funduscopy to assess for refractile bodies in the retina, visual acuity assessment, and color vision testing. Of the 940 subjects in the terbinafine group and 471 subjects in the griseofulvin group who completed dilated funduscopy at posttreatment visits, none of the subjects were found to have refractile bodies of the retina at baseline or end of treatment. For visual acuity, 1% (11/837) of subjects treated with terbinafine and 2% (7/426) of subjects treated with griseofulvin showed a doubling of visual angle after 6 weeks of treatment, while 2% (15/837) treated with terbinafine and 3% (12/426) treated with griseofulvin showed a halving of the visual angle after 6 weeks of treatment. Of subjects who completed yellow-blue color vision assessment for acquired defects, 5% (13/262) of subjects treated with terbinafine and 6% (8/129) of subjects treated with griseofulvin had color confusion on more than 1 symbol at week 6 than at baseline, while 13% (33/262) of subjects treated with terbinafine and 13% (17/129) of subjects treated with griseofulvin identified more symbols correctly at week 6 than at baseline.

### **LAMISIL (terbinafine hydrochloride) Tablets**

Adverse events reported in 3 US/Canadian placebo-controlled trials included diarrhea (6%), rashes (6%), dyspepsia (4%), nausea (3%), liver abnormalities (3%), pruritus (3%), taste disturbances (3%), abdominal pain (2%), and urticaria (1%).

Changes in the ocular lens and retina have been reported following the use of LAMISIL Tablets in clinical trials in adult subjects with onychomycosis. The clinical significance of these changes is unknown.

### **6.2 Postmarketing Experience**

The following adverse events have been identified during post-approval use of oral terbinafine. Because these events are reported voluntarily from a population of uncertain size, it is not always possible to reliably estimate their frequency or establish a causal relationship to drug exposure.

*Blood and lymphatic system disorders:* Pancytopenia, agranulocytosis, severe neutropenia, thrombocytopenia, anemia, thrombotic microangiopathy (TMA), including thrombotic thrombocytopenic purpura and hemolytic uremic syndrome [see *Warnings and Precautions* (5.5, 5.8)]



*Immune system disorders:* Serious hypersensitivity reactions e.g., angioedema and allergic reactions (including anaphylaxis), precipitation and exacerbation of cutaneous and systemic lupus erythematosus [see *Warnings and Precautions* (5.7)], serum sickness-like reaction

*Psychiatric disorders:* Anxiety and depressive symptoms independent of taste disturbance have been reported with oral terbinafine use. In some cases, depressive symptoms have been reported to subside with discontinuance of therapy and to recur with reinstatement of therapy [see *Warnings and Precautions* (5.4)].

*Nervous system disorders:* Cases of taste disturbance, including taste loss, have been reported with the use of oral terbinafine. It can be severe enough to result in decreased food intake, weight loss, anxiety, and depressive symptoms. Cases of smell disturbance, including smell loss, have been reported with the use of oral terbinafine [see *Warnings and Precautions* (5.2, 5.3)]. Cases of paresthesia and hypoesthesia have been reported with the use of oral terbinafine.

*Eye disorders:* Visual field defects, reduced visual acuity

*Ear and labyrinth disorders:* Hearing impairment, vertigo, tinnitus

*Vascular disorders:* Vasculitis

*Gastrointestinal disorders:* Pancreatitis, vomiting

*Hepatobiliary disorders:* Cases of liver failure some leading to liver transplant or death [see *Warnings and Precautions* (5.1)], idiosyncratic and symptomatic hepatic injury. Cases of hepatitis, cholestasis, and increased hepatic enzymes [see *Warnings and Precautions* (5.1)] have been seen with the use of oral terbinafine.

*Skin and subcutaneous tissue disorders:* Serious skin reactions [e.g., Stevens-Johnson syndrome, toxic epidermal necrolysis, erythema multiforme, exfoliative dermatitis, bullous dermatitis, and drug reaction with eosinophilia and systemic symptoms (DRESS) syndrome] [see *Warnings and Precautions* (5.6)], acute generalized exanthematous pustulosis, psoriasiform eruptions or exacerbation of psoriasis, photosensitivity reactions, hair loss

*Musculoskeletal and connective tissue disorders:* Rhabdomyolysis, arthralgia, myalgia

*General disorders and administration site conditions:* Malaise, fatigue, influenza-like illness, pyrexia

*Investigations:* Altered prothrombin time (prolongation and reduction) in patients concomitantly treated with warfarin and increased blood creatine phosphokinase have been reported

## **7 DRUG INTERACTIONS**

### **7.1 Drug-Drug Interactions**

*In vivo* studies have shown that terbinafine is an inhibitor of the CYP450 2D6 isozyme. Drugs predominantly metabolized by the CYP450 2D6 isozyme include the following drug classes: tricyclic antidepressants, selective serotonin reuptake inhibitors, beta-blockers, antiarrhythmics class 1C (e.g., flecainide and propafenone) and monoamine oxidase inhibitors Type B. Coadministration of Lamisil (terbinafine hydrochloride) Oral Granules should be done with careful monitoring and may require a reduction in dose of the 2D6-metabolized drug. In a study to assess the effects of terbinafine on desipramine in healthy volunteers characterized as normal metabolizers, the administration of terbinafine resulted in a 2-fold increase in  $C_{max}$  and a 5-fold increase in area under the curve (AUC). In this study, these effects were shown to persist at the last observation at 4 weeks after discontinuation of LAMISIL. In studies in healthy subjects characterized as extensive metabolizers of dextromethorphan (antitussive drug and CYP2D6 probe substrate), terbinafine increases the dextromethorphan/dextrophan metabolite ratio in urine by 16- to 97-fold, on average. Thus, terbinafine may convert extensive CYP2D6 metabolizers to poor metabolizer status.

*In vitro* studies with human liver microsomes showed that terbinafine does not inhibit the metabolism of tolbutamide, ethinylestradiol, ethoxycoumarin, cyclosporine, cisapride and fluvastatin. *In vivo* drug-drug interaction studies conducted in healthy volunteer subjects showed that terbinafine does not affect the clearance of antipyrine or digoxin. Terbinafine decreases the clearance of caffeine by 19%. Terbinafine increases the clearance of cyclosporine by 15%.

The influence of terbinafine on the pharmacokinetics of fluconazole, cotrimoxazole (trimethoprim and sulfamethoxazole), zidovudine or theophylline was not considered to be clinically significant.

Coadministration of a single dose of fluconazole (100 mg) with a single dose of terbinafine resulted in a 52% and 69% increase in terbinafine  $C_{max}$  and AUC, respectively. Fluconazole is an inhibitor of CYP2C9 and CYP3A enzymes. Based

on this finding, it is likely that other inhibitors of both CYP2C9 and CYP3A4 (e.g., ketoconazole, amiodarone) may also lead to a substantial increase in the systemic exposure ( $C_{max}$  and AUC) of terbinafine when concomitantly administered.

There have been spontaneous reports of increase or decrease in prothrombin times in patients concomitantly taking oral terbinafine and warfarin, however, a causal relationship between terbinafine and these changes has not been established.

Terbinafine clearance is increased 100% by rifampin, a CYP450 enzyme inducer, and decreased 33% by cimetidine, a CYP450 enzyme inhibitor. Terbinafine clearance is unaffected by cyclosporine. There is no information available from adequate drug-drug interaction studies with the following classes of drugs: oral contraceptives, hormone replacement therapies, hypoglycemics, phenytoins, thiazide diuretics, and calcium channel blockers.

## **7.2 Food Interactions**

An evaluation of the effect of food on LAMISIL (terbinafine hydrochloride) Oral Granules was not conducted. However, in the clinical trials, LAMISIL (terbinafine hydrochloride) Oral Granules was administered with food [*see Dosage and Administration (2)*].

## **8 USE IN SPECIFIC POPULATIONS**

### **8.1 Pregnancy**

Pregnancy Category B

There are no adequate and well-controlled studies in pregnant women. Because animal reproduction studies are not always predictive of human response, and because treatment of tinea capitis can be postponed until after pregnancy is completed, it is recommended that LAMISIL (terbinafine hydrochloride) Oral Granules not be initiated during pregnancy.

Oral reproduction studies have been performed in rabbits and rats at doses up to 300 mg/kg/day [12x to 23x the Maximum Recommended Human Dose (MRHD), in rabbits and rats, respectively, based on body surface area (BSA) comparisons] and have revealed no evidence of impaired fertility or harm to the fetus due to terbinafine.

### **8.3 Nursing Mothers**

After oral administration, terbinafine is present in breast milk of nursing mothers. The ratio of terbinafine in milk to plasma is 7:1. Treatment with LAMISIL Oral Granules is not recommended in women who are nursing.

### **8.4 Pediatric Use**

LAMISIL Oral Granules was studied in 2 randomized, active-controlled trials in which 1021 subjects, 4 to 12 years old, having a clinical diagnosis of tinea capitis confirmed by potassium hydroxide (KOH) microscopy were treated with LAMISIL Oral Granules at the labeled dose for up to 6 weeks. The most common adverse events were nasopharyngitis, headache, pyrexia, cough, vomiting, and upper respiratory tract infection [*see Adverse Reactions (6.1)*].

### **8.5 Geriatric Use**

LAMISIL Oral Granules has not been studied in geriatric patients.

### **8.6 Renal Impairment**

In patients with renal impairment (creatinine clearance less than or equal to 50 mL/min) the use of LAMISIL Oral Granules has not been adequately studied.

### **8.7 Hepatic Impairment**

LAMISIL Oral Granules are contraindicated for patients with chronic or active liver disease [*see Contraindications (4) and Warnings and Precautions (5.1)*]. Cases of liver failure, some leading to liver transplant or death, have occurred with the use of oral terbinafine during postmarketing experience in individuals with and without preexisting liver disease. The severity of hepatic events and/or their outcome may be worse in patients with active or chronic liver disease.

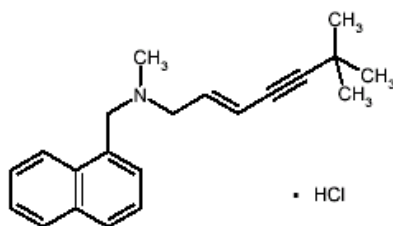
## **10 OVERDOSAGE**

Clinical experience regarding overdose with oral terbinafine is limited. Doses up to 5 grams in adults (20 times the therapeutic daily adult dose) have been reported without inducing serious adverse reactions. The symptoms of overdose included nausea, vomiting, abdominal pain, dizziness, rash, frequent urination, and headache.

## 11 DESCRIPTION

LAMISIL (terbinafine hydrochloride) Oral Granules 125 mg and 187.5 mg contain the synthetic allylamine antifungal compound, terbinafine hydrochloride.

Chemically, terbinafine hydrochloride is (E)-N-(6,6-dimethyl-2-hepten-4-ynyl)-N-methyl-1-naphthalenemethanamine hydrochloride. It has the empirical formula  $C_{21}H_{26}ClN$  with a molecular weight of 327.90, and the following structural formula:



Terbinafine hydrochloride is a white to off-white fine crystalline powder. It is freely soluble in methanol and methylene chloride, soluble in ethanol, and slightly soluble in water.

Each packet of LAMISIL Oral Granules contains:

*Active Ingredients:* terbinafine hydrochloride (equivalent to 125 mg or 187.5 mg terbinafine base)

*Inactive Ingredients:* basic butylated methacrylate copolymer, colloidal silicon dioxide NF, dibutyl sebacate NF, hypromellose USP, magnesium stearate NF, microcrystalline cellulose NF, nitrogen NF (filling gas), polyethylene glycol NF, sodium lauryl sulfate NF, and sodium starch glycolate NF.

## 12 CLINICAL PHARMACOLOGY

### 12.1 Mechanism of Action

Terbinafine is an allylamine antifungal [see *Clinical Pharmacology (12.4)*].

### 12.2 Pharmacodynamics

The pharmacodynamics of LAMISIL (terbinafine hydrochloride) Oral Granules is unknown.

### 12.3 Pharmacokinetics

The pharmacokinetics in children 4 to 8 years of age with tinea capitis was investigated in a pharmacokinetic study after single and repeated (for 42 days) oral administration of LAMISIL Oral Granules (N=16), once daily, using the body weight groups and doses described in Section 2. The systemic exposure ( $C_{max}$  and  $AUC_{0-24}$ ) of terbinafine in children had a relatively high interindividual variability (ranging from 36% to 64%). At steady state the  $AUC_{0-24}$  increased by a mean factor of 1.9 to 2.1 across doses. The mean (SD) effective half-life obtained from the observed accumulation was 26.7 (13.8) hours and 30.5 (9.3) hours for the 125 mg and 187.5 mg doses, respectively.

Systemic exposure to terbinafine in the children did not exceed the highest values of the systemic exposure in adults receiving repeated once daily doses of 250 mg LAMISIL (terbinafine hydrochloride) Tablets. A population pharmacokinetic evaluation of oral terbinafine that included children 4-12 years of age and adults 18-45 years of age (N=113) found that clearance (CL/F) of terbinafine is dependent on body weight in a nonlinear manner. For a typical child of 25 kg CL/F was predicted to be 19 L/h and for a typical adult of 70 kg body weight it was predicted to be 27 L/h. Over the weight range for pediatric patients included in the analysis (14.1 kg-68 kg), the predicted CL/F ranged between 15.6-26.7 L/hr. In plasma, terbinafine is greater than 99% bound to plasma proteins. Prior to excretion, terbinafine is rapidly and extensively metabolized by at least 7 CYP isoenzymes with major contributions from CYP2C9, CYP1A2, CYP3A4, CYP2C8, and CYP2C19. No metabolites have been identified that have antifungal activity similar to terbinafine. Approximately 70% of the administered dose is eliminated in the urine. In adult patients with renal impairment (creatinine clearance less than or equal to 50 mL/min) or hepatic cirrhosis, the clearance of terbinafine is decreased by approximately 50% compared to normal volunteers.

### 12.4 Microbiology

Terbinafine, an allylamine antifungal, inhibits biosynthesis of ergosterol, an essential component of fungal cell membrane, via inhibition of squalene epoxidase enzyme. This results in fungal cell death primarily due to the increased membrane

permeability mediated by the accumulation of high concentrations of squalene but not due to ergosterol deficiency. Depending on the concentration of the drug and the fungal species tested *in vitro*, terbinafine may be fungicidal. However, the clinical significance of *in vitro* data is unknown.

LAMISIL Oral Granules has been studied in tinea capitis [see *Clinical Studies (14)*].

### 13 NONCLINICAL TOXICOLOGY

#### 13.1 Carcinogenesis, Mutagenesis, Impairment of Fertility

In a 28-month oral carcinogenicity study in rats, an increase in the incidence of liver tumors was observed in males at the highest dose tested, 69 mg/kg/day (2x the MRHD based on AUC comparisons of the parent terbinafine); however, even though dose-limiting toxicity was not achieved at the highest tested dose, higher doses were not tested.

The results of a variety of *in vitro* (mutations in *E. coli* and *S. typhimurium*, DNA repair in rat hepatocytes, mutagenicity in Chinese hamster fibroblasts, chromosome aberration and sister chromatid exchanges in Chinese hamster lung cells), and *in vivo* (chromosome aberration in Chinese hamsters, micronucleus test in mice) genotoxicity tests gave no evidence of a mutagenic or clastogenic potential.

Oral reproduction studies in rats at doses up to 300 mg/kg/day (approximately 12x the MRHD based on BSA comparisons) did not reveal any specific effects on fertility or other reproductive parameters. Intravaginal application of terbinafine hydrochloride at 150 mg/day in pregnant rabbits did not increase the incidence of abortions or premature deliveries nor affect fetal parameters.

#### 13.2 Animal Toxicology and/or Pharmacology

A wide range of *in vivo* studies in mice, rats, dogs, and monkeys, and *in vitro* studies using rat, monkey, and human hepatocytes suggest that peroxisome proliferation in the liver is a rat-specific finding. However, other effects, including increased liver weights and APTT, occurred in dogs and monkeys at doses giving  $C_{ss}$  trough levels of the parent terbinafine 2-3x those seen in humans at the MRHD. Higher doses were not tested.

In a 52-week oral toxicology study conducted in juvenile maturing dogs, increased heart and liver weights were noted in males and signs of CNS disturbance including 3 cases of single episodes of seizures were noted in females at the highest dose tested, 100 mg/kg/day [19x (males) and 10x (females) the MRHD based on AUC comparisons of the parent terbinafine]. No treatment related findings were noted at 30 mg/kg/day [1.6x (males) and 1.9x (females) the MRHD based on AUC comparisons of the parent terbinafine] in this study.

### 14 CLINICAL STUDIES

Two randomized, multinational trials were conducted to investigate the safety and efficacy of LAMISIL (terbinafine hydrochloride) Oral Granules in the treatment of subjects 4 to 12 years old with tinea capitis. LAMISIL Oral Granules was dosed based on body weight. Griseofulvin dosed at 10-20 mg/kg was used as a comparator. Subjects were dosed for 6 weeks and followed for an additional 4 weeks.

The 2 trials enrolled 50% of subjects from the U.S. Additionally, among those with positive cultures, 65% and 54% of infections were due to *T. tonsurans*, and 19% and 17% due to *M. canis* in Studies 1 and 2, respectively.

The primary efficacy endpoint was the proportion of subjects with complete cure (negative KOH, negative culture, and absence of clinical signs of infection) at week 10. Table 3 below lists the efficacy results for Studies 1 and 2 overall and according to the dermatophyte species (*T. tonsurans*, *M. canis*, or Other).

**Table 3: Primary Efficacy Results by Dermatophyte Species**

	Study 1		Study 2	
	Terbinafine	Griseofulvin	Terbinafine	Griseofulvin
<b>All Dermatophytes</b>	(N=411)	(N=197)	(N=441)	(N=237)
Complete Cure	190 (46.2%)	67 (34.0%)	194 (44.0%)	103 (43.5%)
<b><i>T. tonsurans</i></b>	(N=264)	(N=131)	(N=243)	(N=126)
Complete Cure	148 (56.1%)	45 (34.4%)	116 (47.7%)	46 (36.5%)
<b><i>M. canis</i></b>	(N=80)	(N=37)	(N=72)	(N=45)

Complete Cure	19 (23.8%)	13 (35.1%)	22 (30.6%)	23 (51.1%)
<b>Other*</b>	(N=67)	(N=29)	(N=126)	(N=66)
Complete Cure	23 (34.2%)	9 (31.0%)	56 (44.4%)	34 (51.5%)

\* *T. violaceum*, *M. audouinii*, *T. mentagrophytes*, *T. rubrum*, *M. gypseum*, and *M. vanbreuseghemii*.

## 16 HOW SUPPLIED/STORAGE AND HANDLING

### LAMISIL (terbinafine hydrochloride) Oral Granules 125 mg and 187.5 mg

LAMISIL Oral Granules is supplied in cartons containing 14 laminated aluminum packets. Each packet contains approximately either 30 or 45 off-white to yellowish, round, biconvex, film-coated granules, corresponding to a single total dose of 125 mg or 187.5 mg (terbinafine base equivalent) per packet.

#### 125 mg per packet

Carton of 14 packets.....NDC 0078-0499-58

Pack of 3 cartons each containing 14 packets (42 packets).....NDC 0078-0499-59

#### 187.5 mg per packet

Carton of 14 packets.....NDC 0078-0500-58

Pack of 3 cartons each containing 14 packets (42 packets).....NDC 0078-0500-59

Storage conditions of LAMISIL Oral Granules 125 mg and 187.5 mg: Store at 25°C (77°F); excursions permitted to 15°C to 30°C (59°F to 86°F) [see USP Controlled Room Temperature].

## 17 PATIENT COUNSELING INFORMATION

Advise the patient to read the FDA-Approved Medication Guide and Instructions for Use.

Patients taking LAMISIL (terbinafine hydrochloride) Oral Granules should receive the following information and instructions:

- Advise patients and/or their guardian to immediately report to their physician or get emergency help if they experience any of the following symptoms: hives, mouth sores, blistering and peeling of skin, swelling of face, lips, tongue, or throat, difficulty swallowing or breathing. LAMISIL Oral Granules treatment should be discontinued.
- Advise patients prescribed LAMISIL Oral Granules and/or their guardian to report immediately to their physician any symptoms of persistent nausea, anorexia, fatigue, vomiting, right upper abdominal pain, jaundice, dark urine, or pale stools. LAMISIL Oral Granules treatment should be discontinued.
- Advise patients and/or their guardian to report to their physician any signs of taste disturbance, smell disturbance, and/or depressive symptoms, fever, skin eruption, lymph node enlargement, erythema, scaling, loss of pigment, and unusual photosensitivity that can result in a rash. LAMISIL Oral Granules treatment should be discontinued.
- Advise patients and/or their guardian to minimize exposure to natural and artificial sunlight (tanning beds or UVA/B treatment) while using LAMISIL Oral Granules.
- Advise patients and/or their guardian to call their physician if they take too many LAMISIL Oral Granules.

Distributed by:

Novartis Pharmaceuticals Corporation

East Hanover, New Jersey 07936

© Novartis

T2017-XX

January 2017

## MEDICATION GUIDE

LAMISIL® (lam-i-sil)

(terbinafine hydrochloride) Oral Granules

### What is the most important information I should know about LAMISIL Oral Granules?

LAMISIL Oral Granules may cause serious side effects, including:

- **Liver problems that can lead to the need for a liver transplant, or death.** This can happen in people who have liver problems and in people who have never had liver problems. Tell your doctor right away if you get any of these symptoms of a liver problem:
  - nausea
  - poor appetite
  - tiredness
  - vomiting
  - upper right stomach-area (abdomen) pain
  - yellowing of your skin or eyes (jaundice)
  - dark (tea-colored) urine
  - pale or light colored stools

Your doctor should do a blood test to check you for liver problems before you start treatment with LAMISIL Oral Granules. Your doctor may also check you for liver problems during treatment, and tell you to stop taking LAMISIL Oral Granules if you develop liver problems.

### What is LAMISIL Oral Granules?

LAMISIL Oral Granules is a prescription medicine used to treat a fungal infection of the scalp (tinea capitis) in people 4 years of age and older.

### Who should not take LAMISIL Oral Granules?

**Do not take LAMISIL Oral Granules if you:**

- have had a severe allergic reaction to terbinafine hydrochloride when taken by mouth.
- have had liver disease for a long time (chronic) or have active liver disease.

### What should I tell my doctor before taking LAMISIL Oral Granules?

**Before taking LAMISIL Oral Granules, tell your doctor about all of your medical conditions, including if you:**

- have or had liver problems
- have a weakened immune system (immunocompromised)
- have lupus (an autoimmune disease)
- are pregnant or plan to become pregnant. It is not known if LAMISIL Oral Granules will harm your unborn baby. You should not start taking LAMISIL during pregnancy.
- are breastfeeding or plan to breastfeed. LAMISIL passes into your breast milk and may harm your baby. You should not breastfeed while taking LAMISIL Oral Granules. Talk to your doctor about the best way to feed your baby if you take LAMISIL Oral Granules.

**Tell your doctor about all the medicines you take**, including prescription and over-the-counter medicines, vitamins, and herbal supplements.

LAMISIL Oral Granules may affect the way other medicines work and other medicines may affect how LAMISIL Oral Granules works.

### How should I take LAMISIL Oral Granules?

- LAMISIL comes as oral granules that you sprinkle on food and take by mouth.
- See the Instructions for Use that come with LAMISIL Oral Granules for information about the correct way to prepare and take or give a dose.
- Take LAMISIL Oral Granules exactly as your doctor tells you to take it.
- Take LAMISIL Oral Granules 1 time each day with pudding or other soft, non-acidic food such as mashed potatoes. Do not use applesauce or a fruit-based food.
- Your doctor will tell you how much LAMISIL Oral Granules to take and when to take it.
- If you take too much LAMISIL Oral Granules call your doctor. You may have the following symptoms:
  - nausea
  - stomach-area (abdomen) pain
  - frequent urination
  - rash
  - headache
  - vomiting
  - dizziness

### What should I avoid while taking LAMISIL Oral Granules?

Avoid sunlight. LAMISIL Oral Granules can make your skin sensitive to the sun and the light from sunlamps and tanning beds. You can get a severe sunburn. Use sunscreen and wear a hat and clothes that cover your skin if you have to be in sunlight. Talk to your doctor if you get sunburn.

### What are the possible side effects of LAMISIL Oral Granules?

LAMISIL Oral Granules may cause serious side effects, including:

- See “What is the most important information I should know about LAMISIL Oral Granules?”
- **Change in your sense of taste or loss of taste** may happen with LAMISIL Oral Granules, but can also be severe. This may improve within several weeks after you stop taking LAMISIL Oral Granules, but may last for a long time or may become permanent. Tell your doctor if you develop any of the following:
  - change in your sense of taste or loss of taste
  - poor appetite
  - change in your mood or depressive symptoms. See the list of depressive symptoms below.
  - weight loss
  - anxiousness
- **Change in your sense of smell or loss of smell** may happen with LAMISIL Oral Granules. This may improve after you stop taking LAMISIL Oral Granules, but may last for a long time or may become permanent. Tell your doctor if you have a change in your sense of smell or loss of smell.
- **Depressive symptoms. Tell your doctor right away if you develop any of these signs or symptoms:**
  - feel sad or worthless
  - change in sleep pattern
  - mood changes
  - loss of energy or interest in daily activities
  - restlessness
- **Low white blood cell count.** LAMISIL Oral Granules may decrease your white blood cells, especially neutrophils. You may have a higher risk of getting an infection when your white blood cell count is low.
- **Serious skin or allergic reactions, which may include problems with some of your body organs. Tell your doctor right away or get emergency medical help** if you get any of these symptoms:
  - skin rash
  - hives
  - sores in your mouth, or your skin blisters and peels
  - swelling of your face, eyes, lips, tongue or throat
  - trouble swallowing or breathing
  - fever
  - swollen lymph nodesAlso tell your doctor about any new symptoms, such as cough, chest pain, fast heartbeat, or blood in your urine.
- **New or worsening lupus.** Stop taking LAMISIL Oral Granules and tell your doctor if you get any of the following:
  - a skin rash that gets worse (progresses), is scaly, red, shows scarring, or loss of skin color
  - unusual sensitivity to the sun that can cause a rash
- **Blood clotting problems.** When taking LAMISIL Oral Granules, you may develop a blood clotting problem. Tell your doctor, if you get any unexplained bleeding or bruising.

The most common side effects of LAMISIL Oral Granules include:

- nasal congestion
- headache
- fever
- cough
- vomiting
- upper respiratory infection
- upper stomach-area (abdomen) pain
- diarrhea

These are not all of the possible side effects of LAMISIL Oral Granules.

Call your doctor for medical advice about side effects. You may report side effects to FDA at 1-800-FDA-1088.

### How should I store LAMISIL Oral Granules?

- Store LAMISIL Oral Granules at room temperature between 68°F to 77°F (20°C to 25°C).

**Keep LAMISIL Oral Granules and all medicines out of the reach of children.**

**General information about the safe and effective use of LAMISIL Oral Granules.**

Medicines are sometimes prescribed for purposes other than those listed in Medication Guide. Do not use LAMISIL Oral Granules for a condition for which it was not prescribed. Do not give LAMISIL Oral Granules to other people, even if they have the same symptoms that you have. It may harm them. You can ask your pharmacist or doctor for information about LAMISIL Oral Granules that is written for health professionals.

**What are the ingredients in LAMISIL Oral Granules?**

Active ingredient: terbinafine hydrochloride

Inactive ingredients: basic butylated methacrylate copolymer, colloidal silicon dioxide, dibutyl sebacate, hypromellose, magnesium stearate, microcrystalline cellulose, nitrogen (filling gas), polyethylene glycol, sodium lauryl sulfate, sodium starch glycolate

Distributed by:  
Novartis Pharmaceuticals Corporation  
East Hanover, New Jersey 07936

© Novartis

T2017-XX/T2017-XX

This Medication Guide has been approved by the U.S. Food and Drug Administration

Issued: January 2017



## INSTRUCTIONS FOR USE

LAMISIL® (Lam-i-sil)

(terbinafine hydrochloride) Oral Granules

- Before taking or giving a dose of LAMISIL Oral Granules, read this Instructions for Use to be sure you prepare, and take or give the Oral Granules correctly.
- Follow your doctor's instructions for the dose of LAMISIL Oral Granules to take or give. The dose is based on your or your child's body weight. The prescribed dose may be either 1 packet or 2 packets of LAMISIL Oral Granules.
- Ask your doctor or pharmacist if you are not sure how to prepare, take or give the prescribed dose of LAMISIL Oral Granules.

### Preparing and giving a dose of LAMISIL Oral Granules for children and adults.

1. Remove the prescribed number of packets (either 1 or 2) of LAMISIL Oral Granules from the carton.
2. Hold the packet with the cut line on top.
3. Tear the packet open along cut line, or use scissors to cut across line.
4. Prepare a small amount of soft food, such as pudding or other soft, non-acidic food such as mashed potatoes. **Do not use applesauce or fruit-based foods.**
  - Carefully pour the entire contents of the prescribed number of packets of LAMISIL Oral Granules onto the soft food.
  - If your dose is 1 packet of LAMISIL Oral Granules, use 1 spoonful of soft food for your dose.
  - If your dose is 2 packets of LAMISIL Oral Granules, you can either sprinkle the contents of both packets onto 1 spoonful of soft food, **or** you can sprinkle each packet onto a separate spoonful of soft food.
5. Make sure that no LAMISIL Oral Granules remain in the packet.
6. Take or give all of the soft food and LAMISIL Oral Granules combination.
  - Swallow combination of food and Oral Granules without chewing.
  - Take with food.

### How should I store LAMISIL Oral Granules?

- Store LAMISIL Oral Granules at room temperature between 68°F to 77°F (20°C to 25°C).

### Keep LAMISIL Oral Granules and all medicines out of the reach of children.

This Instructions for Use has been approved by the U.S. Food and Drug Administration.

Distributed by:

Novartis Pharmaceuticals Corporation  
East Hanover, New Jersey 07936

Issued: August 2016

© Novartis

T2017-XX/T2017-XX/T2016-71  
Month Year/Month Year/August 2016