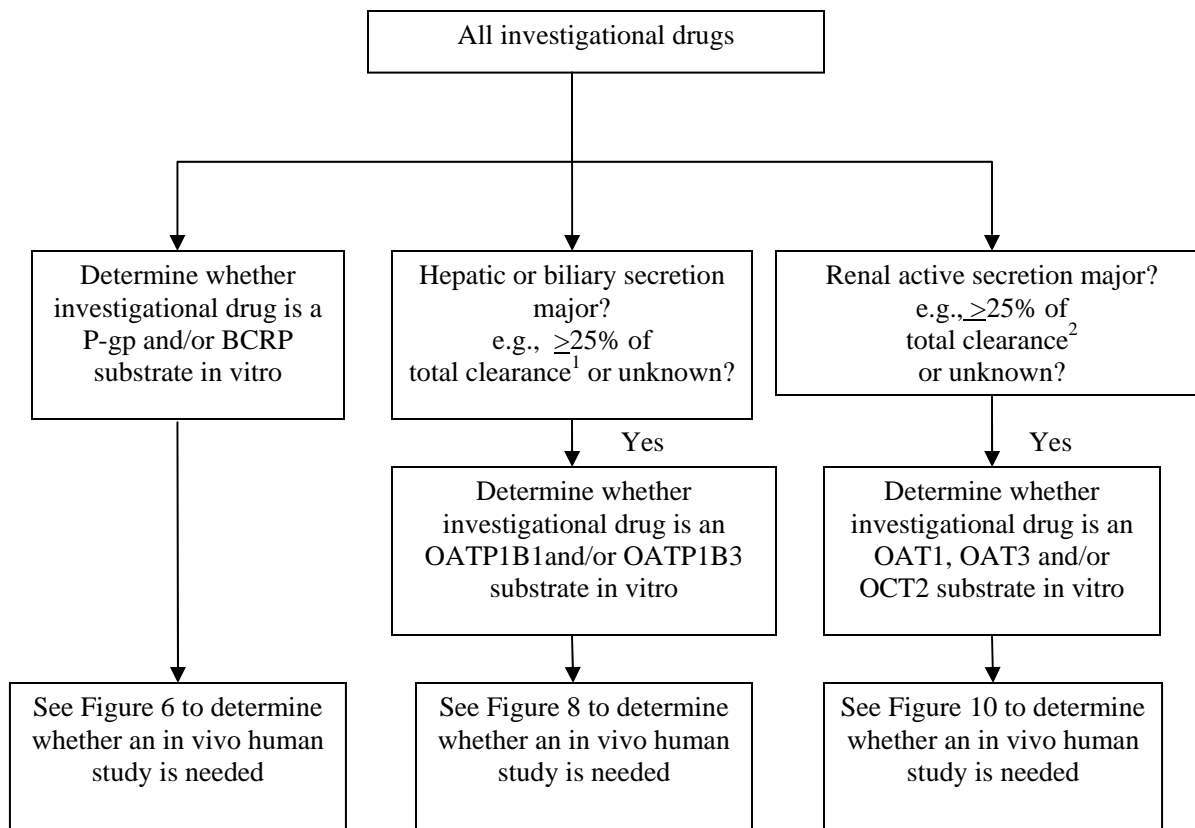


**Possible Model for Decision Making: Transporter-Based Drug-Drug Interaction Studies (Figure 5)**

**Figure 5. Evaluation of Investigational Drugs as Substrates for P-gp, BCRP, OATP1B1, OATP1B3, OAT1, OAT3, and OCT2 Transporters.**



<sup>1</sup> Biliary secretion can be estimated from preclinical data, in vitro hepatocyte uptake data or radiolabeled ADME data, and nonrenal clearance data.

<sup>2</sup> Percent (%) active renal secretion was estimated from  $(CL_r - fu * GFR) / CL_{Total}$ ; fu is the unbound fraction in plasma.