

HIGHLIGHTS OF PRESCRIBING INFORMATION

These highlights do not include all the information needed to use JAYPIRCA safely and effectively. See full prescribing information for JAYPIRCA.

JAYPIRCA® (pirtobrutinib) tablets, for oral use

Initial U.S. Approval: 2023

RECENT MAJOR CHANGES

Indications and Usage, Chronic Lymphocytic Leukemia/Small Lymphocytic Lymphoma (1.2) 12/2023

INDICATIONS AND USAGE

JAYPIRCA is a kinase inhibitor indicated for the treatment of

- Adult patients with relapsed or refractory mantle cell lymphoma (MCL) after at least two lines of systemic therapy, including a BTK inhibitor. (1.1).

This indication is approved under accelerated approval based on response rate. Continued approval for this indication may be contingent upon verification and description of clinical benefit in a confirmatory trial.

- Adult patients with chronic lymphocytic leukemia or small lymphocytic lymphoma (CLL/SLL) who have received at least two prior lines of therapy, including a BTK inhibitor and a BCL-2 inhibitor. (1.2).

This indication is approved under accelerated approval based on response rate. Continued approval for this indication may be contingent upon verification and description of clinical benefit in a confirmatory trial.

DOSAGE AND ADMINISTRATION

- Recommended dosage: 200 mg orally once daily; swallow whole with water, with or without food. Do not cut, crush, or chew tablets. (2.1)
- Manage toxicity using treatment interruption, dosage reduction, or discontinuation. (2.2)
- Reduce dose in patients with severe renal impairment. (2.3, 8.6)

DOSAGE FORMS AND STRENGTHS

Tablets: 50 mg, 100 mg (3).

CONTRAINDICATIONS

None (4).

WARNINGS AND PRECAUTIONS

- Infections: Monitor for signs and symptoms of infection, evaluate promptly, and treat. (5.1)
- Hemorrhage: Monitor for bleeding and manage appropriately. (5.2)
- Cytopenias: Monitor complete blood counts during treatment. (5.3)
- Cardiac Arrhythmias: Monitor for symptoms of arrhythmias and manage appropriately. (5.4)
- Second Primary Malignancies: Other malignancies have developed, including skin cancers and other carcinomas. Monitor and advise patients to use sun protection. (5.5)
- Embryo-Fetal Toxicity: Can cause fetal harm. Advise females of reproductive potential of potential risk to a fetus and to use effective contraception. (5.6, 8.1, 8.3)

ADVERSE REACTIONS

Most common adverse reactions (≥ 20%) are fatigue, musculoskeletal pain, diarrhea, COVID-19, bruising, and cough. Grade 3 or 4 laboratory abnormalities (≥ 10%) are neutrophil count decreased, platelet count decreased, hemoglobin decreased, and lymphocyte count decreased. (6.1).

To report SUSPECTED ADVERSE REACTIONS, contact Eli Lilly and Company at 1-800-LillyRx (1-800-545-5979) or FDA at 1-800-FDA-1088 or www.fda.gov/medwatch.

DRUG INTERACTIONS

- Strong CYP3A Inhibitors: Avoid concomitant use. If concomitant use is unavoidable, reduce the JAYPIRCA dose. (2.4, 7.1)
- Strong or Moderate CYP3A Inducers: Avoid concomitant use. If concomitant use of moderate CYP3A inducers is unavoidable, increase the JAYPIRCA dose. (2.5, 7.1)
- Sensitive CYP2C8, CYP2C19, CYP3A, P-gp, or BCRP Substrates: For substrates where minimal concentration changes may increase the risk of adverse reactions, follow recommendations for co-administration with CYP2C8, CYP2C19, CYP3A, P-gp, or BCRP inhibitors provided in their approved product labeling. (7.2)

USE IN SPECIFIC POPULATIONS

Lactation: Advise not to breastfeed (8.2)

See 17 for PATIENT COUNSELING INFORMATION and FDA-approved patient labeling.

Revised: 12/2023

FULL PRESCRIBING INFORMATION: CONTENTS*

1 INDICATIONS AND USAGE

- 1.1 Mantle Cell Lymphoma
- 1.2 Chronic Lymphocytic Leukemia/Small Lymphocytic Lymphoma

2 DOSAGE AND ADMINISTRATION

- 2.1 Recommended Dosage
- 2.2 Dose Modifications for Adverse Reactions
- 2.3 Dosage Modifications for Patients with Severe Renal Impairment
- 2.4 Dosage Modifications for Concomitant Use with Strong CYP3A Inhibitors
- 2.5 Dosage Modifications for Concomitant Use with CYP3A Inducers

3 DOSAGE FORMS AND STRENGTHS

4 CONTRAINDICATIONS

5 WARNINGS AND PRECAUTIONS

- 5.1 Infections
- 5.2 Hemorrhage
- 5.3 Cytopenias
- 5.4 Cardiac Arrhythmias
- 5.5 Second Primary Malignancies
- 5.6 Embryo-Fetal Toxicity

6 ADVERSE REACTIONS

- 6.1 Clinical Trials Experience

7 DRUG INTERACTIONS

- 7.1 Effect of Other Drugs on JAYPIRCA
- 7.2 Effect of JAYPIRCA on Other Drugs

8 USE IN SPECIFIC POPULATIONS

- 8.1 Pregnancy
- 8.2 Lactation
- 8.3 Females and Males of Reproductive Potential
- 8.4 Pediatric Use
- 8.5 Geriatric Use
- 8.6 Renal Impairment
- 8.7 Hepatic Impairment

11 DESCRIPTION

12 CLINICAL PHARMACOLOGY

- 12.1 Mechanism of action
- 12.2 Pharmacodynamics
- 12.3 Pharmacokinetics

13 NONCLINICAL TOXICOLOGY

- 13.1 Carcinogenesis, mutagenesis, impairment of fertility

14 CLINICAL STUDIES

- 14.1 Mantle Cell Lymphoma

14.2 Chronic Lymphocytic Leukemia/Small Lymphocytic
Lymphoma

16 HOW SUPPLIED/STORAGE AND HANDLING

17 PATIENT COUNSELING INFORMATION

* Sections or subsections omitted from the full prescribing information
are not listed.

FULL PRESCRIBING INFORMATION

1 INDICATIONS AND USAGE

1.1 Mantle Cell Lymphoma

JAYPIRCA is indicated for the treatment of adult patients with relapsed or refractory mantle cell lymphoma (MCL) after at least two lines of systemic therapy, including a BTK inhibitor.

This indication is approved under accelerated approval based on response rate [see *Clinical Studies (14.1)*]. Continued approval for this indication may be contingent upon verification and description of clinical benefit in a confirmatory trial.

1.2 Chronic Lymphocytic Leukemia/Small Lymphocytic Lymphoma

JAYPIRCA is indicated for the treatment of adult patients with chronic lymphocytic leukemia or small lymphocytic lymphoma (CLL/SLL) who have received at least two prior lines of therapy, including a BTK inhibitor and a BCL-2 inhibitor.

This indication is approved under accelerated approval based on response rate [see *Clinical Studies (14.2)*]. Continued approval for this indication may be contingent upon verification and description of clinical benefit in a confirmatory trial.

2 DOSAGE AND ADMINISTRATION

2.1 Recommended Dosage

The recommended dosage of JAYPIRCA is 200 mg orally once daily until disease progression or unacceptable toxicity.

Advise patients of the following:

- Swallow tablets whole with water. Do not cut, crush, or chew tablets.
- Take JAYPIRCA at the same time each day. JAYPIRCA may be taken with or without food.
- If a dose of JAYPIRCA is missed by more than 12 hours, do not make up the dose and take the next dose as scheduled.

2.2 Dosage Modifications for Adverse Reactions

Recommended dosage modifications of JAYPIRCA for adverse reactions are presented in Table 1 [see *Warnings and Precautions (5.1, 5.2, 5.3, and 5.4)*].

Table 1: Recommended Dosage Modification of JAYPIRCA for Adverse Reactions

Adverse Reaction	Occurrences Requiring Dosage Modification	Modification (Starting Dosage: 200 mg once daily)
<ul style="list-style-type: none">• Grade 3 or greater non-hematologic toxicity^a• Absolute neutrophil count < 1 to 0.5 x 10⁹/L with fever and/or infection• Absolute neutrophil count < 0.5 x 10⁹/L lasting 7 or more days• Platelet count < 50 to 25 x 10⁹/L with bleeding• Platelet count < 25 x 10⁹/L	First occurrence	Interrupt JAYPIRCA until recovery to Grade 1 or baseline; restart at original dosage (200 mg once daily) ^a .
	Second occurrence	Interrupt JAYPIRCA until recovery to Grade 1 or baseline; restart at 100 mg once daily.
	Third occurrence	Interrupt JAYPIRCA until recovery to Grade 1 or baseline; restart at 50 mg once daily.
	Fourth occurrence	Discontinue JAYPIRCA.

Dose modification is not recommended for asymptomatic lymphocytosis. Asymptomatic lipase increase may not necessarily warrant dose modification.

^a Evaluate the benefit-risk before resuming treatment at the same dose for a Grade 4 non-hematological toxicity.

2.3 Dosage Modifications for Patients with Severe Renal Impairment

For patients with severe renal impairment (eGFR 15-29 mL/min), reduce the JAYPIRCA dose to 100 mg once daily if the current dose is 200 mg once daily otherwise reduce the dose by 50 mg. If the current dosage is 50 mg once daily,

discontinue JAYPIRCA [see *Use in Specific Populations (8.7)*, *Clinical Pharmacology (12.3)*]. No dosage adjustment of JAYPIRCA is recommended in patients with mild to moderate renal impairment (eGFR 30-89 mL/min).

2.4 Dosage Modifications for Concomitant Use with Strong CYP3A Inhibitors

Avoid concomitant use of strong CYP3A inhibitors with JAYPIRCA [see *Drug Interactions (7.1)*, *Clinical Pharmacology (12.3)*]. If concomitant use of a strong CYP3A inhibitor is unavoidable, reduce the JAYPIRCA dose by 50 mg. If the current dosage is 50 mg once daily, interrupt JAYPIRCA treatment for the duration of strong CYP3A inhibitor use. After discontinuation of a strong CYP3A inhibitor for 5 half-lives, resume the JAYPIRCA dose that was taken prior to initiating the strong CYP3A inhibitor.

2.5 Dosage Modifications for Concomitant Use with CYP3A Inducers

Avoid concomitant use of strong or moderate CYP3A inducers with JAYPIRCA [see *Drug Interactions (7.1)*, *Clinical Pharmacology (12.3)*]. If concomitant use with moderate CYP3A inducers is unavoidable and the current dosage of JAYPIRCA is 200 mg once daily, increase the dose to 300 mg. If the current dosage is 50 mg or 100 mg once daily, increase the dose by 50 mg.

3 DOSAGE FORMS AND STRENGTHS

Tablets:

Each 50 mg tablet is blue, arc-triangle shaped, film-coated, and debossed with "Lilly 50" on one side and "6902" on the other side.

Each 100 mg tablet is blue, round, film-coated, and debossed with "Lilly 100" on one side and "7026" on the other side.

4 CONTRAINDICATIONS

None.

5 WARNINGS AND PRECAUTIONS

5.1 Infections

Fatal and serious infections (including bacterial, viral, or fungal infections) and opportunistic infections have occurred in patients treated with JAYPIRCA. In the clinical trial, Grade 3 or higher infections occurred in 24% of 593 patients, most commonly pneumonia (14%), with fatal infections occurring in 4.4% of patients. Sepsis occurred in 6% of patients and febrile neutropenia in 4%. In patients with CLL/SLL, Grade 3 or higher infections occurred in 32% of patients, with fatal infections occurring in 8%. Opportunistic infections after treatment with JAYPIRCA have included, but are not limited to, *Pneumocystis jirovecii* pneumonia and fungal infection [see *Adverse Reactions (6.1)*].

Consider prophylaxis, including vaccinations and antimicrobial prophylaxis, in patients who are at increased risk for infections, including opportunistic infections. Monitor patients for signs and symptoms of infection, evaluate promptly, and treat appropriately. Based on severity, reduce dose, temporarily withhold, or permanently discontinue JAYPIRCA [see *Dosage and Administration (2.2)*].

5.2 Hemorrhage

Fatal and serious hemorrhage has occurred with JAYPIRCA. Major hemorrhage (defined as Grade 3 or higher bleeding or any central nervous system bleeding) occurred in 3% of 593 patients treated with JAYPIRCA, including gastrointestinal hemorrhage; fatal hemorrhage occurred in 0.3% of patients. Bleeding of any grade, excluding bruising and petechiae, occurred in 17% of patients [see *Adverse Reactions (6.1)*].

Major hemorrhage occurred in 2.3% of patients taking JAYPIRCA without antithrombotic agents and 0.7% of patients taking JAYPIRCA with antithrombotic agents. Consider the risks and benefits of antithrombotic agents when co-administered with JAYPIRCA. Monitor patients for signs of bleeding. Based on severity of bleeding, reduce dose, temporarily withhold, or permanently discontinue JAYPIRCA [see *Dosage and Administration (2.2)*].

Consider the benefit-risk of withholding JAYPIRCA for 3 to 7 days pre- and post-surgery depending upon the type of surgery and risk of bleeding.

5.3 Cytopenias

JAYPIRCA can cause cytopenias, including neutropenia, thrombocytopenia, and anemia.

In the clinical trial, Grade 3 or 4 cytopenias, including decreased neutrophils (26%), decreased platelets (12%), and decreased hemoglobin (12%) developed in patients treated with JAYPIRCA. Grade 4 decreased neutrophils developed in 14% of patients and Grade 4 decreased platelets developed in 6% of patients [see *Adverse Reactions* (6.1)].

Monitor complete blood counts regularly during treatment. Based on severity, reduce dose, temporarily withhold, or permanently discontinue JAYPIRCA [see *Dosage and Administration* (2.2)].

5.4 Cardiac Arrhythmias

Cardiac arrhythmias, including atrial fibrillation and atrial flutter, were reported in recipients of JAYPIRCA. Atrial fibrillation or flutter were reported in 3.2% of patients, with Grade 3 or 4 atrial fibrillation or flutter reported in 1.5% of 593 patients in the clinical trial [see *Adverse Reactions* (6.1)]. Other serious cardiac arrhythmias such as supraventricular tachycardia and cardiac arrest occurred in 0.5% of patients. Patients with cardiac risk factors, such as hypertension, or previous arrhythmias may be at increased risk.

Monitor for signs and symptoms of arrhythmias (e.g., palpitations, dizziness, syncope, dyspnea) and manage appropriately. Based on severity, reduce dose, temporarily withhold, or permanently discontinue JAYPIRCA [see *Dosage and Administration* (2.2)].

5.5 Second Primary Malignancies

Second primary malignancies, including non-skin carcinomas, developed in 9% of 593 patients treated with JAYPIRCA monotherapy. The most frequent malignancy was non-melanoma skin cancer, reported in 4.6% of 593 patients. Other second primary malignancies included solid tumors (including genitourinary and breast cancers) and melanoma. Advise patients to use sun protection and monitor patients for the development of second primary malignancies.

5.6 Embryo-Fetal Toxicity

Based on findings in animals, JAYPIRCA can cause fetal harm when administered to a pregnant woman. In animal reproduction studies, administration of pirtobrutinib to pregnant rats during the period of organogenesis caused embryo-fetal toxicity including embryo-fetal mortality and malformations at maternal exposures (AUC) approximately 3-times the recommended dose of 200 mg once daily. Advise pregnant women of the potential risk to a fetus. Advise females of reproductive potential to use effective contraception during treatment with JAYPIRCA and for one week after the last dose [see *Use in Specific Populations* (8.1, 8.3)].

6 ADVERSE REACTIONS

The following clinically significant adverse reactions are described elsewhere in the labeling:

- Infections [see *Warnings and Precautions* (5.1)]
- Hemorrhage [see *Warnings and Precautions* (5.2)]
- Cytopenias [see *Warnings and Precautions* (5.3)]
- Atrial Fibrillation and Atrial Flutter [see *Warnings and Precautions* (5.4)]
- Second Primary Malignancies [see *Warnings and Precautions* (5.5)]

6.1 Clinical Trials Experience

Because clinical trials are conducted under widely varying conditions, adverse reaction rates observed in the clinical trials of a drug cannot be compared to rates in the clinical trials of another drug and may not reflect the rates observed in the general patient population.

The data in the WARNINGS AND PRECAUTIONS reflect exposure to JAYPIRCA as a single-agent, administered at 200 mg once daily in 593 patients with hematologic malignancies in the BRUIN study. Among these 593 patients, the median duration of exposure was 10 months, 62% were exposed for at least 6 months and 45% were exposed for at least one year.

In this pooled safety population, the most common ($\geq 20\%$) adverse reactions, including laboratory abnormalities, were decreased neutrophil count (46%), decreased hemoglobin (39%), fatigue (32%), decreased lymphocyte count (31%), musculoskeletal pain (30%), decreased platelet count (29%), diarrhea (24%), COVID-19 (22%), bruising (21%), and cough (20%).

Mantle Cell Lymphoma

BRUIN

The safety of JAYPIRCA was evaluated in the BRUIN trial in patients with MCL who received a prior BTK inhibitor [see *Clinical Studies (14.1)*]. The trial required a platelet count $\geq 50 \times 10^9/L$, absolute neutrophil count $\geq 0.75 \times 10^9/L$, hepatic transaminases ≤ 2.5 times upper limit of normal (ULN), and an ECOG performance status of 0 to 2. The trial excluded patients with active central nervous system (CNS) involvement by lymphoma, significant cardiovascular disease, major bleeding or grade ≥ 3 arrhythmia with a prior BTK inhibitor, prolonged QTc interval, or need for a strong CYP3A inhibitor or inducer or strong P-gp inhibitor.

Patients received JAYPIRCA 200 mg orally once daily until disease progression or unacceptable toxicity (n = 128); 36% were exposed for 6 months or longer and 10% were exposed for at least one year. The median number of prior therapies was 3 (range: 1-9). The median age was 71 years (range: 46 to 88 years) and 80% of patients were male. Race was reported for all patients; 78% were White, 14% were Asian, 2.3% were Black, and 2.3% were Hispanic or Latino.

Serious adverse reactions occurred in 38% of patients who received JAYPIRCA. Serious adverse reactions that occurred in $\geq 2\%$ of patients were pneumonia (14%), COVID-19 (4.7%), musculoskeletal pain (3.9%), hemorrhage (2.3%), pleural effusion (2.3%), and sepsis (2.3%). Fatal adverse reactions within 28 days of the last dose of JAYPIRCA occurred in 7% of patients, most commonly due to infections (4.7%) including COVID-19 (3.1% of all patients).

Adverse reactions led to dose reductions in 4.7%, treatment interruption in 32%, and permanent discontinuation of JAYPIRCA in 9%. Adverse reactions that resulted in dosage modification in $> 5\%$ of patients included pneumonia and neutropenia. Adverse reactions which resulted in permanent discontinuation of JAYPIRCA in $> 1\%$ of patients included pneumonia.

The most common adverse reactions ($\geq 15\%$), excluding laboratory terms, were fatigue, musculoskeletal pain, diarrhea, edema, dyspnea, pneumonia, and bruising.

Table 2 summarizes select adverse reactions in BRUIN.

Table 2: Adverse Reactions ($\geq 10\%$) in Patients with MCL Who Received JAYPIRCA

	JAYPIRCA 200 mg once daily	
	N = 128	
Adverse Reactions ^a	All Grades (%)	Grade 3-4 (%)
General Disorders		
Fatigue	29	1.6
Edema	18	0.8
Fever	13	-
Musculoskeletal and Connective Tissue Disorders		
Musculoskeletal pain	27	3.9
Arthritis or arthralgia	12	0.8
Gastrointestinal Disorders		
Diarrhea	19	-
Constipation	13	-
Abdominal pain	11	0.8
Nausea	11	-
Respiratory, thoracic, and mediastinal disorders		
Dyspnea	17	2.3
Cough	14	-
Injury		
Bruising	16	-
Infections		
Pneumonia	16 ^b	14
Upper respiratory tract infections	10	0.8
Nervous system disorders		

	JAYPIRCA 200 mg once daily	
	N = 128	
Peripheral neuropathy	14	0.8
Dizziness	10	-
Skin and subcutaneous disorders		
Rash	14	-
Vascular disorders		
Hemorrhage	11 ^c	3.1

^a Each term listed includes other related terms.

^b includes 1 fatality from COVID-19 pneumonia

^c includes 1 fatality from hemorrhage

Clinically relevant adverse reactions in < 10% include vision changes, memory changes, headache, urinary tract infection, herpesvirus infection, and tumor lysis syndrome.

Table 3 summarizes laboratory abnormalities in BRUIN.

Table 3: Select Laboratory Abnormalities (≥ 10%) That Worsened from Baseline in Patients with MCL Who Received JAYPIRCA

Laboratory Abnormality	JAYPIRCA ^a 200 mg once daily	
	All Grades (%)	Grade 3 or 4 (%)
Hematology		
Hemoglobin decreased	42	9
Platelet count decreased	39	14
Neutrophil count decreased	36	16
Lymphocyte count decreased	32	15
Chemistry		
Creatinine increased	30	1.6
Calcium decreased	19	1.6
AST increased	17	1.6
Potassium decreased	13	1.6
Sodium decreased	13	-
Lipase increased	12	4.4
Alkaline phosphatase increased	11	-
ALT increased	11	1.6
Potassium increased	11	0.8

^a The denominator used to calculate the rate varied from 90 to 127 based on the number of patients with a baseline value and at least one post-treatment value.

Grade 4 laboratory abnormalities in > 5% of patients included neutrophils decreased (10%), platelets decreased (7%), and lymphocytes decreased (6%).

Lymphocytosis: Upon initiation of JAYPIRCA, a temporary increase in lymphocyte counts (defined as absolute lymphocyte count increased ≥ 50% from baseline and a post-baseline value ≥ 5,000/μL) occurred in 34% of MCL patients in BRUIN.

The median time to onset of lymphocytosis was 1.1 weeks, with 75% of cases occurring within 2.1 weeks, and the median duration was 11 weeks.

Chronic Lymphocytic Leukemia/Small Lymphocytic Lymphoma

BRUIN

The safety of JAYPIRCA was evaluated in the BRUIN trial in 110 patients with CLL/SLL, with 98% receiving at least two prior lines of systemic therapy including a BTK inhibitor and a BCL-2 inhibitor [see *Clinical Studies (14.2)*]. The trial required a platelet count $\geq 50 \times 10^9/L$, absolute neutrophil count $\geq 0.75 \times 10^9/L$, hepatic transaminases ≤ 2.5 times upper limit of normal (ULN), and an ECOG performance status of 0 to 2. The trial excluded patients with active central nervous system (CNS) involvement by lymphoma, significant cardiovascular disease, major bleeding, uncontrolled or symptomatic arrhythmias, prolonged QTc interval, or need for a strong CYP3A inhibitor or inducer or strong P-gp inhibitor.

Patients received JAYPIRCA 200 mg orally once daily until disease progression or unacceptable toxicity (N = 110); 60% were exposed for at least 1 year and 14% were exposed for at least two years. The median age was 68 years (range: 41 to 88 years) and 67% of patients were male. Race was reported in 110 (100%) patients; of these patients, 89% were White, 4.5% were Black, 1.8% were Asian, and 1.8% were Hispanic or Latino. The median number of prior therapies was 5 (range: 1-11).

Serious adverse reactions occurred in 56% of patients who received JAYPIRCA. Serious adverse reactions that occurred in $\geq 5\%$ of patients were pneumonia (18%), COVID-19 (9%), sepsis (7%), and febrile neutropenia (7%). Fatal adverse reactions within 28 days of the last dose of JAYPIRCA occurred in 11% of patients, most commonly due to infections (10%), including sepsis (5%) and COVID-19 (2.7%).

Adverse reactions led to dose reductions in 3.6%, treatment interruption in 42%, and permanent discontinuation of JAYPIRCA in 9%. Adverse reactions which resulted in dose reductions of JAYPIRCA in $> 1\%$ of patients included neutropenia. Adverse reactions which resulted in treatment interruptions of JAYPIRCA in $> 5\%$ of patients included pneumonia, neutropenia, febrile neutropenia, and COVID-19. Adverse reactions which resulted in permanent discontinuation of JAYPIRCA in $> 1\%$ of patients included second primary malignancy, COVID-19, and sepsis.

The most common adverse reactions ($\geq 20\%$), excluding laboratory terms, were fatigue, bruising, cough, musculoskeletal pain, COVID-19, diarrhea, pneumonia, abdominal pain, dyspnea, hemorrhage, edema, nausea, pyrexia, and headache. [Table 4](#) summarizes select adverse reactions for patients treated on BRUIN.

Table 4: Adverse Reactions ($\geq 10\%$) in Patients with CLL/SLL Who Received JAYPIRCA

	JAYPIRCA 200 mg once daily	
	N = 110	
Adverse Reactions ^a	All Grades (%)	Grade 3-4 (%)
General Disorders		
Fatigue	36	2.7
Edema	21	0
Pyrexia	20	2.7
Injury		
Bruising	36	0
Fall	14	0.9
Respiratory, thoracic, and mediastinal disorders		
Cough	33	0
Dyspnea	22	2.7
Mucositis	12	0.9
Musculoskeletal and Connective Tissue Disorders		
Musculoskeletal pain	32	0.9
Arthritis or arthralgia	19	1.8
Infections		
COVID-19	28 ^b	7
Pneumonia	27 ^c	16

	JAYPIRCA 200 mg once daily	
	N = 110	
Adverse Reactions ^a	All Grades (%)	Grade 3-4 (%)
Upper respiratory tract infections	13	2.7
Respiratory tract infection	11	1.8
Gastrointestinal Disorders		
Diarrhea	26	0
Abdominal pain	25	2.7
Nausea	21	0
Constipation	14	0
Vascular disorders		
Hemorrhage	22 ^d	2.7
Hypertension	12	5
Nervous system disorders		
Headache	20	0.9
Peripheral neuropathy	16	3.6
Dizziness	15	0
Neurological changes	12 ^e	2.7
Skin and subcutaneous disorders		
Rash	19	0.9
Psychiatric disorders		
Insomnia	14	0
Neoplasms benign, malignant and unspecified		
Second primary malignancy	13 ^f	2.7
Renal and urinary disorders		
Renal insufficiency	12 ^g	6
Metabolism and nutrition disorders		
Decreased appetite	12	0
Cardiac disorders		
Supraventricular tachycardia	10 ^h	5

^a Each term listed includes other related terms.

^b Includes COVID-19 pneumonia. Includes 1 fatalities from COVID-19 and 2 fatalities from COVID-19 pneumonia

^c Includes COVID-19 pneumonia. Includes 2 fatalities from COVID-19 pneumonia and 1 fatality from pneumonia

^d Includes preferred terms hemorrhage, intracranial hemorrhage, and gastrointestinal hemorrhage

^e Includes preferred terms memory impairment, confusional state, encephalopathy, mental status changes

^f Includes preferred terms second primary malignancy and nonmelanoma skin cancers. 1 fatality from metastatic malignant melanoma

^g Includes preferred terms renal failure, chronic kidney disease, acute kidney injury

^h Includes preferred terms supraventricular tachycardia, sinus tachycardia, atrial fibrillation

Clinically relevant adverse reactions in < 10% include vision changes, lower respiratory tract infection, urinary tract infection, herpesvirus infection, and tumor lysis syndrome.

Table 5 summarizes laboratory abnormalities in BRUIN.

Table 5: Select Laboratory Abnormalities (≥ 20%) That Worsened from Baseline in Patients with CLL/SLL Who Received JAYPIRCA

Laboratory Abnormality	JAYPIRCA ^a 200 mg once daily	
	All Grades (%)	Grade 3 or 4 (%)
Hematology		
Neutrophil count decreased	63	45
Hemoglobin decreased	48	19
Platelet count decreased	30	15
Lymphocyte count decreased	23	8
Chemistry		
Calcium decreased	40	2.8
Sodium decreased	30	0
ALT increased	23	2.8
AST increased	23	1.9
Creatinine increased	23	0
Lipase increased	21	7
Alkaline phosphatase increased	21	0

^a The denominator used to calculate the rate varied from 83 to 108 based on the number of patients with a baseline value and at least one post-treatment value.

Grade 4 laboratory abnormalities in > 5% of patients included neutrophils decreased (23%).

****Lymphocytosis:** Upon initiation of JAYPIRCA, a temporary increase in lymphocyte counts (defined as absolute lymphocyte count increased ≥ 50% from baseline and a post-baseline value ≥ 5,000/μL) occurred in 64% of CLL/SLL patients in BRUIN. The median time to onset of lymphocytosis was 1.1 weeks, with 75% of cases occurring within 1.1 weeks, and the median duration was 19 weeks.

7 DRUG INTERACTIONS

7.1 Effect of Other Drugs on JAYPIRCA

Strong CYP3A Inhibitors

Pirtobrutinib is a CYP3A substrate. Concomitant use of JAYPIRCA with a strong CYP3A inhibitor increased pirtobrutinib systemic exposure [see *Clinical Pharmacology (12.3)*], which may increase the risk of JAYPIRCA adverse reactions. Avoid concomitant use of strong CYP3A inhibitors during treatment with JAYPIRCA. If concomitant use of strong CYP3A inhibitors is unavoidable, reduce the JAYPIRCA dosage [see *Dosage and Administration (2.4)*].

Strong or Moderate CYP3A Inducers

Concomitant use of JAYPIRCA with a strong or moderate CYP3A inducer decreased pirtobrutinib systemic exposure [see *Clinical Pharmacology (12.3)*], which may reduce JAYPIRCA efficacy. Avoid concomitant use of JAYPIRCA with strong or moderate CYP3A inducers. If concomitant use of moderate CYP3A inducers is unavoidable, increase the JAYPIRCA dosage [see *Dosage and Administration (2.5)*].

7.2 Effect of JAYPIRCA on Other Drugs

Sensitive CYP2C8, CYP2C19, CYP3A, P-gp, or BCRP Substrates

JAYPIRCA is a P-gp inhibitor, a moderate CYP2C8 and BCRP inhibitor, and a weak CYP2C19 and CYP3A inhibitor. Concomitant use of JAYPIRCA with sensitive P-gp, CYP2C8, BCRP, CYP2C19, or CYP3A substrates increased their plasma concentrations [see *Clinical Pharmacology (12.3)*], which may increase the risk of adverse reactions related to these substrates for drugs which are sensitive to minimal concentration changes. Follow recommendations for sensitive CYP2C8, CYP2C19, CYP3A, P-gp, or BCRP substrates provided in their approved product labeling.

8 USE IN SPECIFIC POPULATIONS

8.1 Pregnancy

Risk Summary

Based on findings from animal studies, JAYPIRCA can cause fetal harm when administered to a pregnant woman. There are no available data on JAYPIRCA use in pregnant women to evaluate for a drug-associated risk. In an animal reproduction study, administration of pirtobrutinib to pregnant rats during organogenesis resulted in adverse developmental outcomes, including structural abnormalities, altered fetal growth, and embryo-fetal mortality, at maternal exposures approximately 3-times those in patients at the recommended daily dose of 200 mg (see Data). Advise pregnant women of the potential risk to a fetus.

The background risk in the U.S. general population of major birth defects is 2% to 4% and of miscarriage is 15% to 20% of clinically recognized pregnancies.

Data

Animal Data

In an embryo-fetal development study in rats, pregnant animals were administered oral doses of pirtobrutinib at up to 500 mg/kg twice daily during the period of organogenesis. Doses \geq 375 mg/kg twice daily caused decreased fetal body weights and increased incidence of malformations and variations in the urinary tract (including absent or abnormal ureters and kidneys), reproductive tract (malpositioned ovaries and misshapen uterus), and bone (misshapen sternbrae). At 500 mg/kg twice daily, total resorption was observed. At 375 mg/kg twice daily in rats, the maternal systemic exposures (AUC) were approximately 3 times the human exposure at 200 mg once daily.

8.2 Lactation

Risk Summary

There are no data on the presence of pirtobrutinib in human milk or the effects on the breastfed child or milk production. Because of the potential for serious adverse reactions in the breastfed child, advise women not to breastfeed during treatment with JAYPIRCA and for one week after the last dose.

8.3 Females and Males of Reproductive Potential

Based on findings from animal studies, JAYPIRCA can cause fetal harm when administered to a pregnant woman [see *Use in Specific Populations (8.1)*].

Pregnancy Testing

Verify pregnancy status in females of reproductive potential prior to initiating JAYPIRCA.

Contraception

Females

Advise females of reproductive potential to use effective contraception during treatment with JAYPIRCA and for one week after the last dose.

8.4 Pediatric Use

Safety and effectiveness of JAYPIRCA have not been established in pediatric patients.

8.5 Geriatric Use

Of the patients with MCL who received the 200 mg dose of JAYPIRCA in BRUIN, 93 (78%) were 65 years of age and older and 39 (33%) were 75 years and older [see *Clinical Studies (14.1)*]. Clinical studies of JAYPIRCA did not include sufficient numbers of patients with MCL who were less than 65 years of age to determine whether older patients respond differently from younger adult patients. Of the patients with CLL/SLL who received the 200 mg once daily dose of JAYPIRCA in BRUIN, 68 (63%) were 65 years of age and older and 21 (19%) were 75 years and older [see *Clinical Studies (14.2)*]. No overall differences in effectiveness were observed between younger and older patients.

In the pooled safety population in patients with hematologic malignancies, 401 (68%) were 65 years of age and older, while 154 (26%) were 75 years of age and older. Patients aged 65 years and older experienced higher rates of Grade 3 and higher adverse reactions and serious adverse reactions compared to patients who were less than 65 years of age.

8.6 Renal Impairment

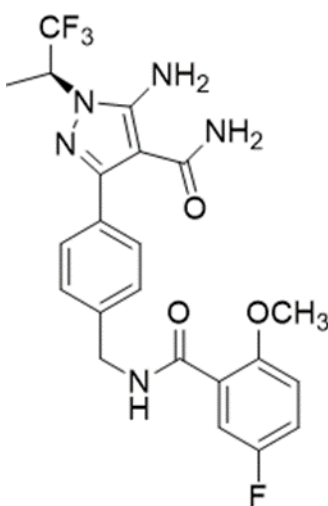
Severe renal impairment (eGFR 15-29 mL/min) increases pirtobrutinib exposure [see *Clinical Pharmacology* (12.3)]. Reduce the JAYPIRCA dosage in patients with severe renal impairment [see *Dosage and Administration* (2.3)]. No dosage adjustment of JAYPIRCA is recommended in patients with mild (60-89 mL/min) or moderate (30-59 mL/min) renal impairment.

8.7 Hepatic Impairment

No dosage adjustment of JAYPIRCA is recommended in patients with mild hepatic impairment (total bilirubin \leq upper limit of normal (ULN) and aspartate aminotransferase (AST) $>$ ULN or total bilirubin $>$ 1 to 1.5 \times ULN and any AST), moderate hepatic impairment (total bilirubin $>$ 1.5 to 3 \times ULN and any AST), or severe hepatic impairment (total bilirubin $>$ 3 \times ULN and any AST) [see *Clinical Pharmacology* (12.3)].

11 DESCRIPTION

Pirtobrutinib is a kinase inhibitor. It is an orally available, small molecule ATP-competitive inhibitor of BTK. The active pharmaceutical ingredient is pirtobrutinib with the molecular formula $C_{22}H_{21}F_4N_5O_3$ and a molecular weight of 479.44 g/mol. The chemical name for pirtobrutinib is 5-amino-3- $\{4-[(5\text{-fluoro-2-methoxybenzamido)methyl]phenyl\}$ -1- $[(2S)\text{-}1,1,1\text{-trifluoropropan-2-yl}]\text{-}1H\text{-pyrazole-4-carboxamide}$.



Pirtobrutinib is a white to practically white to yellow to brown solid. The aqueous solubility of pirtobrutinib is considered practically insoluble, or insoluble, across the pH 1 to pH 7 range.

Pirtobrutinib tablets are supplied as 50 mg or 100 mg film-coated, debossed tablets for oral administration. Each tablet contains inactive ingredients of croscarmellose sodium, hypromellose acetate succinate, lactose monohydrate, magnesium stearate, microcrystalline cellulose and silicon dioxide. The tablet film coating material contains FD&C Blue #2, hypromellose, titanium dioxide and triacetin.

12 CLINICAL PHARMACOLOGY

12.1 Mechanism of action

Pirtobrutinib is a small molecule, noncovalent inhibitor of BTK. BTK is a signaling protein of the B-cell antigen receptor (BCR) and cytokine receptor pathways. In B-cells, BTK signaling results in activation of pathways necessary for B-cell proliferation, trafficking, chemotaxis, and adhesion. Pirtobrutinib binds to wild type BTK and BTK harboring C481 mutations, leading to inhibition of BTK kinase activity. In nonclinical studies, pirtobrutinib inhibited BTK-mediated B-cell CD69 expression and inhibited malignant B-cell proliferation. Pirtobrutinib showed dose-dependent anti-tumor activities in BTK wild type and BTK C481S mutant mouse xenograft models.

12.2 Pharmacodynamics

At the recommended dosage of 200 mg once daily, pirtobrutinib trough concentrations exceeded the BTK IC_{96} . BTK occupancy is maintained throughout the dosing interval, regardless of the intrinsic rate of BTK turnover.

Cardiac Electrophysiology

The effect of a single 900 mg dose of pirtobrutinib (equivalent to approximately 2 times higher than the concentrations achieved at steady state at the recommended dosage of 200 mg once daily) on the QTc interval was evaluated in a placebo-controlled and positive-controlled study in 30 healthy subjects. Pirtobrutinib had no clinically meaningful effect on the change in QTcF interval (i.e., > 10 ms) and there was no relationship between pirtobrutinib exposure and change in QTc interval.

12.3 Pharmacokinetics

The pharmacokinetics of pirtobrutinib were characterized in healthy subjects and in patients with cancer. Pirtobrutinib exposure (AUC) and C_{max} increases proportionally following single oral doses ranging from 300 mg to 800 mg (1.5 to 4 times the approved recommended dosage) and once daily doses ranging from 25 – 300 mg (0.125 to 1.5 times the recommended dosage). Steady state was achieved within 5 days of once daily dosing, and the mean (CV%) accumulation ratio was 1.63 (26.7%) based on AUC after administration of 200 mg dosages.

Following administration of the recommended dosage, the geometric mean (CV%) steady-state AUC and C_{max} of pirtobrutinib were 90300 h*ng/mL (40%) and 6380 ng/mL (26%), respectively. The geometric mean (CV%) AUC₀₋₂₄ and C_{max} of pirtobrutinib on Cycle 1 Day 8 were 81800 h*ng/mL (66.6%) and 3670 ng/mL (89.5%), respectively.

Absorption

The absolute bioavailability of pirtobrutinib after a single oral 200 mg dose is 85.5% (range 75.9% to 90.9%). The median time (range) to reach peak plasma concentration (t_{max}) is approximately 2 hours (0.833 to 4.15 hours).

Effect of Food

No clinically significant differences in the pharmacokinetics of pirtobrutinib were observed following administration of a high-fat, high-calorie meal (approximately 800 to 1000 calories with 150 calories from protein, 250 calories from carbohydrate, and 500 to 600 calories from fat) to healthy subjects. A high-fat meal decreased the C_{max} of pirtobrutinib by 23% and delayed t_{max} by 1 hour. There was no effect on pirtobrutinib AUC.

Distribution

The mean apparent central volume of distribution of pirtobrutinib is 34.1 L. Human protein binding of pirtobrutinib is 96% and is independent of concentration in vitro. Mean blood-to-plasma ratio is 0.79.

Elimination

The effective half-life of pirtobrutinib is approximately 19 hours and the mean (CV%) apparent clearance is 2.05 L/h (37.2%).

Metabolism

Pirtobrutinib is primarily metabolized by CYP3A4 and direct glucuronidation by UGT1A8 and UGT1A9, in vitro.

Excretion

Following a single radiolabeled dose of pirtobrutinib 200 mg to healthy subjects, 37% of the dose was recovered in feces (18% unchanged) and 57% in urine (10% unchanged).

Specific Populations

There were no clinically significant differences in the pharmacokinetics of pirtobrutinib based on age (range 22 – 95 years), sex, race/ethnicity (White 84%, Asian 7%), body weight (range 35.7 – 152 kg), mild (total bilirubin \leq upper limit of normal (ULN) and aspartate aminotransferase (AST) > ULN or total bilirubin > 1 to 1.5 \times ULN and any AST), moderate (total bilirubin > 1.5 to 3 \times ULN and any AST), or severe (total bilirubin > 3 \times ULN and any AST) hepatic impairment. The effect of other races/ethnicities on the pharmacokinetics of pirtobrutinib is unknown.

Patients with Renal Impairment

Following a single 200 mg oral dose, the AUC of pirtobrutinib in subjects with severe renal impairment (eGFR 15-29 mL/min) increased by 62% and mean unbound AUC increased by 68% compared to healthy subjects with normal renal function. There were no clinically significant differences in the pharmacokinetics of pirtobrutinib in subjects with mild (eGFR 60-89 mL/min) or moderate renal impairment (eGFR 30-59 mL/min). The effect of renal impairment requiring dialysis on the pharmacokinetics of pirtobrutinib is unknown.

Drug Interaction Studies

Clinical Studies and Model-Informed Approaches

Strong CYP3A Inhibitors: Co-administration of a single 200 mg dose of pirtobrutinib with itraconazole (strong CYP3A inhibitor) increased AUC of pirtobrutinib by 49%.

Moderate CYP3A Inhibitors: Verapamil and diltiazem (moderate CYP3A inhibitors) are predicted to increase the AUC of pirtobrutinib by 30% and 20%, respectively.

Strong CYP3A inducers: Coadministration of a single 200 mg dose of pirtobrutinib with rifampin (strong CYP3A inducer) decreased the AUC of pirtobrutinib by 71%.

Moderate CYP3A Inducers: Efavirenz and bosentan (moderate CYP3A inducers) are predicted to decrease the AUC of pirtobrutinib by 49% and 27%, respectively.

Gastric Reducing Agents: No clinically significant differences in pirtobrutinib pharmacokinetics were observed when co-administered with omeprazole (a proton pump inhibitor).

P-glycoprotein (P-gp) inhibitors: No clinically significant differences in pirtobrutinib pharmacokinetics were observed when co-administered with itraconazole (P-gp inhibitor).

CYP3A Substrates: Pirtobrutinib increased the AUC and C_{max} of orally administered midazolam (sensitive CYP3A substrate) by 70% and 58%, respectively. Pirtobrutinib did not have a clinically meaningful effect on the exposure of intravenously administered midazolam.

CYP2C8 Substrates: Pirtobrutinib increased the AUC and C_{max} of repaglinide (sensitive CYP2C8 substrate) by 130% and 98%, respectively.

CYP2C19 Substrates: Pirtobrutinib increased the AUC and C_{max} of omeprazole (sensitive CYP2C19 substrate) by 56% and 49%, respectively.

P-gp Substrates: A single 200 mg dose of pirtobrutinib increased the AUC and C_{max} of digoxin (sensitive P-gp substrate) by 17% and 51%, respectively. Multiple doses of pirtobrutinib (200 mg daily) further increased the AUC and C_{max} of digoxin (sensitive P-gp substrate) up to 35% and 55%, respectively.

BCRP Substrates: Multiple doses of pirtobrutinib (200 mg daily) increased the AUC and C_{max} of rosuvastatin (sensitive BCRP substrate) by 140% and 146%, respectively.

CYP1A2 and CYP2C9 Substrates: Pirtobrutinib did not have a clinically meaningful effect on the exposures of caffeine (sensitive CYP1A2 substrate) or S-warfarin (moderate sensitive CYP2C9 substrate).

In Vitro Studies

Cytochrome P450 (CYP) Enzymes: Pirtobrutinib inhibits CYP2C8, CYP2C9, CYP3A, CYP1A2, CYP2B6, CYP2C19, and CYP2D6. Pirtobrutinib induces CYP3A4, CYP3A5, CYP2B6, and CYP2C19.

Transporter Systems: Pirtobrutinib inhibits P-gp and BCRP, but not OAT1, OAT3, OCT1, OCT2, OATP1B1, OATP1B3, MATE1, or MATE2-K. Pirtobrutinib is not a substrate of the hepatic transporters. Pirtobrutinib is a substrate of P-gp and BCRP, but not OCT1, OATP1B1, OATP1B3, or BSEP.

13 NONCLINICAL TOXICOLOGY

13.1 Carcinogenesis, mutagenesis, impairment of fertility

Carcinogenicity studies have not been conducted with pirtobrutinib.

Pirtobrutinib was not mutagenic in a bacterial mutagenicity (Ames) assay. Pirtobrutinib was aneugenic in *in vitro* micronucleus assays using human peripheral blood lymphocytes. Pirtobrutinib was not genotoxic in an *in vivo* rat bone marrow micronucleus assay at doses up to 2000 mg/kg.

Studies to assess the effects of pirtobrutinib on fertility have not been conducted. In repeat-dose toxicity studies of up to 3-months duration conducted with pirtobrutinib in rats and dogs, no effects on male or female reproductive organs were identified.

14 CLINICAL STUDIES

14.1 Mantle Cell Lymphoma

The efficacy of JAYPIRCA in patients with MCL was evaluated in BRUIN [NCT03740529], an open-label, international, multicohort, single-arm study of JAYPIRCA as monotherapy. Efficacy was based on 120 patients with MCL treated with JAYPIRCA who were previously treated with a BTK inhibitor. JAYPIRCA was given orally at a dose of 200 mg once daily and was continued until disease progression or unacceptable toxicity. Patients with active central nervous system lymphoma or allogeneic hematopoietic stem cell transplantation (HSCT) or CAR-T cell therapy within 60 days were excluded.

The median age was 71 years (range: 46 to 88 years); 79% were male; 78% were White, 14% Asian, 1.7% Black or African American. Seventy-eight percent of patients had the classic/leukemic variant of MCL, 12% had pleomorphic MCL, and 11% had blastoid MCL. The simplified Mantle Cell Lymphoma International Prognostic Index (sMIPI) score was low in 15%, intermediate in 59%, and high in 26% of patients. Patients received a median number of 3 prior lines of therapy

(range: 1 to 9) with 93% having received 2 or more prior lines. All received 1 or more prior lines of therapy containing a BTK inhibitor; other prior therapies included chemoimmunotherapy in 88%, HSCT in 20%, lenalidomide in 18%, and CAR-T therapy in 9%. The most common prior BTK inhibitors received were ibrutinib (67%), acalabrutinib (30%), and zanubrutinib (8%). Patients may have received more than one prior BTK inhibitor; 83% of patients discontinued the last BTK inhibitor for refractory or progressive disease, 10% discontinued for toxicity, and 5% discontinued for other reasons.

Efficacy was based on overall response rate (ORR) and duration of response (DOR), as assessed by an independent review committee (IRC) using 2014 Lugano criteria. Efficacy results are shown in Table 6. Additionally, the Kaplan-Meier estimate for the DOR rate at 6 months was 65.3% (95% CI: 49.8, 77.1).

Table 6: Efficacy Results per IRC in Patients with MCL Previously Treated with a BTK Inhibitor

Outcome	JAYPIRCA 200 mg once daily (N = 120)
Overall Response Rate ^{a,b}	
ORR, n	60 (50%)
(95% CI, %)	41, 59
CR, n	15 (13%)
PR, n	45 (38%)
Time to Response	
Median (range), months	1.8 (0.8, 4.2)
Duration of Response ^c	
Number censored, n	36
Median DOR, months (95% CI)	8.3 (5.7, NE)

CI, confidence interval; CR, complete response; DOR, duration of response; PR, partial response; NE, not estimable.

^a PET-CT scans were utilized in response assessments (in 41% of patients), with the remainder being assessed by CT scans only.

^b ORR using CT scan-based assessments in all patients was 48% (95% CI: 38, 57) and CR rate was 13%.

^c Based on Kaplan-Meier estimation. Estimated median follow-up was 7.3 months.

14.2 Chronic Lymphocytic Leukemia/Small Lymphocytic Lymphoma

The efficacy of JAYPIRCA in patients with CLL/SLL was evaluated in BRUIN [NCT03740529], an open-label, international, single-arm, multicohort study of JAYPIRCA as monotherapy. Efficacy was based on 108 patients with CLL/SLL treated with JAYPIRCA who were previously treated with at least two prior lines of therapy, including a BTK inhibitor and a BCL-2 inhibitor. JAYPIRCA was given orally at a dose of 200 mg once daily and was continued until disease progression or unacceptable toxicity. The trial required a platelet count $\geq 50 \times 10^9/L$, absolute neutrophil count $\geq 0.75 \times 10^9/L$, hepatic transaminases ≤ 2.5 times upper limit of normal (ULN), and an ECOG performance status of 0 to 2. The trial excluded patients with significant cardiovascular disease, major bleeding, uncontrolled or symptomatic arrhythmias, prolonged QTc interval, or need for a strong CYP3A inhibitor or inducer or strong P-gp inhibitor. Patients with active central nervous system (CNS) involvement by lymphoma or allogeneic hematopoietic stem cell transplantation (HSCT) within 60 days were excluded.

The median age was 68 years (range: 41 to 88 years); 69% were male; 89% were White, 4.6% Black or African American, 1.9% Asian and 1.9% were Hispanic or Latino. Baseline ECOG performance status was 0 or 1 in 91% of patients and 48% of patients had Rai stage III or IV disease. Among those patients with central testing available, 42% (37 of 88 patients) had a C481 BTK mutation, 54% (43 of 79 patients) had 17p deletion and/or TP53 mutation, 93% (77 of 83 patients) had unmutated IGHV, and 22% (16 of 72 patients) had 11q deletion. Patients received a median number of 5 prior lines of therapy (range: 2 to 11). The most common prior BTK inhibitors received were ibrutinib (97%), acalabrutinib (9%), and zanubrutinib (0.9%). Seventy-seven percent of patients discontinued the last BTK inhibitor for refractory or progressive disease, 13% discontinued for toxicity, and 10% discontinued for other reasons.

Efficacy was established based on overall response rate (ORR) and duration of response (DOR), as assessed by an independent review committee (IRC) using 2018 iwCLL criteria. Efficacy results are shown in Table 7. The median time to response was 3.7 months (range: 1.7, 27.9 months).

Table 7: Efficacy Results per IRC in Patients with CLL/SLL Previously Treated with a BTK Inhibitor and a BCL-2 inhibitor

Outcome	JAYPIRCA 200 mg once daily (N = 108)
Overall Response Rate	
ORR, n	78 (72%)
(95% CI, %)	63, 80
PR, n	78 (72%)
Duration of Response^a	
Median DOR, months (95% CI)	12.2 (9.3, 14.7)

CI, confidence interval; PR, partial response.

^aBased on Kaplan-Meier estimation. Estimated median follow-up was 15.7 months.

16 HOW SUPPLIED/STORAGE AND HANDLING

How Supplied

JAYPIRCA tablets are supplied as follows:

Tablet Strength	Description	Package Configuration	NDC Number
50 mg	Blue, film coated, arc-triangle shaped tablets debossed with “Lilly 50” on one side and “6902” on the other side.	Bottle with child-resistant closure. Each bottle contains 30 tablets.	0002-6902-30
100 mg	Blue, film coated, round tablets debossed with “Lilly 100” on one side and “7026” on the other side.	Bottle with child-resistant closure. Each bottle contains 60 tablets.	0002-7026-60

Storage and Handling

Store JAYPIRCA tablets at room temperature 20°C to 25°C (68°F to 77°F); excursions permitted between 15°C and 30°C (59°F and 86°F) ([see USP Controlled Room Temperature]).

17 PATIENT COUNSELING INFORMATION

Advise the patient to read the FDA-approved patient labeling (Patient Information).

Infections

Advise patients that JAYPIRCA can cause serious infections that may be fatal. Advise patients to report any signs or symptoms of infection (e.g., fever, chills, weakness) [see Warnings and Precautions (5.1)].

Hemorrhage

Inform patients to report signs or symptoms of bleeding. Inform patients that JAYPIRCA may need to be interrupted for major surgeries [see Warnings and Precautions (5.2)].

Cytopenias

Advise patients of the need for periodic monitoring of blood counts during treatment with JAYPIRCA [see *Warnings and Precautions (5.3)*].

Cardiac Arrhythmias

Counsel patients to report any signs of palpitations, dizziness, fainting, chest discomfort, and shortness of breath [see *Warnings and Precautions (5.4)*].

Second Primary Malignancies

Inform patients that other malignancies have been reported in patients who have been treated with JAYPIRCA, including skin cancer and other solid tumors. Advise patients to use sun protection and to have monitoring for development of other cancers [see *Warnings and Precautions (5.5)*].

Embryo-Fetal Toxicity

Advise pregnant women and females of reproductive potential of the potential risk to a fetus. Advise females of reproductive potential to inform their healthcare provider of a known or suspected pregnancy [see *Warnings and Precautions (5.6)*, *Use in Specific Populations (8.1, 8.3)*].

Advise females of reproductive potential to use effective contraception during treatment with JAYPIRCA and for one week after the last dose [see *Use in Specific Populations (8.3)*].

Lactation

Advise women not to breastfeed during treatment with JAYPIRCA and for one week after the last dose [see *Use in Specific Populations (8.2)*].

Administration

Inform patients to take JAYPIRCA orally once daily at approximately the same time each day with or without food and how to make up a missed dose. Advise patients to swallow tablets whole with water. Advise patients not to cut, crush, or chew tablets [see *Dosage and Administration (2.1)*].

Marketed by: Lilly USA, LLC, Indianapolis, IN 46285, USA

Copyright © 2023, Eli Lilly and Company. All rights reserved.

JAY-0002-USPI-202312DD

PATIENT INFORMATION
JAYPIRCA™ (JAY-PIHR-KAA)
pirtobrutinib
tablets

What is JAYPIRCA?

JAYPIRCA is a prescription medicine used to treat adults with:

- mantle cell lymphoma (MCL) that has come back or did not respond to previous treatment and who have already received at least 2 treatments for their cancer, including a Bruton tyrosine kinase (BTK) inhibitor medicine.
- chronic lymphocytic leukemia (CLL) or small lymphocytic lymphoma (SLL) who have already received at least 2 treatments for their cancer, including a BTK inhibitor medicine and a B-cell lymphoma 2 (BCL-2) inhibitor medicine.

It is not known if JAYPIRCA is safe and effective in children.

Before taking JAYPIRCA, tell your healthcare provider about all of your medical conditions, including if you:

- have an infection or have been advised that you are at increased risk of infection
- have had recent surgery or plan to have surgery. Your healthcare provider may stop JAYPIRCA for any planned medical, surgical, or dental procedure.
- have bleeding problems or are taking a blood thinner medicine
- have or had heart rhythm problems
- have high blood pressure
- have a history of other cancers including skin cancer
- have kidney problems
- are pregnant or plan to become pregnant. JAYPIRCA can harm your unborn baby.

Females who are able to become pregnant:

- Your healthcare provider will do a pregnancy test before starting treatment with JAYPIRCA.
- You should use effective birth control (contraception) during treatment with JAYPIRCA and for 1 week after your last dose of JAYPIRCA.
- Tell your healthcare provider right away if you become pregnant or think you are pregnant during treatment with JAYPIRCA.
- are breastfeeding or plan to breastfeed. It is not known if JAYPIRCA passes into your breast milk. Do not breastfeed during treatment with JAYPIRCA and for 1 week after your last dose of JAYPIRCA.

Tell your healthcare provider about all the medicines you take, including prescription and over-the-counter medicines, vitamins, and herbal supplements. Taking JAYPIRCA with certain other medicines may affect how JAYPIRCA or the other medicines work and can cause side effects.

How should I take JAYPIRCA?

- Take JAYPIRCA exactly as your healthcare provider tells you.
- Do not change your dose or stop taking JAYPIRCA unless your healthcare provider tells you to do so.
- Take JAYPIRCA tablets 1 time each day at about the same time each day.
- Take JAYPIRCA with or without food.
- Swallow JAYPIRCA tablets whole with water. Do not cut, crush, or chew the tablets.
- If you miss a dose of JAYPIRCA, take it as soon as you remember on the same day. If it has been more than 12 hours from the time you usually take JAYPIRCA, skip the missed dose, and take your next dose on the next day at your usual time.

What are the possible side effects of JAYPIRCA?

JAYPIRCA can cause serious side effects, including:

- **Infections** can happen during treatment with JAYPIRCA. These infections can be serious and may lead to death. Your healthcare provider may prescribe vaccines and certain medicines if you have an increased risk of getting infections. Tell your healthcare provider right away if you develop fever, chills, weakness, flu-like symptoms, or any other signs of infection during treatment with JAYPIRCA.
- **Bleeding problems (hemorrhage)** can happen during treatment with JAYPIRCA and can be serious and may lead to death. Your risk of severe bleeding may increase if you are also taking a blood thinner medicine. Tell your healthcare provider if you develop any signs or symptoms of bleeding, including:
 - blood in your stools or black stools (looks like tar)
 - pink or brown urine
 - unexpected bleeding, or bleeding that is severe or you cannot control
 - vomit blood or vomit blood that looks like coffee grinds
 - cough up blood or blood clots
 - increased bruising
 - dizziness
 - weakness
 - confusion
 - changes in your speech
 - headache that lasts a long time

- **Decrease in blood cell counts.** Decrease in blood cell counts (white blood cells, platelets, and red blood cells) are common with JAYPIRCA, but can also be severe. This may increase your risk of infection, bleeding, and anemia. Your healthcare provider should do blood tests to check your blood counts regularly during treatment with JAYPIRCA.
- **Heart rhythm problems.** Heart rhythm problems including atrial fibrillation and atrial flutter have happened in people treated with JAYPIRCA. Your risk for heart rhythm problems may be increased if you have high blood pressure or have had heart rhythm problems in the past. Tell your healthcare provider if you develop any of the following signs or symptoms:
 - fast or irregular heartbeat (palpitations)
 - chest discomfort
 - dizziness
 - shortness of breath
 - fainting
- **Second primary cancers.** New cancers have happened in people during treatment with JAYPIRCA, including cancers of the skin or other organs. Your healthcare provider will check you for other cancers during treatment with JAYPIRCA. Use sun protection when you are outside in sunlight.

Your healthcare provider may decrease your dose, temporarily stop, or permanently stop treatment with JAYPIRCA if you develop severe side effects.

The most common side effects of JAYPIRCA include:

- tiredness
- muscle, joint, and bone pain
- diarrhea
- COVID-19
- bruising
- cough

These are not all the possible side effects of JAYPIRCA.

Call your doctor for medical advice about side effects. You may report side effects to FDA at 1-800-FDA-1088.

How should I store JAYPIRCA?

- Store JAYPIRCA at room temperature between 68°F to 77°F (20°C to 25°C).
- JAYPIRCA comes in a bottle with a child-resistant cap.

Keep JAYPIRCA and all medicines out of the reach of children.

General information about the safe and effective use of JAYPIRCA.

Medicines are sometimes prescribed for purposes other than those listed in a Patient Information leaflet. Do not use JAYPIRCA for a condition for which it was not prescribed. Do not give JAYPIRCA to other people, even if they have the same symptoms that you have. It may harm them. You can ask your pharmacist or healthcare provider for information about JAYPIRCA that is written for health professionals.

What are the ingredients in JAYPIRCA?

Active ingredient: pirtobrutinib

Inactive ingredients: croscarmellose sodium, hypromellose acetate succinate, lactose monohydrate, magnesium stearate, microcrystalline cellulose, and silicon dioxide. The tablet film coating contains FD&C Blue #2, hypromellose, titanium dioxide, and triacetin.

Marketed by Lilly USA, LLC, Indianapolis, IN 46285, USA

JAYPIRCA is a trademark of Eli Lilly and Company.
Copyright © 2023, Eli Lilly and Company. All rights reserved.
JAY-0002-PPI-202312DD

For more information, go to www.jaypirca.com or call 1-800-LillyRx (1-800-545-5979).

This Patient Information has been approved by the U.S. Food and Drug Administration.

Revised: 12/2023