

HIGHLIGHTS OF PRESCRIBING INFORMATION

These highlights do not include all the information needed to use LYTGObI safely and effectively. See full prescribing information for LYTGObI.

LYTGObI® (futibatinib) tablets, for oral use

Initial U.S. Approval: 2022

INDICATIONS AND USAGE

LYTGObI is a kinase inhibitor indicated for the treatment of adult patients with previously treated, unresectable, locally advanced or metastatic intrahepatic cholangiocarcinoma harboring fibroblast growth factor receptor 2 (FGFR2) gene fusions or other rearrangements. (1, 2.1)

This indication is approved under accelerated approval based on overall response rate and duration of response. Continued approval for this indication may be contingent upon verification and description of clinical benefit in a confirmatory trial(s). (1)

DOSAGE AND ADMINISTRATION

- Confirm the presence of an FGFR2 gene fusion or other rearrangement prior to initiation of treatment with LYTGObI. (2.1)
- Recommended dose is 20 mg orally (five 4 mg tablets) once daily until disease progression or unacceptable toxicity occurs. (2.2)
- Swallow tablet whole, with or without food. (2.2)

DOSAGE FORMS AND STRENGTHS

Tablets: 4 mg (3)

CONTRAINDICATIONS

None (4)

WARNINGS AND PRECAUTIONS

- Ocular Toxicity: LYTGObI can cause retinal pigment epithelial detachment (RPED). Perform a comprehensive ophthalmological examination including optical coherence tomography (OCT) prior to initiation of therapy, every 2 months for the first 6 months, and every 3 months thereafter and urgently at any time for visual symptoms. (2.3, 5.1)
- Hyperphosphatemia and Soft Tissue Mineralization: Increases in phosphate levels can cause hyperphosphatemia leading to soft tissue mineralization, calcinosis, nonuremic calciphylaxis and vascular calcification. Monitor for

hyperphosphatemia and withhold, reduce the dose, or permanently discontinue based on duration and severity of hyperphosphatemia. (2.3, 5.2)

- Embryo-Fetal Toxicity: Can cause fetal harm. Advise patients of reproductive potential of the potential risk to the fetus and to use effective contraception. (5.3, 8.1, 8.3)

ADVERSE REACTIONS

- Most common ($\geq 20\%$) adverse reactions were nail toxicity, musculoskeletal pain, constipation, diarrhea, fatigue, dry mouth, alopecia, stomatitis, abdominal pain, dry skin, arthralgia, dysgeusia, dry eye, nausea, decreased appetite, urinary tract infection, palmar-plantar erythrodysesthesia syndrome, and vomiting. (6.1)
- Most common laboratory abnormalities ($\geq 20\%$) were increased phosphate, increased creatinine, decreased hemoglobin, increased glucose, increased calcium, decreased sodium, decreased phosphate, increased alanine aminotransferase, increased alkaline phosphatase, decreased lymphocytes, increased aspartate aminotransferase, decreased platelets, increased activated partial thromboplastin time, decreased leukocytes, decreased albumin, decreased neutrophils, increased creatine kinase, increased bilirubin, decreased glucose, increased prothrombin international normalized ratio, and decreased potassium. (6.1)

To report SUSPECTED ADVERSE REACTIONS, contact Taiho Oncology Inc. at 1-844-878-2446 or FDA at 1-800-FDA-1088 or <http://www.fda.gov/medwatch>.

DRUG INTERACTIONS

- Dual P-gp and strong CYP3A inhibitors: Avoid coadministration. (7.1)
- Dual P-gp and strong CYP3A inducers: Avoid coadministration. (7.1)

USE IN SPECIFIC POPULATIONS

- Lactation: Advise not to breastfeed. (8.2)

See 17 for PATIENT COUNSELING INFORMATION and FDA-approved patient labeling.

Revised: 09/2022

FULL PRESCRIBING INFORMATION: CONTENTS*

1 INDICATIONS AND USAGE

2 DOSAGE AND ADMINISTRATION

- 2.1 Patient Selection
- 2.2 Recommended Dosage
- 2.3 Dosage Modification for Adverse Reactions

3 DOSAGE FORMS AND STRENGTHS

4 CONTRAINDICATIONS

5 WARNINGS AND PRECAUTIONS

- 5.1 Ocular Toxicity
- 5.2 Hyperphosphatemia and Soft Tissue Mineralization
- 5.3 Embryo-Fetal Toxicity

6 ADVERSE REACTIONS

- 6.1 Clinical Trials Experience

7 DRUG INTERACTIONS

- 7.1 Effect of Other Drugs on LYTGObI
- 7.2 Effect of LYTGObI on Other drugs

8 USE IN SPECIFIC POPULATIONS

- 8.1 Pregnancy

8.2 Lactation

8.3 Females and Males of Reproductive Potential

8.4 Pediatric Use

8.5 Geriatric Use

11 DESCRIPTION

12 CLINICAL PHARMACOLOGY

- 12.1 Mechanism of Action
- 12.2 Pharmacodynamics
- 12.3 Pharmacokinetics

13 NONCLINICAL TOXICOLOGY

- 13.1 Carcinogenesis, Mutagenesis, Impairment of Fertility

14 CLINICAL STUDIES

- 14.1 Cholangiocarcinoma

16 HOW SUPPLIED/STORAGE AND HANDLING

17 PATIENT COUNSELING INFORMATION

* Sections or subsections omitted from the full prescribing information are not listed

FULL PRESCRIBING INFORMATION

1 INDICATIONS AND USAGE

LYTGOBI is indicated for the treatment of adult patients with previously treated, unresectable, locally advanced or metastatic intrahepatic cholangiocarcinoma harboring fibroblast growth factor receptor 2 (FGFR2) gene fusions or other rearrangements [see *Dosage and Administration (2.1)*].

This indication is approved under accelerated approval based on overall response rate and duration of response [see *Clinical Studies (14.1)*]. Continued approval for this indication may be contingent upon verification and description of clinical benefit in a confirmatory trial(s).

2 DOSAGE AND ADMINISTRATION

2.1 Patient Selection

Select patients for the treatment of unresectable, locally advanced or metastatic intrahepatic cholangiocarcinoma with LYTGOBI based on the presence of an FGFR2 gene fusion or rearrangement [see *Clinical Studies (14.1)*]. An FDA-approved test for detection of FGFR2 gene fusions or other rearrangements in patients with unresectable, locally advanced, or metastatic intrahepatic cholangiocarcinoma for selecting patients for treatment with LYTGOBI is not available.

2.2 Recommended Dosage

The recommended dosage of LYTGOBI is 20 mg (five 4 mg tablets) taken orally once daily until disease progression or unacceptable toxicity occurs.

Take LYTGOBI with or without food at approximately the same time each day [see *Clinical Pharmacology (12.3)*].

Swallow tablets whole. Do not crush, chew, split, or dissolve tablets.

If the patient misses a dose of LYTGOBI for more than 12 hours or if vomiting occurs, resume dosing with the next scheduled dose.

2.3 Dosage Modification for Adverse Reactions

The recommended dose reductions for adverse reactions are provided in [Table 1](#).

Table 1: Recommended Dose Reductions for LYTGOBI for Adverse Reactions

Dose Reduction	Recommended Dosage
First dose reduction	16 mg (four 4 mg tablets) orally once daily
Second dose reduction*	12 mg (three 4 mg tablets) orally once daily

*Permanently discontinue LYTGOBI if unable to tolerate 12 mg orally once daily.

Recommended dosage modifications for adverse reactions are provided in [Table 2](#).

Table 2: Recommended Dosage Modifications for LYTGOBI Adverse Reactions

Adverse Reaction	Severity	LYTGOBI Dosage Modifications
Retinal Pigment Epithelial Detachment (RPED) [<i>see Warnings and Precautions (5.1)</i>]	Not applicable	Continue LYTGOBI at the current dose and continue periodic ophthalmic evaluation: <ul style="list-style-type: none"> • If resolving within 14 days, continue LYTGOBI at the current dose. • If not resolving within 14 days, withhold LYTGOBI until resolving; then resume LYTGOBI at previous or a lower dose.
Hyperphosphatemia [<i>see Warnings and Precautions (5.2)</i>]	Serum phosphate $\geq 5.5 - \leq 7$ mg/dL	Continue LYTGOBI at the current dose and initiate phosphate lowering therapy. Monitor serum phosphate weekly.
	Serum phosphate $>7 - \leq 10$ mg/dL	<ul style="list-style-type: none"> • Initiate or adjust phosphate lowering therapy. Monitor serum phosphate weekly and • Dose reduce LYTGOBI to next lower dose <ul style="list-style-type: none"> – If the serum phosphate resolves to ≤ 7 mg/dL within 2 weeks after dose reduction, continue at this reduced dose. – If serum phosphate is not ≤ 7 mg/dL within 2 weeks, further reduce LYTGOBI to the next lower dose. – If serum phosphate is not ≤ 7 mg/dL within 2 weeks after the second dose reduction, withhold LYTGOBI until serum phosphate is ≤ 7 mg/dL and resume at the dose prior to suspending.
	Serum phosphate >10 mg/dL	<ul style="list-style-type: none"> • Initiate or adjust phosphate lowering therapy and monitor serum phosphate weekly and • Withhold LYTGOBI until phosphate is ≤ 7 mg/dL and resume LYTGOBI at the next lower dose. <ul style="list-style-type: none"> – Permanently discontinue LYTGOBI if serum phosphate is not ≤ 7 mg/dL within 2 weeks following 2 dose interruptions and reductions.
Other Adverse Reactions	Grade 3 ^a	<ul style="list-style-type: none"> • Withhold LYTGOBI until toxicity resolves to Grade 1 or baseline, then resume LYTGOBI <ul style="list-style-type: none"> – for hematological toxicities resolving within 1 week, at the dose prior to suspending. – for other adverse reactions, at next lower dose.
	Grade 4 ^a	Permanently discontinue LYTGOBI

^a Severity as defined by National Cancer Institute Common Terminology Criteria for Adverse Events (NCI CTCAE version 4.03).

3 DOSAGE FORMS AND STRENGTHS

Tablets: 4 mg, round, white, film-coated tablets debossed with “4MG” on one side, and “FBN” on the other side.

4 CONTRAINDICATIONS

None.

5 WARNINGS AND PRECAUTIONS

5.1 Ocular Toxicity

Retinal Pigment Epithelial Detachment (RPED)

LYTGOBI can cause RPED, which may cause symptoms such as blurred vision.

Among 318 patients who received LYTGOBI across clinical trials [see *Adverse Reactions (6.1)*] where ophthalmologic monitoring did not routinely include optical coherence tomography (OCT), RPED occurred in 9% of patients. The median time to first onset of RPED was 40 days. RPED led to dose interruption of LYTGOBI in 1.3% of patients, dose reduction in 1.6% of patients, and permanent discontinuation in 0.3% of patients.

Perform a comprehensive ophthalmological examination, including OCT of the macula, prior to initiation of therapy, every 2 months for the first 6 months, and every 3 months thereafter. For onset of visual symptoms, refer patients for ophthalmologic evaluation urgently, with follow-up every 3 weeks until resolution or discontinuation of LYTGOBI.

Withhold or reduce the dose of LYTGOBI as recommended [see *Dosage and Administration (2.3)*].

Dry Eye/Corneal Keratitis

Among 318 patients who received LYTGOBI across clinical trials [see *Adverse Reactions (6.1)*], dry eye occurred in 15% of patients. Treat patients with ocular demulcents as needed.

5.2 Hyperphosphatemia and Soft Tissue Mineralization

LYTGOBI can cause hyperphosphatemia leading to soft tissue mineralization, calcinosis, nonuremic calciphylaxis, and vascular calcification. Increases in phosphate levels are a pharmacodynamic effect of LYTGOBI [see *Clinical Pharmacology (12.2)*]. Among 318 patients who received LYTGOBI across clinical trials [see *Adverse Reactions (6.1)*], hyperphosphatemia was reported in 88% of patients based on laboratory values above the upper limit of normal. The median time to onset of hyperphosphatemia was 5 days (range 3-117). Phosphate binders were received by 77% of patients who received LYTGOBI.

Monitor for hyperphosphatemia throughout treatment. Initiate a low phosphate diet and phosphate lowering therapy when serum phosphate level is ≥ 5.5 mg/dL. For serum phosphate levels >7 mg/dL, initiate or intensify phosphate lowering therapy and dose reduce, withhold, or permanently discontinue LYTGOBI based on duration and severity of hyperphosphatemia [see *Dosage and Administration (2.3)*].

5.3 Embryo-Fetal Toxicity

Based on findings in an animal study and its mechanism of action, LYTGOBI can cause fetal harm when administered to a pregnant woman. Oral administration of futibatnib to pregnant rats during the period of organogenesis caused fetal malformations, fetal growth retardation, and embryo-fetal death at maternal exposures lower than the human exposure at the clinical dose of 20 mg based on area under the curve (AUC).

Advise pregnant women of the potential risk to the fetus. Advise female patients of reproductive potential to use effective contraception during treatment with LYTGObI and for 1 week after the last dose of LYTGObI. Advise males with female partners of reproductive potential to use effective contraception during treatment with LYTGObI and for 1 week after the last dose [see *Use in Specific Populations (8.1, 8.3)*].

6 ADVERSE REACTIONS

The following adverse reactions are discussed elsewhere in the labeling:

- Ocular Toxicity [see *Warnings and Precautions (5.1)*]
- Hyperphosphatemia and Soft Tissue Mineralization [see *Warnings and Precautions (5.2)*]

6.1 Clinical Trials Experience

Because clinical trials are conducted under widely varying conditions, adverse reaction rates observed in the clinical trials of a drug cannot be directly compared to rates in the clinical trials of another drug and may not reflect the rates observed in practice.

The pooled safety population described in the WARNINGS AND PRECAUTIONS reflect exposure to LYTGObI as a single agent at 20 mg orally once daily in 318 patients including 145 patients with cholangiocarcinoma and 173 patients with other advanced solid tumors. Among 318 patients who received LYTGObI, 37% were exposed for 6 months or longer and 13% were exposed for greater than 12 months.

Previously Treated, Unresectable Locally Advanced or Metastatic Intrahepatic Cholangiocarcinoma

The safety of LYTGObI was evaluated in Study TAS-120-101, which included 103 patients with previously treated, unresectable locally advanced or metastatic intrahepatic cholangiocarcinoma harboring FGFR2 fusions or other gene rearrangements [see *Clinical Studies (14.1)*]. Patients were treated with LYTGObI 20 mg orally once daily until disease progression or unacceptable toxicity. The median duration of treatment was 9 months (range: 0.5 - 25 months).

Serious adverse reactions occurred in 39% of patients receiving LYTGObI. Serious adverse reactions in $\geq 2\%$ of patients who received LYTGObI included pyrexia (3.9%), gastrointestinal hemorrhage (3.9%), ascites (2.9%), musculoskeletal pain (2.9%), and bile duct obstruction (2.9%).

Permanent discontinuation due to an adverse reaction occurred in 4.9% of patients who received LYTGObI. Adverse reactions requiring permanent discontinuation of LYTGObI in one patient each were esophagitis, oral dysesthesia, bile duct obstruction, dizziness, and anemia.

Dosage interruptions due to an adverse reaction occurred in 66% of patients who received LYTGObI. Adverse reactions requiring dosage interruption in $\geq 5\%$ of patients included hyperphosphatemia, palmar-plantar erythrodysesthesia syndrome, increased alanine aminotransferase, increased aspartate aminotransferase, and fatigue.

Dose reductions due to an adverse reaction occurred in 58% of patients who received LYTGObI. Adverse reactions requiring dosage reductions in $\geq 2\%$ of patients who received LYTGObI included hyperphosphatemia, palmar-plantar erythrodysesthesia syndrome, fatigue, increased alanine aminotransferase, increased aspartate aminotransferase, nail toxicity, and stomatitis.

The most common ($\geq 20\%$) adverse reactions were nail toxicity, musculoskeletal pain, constipation, diarrhea, fatigue, dry mouth, alopecia, stomatitis, abdominal pain, dry skin, arthralgia, dysgeusia, dry eye, nausea,

decreased appetite, urinary tract infection, palmar-plantar erythrodysesthesia syndrome, and vomiting.

The most common laboratory abnormalities ($\geq 20\%$) were increased phosphate, increased creatinine, decreased hemoglobin, increased glucose, increased calcium, decreased sodium, decreased phosphate, increased alanine aminotransferase, increased alkaline phosphatase, decreased lymphocyte, increased aspartate aminotransferase, decreased platelets, increased activated partial thromboplastin time, decreased leukocytes, decreased albumin, decreased neutrophils, increased creatine kinase, increased bilirubin, decreased glucose, increased prothrombin international normalized ratio, and decreased potassium.

Table 3 summarizes the adverse reactions in TAS-120-101. Table 4 summarizes laboratory abnormalities in TAS-120-101.

Table 3: Adverse Reactions ($\geq 15\%$) in Patients Receiving LYTGOBI in Study TAS-120-101

Adverse Reaction	LYTGOBI N = 103	
	All Grades ^a (%)	Grade 3 (%)
Skin and subcutaneous tissue disorders		
Nail toxicity ^b	47	1.9
Alopecia	34	0
Dry skin	29	0
Palmar-plantar erythrodysesthesia syndrome	21	4.9
Gastrointestinal disorders		
Constipation	39	0
Diarrhea ^c	39	1
Dry mouth	35	0
Stomatitis ^d	30	6
Abdominal pain ^e	30	2.9
Nausea	24	1.9
Vomiting ^f	20	1
General disorders		
Fatigue ^g	37	8
Metabolism and nutrition disorders		
Decreased appetite	23	2.9
Musculoskeletal and connective tissue disorder		
Musculoskeletal pain ^h	43	3.9
Arthralgia ⁱ	25	0
Eye disorders		
Dry eye ^j	25	1
Nervous system disorders		
Dysgeusia ^k	25	0
Infections		
Urinary tract infection ^l	23	2.9

	LYTGOBI N = 103	
Adverse Reaction	All Grades ^a (%)	Grade 3 (%)
Investigations		
Weight decreased	18	3.9

^a Graded per NCI CTCAE4.03.

^b Includes nail toxicity, nail disorder, nail discoloration, nail dystrophy, nail hypertrophy, nail infection, nail pigmentation, onychalgia, onychoclasia, onycholysis, onychomadesis, onychomycosis, and paronychia.

^c Includes diarrhea, colitis, and gastroenteritis.

^d Includes stomatitis, glossitis, mouth ulceration, mucosal inflammation, pharyngeal inflammation, and tongue ulceration.

^e Includes abdominal pain, abdominal discomfort, abdominal pain upper, gastrointestinal pain, and hepatic pain.

^f Includes vomiting and hematemesis.

^g Includes fatigue and asthenia.

^h Includes back pain, bone pain, musculoskeletal chest pain, musculoskeletal discomfort, musculoskeletal pain, musculoskeletal stiffness, myalgia, neck pain, non-cardiac chest pain, pain in extremity, and spinal pain.

ⁱ Includes arthralgia and arthritis.

^j Includes dry eye, keratitis, lacrimation increased, photokeratitis, punctate keratitis, and ulcerative keratitis.

^k Includes dysgeusia, ageusia, and taste disorder.

^l Includes urinary tract infection, cystitis, and dysuria.

Clinically relevant adverse reactions occurring in $\leq 15\%$ of patients included retinal pigment epithelial detachment (RPED, 7.8%).

Table 4: Select Laboratory Abnormalities ($\geq 10\%$) Worsening from Baseline in Patients Receiving LYTGOBI in TAS-120-101

	LYTGOBI N = 103	
Laboratory Abnormality ^a	All Grades ^b (%)	Grades 3 or 4 (%)
Hematology		
Decreased hemoglobin	52	6
Decreased lymphocytes	46	10
Decreased platelets	42	1
Decreased leukocytes	33	1.1
Decreased neutrophils	31	1.6
Chemistry		
Increased phosphate ^c	97	39
Increased creatinine ^d	58	0
Increased glucose	52	4.9
Increased calcium	51	1.2
Decreased sodium	51	15
Decreased phosphate	50	20
Increased alanine aminotransferase	50	7
Increased alkaline phosphatase	47	4.9
Increased aspartate aminotransferase	46	13
Decreased albumin	31	2.4
Increased creatine kinase	31	5
Increased bilirubin	28	0
Decreased glucose	25	0

	LYTGOBI N = 103	
Laboratory Abnormality ^a	All Grades ^b (%)	Grades 3 or 4 (%)
Decreased potassium	22	2.1
Increased potassium	16	2
Coagulation		
Increased activated partial thromboplastin time	36	8
Increased prothrombin international normalized ratio	25	0

^a Graded per NCI CTCAE4.03.

^b Percentages are based on patients with data at both baseline and at least one post-baseline data value.

^c NCI CTCAE 4.03 does not define grades for increased phosphate. Laboratory value shift table categories were used to assess increased phosphorus levels (Grades ≥ 3 defined as >7 mg/dL).

^d Graded based on comparison to upper limit of normal.

7 DRUG INTERACTIONS

7.1 Effect of Other Drugs on LYTGOBI

Futibatinib is a substrate of CYP3A and P-gp.

Dual P-gp and Strong CYP3A Inhibitors

Avoid concomitant use of drugs that are dual P-gp and strong CYP3A inhibitors with LYTGOBI.

Concomitant use of drugs that are dual P-gp and strong CYP3A inhibitors with LYTGOBI may increase futibatinib exposure [*see Clinical Pharmacology (12.3)*], which may increase the incidence and severity of adverse reactions.

Dual P-gp and Strong CYP3A Inducers

Avoid concomitant use of dual P-gp and strong CYP3A inducers with LYTGOBI.

Concomitant use of drugs that are dual P-gp and strong CYP3A inducers may decrease futibatinib exposure [*see Clinical Pharmacology (12.3)*], which may reduce the efficacy of LYTGOBI.

7.2 Effect of LYTGOBI on Other Drugs

Futibatinib is an inhibitor of P-gp and BCRP.

P-gp or BCRP Substrates:

Consider more frequent monitoring for adverse reactions associated with concomitantly administered drugs that are sensitive substrates of P-gp or BCRP and reduce the dose of these drugs per their Prescribing Information.

Futibatinib may increase exposure of drugs that are substrates of P-gp or BCRP [*see Clinical Pharmacology (12.3)*].

8 USE IN SPECIFIC POPULATIONS

8.1 Pregnancy

Risk Summary

Based on findings in an animal study and its mechanism of action, LYTGOBI can cause fetal harm or loss of pregnancy when administered to a pregnant woman [*see Clinical Pharmacology (12.1)*]. There are no available data on the use of LYTGOBI in pregnant women. Oral administration of futibatinib to pregnant rats during the

period of organogenesis at maternal plasma exposures below the human exposure at the clinical dose of 20 mg resulted in fetal malformations, fetal growth retardation, and embryo-fetal death (*see Data*). Advise pregnant women of the potential risk to a fetus.

In the U.S. general population, the estimated background risk of major birth defects and miscarriage in clinically recognized pregnancies is 2% to 4% and 15% to 20%, respectively.

Data

Animal Data

Once daily oral administration of futibatinib to pregnant rats during the period of organogenesis resulted in 100% embryofetal mortality due to post-implantation loss at doses ≥ 10 mg/kg (approximately 5 times the recommended clinical dose of 20 mg based on body surface area, BSA). Fetal survival was unaffected at 0.5 mg/kg per day; however, once daily oral administration of futibatinib at the 0.5 mg/kg dose level (approximately 0.2 times the recommended clinical dose of 20 mg based on BSA) resulted in reduced mean fetal body weight and an increase in fetal skeletal and visceral malformations, major blood vessel variations, and reduced ossification.

8.2 Lactation

Risk Summary

There are no data on the presence of futibatinib or its metabolites in human milk or their effects on either the breastfed child or on milk production. Because of the potential for serious adverse reactions from LYTGobi in breastfed children, advise women not to breastfeed during treatment and for 1 week after the last dose.

8.3 Females and Males of Reproductive Potential

LYTGobi can cause fetal harm when administered to a pregnant woman [*see Use in Specific Populations (8.1)*].

Pregnancy Testing

Verify pregnancy status of females of reproductive potential prior to initiating LYTGobi [*see Use in Specific Populations (8.1)*].

Contraception

Females

Advise females of reproductive potential to use effective contraception during treatment with LYTGobi and for 1 week after the last dose.

Males

Advise males with female partners of reproductive potential or who are pregnant to use effective contraception during treatment with LYTGobi and for 1 week after the last dose.

8.4 Pediatric Use

The safety and effectiveness of LYTGobi have not been established in pediatric patients.

Animal Toxicity Data

In 4- or 13-week repeat-dose toxicology studies in adult rats and dogs, findings included increased inorganic

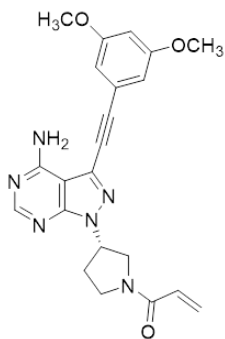
phosphorus and calcium in plasma, ectopic mineralization in various organs and tissues, and lesions in bone/cartilage at futibatinib exposures lower than the human exposure at the clinical dose of 20 mg. Findings in rats also included corneal lesions. Evidence of recovery in rats and dogs was observed four weeks after cessation of dosing except for the ectopic mineralization.

8.5 Geriatric Use

Of the 103 patients treated with LYTGObI in Study TAS-120-101, 22% were 65 years or older. Based on available data, no overall differences in safety or effectiveness of LYTGObI have been observed between patients 65 years of age and older and younger adult patients.

11 DESCRIPTION

Futibatinib is a kinase inhibitor with the chemical name 1-[(3*S*)-3-{4-amino-3-[(3,5-dimethoxyphenyl)ethynyl]-1*H*-pyrazolo[3,4-*d*]pyrimidin-1-yl}pyrrolidin-1-yl]prop-2-en-1-one. Futibatinib has a molecular formula of C₂₂H₂₂N₆O₃ and molecular mass of 418.45 g/mole. Futibatinib has the following chemical structure:



Futibatinib is a white crystalline powder. The solubility of futibatinib is pH dependent with decreasing solubility with increasing pH, being practically insoluble at pH 3 or higher. Futibatinib is insoluble in water and poorly soluble in common solvents. LYTGObI is supplied as 4 mg film-coated tablets for oral administration. Each tablet contains inactive ingredients of corn starch, crospovidone, hydroxypropyl cellulose, lactose monohydrate, magnesium stearate, mannitol, microcrystalline cellulose, and sodium lauryl sulfate. The film coating material contains hypromellose, magnesium stearate, polyethylene glycol, and titanium dioxide.

12 CLINICAL PHARMACOLOGY

12.1 Mechanism of Action

Futibatinib is a small molecule kinase inhibitor of FGFR 1, 2, 3, and 4 with IC₅₀ values of less than 4 nM. Futibatinib covalently binds FGFR. Constitutive FGFR signaling can support the proliferation and survival of malignant cells. Futibatinib inhibited FGFR phosphorylation and downstream signaling and decreased cell viability in cancer cell lines with FGFR alterations including FGFR fusions/rearrangements, amplifications, and mutations. Futibatinib demonstrated anti-tumor activity in mouse and rat xenograft models of human tumors with activating FGFR genetic alterations.

12.2 Pharmacodynamics

Serum Phosphate

Futibatinib increased serum phosphate levels due to FGFR inhibition. Serum phosphate increased with increasing futibatinib exposure across the dose range of 4 to 24 mg orally once daily (0.2 to 1.2 times the

recommended dose), with increased risk of hyperphosphatemia at higher futibatinib exposure.

Cardiac Electrophysiology

At four times the approved recommended dose, LYTGOBI does not cause clinically significant QTc interval prolongation.

12.3 Pharmacokinetics

The pharmacokinetics of futibatinib administered 20 mg once daily were evaluated in patients with advanced solid tumors unless otherwise specified.

Futibatinib exposure (AUC) increased proportionally over the dose range from 4 to 24 mg orally once daily (0.2 to 1.2 times the maximum approved recommended dosage). At the recommended dosage, the geometric mean (coefficient of variation [CV] %) maximal concentration of futibatinib at steady state ($C_{\max,ss}$) was 144 ng/mL (50%) and AUC at steady state (AUC_{ss}) was 790 ng·hr/mL (45%), with no accumulation after repeat doses.

Absorption

Median time to reach maximum futibatinib plasma concentration (T_{\max}) was 2 (range: 1.2 to 22.8) hours.

Effect of Food

Administration of LYTGOBI with a high-fat and high-calorie meal (900 to 1000 calories with approximately 50% of total caloric content from fat) decreased futibatinib AUC by 11% and C_{\max} by 42% in healthy subjects.

Distribution

The geometric mean (CV%) apparent volume of distribution (V_c/F) is 66 L (18%). Futibatinib is 95% bound to human plasma protein at 0.2 to 5 $\mu\text{mol/L}$ in vitro, primarily to albumin and α 1-acid glycoprotein.

Elimination

The mean (CV%) elimination half-life ($T_{1/2}$) of futibatinib is 2.9 hours (27%) and the geometric mean (CV%) apparent clearance (CL/F) is 20 L/h (23%).

Metabolism

Futibatinib is primarily metabolized by CYP3A and to a lesser extent by CYP2C9 and CYP2D6 in vitro. Unchanged futibatinib is the major drug-related moiety in plasma (59% of radioactivity) in healthy subjects.

Excretion

Following a single oral dose of 20 mg radiolabeled futibatinib, approximately 91% of the total recovered radioactivity was observed in feces and 9% in urine, with negligible unchanged futibatinib in urine or feces.

Specific Populations

No clinically meaningful differences in the systemic exposure of futibatinib were observed based on age (18 - 82 years), sex, race (White, Asian, and African American), body weight (36 - 152 kg), mild to moderate renal impairment (creatinine clearance [CL_{cr}] 30 - 89 mL/min estimated by Cockcroft-Gault), or mild hepatic impairment (total bilirubin \leq upper limit of normal (ULN) and aspartate transaminase (AST) $>$ ULN, or total bilirubin >1 to $1.5 \times$ ULN and any AST).

The pharmacokinetics of futibatinib has not been studied in patients with severe renal impairment (CL_{cr} 15 - 29 mL/min), renal dialysis in end-stage renal disease (CL_{cr} <15 mL/min), or moderate or severe hepatic impairment (total bilirubin >1.5 × ULN and any AST).

Drug Interaction Studies

Clinical Studies

Effect of Other Drugs on Futibatinib

Dual P-gp and strong CYP3A inhibitors: Co-administration of multiple doses of itraconazole (P-gp and strong CYP3A inhibitor) increased single dose futibatinib C_{max} by 51% and AUC by 41% [see Drug Interactions (7.1)].

Dual P-gp and strong CYP3A inducers: Co-administration of multiple doses of rifampin (P-gp and strong CYP3A inducer) decreased single dose futibatinib C_{max} by 53% and AUC by 64% [see Drug Interactions (7.1)].

The effect of a P-gp modulator (without CYP3A modulation), or a strong CYP3A modulator (without P-gp modulation) on the exposure of futibatinib has not been investigated.

Gastric acid reducing agents: Co-administration of multiple doses of lansoprazole (proton pump inhibitor) had no effect on single dose futibatinib AUC.

Effect of Futibatinib On Other Drugs

CYP3A substrates: Co-administration of multiple doses of futibatinib had no effect on single dose midazolam (sensitive CYP3A substrate) AUC.

In Vitro Studies

Effect of Transporters on Futibatinib: Futibatinib is a substrate for P-gp and BCRP, but not for OATP1B1 or OATP1B3.

Effect of Futibatinib on CYP Enzymes: Futibatinib does not inhibit CYP1A2, CYP2B6, CYP2C8, CYP2C9, CYP2C19, CYP2D6 or CYP3A, and does not induce CYP1A2, CYP2B6 or CYP3A4 at clinically relevant concentrations.

Effect of Futibatinib on Transporter Systems: Futibatinib inhibits P-gp and BCRP, but does not inhibit OAT1, OAT3, OCT2, OATP1B1, OATP1B3, MATE1, or MATE2K at clinically relevant concentrations.

13 NONCLINICAL TOXICOLOGY

13.1 Carcinogenesis, Mutagenesis, Impairment of Fertility

Carcinogenicity studies have not been conducted with futibatinib.

Futibatinib was not mutagenic in an in vitro bacterial reverse mutation (Ames) assay. Futibatinib was clastogenic in an in vitro chromosomal aberration assay. Futibatinib was not clastogenic in a rat bone marrow micronucleus assay or a rat DNA damaging (Comet) assay.

Dedicated fertility studies with futibatinib have not been conducted.

14 CLINICAL STUDIES

14.1 Cholangiocarcinoma

TAS-120-101 (NCT02052778), a multicenter, open-label, single-arm trial, evaluated the efficacy of LYTGOBI in 103 patients with previously treated, unresectable, locally advanced or metastatic intrahepatic cholangiocarcinoma. The presence of FGFR2 fusions or other rearrangements was determined in 102 enrolled patients (99%) using next generation sequencing (NGS) testing. Qualifying in-frame fusions and other rearrangements were predicted to have a breakpoint within intron 17/exon 18 of the FGFR2 gene leaving the FGFR2 kinase domain intact.

Patients received LYTGOBI at a dosage of 20 mg orally once daily until disease progression or unacceptable toxicity. The major efficacy outcome measures were overall response rate (ORR) and duration of response (DoR) as determined by an independent review committee (IRC) according to Response Evaluation Criteria in Solid Tumors (RECIST) v1.1.

The trial population characteristics were: Median age was 58 years (range: 22 to 79 years) with 22% of patients ≥ 65 years, 56% were female, race was: 50% White, 29% Asian, 8% Black or African American, 1% Native Hawaiian or Other Pacific Islander, 13% unknown, baseline Eastern Cooperative Oncology Group (ECOG) performance status of 0 (47%) or 1 (53%). Seventy-eight percent (78%) of patients had in-frame FGFR2 gene fusions and the most commonly identified FGFR2 fusion partner was BICC1 (n=24, 23%). Twenty-two percent (22%) of patients had other FGFR2 rearrangements that may not be in-frame with the partner gene or the partner gene was not identifiable.

All patients had received at least 1 prior systemic therapy, 30% had 2 prior lines of therapy, and 23% had 3 or more prior lines of therapy. All patients received a prior platinum-based therapy including 91% with prior gemcitabine/cisplatin.

Efficacy results are summarized in [Table 5](#). The median time to response was 2.5 months (range 0.7 – 7.4 months).

Table 5: Efficacy Results in TAS-120-101

Efficacy Parameter	LYTGOBI N = 103
ORR (95% CI)^a	42% (32, 52)
Partial response, n (%)	43 (42%)
Median DoR (months) (95% CI)^b	9.7 (7.6, 17.1)
DoR ≥ 6 months, n (%)	31 (72%)
DoR ≥ 12 months, n (%)	6 (14%)

^a The 95% confidence interval (CI) was calculated using Clopper–Pearson method.

^b The 95% confidence interval (CI) was constructed based on a log-log transformed CI for the survival function.

16 HOW SUPPLIED/STORAGE AND HANDLING

LYTGOBI are round, white, film-coated 4 mg tablets debossed with “4MG” on one side, and “FBN” on the other side, packaged in blister cards and supplied in child-resistant DosePak® as follows:

- 20 mg daily dose: Each carton contains 1 blister card containing a 7-day supply (35 tablets; 4 mg futibatinib per tablet). [NDC-64842-120-35]
- 16 mg daily dose: Each carton contains 1 blister card containing a 7-day supply (28 tablets; 4 mg futibatinib per tablet). [NDC-64842-120-28]
- 12 mg daily dose: Each carton contains 1 blister card containing a 7-day supply (21 tablets; 4 mg futibatinib per tablet). [NDC-64842-120-21]

Store LYTGOBI tablets at room temperature 20°C to 25°C (68°F to 77°F); excursions permitted between 15°C and 30°C (59°F to 86°F). ([see USP Controlled Room Temperature]).

17 PATIENT COUNSELING INFORMATION

Advise the patient to read the FDA-approved patient labeling (Patient Information).

Ocular Toxicity

Advise patients that LYTGOBI may cause ocular toxicity including RPED and to immediately inform their healthcare provider if they experience any visual changes [*see Warnings and Precautions (5.1)*]. Advise patients to use artificial tears, or hydrating or lubricating eye gels to prevent or treat dry eyes [*see Warnings and Precautions (5.1)*].

Hyperphosphatemia and Soft Tissue Mineralization

Inform patients that LYTGOBI may cause hyperphosphatemia and soft tissue mineralization and to immediately inform their healthcare provider of any symptoms related to acute change in phosphate levels such as muscle cramps, numbness, or tingling around the mouth [*see Warnings and Precautions 5.2*].

Nail Disorders

Advise patients that LYTGOBI may cause nail disorders [*see Adverse Reactions (6.1)*].

Embryo-Fetal Toxicity

- Advise females to inform their healthcare provider if they are pregnant or become pregnant. Inform female patients of the risk to a fetus and potential loss of pregnancy [*see Warnings and Precautions (5.3) and Use in Specific Populations (8.1)*].
- Advise females of reproductive potential to use effective contraception while on LYTGOBI and for 1 week after the last dose [*see Use in Specific Populations (8.3)*].
- Advise males with female partners of reproductive potential or who are pregnant to use effective contraception during treatment and for 1 week after receiving the last dose of LYTGOBI [*see Use in Specific Populations (8.3)*].

Lactation

- Advise patients not to breastfeed during treatment with LYTGOBI and for 1 week after the last dose [*see Use in Specific Populations (8.2)*].

Administration

- Instruct patients to not crush, chew, split or dissolve tablets.
- Instruct patients if they miss a dose by 12 or more hours or if they vomit after taking a dose, resume dosing with the next scheduled dose. Extra tablets should not be taken to make up for the missed dose [see *Dosage and Administration (2.2)*].

Drug Interactions

Advise patients to inform their healthcare providers of all concomitant medications, including prescription medicines, over-the-counter drugs, and herbal products. Advise patients to avoid grapefruit products during treatment with LYTGOBI [see *Drug Interactions (7.1)*].

Manufactured for:

Taiho Pharmaceutical Co., Ltd.
Japan

Distributed by:

Taiho Oncology, Inc.
Princeton, NJ 08540 USA
LYTGOBI is a trademark of Taiho Pharmaceutical Co., Ltd.
U.S. Patent Nos. 9,108,973 and 10,434,103
© 2022 Taiho Oncology, Inc. All rights reserved.

PATIENT INFORMATION

LYTGOBI (light-GOH-bee)
(futibatinib)
tablets

What is LYTGOBI?

LYTGOBI is a prescription medicine that is used to treat adults with bile duct cancer (intrahepatic cholangiocarcinoma) that has spread or cannot be removed by surgery:

- who have already received a previous treatment, **and**
- whose tumor has a certain type of abnormal "FGFR2" gene.

Your healthcare provider will test your cancer for a certain type of abnormal FGFR2 gene and make sure that LYTGOBI is right for you.

It is not known if LYTGOBI is safe and effective in children.

Before you take LYTGOBI, tell your healthcare provider about all of your medical conditions, including if you:

- have vision or eye problems.
- are pregnant or plan to become pregnant. LYTGOBI can harm your unborn baby or cause loss of your pregnancy (miscarriage). You should not become pregnant during treatment with LYTGOBI.

Females who can become pregnant:

- Your healthcare provider should do a pregnancy test before you start treatment with LYTGOBI.
- You should use an effective method of birth control during treatment and for 1 week after your final dose of LYTGOBI. Talk to your healthcare provider about birth control methods that may be right for you.
- Tell your healthcare provider right away if you become pregnant or think that you may be pregnant.

Males with female partners who can become pregnant:

- You should use effective birth control when sexually active during treatment with LYTGOBI and for 1 week after your last dose of LYTGOBI.
- are breastfeeding or plan to breastfeed. It is not known if LYTGOBI passes into your breast milk. Do not breastfeed during treatment and for 1 week after your last dose of LYTGOBI.

Tell your healthcare provider about all the medicines you take, including prescription and over-the-counter medicines, vitamins, and herbal supplements. LYTGOBI and other medicines may affect each other causing side effects. LYTGOBI may affect the way other medicines work, and other medicines may affect how LYTGOBI works.

How should I take LYTGOBI?

- Take LYTGOBI exactly as your healthcare provider tells you.
- Take LYTGOBI 1 time each day with or without food at about the same time each day. You will continue for as long as your healthcare provider tells you to.
- Swallow LYTGOBI tablets whole. **Do not** crush, chew, split, or dissolve LYTGOBI tablets. Tell your healthcare provider if you have problems swallowing LYTGOBI tablets whole.
- You should not eat or drink grapefruit products during treatment with LYTGOBI.
- Your healthcare provider may change your dose of LYTGOBI, or may temporarily or completely stop treatment if you get certain side effects.
- If you miss a dose of LYTGOBI, you can take the missed dose within 12 hours on the same day. If more than 12 hours have passed, do not make up the dose. Take your regular dose of LYTGOBI the next day at the usual time. **Do not** take more LYTGOBI than prescribed to make up for the missed dose.
- If you vomit after taking LYTGOBI, **do not** take another LYTGOBI tablet. Take your regular dose of LYTGOBI the next day at the usual time.

What are the possible side effects of LYTGOBI?

LYTGOBI may cause serious side effects, including:

- **Eye problems.** Certain eye problems are common with LYTGOBI but can also be serious. Eye problems include dry eye or inflamed eyes, inflamed cornea (front part of the eye), increased tears, and a disorder of the retina (an internal part of the eye). You will need to see an eye specialist for a complete eye exam before you begin treatment

with LYTGObI, every 2 months for the first 6 months, and every 3 months thereafter during treatment with LYTGObI.

- **Tell your healthcare provider right away** if you develop any changes in your vision during treatment with LYTGObI, including blurred vision, flashes of light, or seeing black spots. You may need to see an eye specialist right away.
- You should use artificial tears or substitutes, or hydrating or lubricating eye gels during treatment with LYTGObI to prevent or treat dry eyes.
- **High phosphate levels in your blood (hyperphosphatemia) and build up of minerals in different tissues in your body.** Hyperphosphatemia is common with LYTGObI but can also be serious. High levels of phosphate in your blood may lead to buildup of minerals such as calcium, in different tissues in your body. Your healthcare provider will check your blood phosphate levels during treatment with LYTGObI.
 - Your healthcare provider may prescribe changes in your diet or phosphate lowering therapy, or change, interrupt or stop LYTGObI if needed.
 - Tell your healthcare provider right away if you develop any muscle cramps, or numbness or tingling around your mouth.

The most common side effects of LYTGObI include:

- changes in kidney function blood tests
- increased blood glucose level
- decreased red blood cell, white blood cell, and platelet counts
- increased calcium level in the blood
- decreased sodium and phosphate levels in the blood
- changes in liver function blood tests
- nails separate from the bed or poor formation of the nail; change in the color of nails
- muscle pain
- constipation
- diarrhea
- feeling tired or weak
- changes in tests used to measure your blood clotting time
- dry mouth
- hair loss
- decreased protein level (albumin) in the blood
- mouth sores
- stomach area (abdominal) pain
- dry skin
- decreased glucose and potassium level in the blood
- joint pain
- changes in sense of taste
- dry eye
- nausea
- decrease in appetite
- urinary tract infection
- redness, swelling, peeling or tenderness, mainly on the hands or feet (hand-foot syndrome)
- vomiting

These are not all the possible side effects of LYTGObI. For more information, ask your healthcare provider or pharmacist.

Call your doctor for medical advice about side effects. You may report side effects to FDA at 1-800-FDA-1088.

How should I store LYTGObI?

- Store LYTGObI at room temperature between 68°F to 77°F (20°C to 25°C).

Keep LYTGObI and all medicines out of the reach of children.

General information about the safe and effective use of LYTGObI.

Medicines are sometimes prescribed for purposes other than those listed in a Patient Information leaflet. Do not use LYTGObI for a condition for which it is not prescribed. Do not give LYTGObI to other people, even if they have the same symptoms you have. It may harm them. If you would like more information, talk with your healthcare provider.

You can ask your pharmacist or healthcare provider for information that is written for healthcare professionals.

What are the ingredients in LYTGObI?

Active ingredient: futibatini

Inactive ingredients: corn starch, crospovidone, hydroxypropyl cellulose, lactose monohydrate, magnesium stearate, mannitol, microcrystalline cellulose, and sodium lauryl sulfate.

The film coating material contains: hypromellose, magnesium stearate, polyethylene glycol, and titanium dioxide.

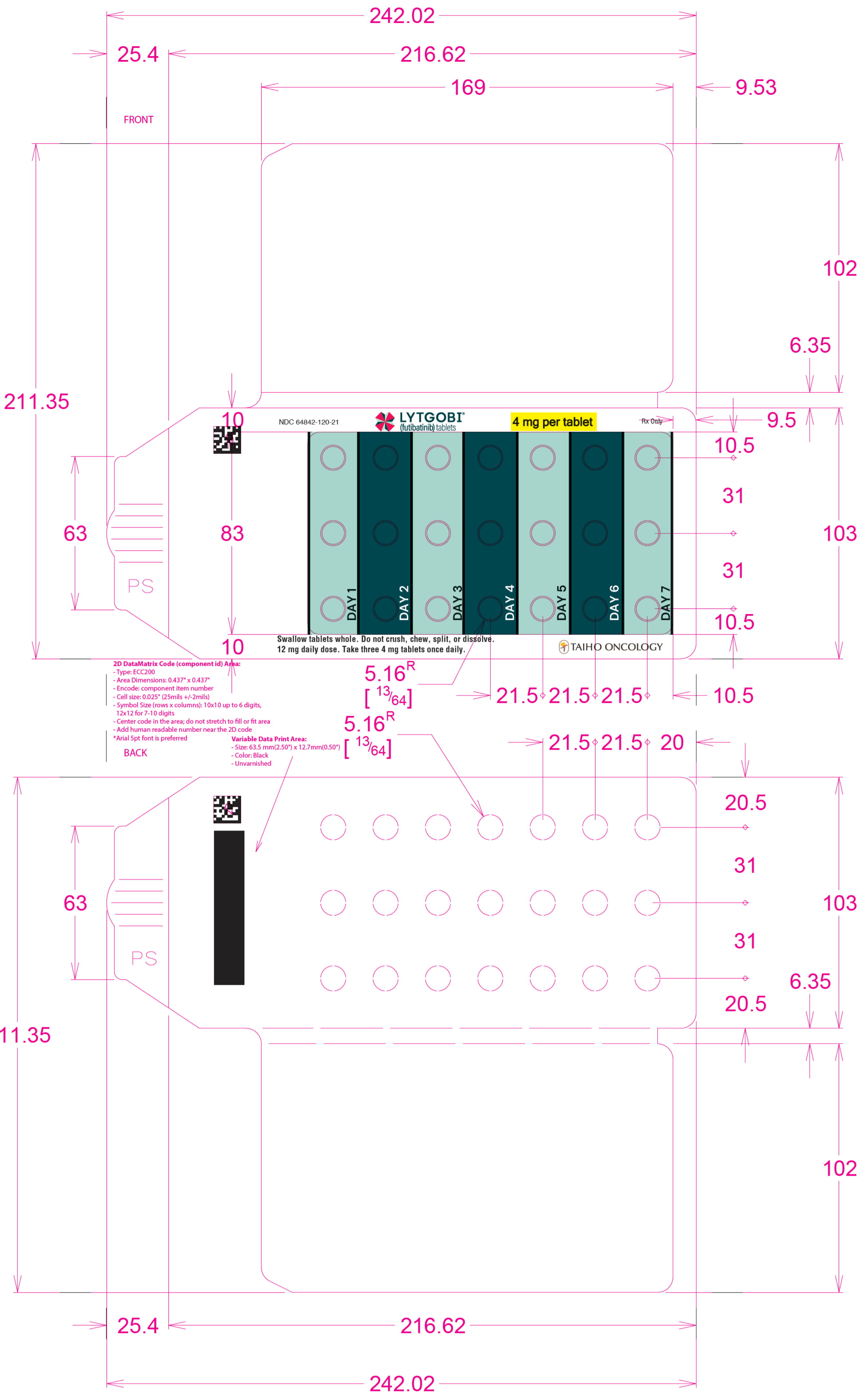
Manufactured for: Taiho Pharmaceutical Co., Ltd. Japan

LYTGObI is a trademark of Taiho Pharmaceutical Co., Ltd.; U.S. Patent Nos. 9,108,973 and 10,434,103; © 2022 Taiho Oncology, Inc. All rights reserved

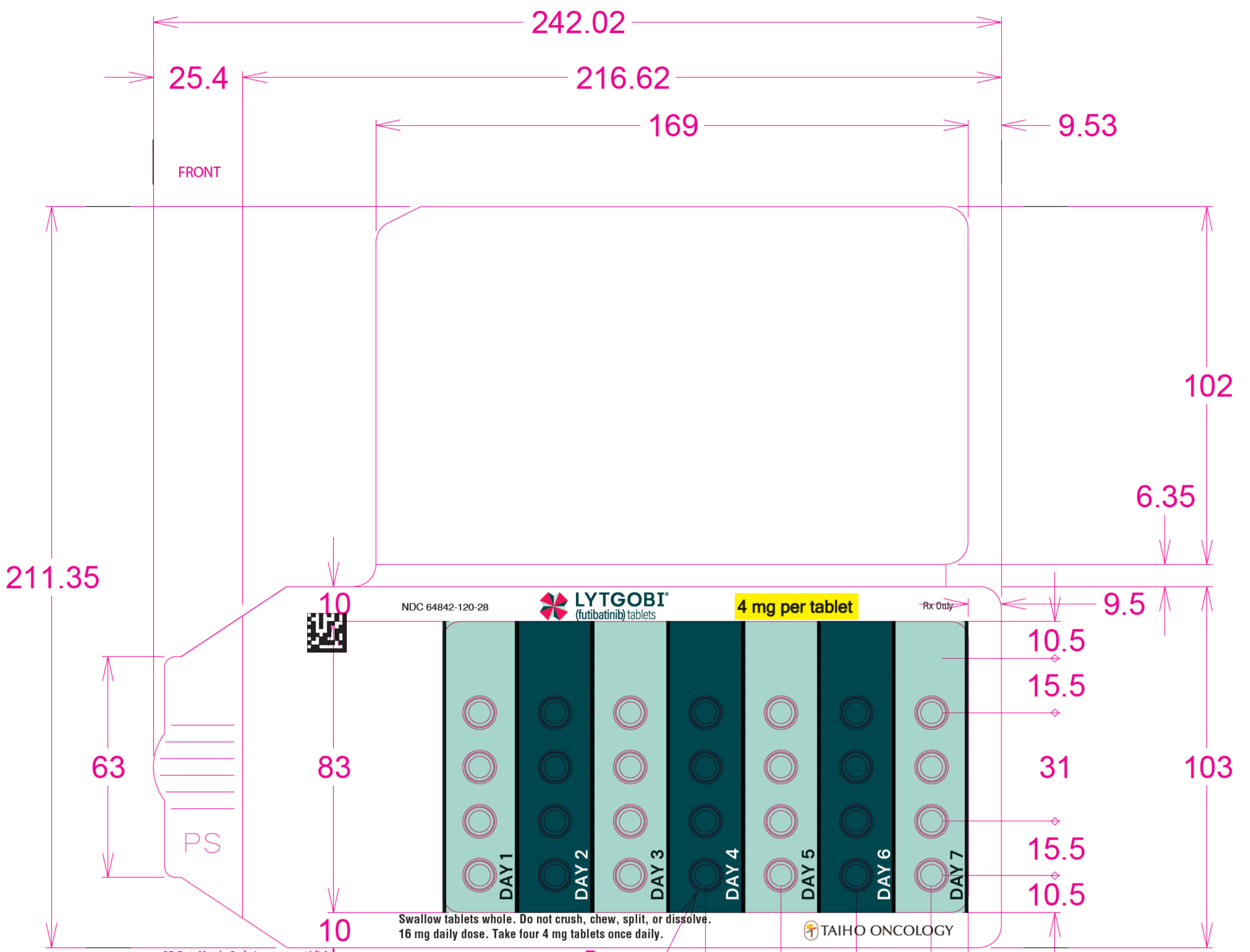
For more information, go to www.LYTGObI.com or call 1-844-878-2446.

This Patient Information has been approved by the U.S. Food and Drug Administration.

Issued: 09/2022



(b) (4)



2D DataMatrix Code (component id) Area:

- Type: ECC200
- Area Dimensions: 0.437" x 0.437"
- Encode: component item number
- Cell size: 0.025" (25mils +/-2mils)
- Symbol Size (rows x columns): 10x10 up to 6 digits, 12x12 for 7-10 digits
- Center code in the area; do not stretch to fill or fit area
- Add human readable number near the 2D code
- *Arial 5pt font is preferred

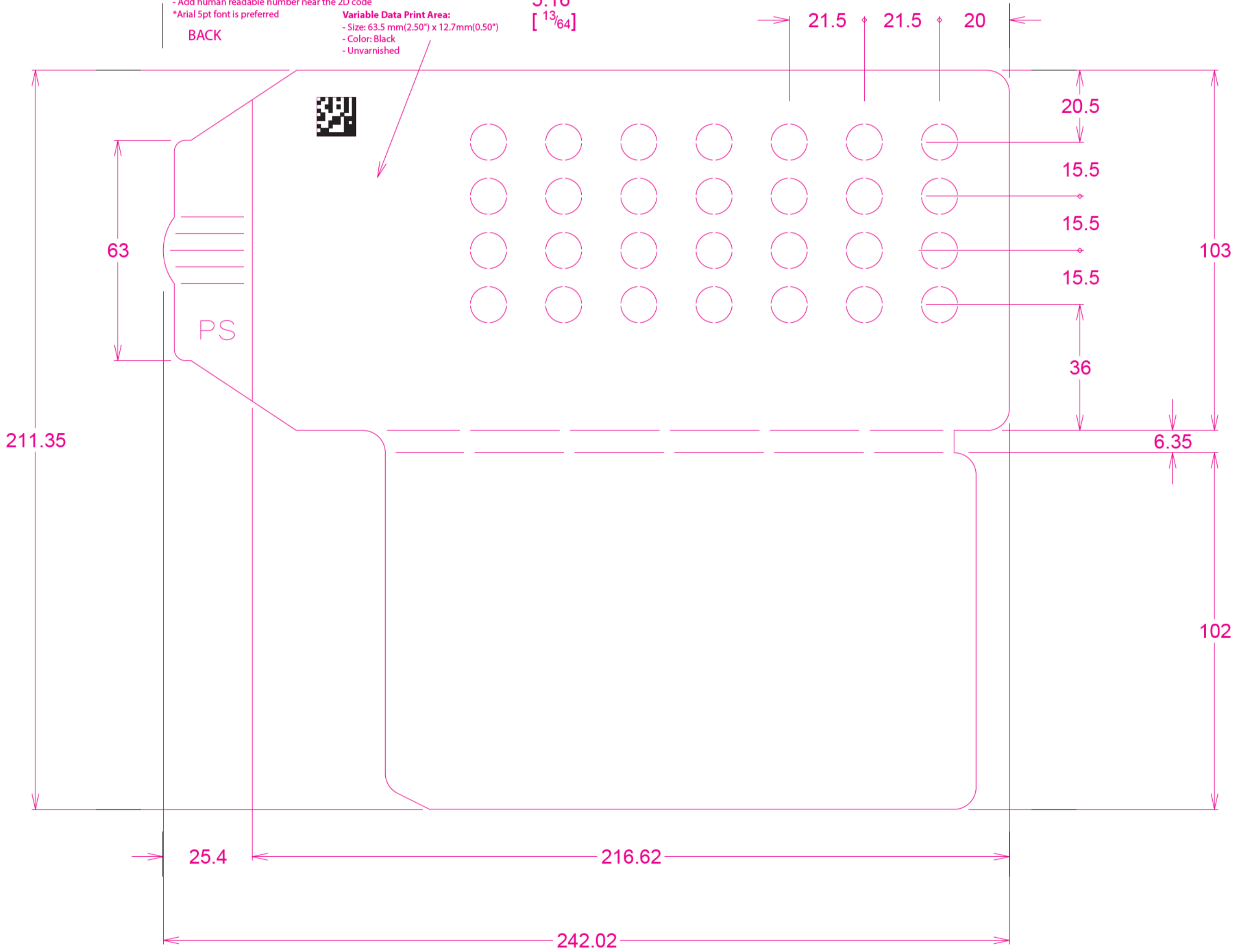
BACK

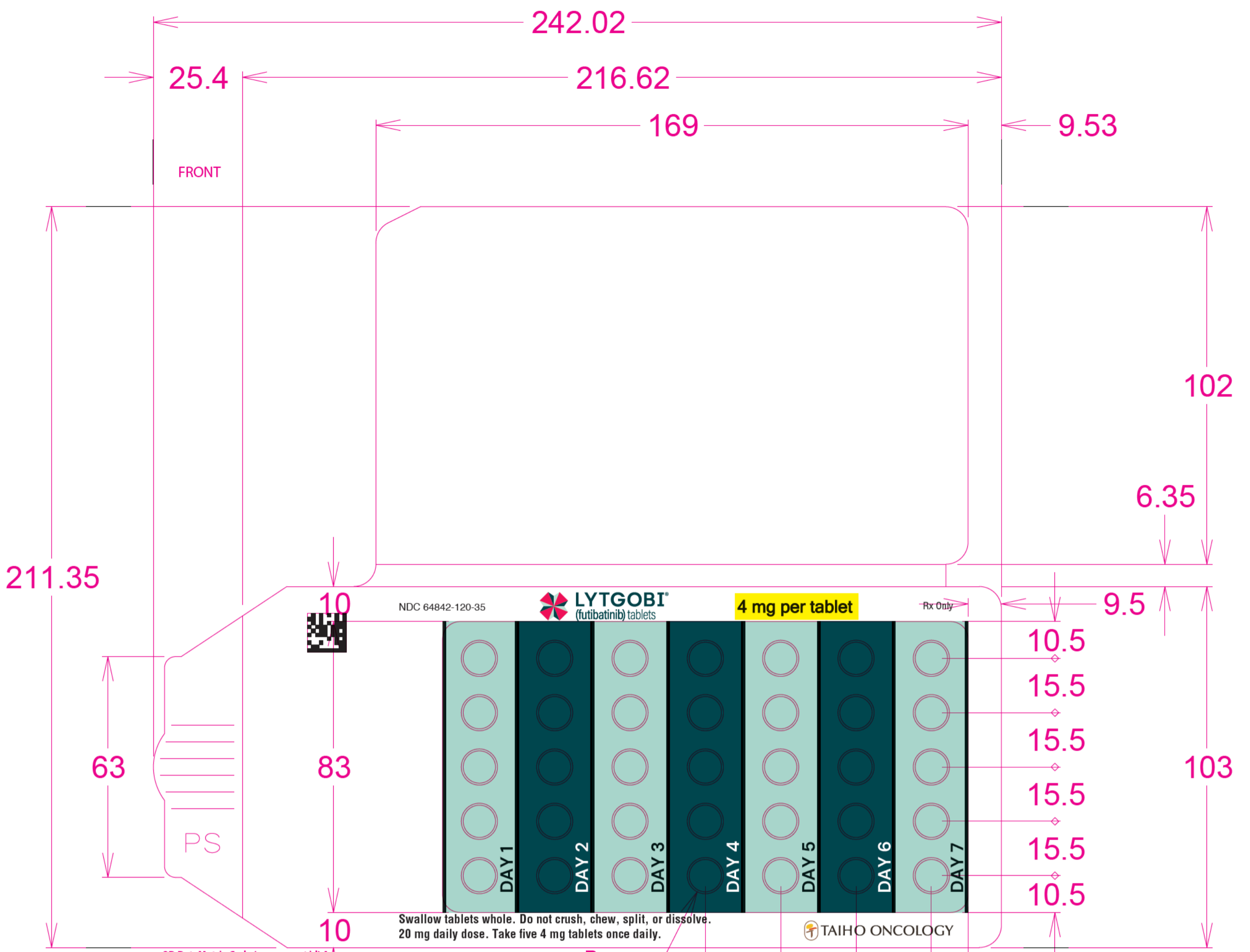
Variable Data Print Area:

- Size: 63.5 mm(2.50") x 12.7mm(0.50")
- Color: Black
- Unvarnished

5.16^R
[¹³/₆₄]

5.16^R
[¹³/₆₄]





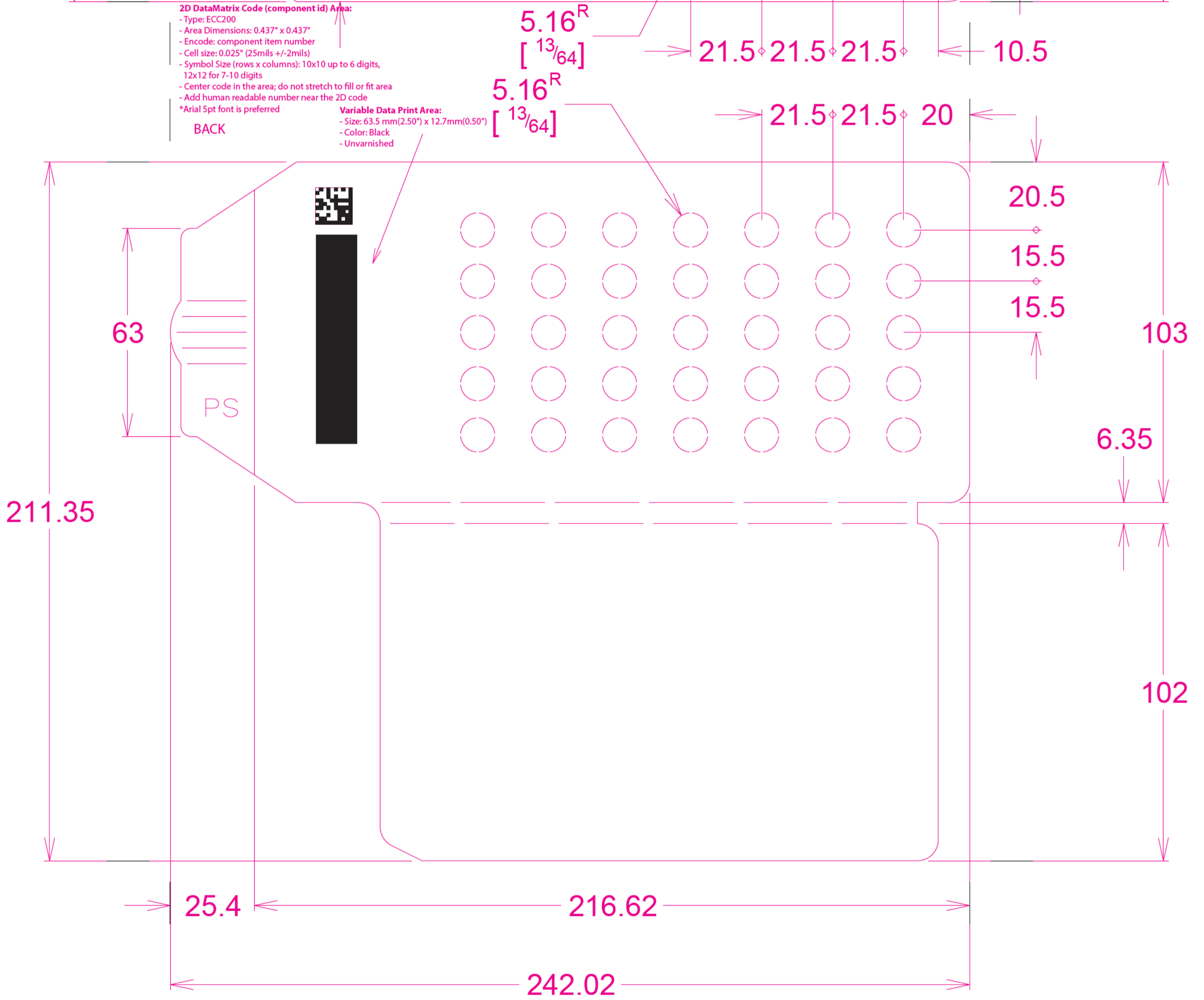
2D DataMatrix Code (component id) Area:

- Type: ECC200
- Area Dimensions: 0.437" x 0.437"
- Encode: component item number
- Cell size: 0.025" (25mils +/-2mils)
- Symbol Size (rows x columns): 10x10 up to 6 digits, 12x12 for 7-10 digits
- Center code in the area; do not stretch to fill or fit area
- Add human readable number near the 2D code
- *Arial 5pt font is preferred

Variable Data Print Area:

- Size: 63.5 mm(2.50") x 12.7mm(0.50")
- Color: Black
- Unvarnished

BACK



NDC 64842-120-21



LYTGOBI
(futibatinib) tablets

12 mg daily dose

Take three 4 mg tablets orally once daily

GTIN:
SN:
EXP:
LOT:



NDC 64842-120-21



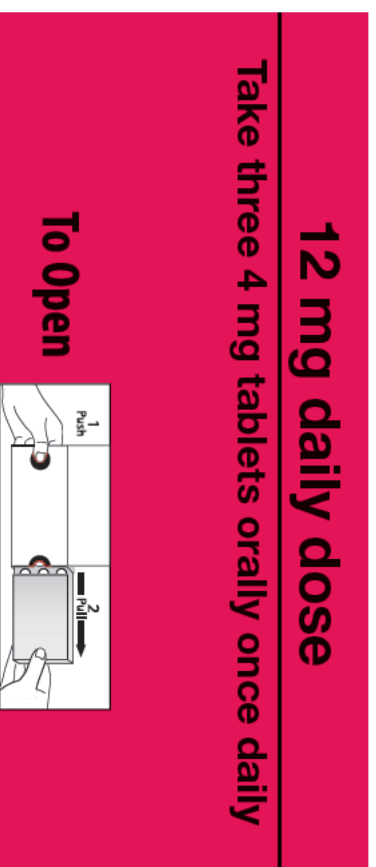
LYTGOBI
(futibatinib) tablets

12 mg daily dose

Take three 4 mg tablets orally once daily

Rx Only

4 mg per tablet
One blister card
containing 21 tablets
7-day supply

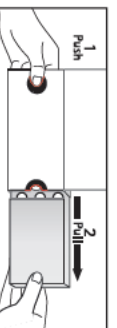


To Open

4 mg per tablet
One blister card
containing 21 tablets
7-day supply

Rx Only

To Open



1. Push
Use thumb to push the button gently, and hold button.

Take LYTGOBI with or without food at approximately the same time every day.
LYTGOBI 12 mg daily dose: Take three 4 mg tablets once daily.
Swallow tablets whole. Do not crush, chew, split, or dissolve tablets.
If the patient misses a dose of LYTGOBI for more than 12 hours, resume dosing with the next scheduled dose.

2. Pull
While holding the button down, pull out card.



12 mg daily dose

12 mg daily dose



11202127879200(1.0)

White Space for Rx Label
FPO



12 mg daily dose

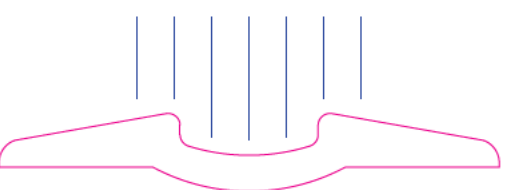
12 mg daily dose



Dispose of unused tablets in accordance with local requirements.
Manufactured for:
Taiho Pharmaceutical Co., Ltd., Japan
Distributed by:
Taiho Oncology, Inc. Princeton, NJ 08540 USA

Each Tablet contains:
Futibatinib 4 mg
Recommended Dosage: 12 mg (three 4 mg tablets) orally once daily.
Store LYTGOBI tablets at room temperature 20°C to 25°C (68°F to 77°F); excursions permitted between 15°C and 30°C (59°F to 86°F). [see USP Controlled Room Temperature].
Dispense in the original packaging.

PS



NDC 64842-120-28



LYTGOBI
(futibatinib) tablets

16 mg daily dose

Take four 4 mg tablets orally once daily

GTIN:
SN:
EXP:
LOT:



TAIHO
ONCOLOGY INC.

OPEN HERE

NDC 64842-120-28

Rx Only



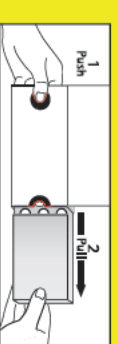
LYTGOBI
(futibatinib) tablets

16 mg daily dose

Take four 4 mg tablets orally once daily



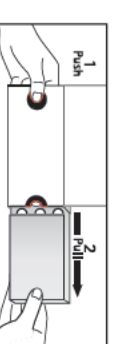
TAIHO
ONCOLOGY INC.



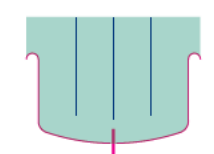
To Open

4 mg per tablet
One blister card
containing 28 tablets
7-day supply

Rx Only



To Open



1. Push

Use thumb to push the button gently, and hold button.

Take LYTGOBI with or without food at approximately the same time every day.
LYTGOBI 16 mg daily dose: Take four 4 mg tablets once daily.
Swallow tablets whole. Do not crush, chew, split, or dissolve tablets.
If the patient misses a dose of LYTGOBI for more than 12 hours, resume dosing with the next scheduled dose.



2. Pull

While holding the button down, pull out card.



16 mg daily dose

16 mg daily dose



White Space for Rx Label

FPO

Dispose of unused tablets in accordance with local requirements.
Manufactured for:
Taiho Pharmaceutical Co., Ltd., Japan
Distributed by:
Taiho Oncology, Inc. Princeton, NJ 08540 USA



08202127879200(1.0)

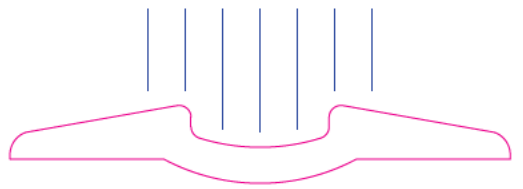
16 mg daily dose



Each Tablet contains:
Futibatinib 4 mg

Recommended Dosage: 16 mg (four 4 mg tablets) orally once daily.

Store LYTGOBI tablets at room temperature 20°C to 25°C (68°F to 77°F); excursions permitted between 15°C and 30°C (59°F to 86°F). (see USP Controlled Room Temperature).
Dispense in the original packaging.



PS



NDC 64842-120-35



LYTGOBI
(futibatinib) tablets

20 mg daily dose

Take five 4 mg tablets orally once daily

GTIN:
SN:
EXP:
LOT:



NDC 64842-120-35

OPEN HERE



LYTGOBI
(futibatinib) tablets

20 mg daily dose

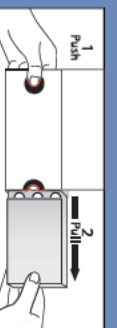
Take five 4 mg tablets orally once daily

Rx Only

4 mg per tablet
One blister card
containing 35 tablets
7-day supply



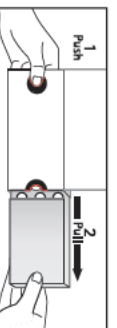
To Open



4 mg per tablet
One blister card
containing 35 tablets
7-day supply

Rx Only

To Open



2. Pull
While holding the
blister down, pull
out card.

1. Push
Use thumb
to push the
button, and
hold button.

Take LYTGOBI with or without food at approximately
the same time every day.
LYTGOBI 20 mg daily dose: Take five 4 mg tablets
once daily.
Swallow tablets whole. Do not crush, chew, split, or
dissolve tablets.
If the patient misses a dose of LYTGOBI for more than
12 hours, resume dosing with the next scheduled dose.

LYTGOBI
(futibatinib) tablets

20 mg daily dose



85302127879200(1.0)

Manufactured for:
Taiho Pharmaceutical Co., Ltd., Japan

Distributed by:
Taiho Oncology, Inc. Princeton, NJ 08540 USA

Dispose of unused tablets in accordance with local requirements.

Each Tablet contains:
Futibatinib 4 mg

Recommended Dosage: 20 mg (five 4 mg tablets) orally once daily.

Store LYTGOBI tablets at room temperature 20°C to 25°C
(68°F to 77°F); excursions permitted between 15°C and 30°C
(59°F to 86°F) [see USP Controlled Room Temperature].

Dispense in the original packaging.

White Space for Rx Label

FPO

LYTGOBI
(futibatinib) tablets

LYTGOBI
(futibatinib) tablets

20 mg daily dose

20 mg daily dose

PS



This is a representation of an electronic record that was signed electronically. Following this are manifestations of any and all electronic signatures for this electronic record.

/s/

PAUL G KLUETZ
10/05/2022 10:23:56 AM