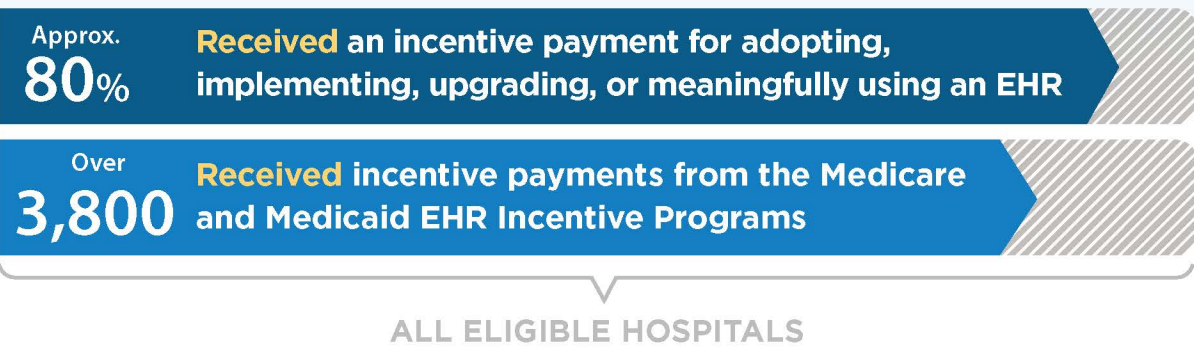


# A Record of Progress on Health Information Technology

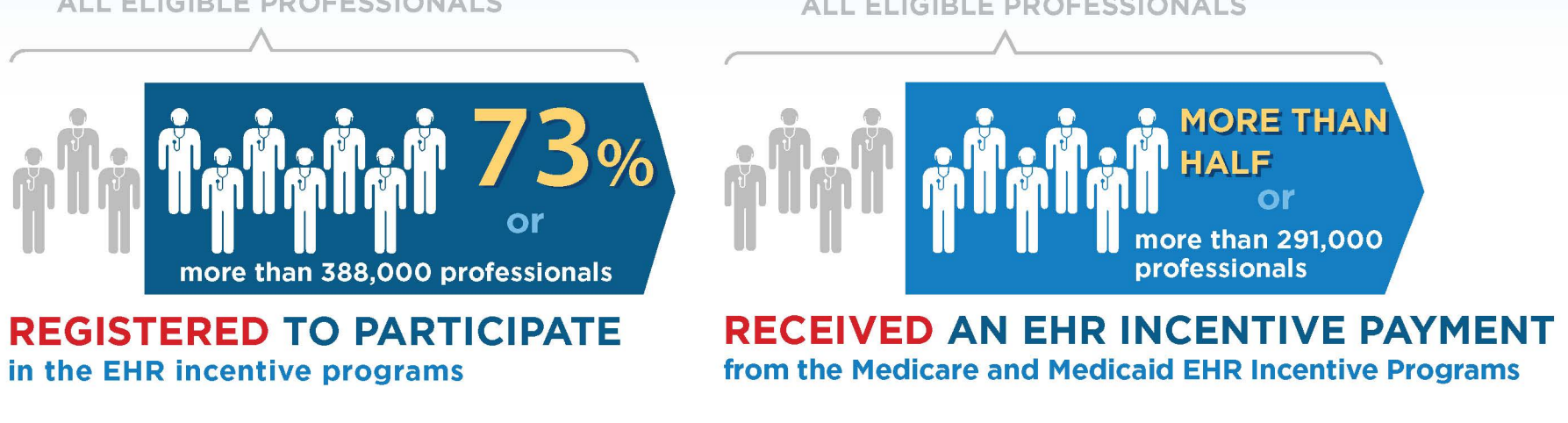
## Progress to Date:

### ROBUST PARTICIPATION IN THE EHR INCENTIVE PROGRAMS:

#### HOSPITAL PARTICIPATION AS OF APRIL 2013:



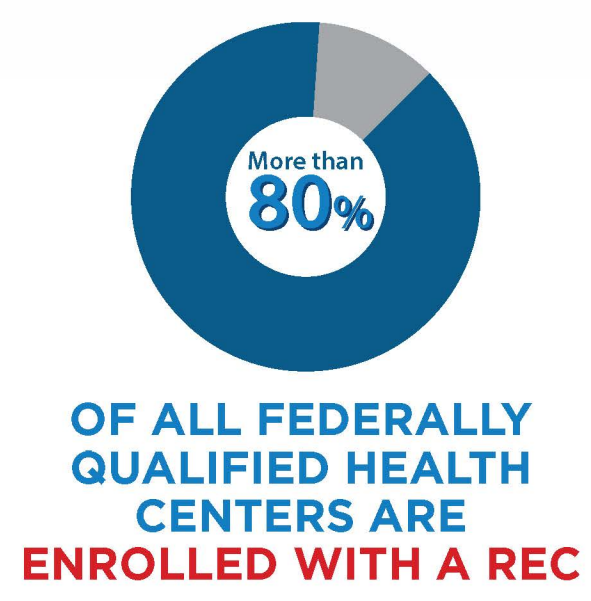
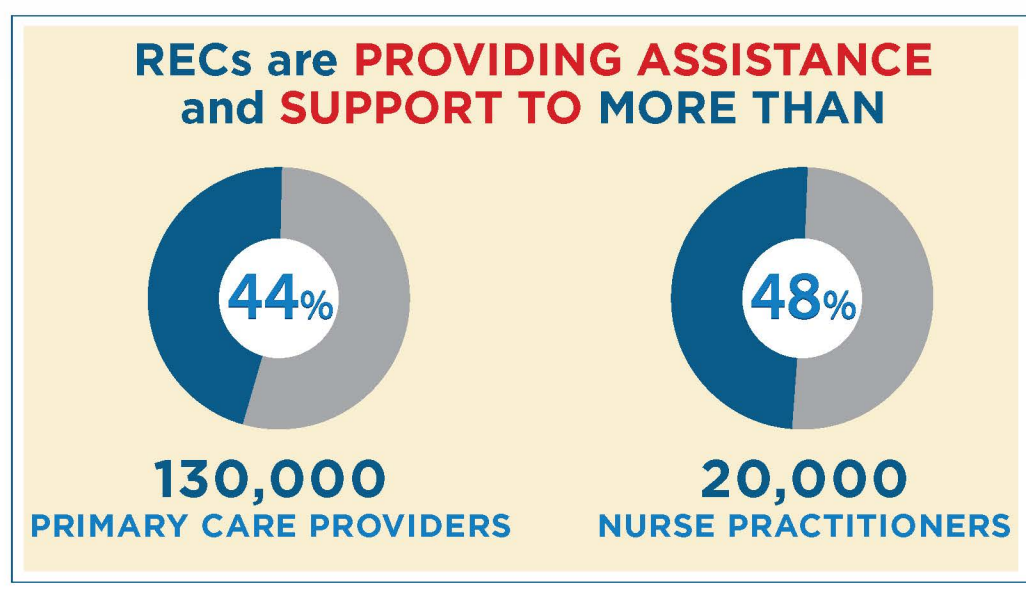
#### PHYSICIANS AND OTHER HEALTH CARE PROVIDER PARTICIPATION AS OF APRIL 2013:



#### ASSISTANCE FROM REGIONAL EXTENSION CENTERS:

##### HITECH FUNDS ESTABLISHED

**62** HEALTH IT REGIONAL EXTENSION CENTERS (RECs) to offer technical assistance and guidance that is critical to accelerating the provider adoption and meaningful use of EHRs, particularly in rural areas and other underserved settings.



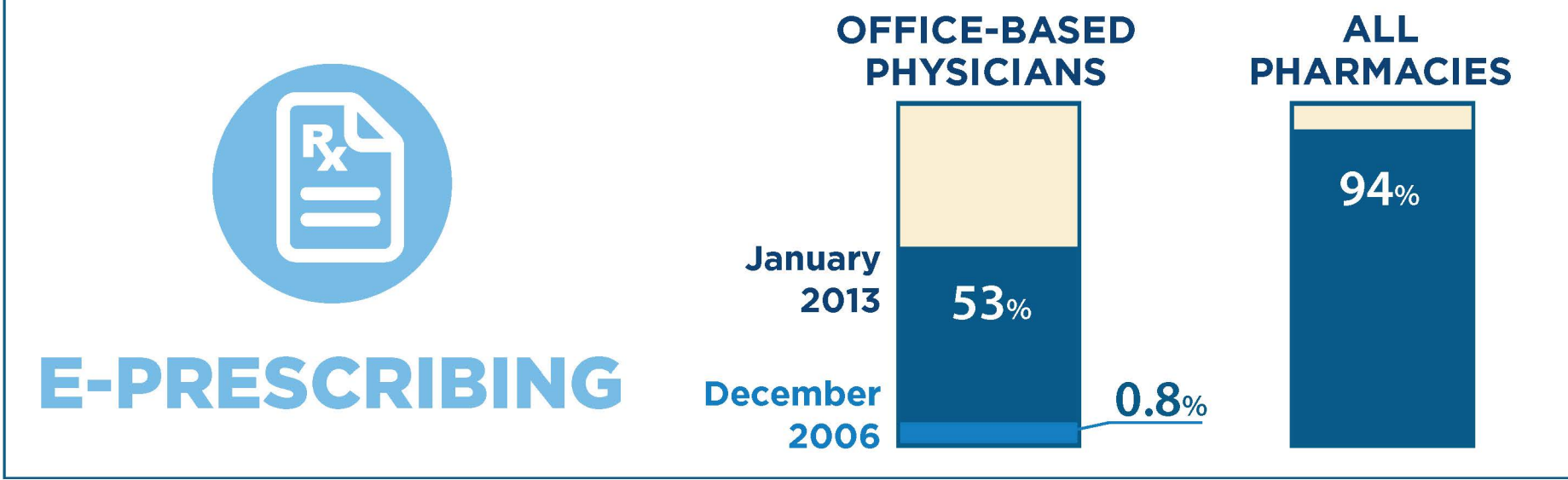
#### EFFECT ON THE HEALTH IT MARKETPLACE:

Federal investment and standard setting have helped to create a robust market for Health IT products.

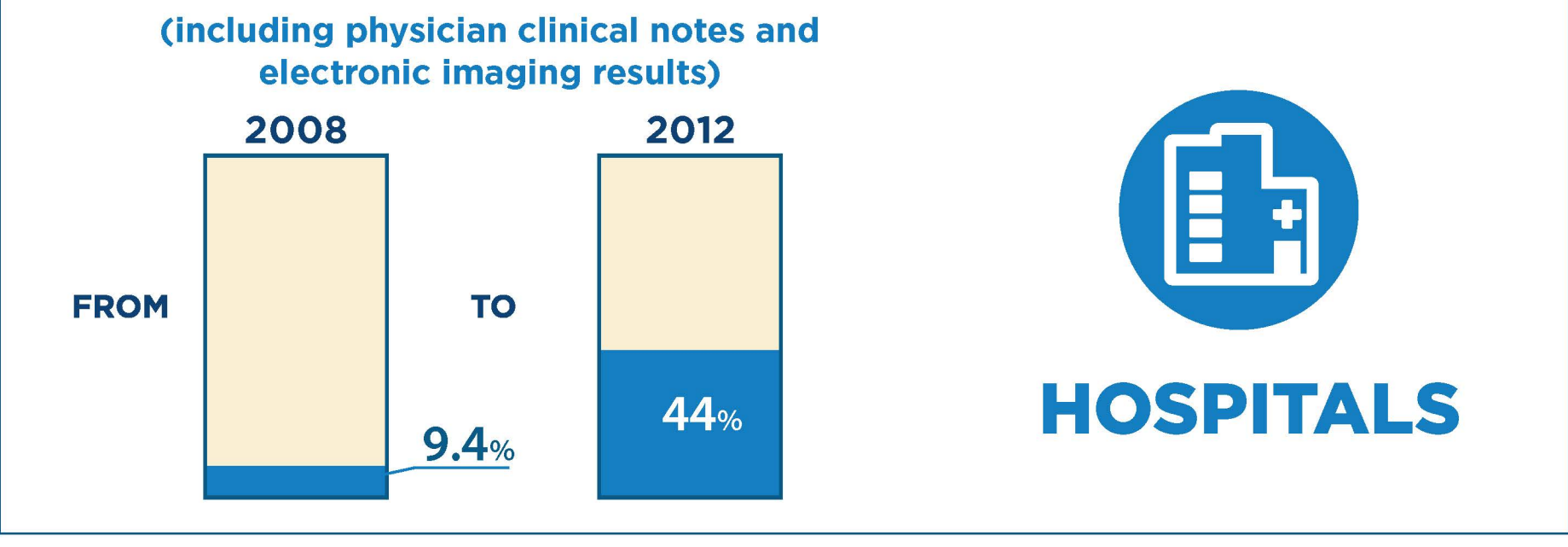


### RAPID ADOPTION OF ADVANCED TECHNOLOGY:

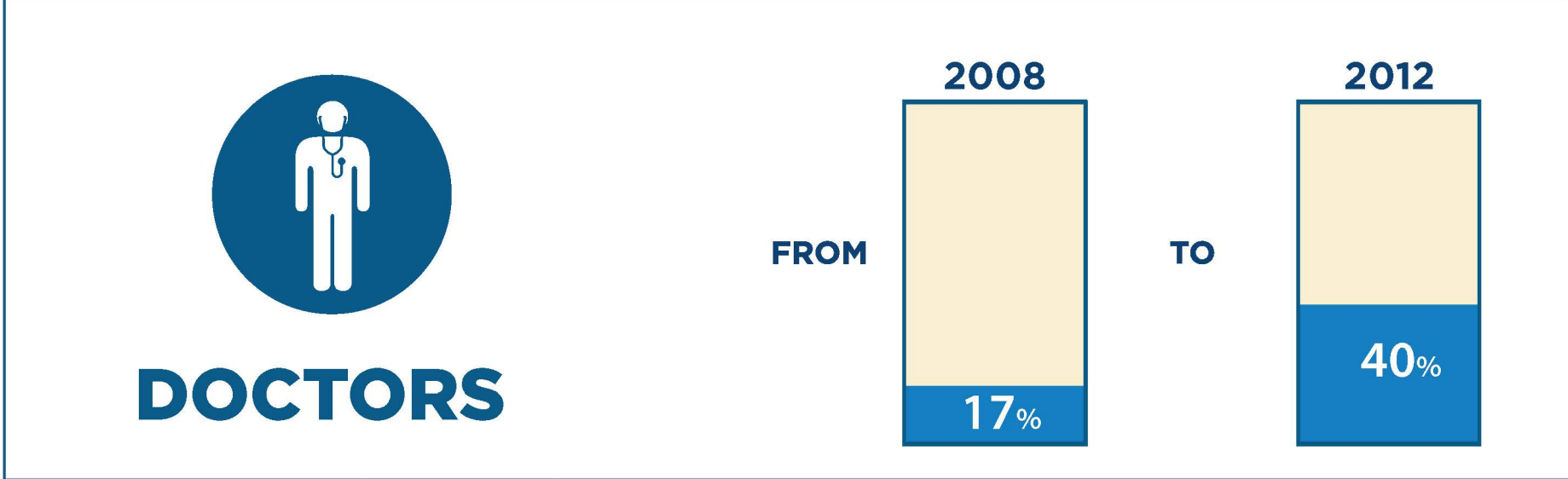
#### ACTIVELY E-PRESCRIBING



#### USING EHR SYSTEMS WITH CERTAIN ADVANCED FUNCTIONALITIES BEYOND the requirements of Meaningful Use Stage 1



#### ADOPTION OF EHR SYSTEMS with the same advanced functionalities



### ECONOMIC IMPACT:

**more than 50,000** HEALTH IT-RELATED JOBS have been created between 2008 and 2011 (HITECH was enacted in 2009) ~ Bureau of Labor Statistics

AS OF MARCH 2013	AS OF JANUARY 2013
Community Colleges have <b>TRAINED 17,523</b> PROFESSIONALS IN HEALTH IT	Universities had <b>GRADUATED 976</b> POST-GRADUATE AND MASTERS-LEVEL HEALTH IT PROFESSIONALS
<p>This is the result of four ONC-supported workforce development programs that are helping to train the new health IT workforce to meet the increased demand for these workers.</p>	